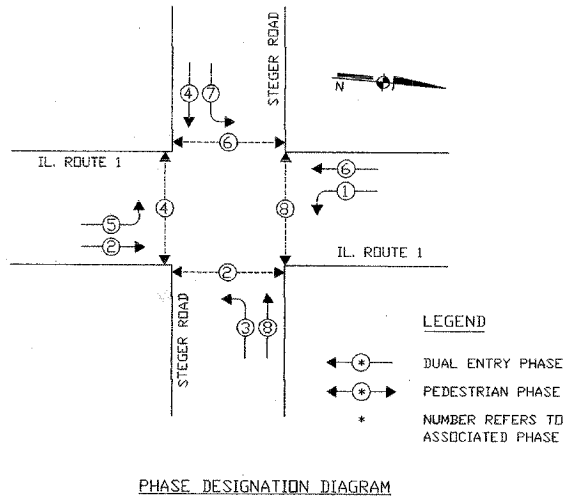
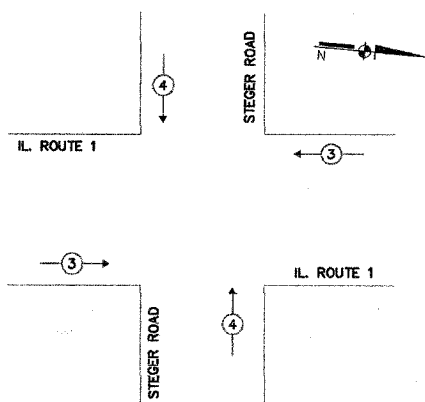


F.A. RTE.	SECTION	COUNTY	TOTAL SHEETS	SHEET NO.
	08-000146-00-TL		273	295
STA.	TO STA.			
FED. ROAD DIST. NO.	ILLINOIS	FED. AID PROJECT		

EXISTING CONTROLLER SEQUENCE



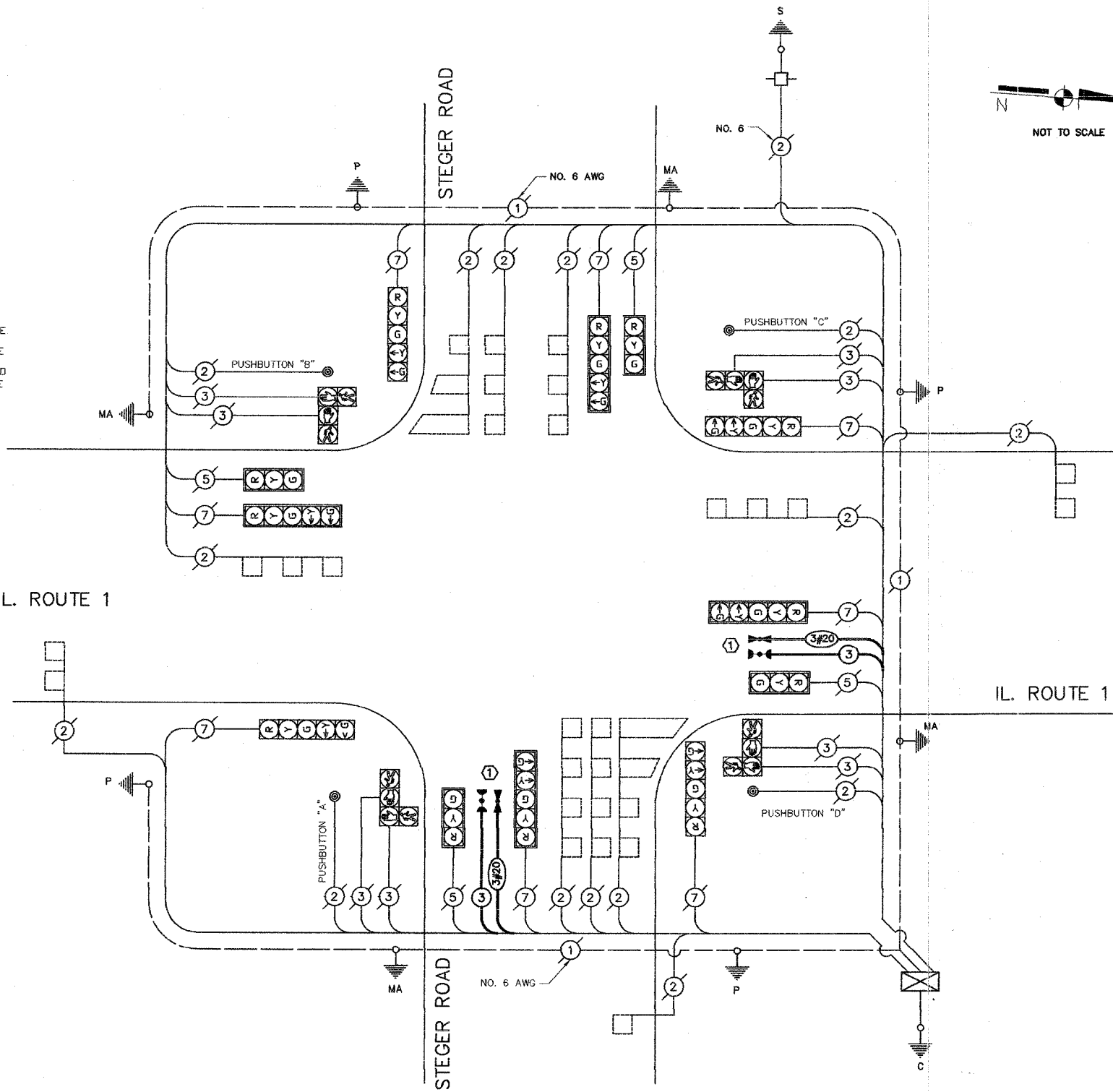
EMERGENCY VEHICLE PREEMPTION SEQUENCE



PROPOSED EMERGENCY VEHICLE PREEMPTORS		
EMERGENCY VEHICLE PREEMPTORS	3	4
MOVEMENT	←→	↑↓

IL. ROUTE 1

STEGER ROAD

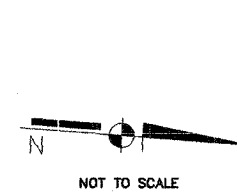


**PUSHBUTTON NOTES:**  
 PUSHBUTTON "A" SHALL PLACE A CALL TO PHASES 2 AND 4.  
 PUSHBUTTON "B" SHALL PLACE A CALL TO PHASES 4 AND 6.  
 PUSHBUTTON "C" SHALL PLACE A CALL TO PHASES 6 AND 8.  
 PUSHBUTTON "D" SHALL PLACE A CALL TO PHASES 2 AND 8.

CABLE PLAN

**NOTES:**  
 ① THIS PLAN IS FOR THE PURPOSE OF INSTALLING EMERGENCY VEHICLE PREEMPTION EQUIPMENT AS SHOWN PER PLAN INDICATED IN THE SCHEDULE OF QUANTITIES. ALL OTHER EQUIPMENT SHOWN SHALL BE DISREGARDED.

MODIFIED BY JOSEPH SCHUDT and ASSOCIATES



CABLE PLAN LEGEND

- |  |  |  |  |  |  |  |  |  |  |  |  |  |  |
|--|--|--|--|--|--|--|--|--|--|--|--|--|--|
|  |  |  |  |  |  |  |  |  |  |  |  |  |  |
|  |  |  |  |  |  |  |  |  |  |  |  |  |  |

SCHEDULE OF QUANTITIES

SCHEDULE OF QUANTITIES	Unit	Quantity
Maintenance of Existing Traffic Signal Installation	Each	1
Electric Cable in Conduit, Signal No. 14, 3c	Meter	81.2
Light Detector	Each	4
Light Detector Amplifier	Each	1
Electric Cable in Conduit, No. 20 3c Twisted Shielded	Meter	81.2
Traffic Control and Protection Standard 701701	Each	1

VILLAGE OF STEGER  
 LOCATION NO 123

REVISIONS		ILLINOIS DEPARTMENT OF TRANSPORTATION EMERGENCY VEHICLE PREEMPTION CABLE PLAN CONTROLLER SEQUENCE SCHEDULE OF QUANTITIES IL. ROUTE 1 AND STEGER ROAD
NAME	DATE	
		SCALE: N.T.S. DRAWN BY: MJD DATE: 1/02/08 CHECKED BY: MJD