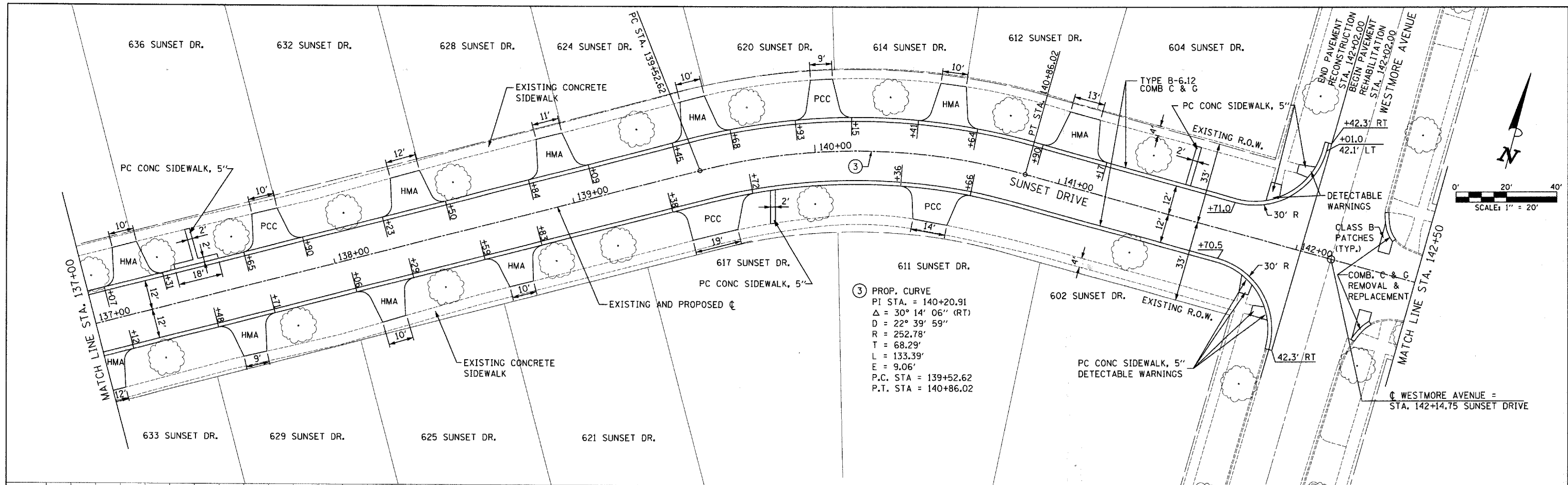
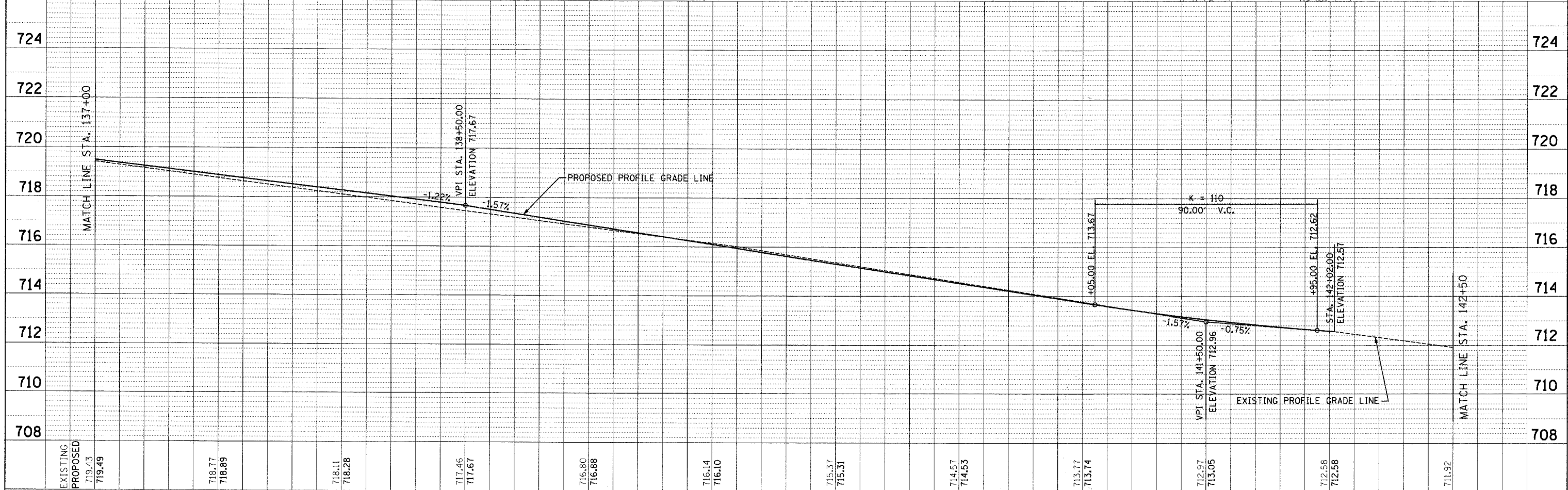
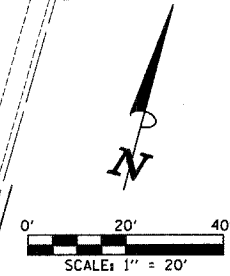


DATE	BY
REVISION	
APPROVED	
ALIGNED	
CHECKED	
NO. OF	
NO.	

DATE	BY
REVISION	
APPROVED	
GRADES CHECKED	
PLOTTED	
NO.	
NO.	



③ PROP. CURVE  
 PI STA. = 140+20.91  
 $\Delta = 30^\circ 14' 06''$  (RT)  
 $D = 22^\circ 39' 59''$   
 $R = 252.78'$   
 $T = 68.29'$   
 $L = 133.39'$   
 $E = 9.06'$   
 P.C. STA = 139+52.62  
 P.T. STA = 140+86.02



FILE NAME =	USER NAME = suser	DESIGNED -	REVISED -	P.A.U. R.T.E.	SECTION	COUNTY	TOTAL SHEETS	SHEET NO.
p:\v04090 - sunset phase 1\plans\sheet3\4090psp10103.dgn		DRAWN -	REVISED -	2426	06-00082-00-PV	DUPAGE	63	16
PLT SCALE = 20.0000' / IN.		CHECKED -	REVISED -	CONTRACT NO. 63015				
PLT DATE = 3/28/2008		DATE -	REVISED -	FED. ROAD DIST. NO. ILLINOIS FED. AID PROJECT				

STATE OF ILLINOIS  
 DEPARTMENT OF TRANSPORTATION

SUNSET DRIVE PLAN & PROFILE

SCALE: 1" = 20' SHEET NO. 3 OF 6 SHEETS STA. 137+00 TO STA. 142+50