

F.A.U. RTE.	SECTION	COUNTY	TOTAL SHEETS	SHEET NO.
2960	07-00063-00-TL	COOK	13	1
FED. ROAD DIST. NO. 1		ILLINOIS	FED. AID PROJECT	

STATE OF ILLINOIS  
DEPARTMENT OF TRANSPORTATION  
DIVISION OF HIGHWAYS  
**PLANS FOR PROPOSED  
TRAFFIC SIGNAL INTERCONNECT**

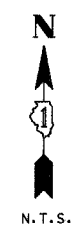
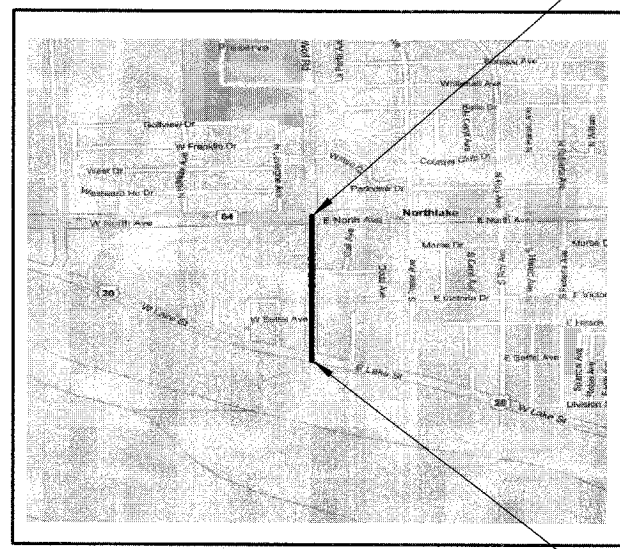
DISTRICT 1

**CONGESTION MITIGATION AIR QUALITY  
F.A.U. 2960 WOLF ROAD  
FROM LAKE STREET TO LEMOYNE AVENUE  
FEDERAL PROJECT NO.: CMM-8003(783)  
JOB NO: C-91-163-07  
SECTION 07-00063-00-TL  
CITY OF NORTHLAKE  
COOK COUNTY**



LOCATION OF SECTION INDICATED THIS: - [black rectangle] -

PROJECT ENDS  
WOLF ROAD AND LEMOYNE AVENUE



PROJECT BEGINS  
WOLF ROAD AND LAKE STREET

LOCATION MAP

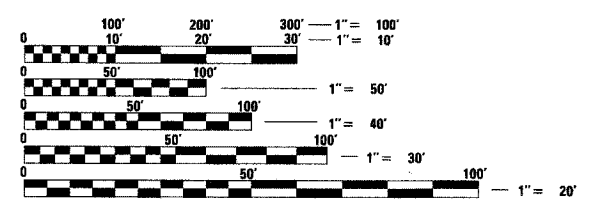
LENGTH OF IMPROVEMENTS =  
0.25 MILES

**INDEX OF SHEETS**

SHEET NO.	DESCRIPTION
1	TITLE SHEET
2	SUMMARY OF QUANTITIES
3	WOLF ROAD AND SOFFEL AVENUE REMOVAL PLAN
4	WOLF ROAD AND SOFFEL AVENUE ROADWAY AND STRIPING PLAN
5	WOLF ROAD AND SOFFEL AVENUE TRAFFIC SIGNAL INSTALLATION PLAN
6	WOLF ROAD AND SOFFEL AVENUE SCHEDULE OF QUANTITIES, CABLE PLAN AND PHASE DESIGNATION DIAGRAM
7	INTERCONNECT PLAN
8	INTERCONNECT SCHEMATIC
9	STREET NAME SIGNS
10-13	DISTRICT 1 STANDARD TRAFFIC SIGNAL DESIGN DETAILS

**LIST OF STATE STANDARDS**

STANDARD NO.	DESCRIPTION
STD. 000001-05	STANDARD SYMBOLS, ABBREVIATIONS AND PATTERNS
STD. 606001-03	CONCRETE CURB TYPE B AND COMBINATION CONCRETE CURB AND GUTTER
STD. 606306-02	CORRUGATED PC CONCRETE MEDIANS
STD. 701011-01	OFF ROAD MOVING OPERATIONS, 2L, 2W, DAY ONLY
STD. 701101-01	OFF ROAD OPERATIONS, MULTILANE, 15' TO 24" FROM PAVEMENT EDGE
STD. 701106-01	OFF ROAD OPERATIONS, MULTILANE, MORE THAN 15' AWAY
STD. 701301-02	LANE CLOSURE, 2L, 2W, SHORT TIME OPERATIONS
STD. 701701-05	URBAN LANE CLOSURE, MULTI-LANE INTERSECTION
STD. 701801-03	LANE CLOSURE, MULTI-LANE, 1W OR 2W CROSSWALK OR SIDEWALK CLOSURE
STD. 701901	TRAFFIC CONTROL DEVICES
STD. 720001	SIGN PANEL MOUNTING DETAILS
STD. 780001-01	TYPICAL PAVEMENT MARKINGS
STD. 814001-01	CONCRETE HANDHOLES
STD. 814006-01	DOUBLE HANDHOLES
STD. 857001	STANDARD PHASE DESIGNATION DIAGRAMS AND PHASE SEQUENCES
STD. 877001-03	STEEL MAST ARM ASSEMBLY AND POLE 16' THROUGH 55'
STD. 878001-06	CONCRETE FOUNDATION DETAILS
STD. 880006	TRAFFIC SIGNAL MOUNTING DETAILS
STD. 886001	DETECTOR LOOP INSTALLATIONS



FULL SIZE PLANS HAVE BEEN PREPARED USING STANDARD ENGINEERING SCALES. REDUCED SIZED PLANS WILL NOT CONFORM TO STANDARD SCALES. IN MAKING MEASUREMENTS ON REDUCED PLANS, THE ABOVE SCALES MAY BE USED.

J.U.L.I.E.  
JOINT UTILITY LOCATION INFORMATION FOR EXCAVATION  
1-800-892-0123

**CONTRACT NO. 63026**

**CHRISTOPHER B. BURKE** ENGINEERING LTD.  
 9575 West Higgins Road, Suite 600  
 Rosemont, Illinois 60018 (847) 823-0500

**FEDERAL AID DESIGN ENGINEER: PHIL MARCYN**  
 (847) 705-4189

**ILLINOIS DEPARTMENT OF TRANSPORTATION**

APPROVED April 2 2008  
  
 LOCAL AGENCY POSITION

PASSED APRIL 9 2008  
  
 CHRISTOPHER HOLT  
 DISTRICT ONE ENGINEER OF LOCAL ROADS & STREETS

RELEASING FOR BID  
 BASED ON LIMITED REVIEW  
APRIL 9 2008  
  
 DEPUTY DIRECTOR OF HIGHWAYS, REGION ONE ENGINEER

**PRINTED BY THE AUTHORITY  
OF THE STATE OF ILLINOIS**

GEORGE M. ZIEGLER  
 ILLINOIS REGISTRATION No. 062-45853  
 EXPIRATION DATE: 11-30-2009  
 PROFESSIONAL DESIGN FIRM No.: 184-001742  
 EXPIRATION DATE: 04-30-2009