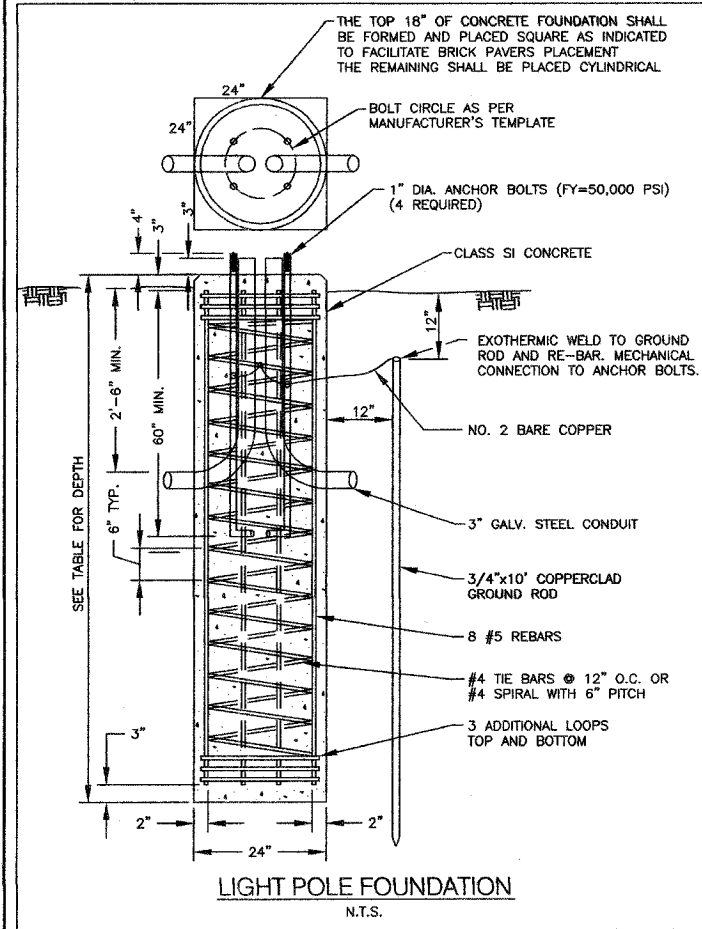
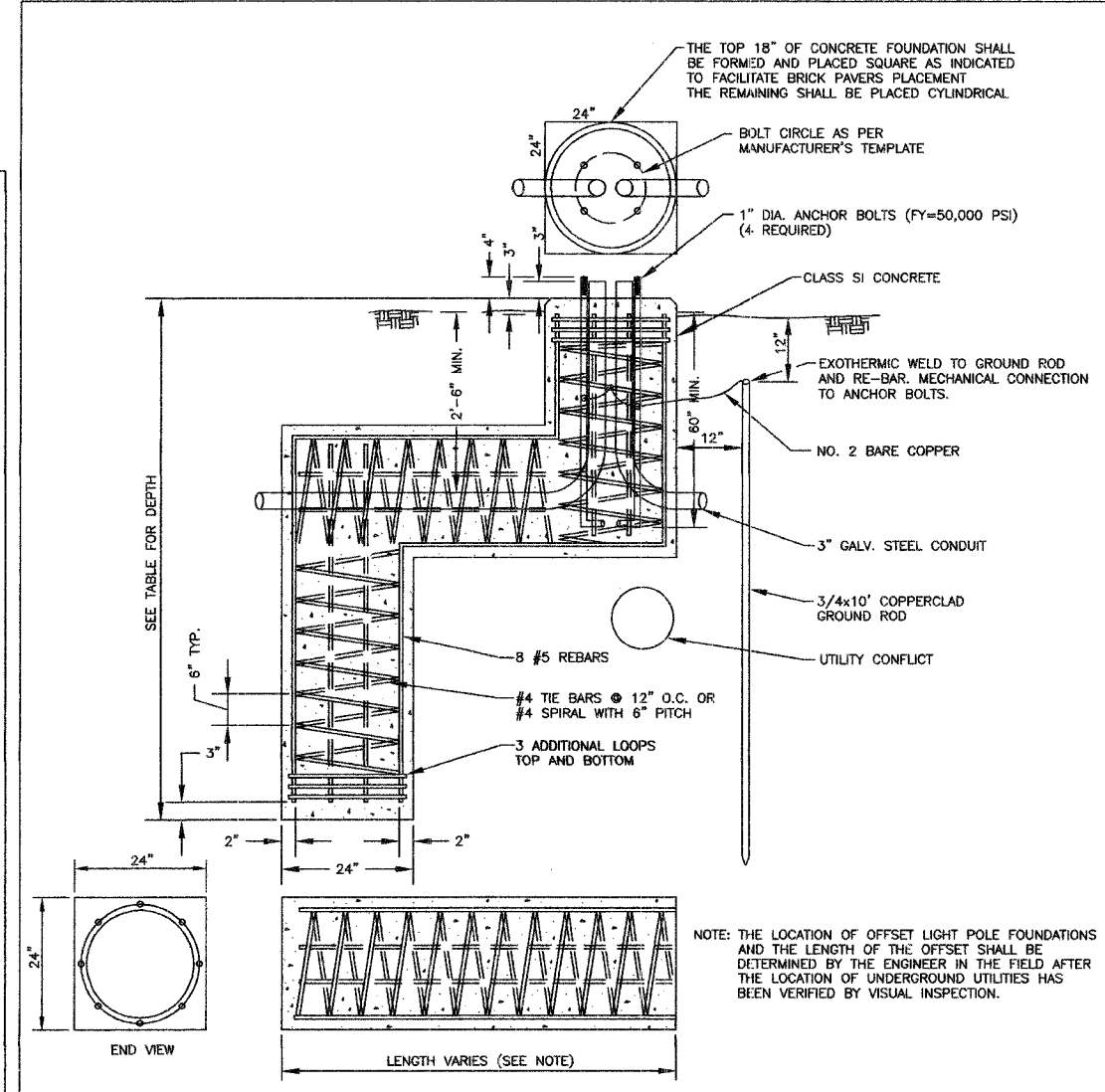


- NOTES:
1. CONCRETE SHALL BE CLASS SI WITH A MINIMUM COMPRESSIVE STRENGTH OF 3500 PSI.
  2. REINFORCING BARS SHALL BE NEW BILLET STEEL (ASTM A615), FY=60,000 PSI, DEFORMED PER ASTM A307.
  3. THE HOLE FOR THE FOUNDATION SHALL BE AUGERED.
  4. THE TOP 10" OF THE ANCHOR BOLTS SHALL BE GALVANIZED. EACH ANCHOR BOLT SHALL BE SUPPLIED WITH TWO FLAT GALVANIZED STEEL WASHERS.

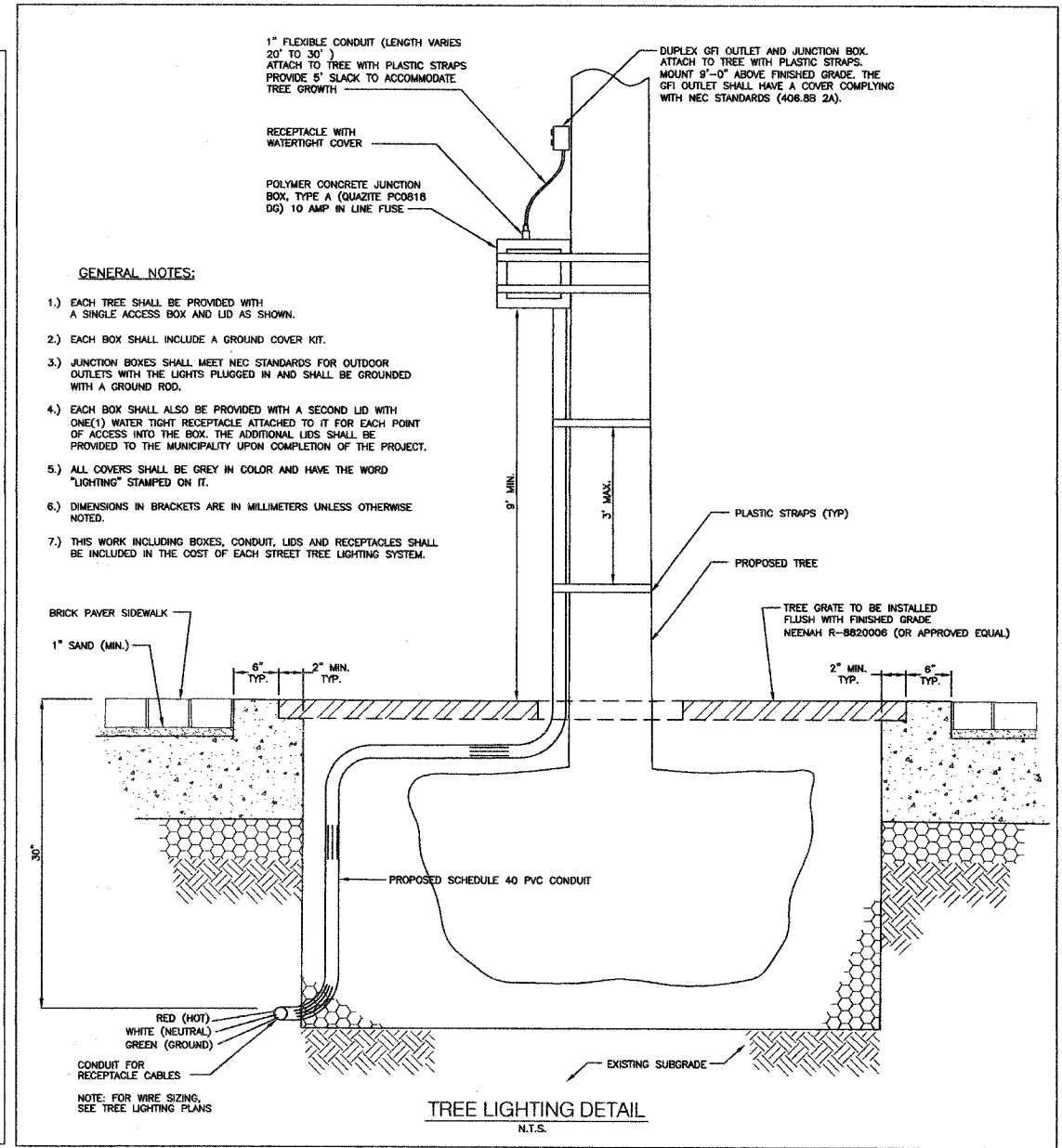
FOUNDATION SCHEDULE		
DESCRIPTION	TYPE OF SOILS	EMBEDMENT
SOFT CLAY	Qu = 0.25 to 0.50 tons/sq ft	9' - 8"
MEDIUM CLAY	Qu = 0.50 to 1.00 tons/sq ft	7' - 0"
DENSE CLAY	Qu = 1.00 to 2.00 tons/sq ft	6' - 0"
LOOSE SAND	N = 4 TO 10	7' - 8"
MEDIUM SAND	N = 10 TO 30	6' - 6"
DENSE SAND	N = 30 TO 50	6' - 0"



**LIGHT POLE FOUNDATION**  
N.T.S.



**OFFSET LIGHT POLE FOUNDATION**  
N.T.S.



**TREE LIGHTING DETAIL**  
N.T.S.

- GENERAL NOTES:
1. EACH TREE SHALL BE PROVIDED WITH A SINGLE ACCESS BOX AND LID AS SHOWN.
  2. EACH BOX SHALL INCLUDE A GROUND COVER KIT.
  3. JUNCTION BOXES SHALL MEET NEC STANDARDS FOR OUTDOOR OUTLETS WITH THE LIGHTS PLUGGED IN AND SHALL BE GROUNDED WITH A GROUND ROD.
  4. EACH BOX SHALL ALSO BE PROVIDED WITH A SECOND LID WITH ONE (1) WATER TIGHT RECEPTACLE ATTACHED TO IT FOR EACH POINT OF ACCESS INTO THE BOX. THE ADDITIONAL LIDS SHALL BE PROVIDED TO THE MUNICIPALITY UPON COMPLETION OF THE PROJECT.
  5. ALL COVERS SHALL BE GREY IN COLOR AND HAVE THE WORD "LIGHTING" STAMPED ON IT.
  6. DIMENSIONS IN BRACKETS ARE IN MILLIMETERS UNLESS OTHERWISE NOTED.
  7. THIS WORK INCLUDING BOXES, CONDUIT, LIDS AND RECEPTABLES SHALL BE INCLUDED IN THE COST OF EACH STREET TREE LIGHTING SYSTEM.

LOAD TABLE FOR LIGHTING CONTROLLER "A"					
PHASE A			PHASE B		
CIRCUIT	DESCRIPTION	AMPS	CIRCUIT	DESCRIPTION	AMPS
A	LIGHTS	12.4	B	LIGHTS	9.6
C	GFI OUTLETS	15	D	GFI OUTLETS	12
E	GFI OUTLETS	12	F	GFI OUTLETS	12
G	TREE LIGHTS	16	H	TREE LIGHTS	12
I	TREE LIGHTS	12	J	TREE LIGHTS	12
K	LIGHTS	3.2	L	GFI OUTLETS	6
TOTAL AMPS		70.6	TOTAL AMPS		63.6

LOAD TABLE FOR LIGHTING CONTROLLER "B"					
PHASE A			PHASE B		
CIRCUIT	DESCRIPTION	AMPS	CIRCUIT	DESCRIPTION	AMPS
A	LIGHTS	11.6	B	LIGHTS	12.8
C	GFI OUTLETS	15	D	GFI OUTLETS	12
E	GFI OUTLETS	15	F	GFI OUTLETS	12
G			H		
I			J		
K			L		
TOTAL AMPS		41.6	TOTAL AMPS		36.8

REVISIONS	
NAME	DATE
IDOT COMMENTS	3/27/07

ILLINOIS DEPARTMENT OF TRANSPORTATION  
F.A.U.  
YORK ROAD

LIGHTING DETAILS

SCALE: NTS  
DATE: 12/22/07

DRAWN BY: BCD  
CHECKED BY: JDM