

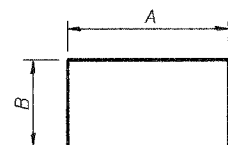
STATE OF ILLINOIS
DEPARTMENT OF TRANSPORTATION

ROUTE NO.	SECTION	COUNTY	STATION	SHEET NO.
FAP 301	3HBR-2	WINNEBAGO	171	115
FED. ROAD DIST. NO. 7	ILLINOIS	FED. AID PROJECT-		

SHEET NO. 29

34 SHEETS

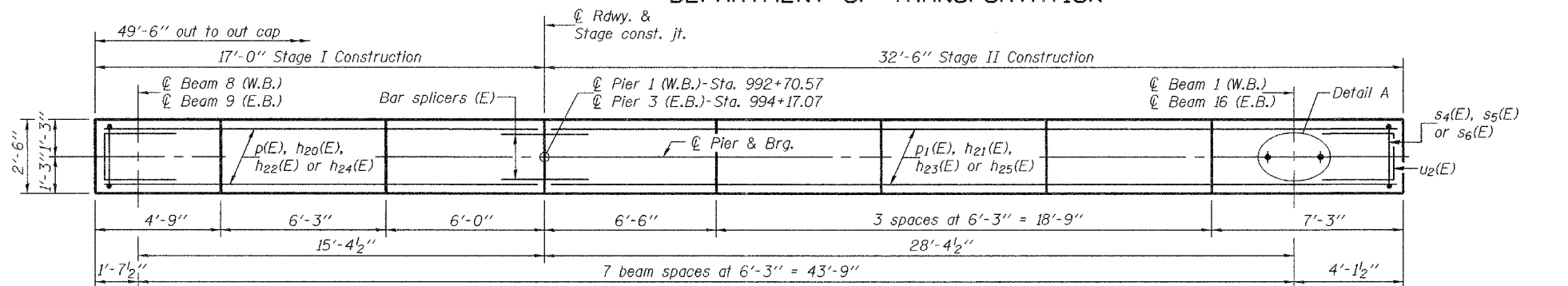
Contract No. 64292



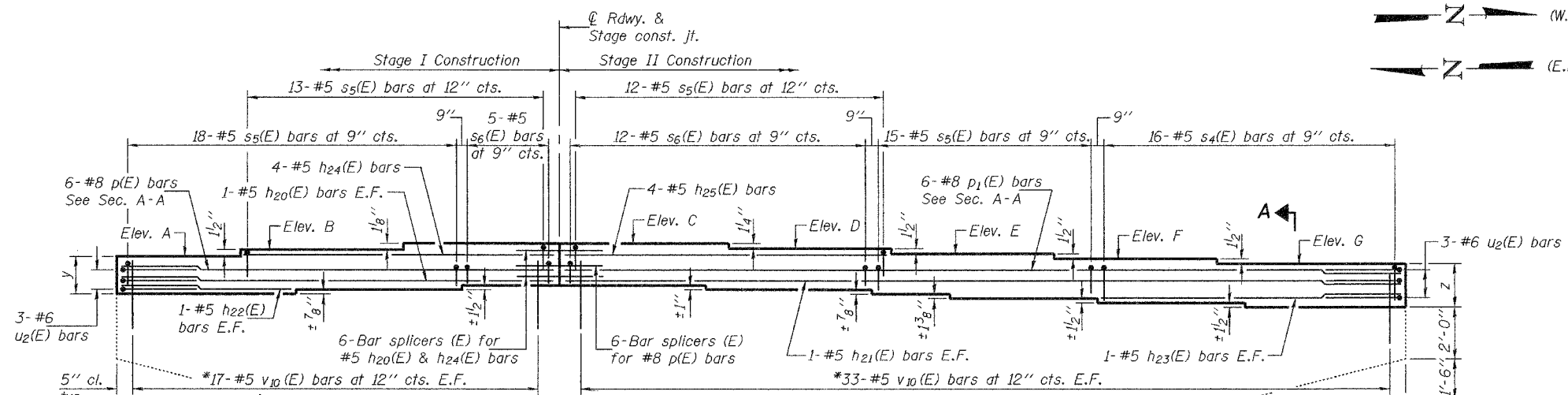
BARS $s_4(E)$,
 $s_5(E)$ & $s_6(E)$

A & B DIMENSIONS

Bar	A	B
$s_4(E)$	2'-2"	1'-0"
$s_5(E)$	2'-2"	10"
$s_6(E)$	2'-2"	8"

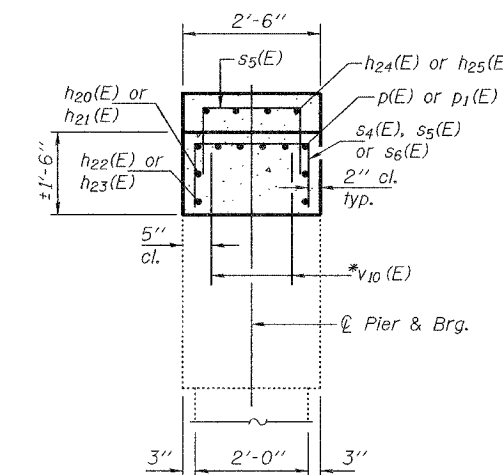


TOP PLAN



ELEVATION

(Pier 1 (W.B.) - Looking West)
(Pier 3 (E.B.) - Looking East)



SECTION A-A

TWO PIERS
BILL OF MATERIAL

Bar	No.	Size	Length	Shape
$h_{20}(E)$	4	#5	16'-8"	—
$h_{21}(E)$	4	#5	32'-2"	—
$h_{22}(E)$	4	#5	6'-5"	—
$h_{23}(E)$	4	#5	11'-6"	—
$h_{24}(E)$	8	#5	11'-11"	—
$h_{25}(E)$	8	#5	12'-5"	—
$p(E)$	12	#8	16'-8"	—
$p_1(E)$	12	#8	32'-2"	—
$s_4(E)$	32	#5	4'-2"	□
$s_5(E)$	116	#5	3'-10"	□
$s_6(E)$	34	#5	3'-6"	□
$u_2(E)$	12	#6	6'-4"	—
* $v_{10}(E)$	100	#5	1'-10"	—
Concrete Structures		Cu. Yd.	14.1	
Reinforcement Bars, Epoxy Coated		Pound	3080	

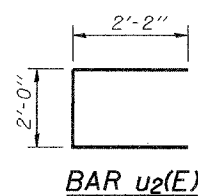
* Epoxy grout $v_{10}(E)$ bars in 9" min. drilled holes according to Section 584 of the Std. Spec's. Space drilled holes in existing cap to miss existing reinforcement. Cost included with Reinforcement Bars, Epoxy Coated.

END VIEW

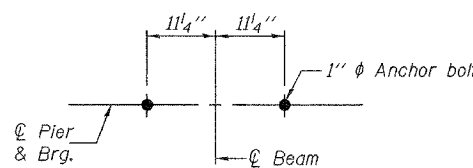
Notes: Space reinforcement in cap to miss anchor bolts.
Pour steps monolithically with cap.
For bar splicer details see sheet 33 of 34.

DESIGNED	Stephen M. Ryan
CHECKED	Fess Tektelhamanot
DRAWN	h.t. duong
CHECKED	SMR/FT

APPROVED
Apr. 26, 2008
EXAMINED *Thomas J. Damagala*
ENGINEER OF BRIDGE DESIGN
PASSED *Ralph E. Anderson*
ENGINEER OF BRIDGES AND STRUCTURES



BAR $u_2(E)$



DETAIL A

TABLE OF PIER CAP
END THICKNESS

Location	y	z
Pier 1 (W.B.)	1'-5 1/2"	1'-6"
Pier 3 (E.B.)	1'-6 1/8"	1'-7 1/4"

TABLE OF ELEVATIONS

Location	A	B	C	D	E	F	G
Pier 1 (W.B.)	749.27	749.39	749.48	749.38	749.26	749.13	749.00
Pier 3 (E.B.)	751.19	751.31	751.40	751.30	751.18	751.05	750.92

PIER 1 (W.B.)
PIER 3 (E.B.)
F.A.P. RTE. 301 - SEC. 3HBR-2
WINNEBAGO COUNTY
STATION 993+43.82
STRUCTURE NO. 101-0065 (E.B.)
STRUCTURE NO. 101-0066 (W.B.)