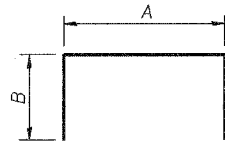


STATE OF ILLINOIS
DEPARTMENT OF TRANSPORTATION

| | | | | |
|-----------------------|----------|-------------------|------|-----------|
| ROUTE NO. | SECTION | COUNTY | STA. | SHEET NO. |
| FAP 301 | 3HBR-2 | WINNEBAGO | 171 | 116 |
| FED. ROAD DIST. NO. 7 | ILLINOIS | FED. AID PROJECT- | | |

SHEET NO. 30
34 SHEETS

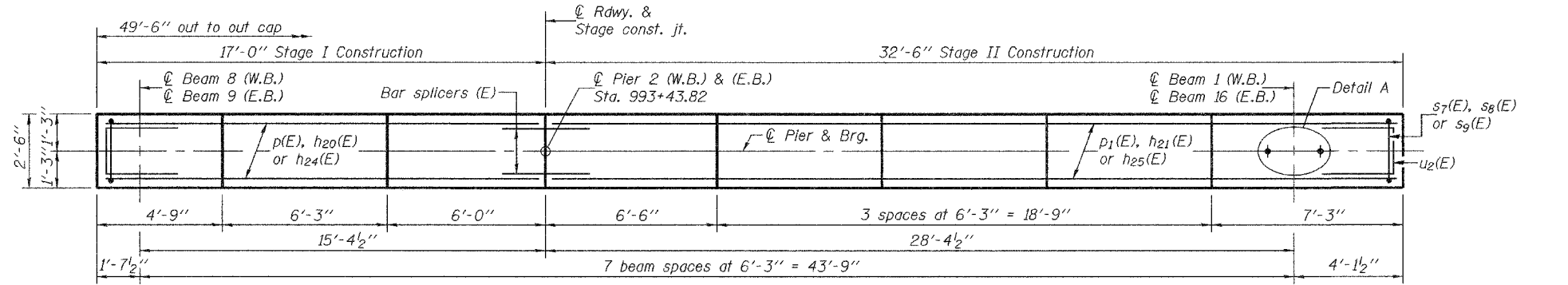
Contract No. 64292



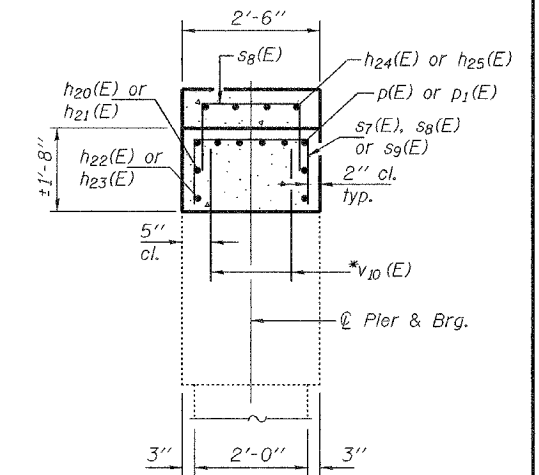
BARS $s_7(E)$,
 $s_8(E)$ & $s_9(E)$

A & B DIMENSIONS

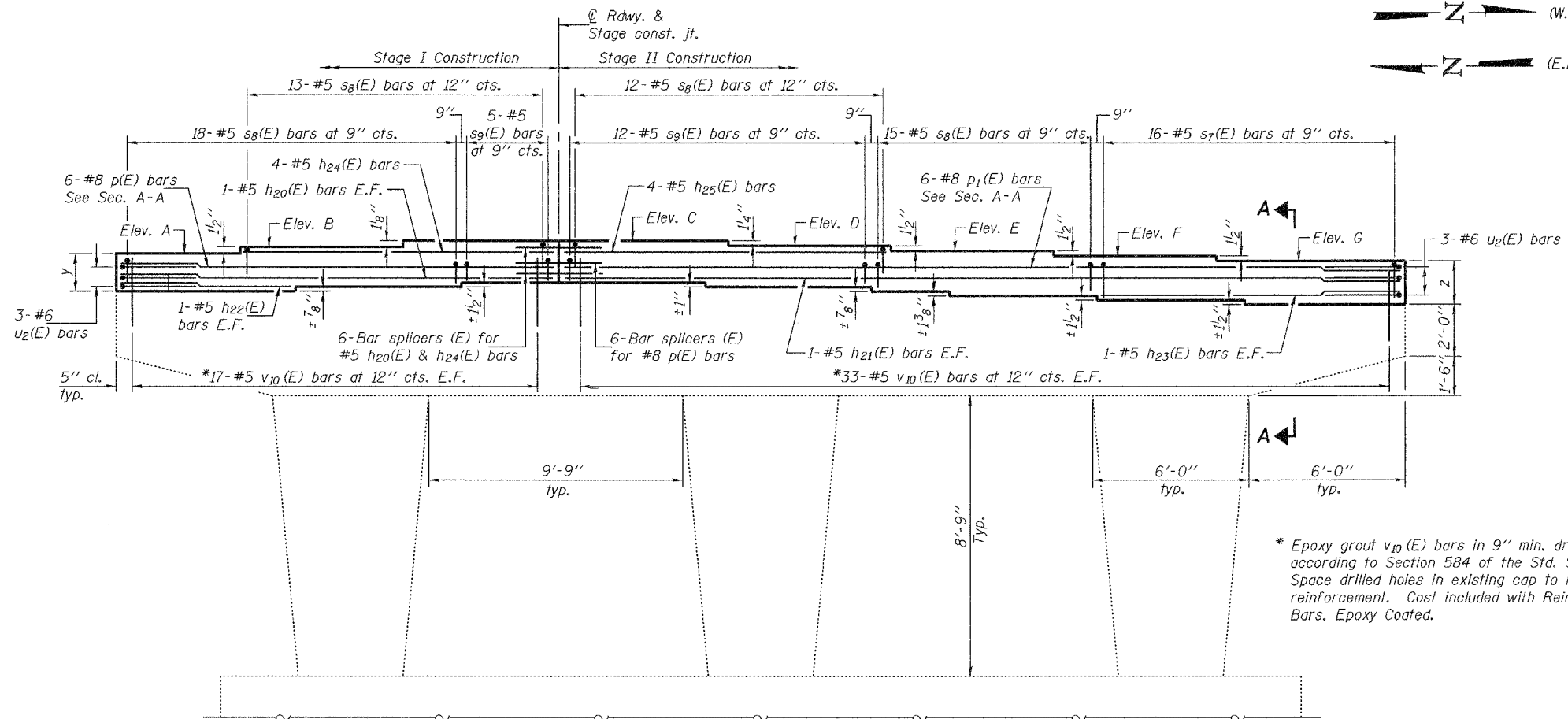
| Bar | A | B |
|----------|-------|-------|
| $s_7(E)$ | 2'-2" | 1'-1" |
| $s_8(E)$ | 2'-2" | 11" |
| $s_9(E)$ | 2'-2" | 9" |



TOP PLAN



SECTION A-A



ELEVATION

(Pier 2 (W.B.) - Looking West)
(Pier 2 (E.B.) - Looking East)

TWO PIERS
BILL OF MATERIAL

| Bar | No. | Size | Length | Shape |
|-------------------------------------|-----|---------|---------|-------|
| $h_{20}(E)$ | 4 | #5 | 16'-8" | — |
| $h_{21}(E)$ | 4 | #5 | 32'-2" | — |
| $h_{22}(E)$ | 4 | #5 | 6'-5" | — |
| $h_{23}(E)$ | 4 | #5 | 11'-6" | — |
| $h_{24}(E)$ | 8 | #5 | 11'-11" | — |
| $h_{25}(E)$ | 8 | #5 | 12'-5" | — |
| $p(E)$ | 12 | #8 | 16'-8" | — |
| $p_1(E)$ | 12 | #8 | 32'-2" | — |
| $s_7(E)$ | 32 | #5 | 4'-4" | □ |
| $s_8(E)$ | 116 | #5 | 4'-0" | □ |
| $s_9(E)$ | 34 | #5 | 3'-8" | □ |
| $u_2(E)$ | 12 | #6 | 6'-4" | — |
| $v_{10}(E)$ | 100 | #5 | 1'-10" | — |
| Concrete Structures | | Cu. Yd. | 15.2 | |
| Reinforcement Bars, Epoxy Coated | | Pound | 3110 | |

* Epoxy grout $v_{10}(E)$ bars in 9" min. drilled holes according to Section 584 of the Std. Spec's. Space drilled holes in existing cap to miss existing reinforcement. Cost included with Reinforcement Bars, Epoxy Coated.

END VIEW

Notes: Space reinforcement in cap to miss anchor bolts.
Pour steps monolithically with cap.
For bar splicer details see sheet 33 of 34.

| | |
|----------|--------------------|
| DESIGNED | Stephen M. Ryan |
| CHECKED | Fess Teklehaimanot |
| DRAWN | h.t. duong |
| CHECKED | SMR/FT |

| | | |
|----------|--------------------|---------------|
| EXAMINED | Thomas J. Damagala | Apr. 25, 2008 |
| PASSED | Ralph E. Anderson | |

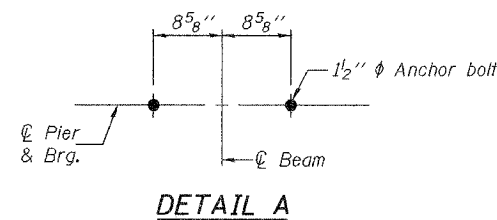
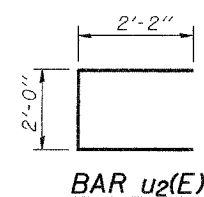


TABLE OF PIER CAP
END THICKNESS

| Location | y | z |
|---------------|-----------|-----------|
| Pier 2 (W.B.) | 1'-7 1/2" | 1'-8 1/8" |
| Pier 2 (E.B.) | 1'-7 3/4" | 1'-8 1/4" |

TABLE OF ELEVATIONS

| Location | A | B | C | D | E | F | G |
|---------------|--------|--------|--------|--------|--------|--------|--------|
| Pier 2 (W.B.) | 750.35 | 750.46 | 750.55 | 750.46 | 750.34 | 750.21 | 750.08 |
| Pier 2 (E.B.) | 750.35 | 750.46 | 750.55 | 750.46 | 750.34 | 750.21 | 750.08 |

PIER 2 (W.B.) & (E.B.)
F.A.P. RTE. 301 - SEC. 3HBR-2
WINNEBAGO COUNTY
STATION 993+43.82
STRUCTURE NO. 101-0065 (E.B.)
STRUCTURE NO. 101-0066 (W.B.)