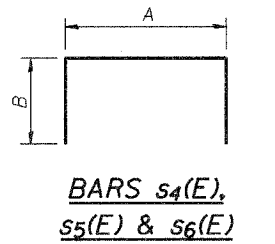


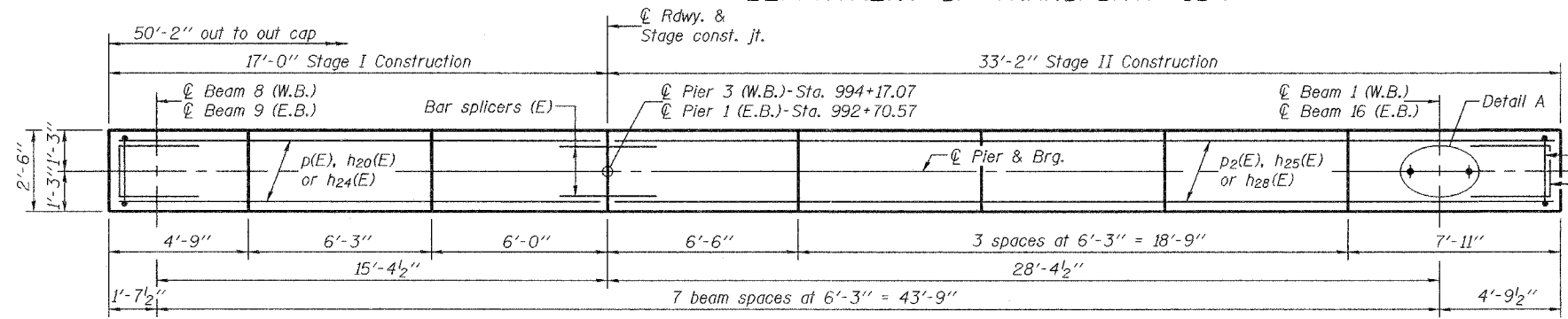
STATE OF ILLINOIS  
DEPARTMENT OF TRANSPORTATION

ROUTE NO.	SECTION	COUNTY	TOTAL SHEETS	SHEET	SHEET NO. 31
FAP 301	3HBR-2	WINNEBAGO	171	117	34 SHEETS
FED. ROAD DIST. NO. 7	ILLINOIS	FED. AID PROJECT	Contract No. 64292		

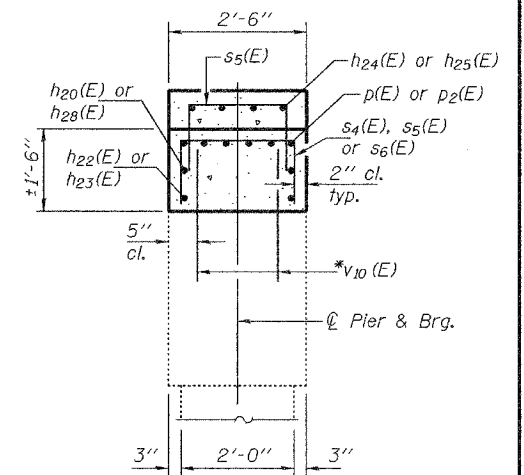


**BARS s<sub>4</sub>(E), s<sub>5</sub>(E) & s<sub>6</sub>(E)**

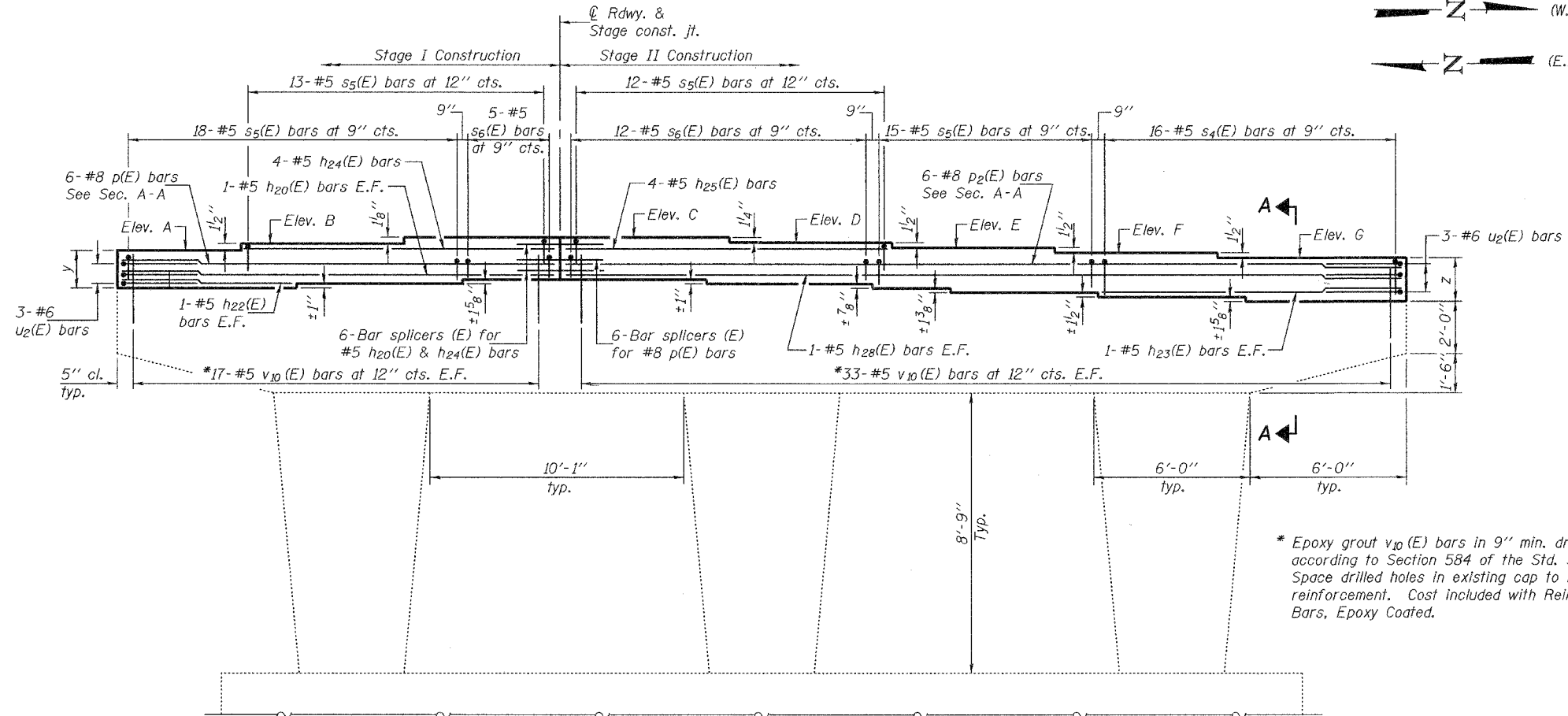
Bar	A	B
s <sub>4</sub> (E)	2'-2"	1'-0"
s <sub>5</sub> (E)	2'-2"	10"
s <sub>6</sub> (E)	2'-2"	8"



**TOP PLAN**



**SECTION A-A**



**ELEVATION**

(Pier 3 (W.B.) - Looking West)  
(Pier 1 (E.B.) - Looking East)

**TWO PIERS  
BILL OF MATERIAL**

Bar	No.	Size	Length	Shape
h <sub>20</sub> (E)	4	#5	16'-8"	—
h <sub>22</sub> (E)	4	#5	6'-5"	—
h <sub>23</sub> (E)	4	#5	11'-6"	—
h <sub>24</sub> (E)	8	#5	11'-11"	—
h <sub>25</sub> (E)	8	#5	12'-5"	—
h <sub>28</sub> (E)	4	#5	32'-10"	—
p(E)	12	#8	16'-8"	—
p <sub>2</sub> (E)	12	#8	32'-10"	—
s <sub>4</sub> (E)	34	#5	4'-2"	□
s <sub>5</sub> (E)	116	#5	3'-10"	□
s <sub>6</sub> (E)	34	#5	3'-6"	□
u <sub>2</sub> (E)	12	#6	6'-4"	□
*v <sub>10</sub> (E)	100	#5	1'-10"	—
Concrete Structures		Cu. Yd.	14.0	
Reinforcement Bars, Epoxy Coated		Pound	3110	

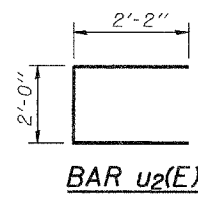
\* Epoxy grout v<sub>10</sub>(E) bars in 9" min. drilled holes according to Section 584 of the Std. Spec's. Space drilled holes in existing cap to miss existing reinforcement. Cost included with Reinforcement Bars, Epoxy Coated.

**END VIEW**

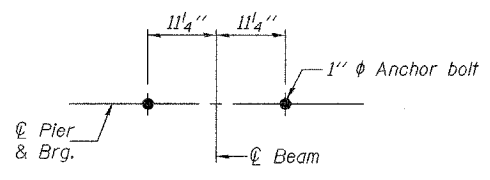
Notes: Space reinforcement in cap to miss anchor bolts. Four steps monolithically with cap. For bar splicer details see sheet 33 of 34.

DESIGNED	Stephen M. Ryan
CHECKED	Fess Teklehaimanot
DRAWN	h.t. duong
CHECKED	SMR/FT

APR 26, 2008  
EXAMINED *Thomas J. Damagala*  
PASSED *Ralph E. Anderson*  
ENGINEER OF BRIDGE DESIGN  
ENGINEER OF BRIDGES AND STRUCTURES



**BAR u<sub>2</sub>(E)**



**DETAIL A**

**TABLE OF PIER CAP  
END THICKNESS**

Location	y	z
Pier 3 (W.B.)	1'-6"	1'-6 <sup>7</sup> / <sub>8</sub> "
Pier 1 (E.B.)	1'-5 <sup>1</sup> / <sub>8</sub> "	1'-6 <sup>3</sup> / <sub>8</sub> "

**TABLE OF ELEVATIONS**

Location	A	B	C	D	E	F	G
Pier 3 (W.B.)	751.16	751.28	751.37	751.27	751.15	751.02	750.89
Pier 1 (E.B.)	749.24	749.36	749.45	749.35	749.23	749.10	748.97

**PIER 3 (W.B.)  
PIER 1 (E.B.)**  
F.A.P. RTE. 301 - SEC. 3HBR-2  
WINNEBAGO COUNTY  
STATION 993+43.82  
STRUCTURE NO. 101-0065 (E.B.)  
STRUCTURE NO. 101-0066 (W.B.)