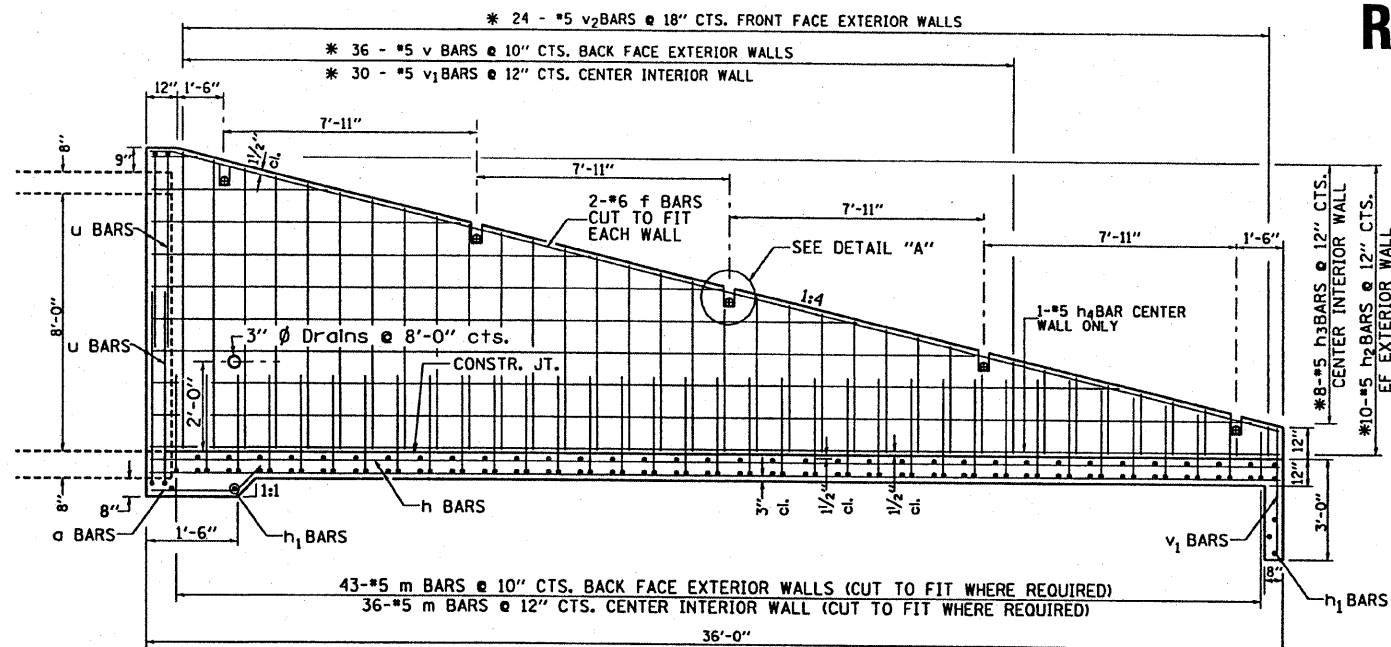


8'x8' Double Box Culvert End Section

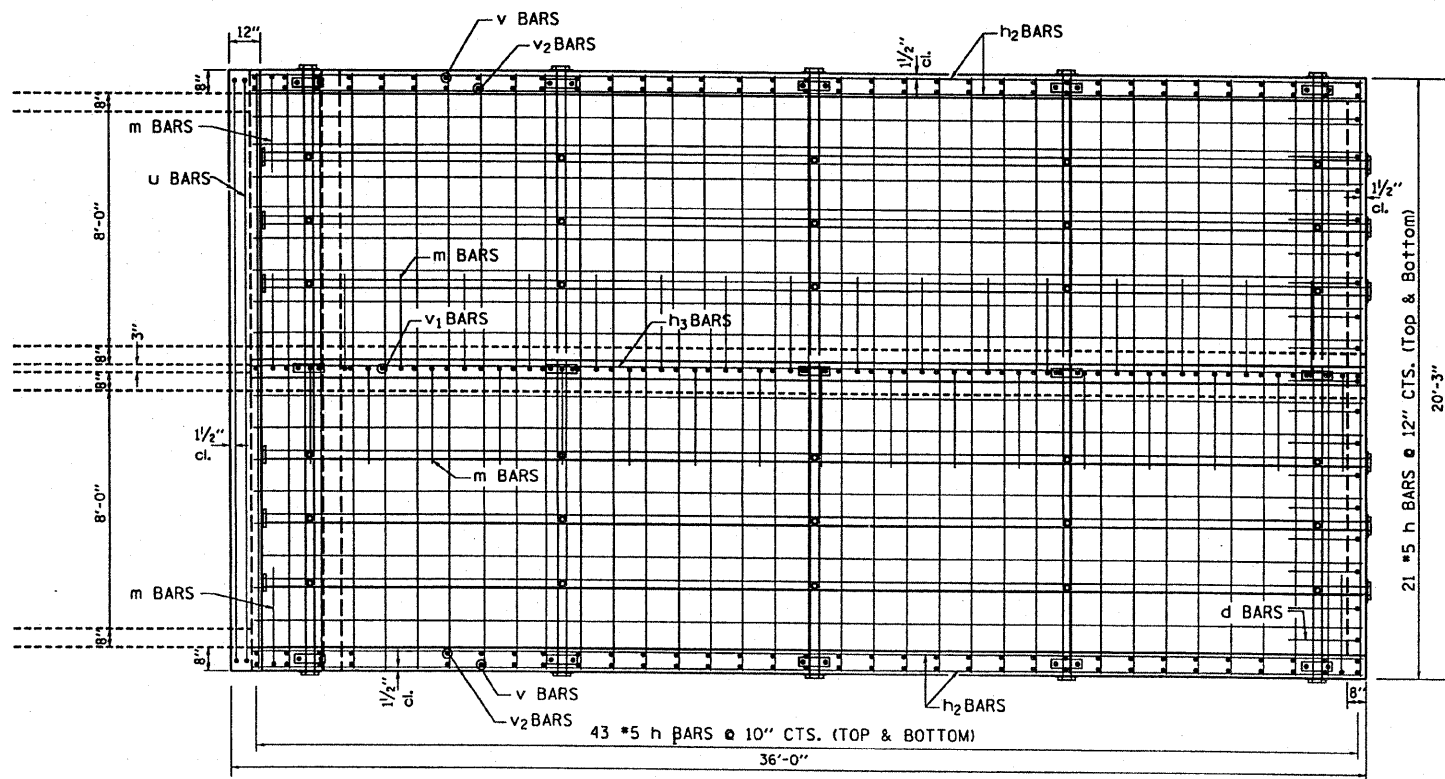
RT 1211 + 65

CONTRACT NO. 64C35				
F.A.P. RTE.	SECTION	COUNTY	TOTAL SHEETS	SHEET NO.
17	15T-2	CARROLL	71	36
STA.		TO STA.		
FED. ROAD DIST. NO.		ILLINOIS		FED. AID PROJECT
SHEET 1 OF 2				

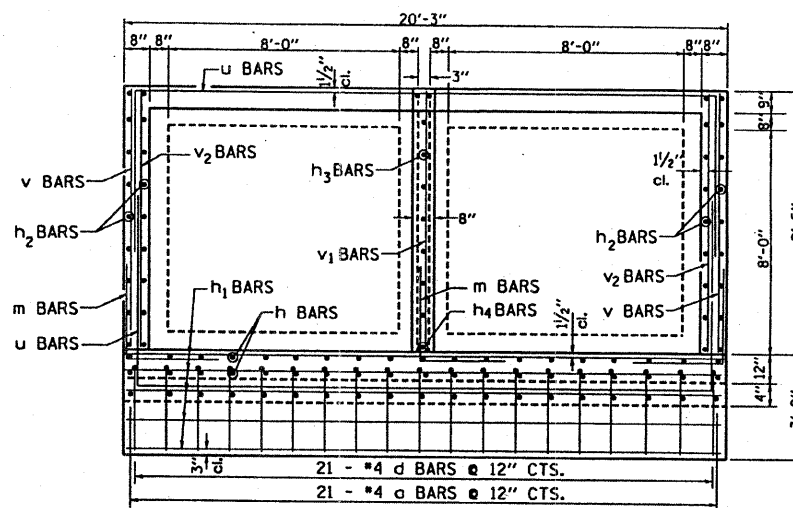


PROFILE VIEW

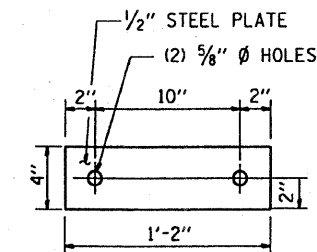
* bars shall be ordered full length & cut to fit. Balance of bar to be used in opposite side of end section.



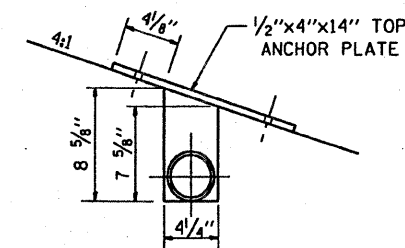
PLAN VIEW



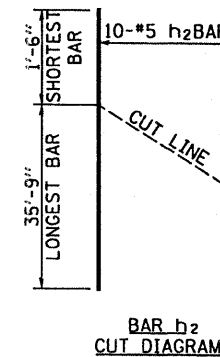
HEADWALL



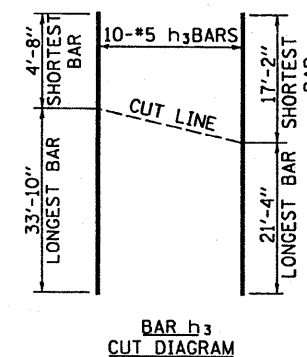
TOP ANCHOR PLATE



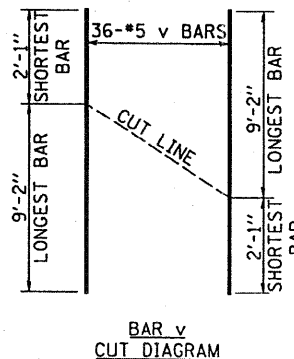
DETAIL "A"



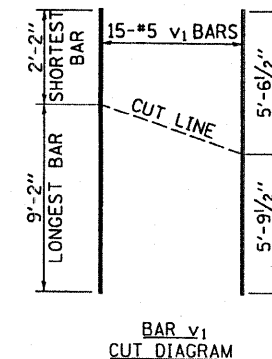
BAR h2 CUT DIAGRAM



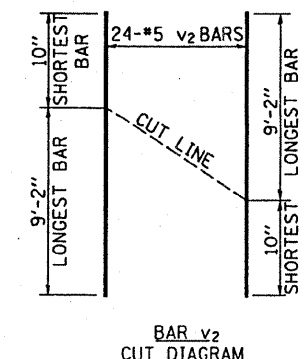
BAR h3 CUT DIAGRAM



BAR v CUT DIAGRAM



BAR v1 CUT DIAGRAM



BAR v2 CUT DIAGRAM

James O. Hamilton
 1/23/2008
 Expires: 11/30/2008

PLOT DATE: 1/23/2008
 FILE NAME: V:\31100\10-Top Box & End Section - to 100T.dgn
 USER: NAME: J. Hamilton