

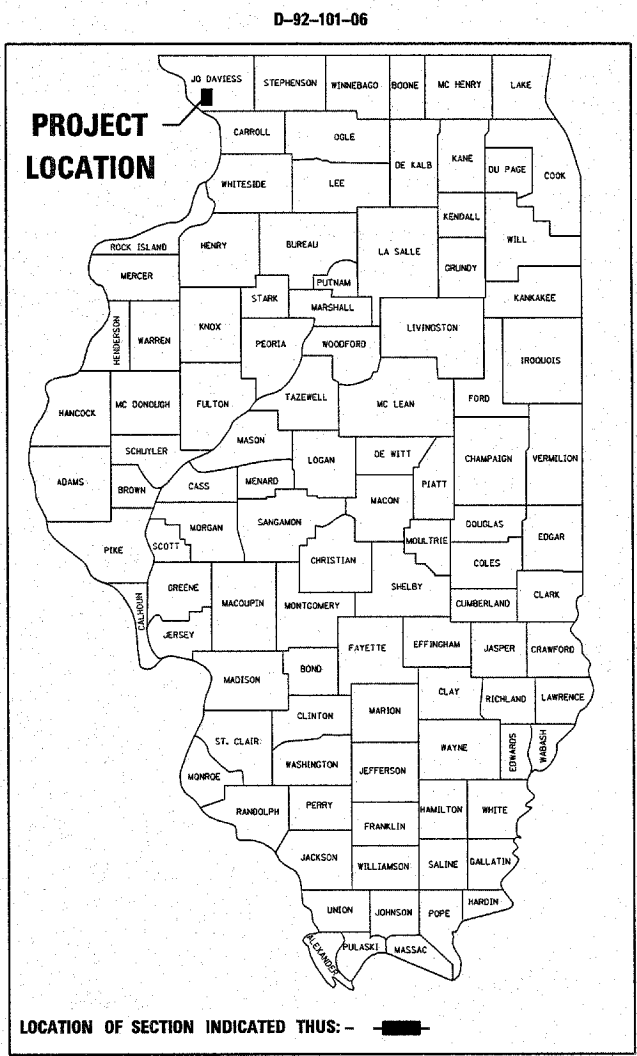
F.A.P. RTE.	SECTION	COUNTY	TOTAL SHEETS	SHEET NO.
301	29T-1	JO DAVIESS	30	1
FED. ROAD DIST. NO.	ILLINOIS	CONTRACT NO. 64C58		

INDEX OF SHEETS

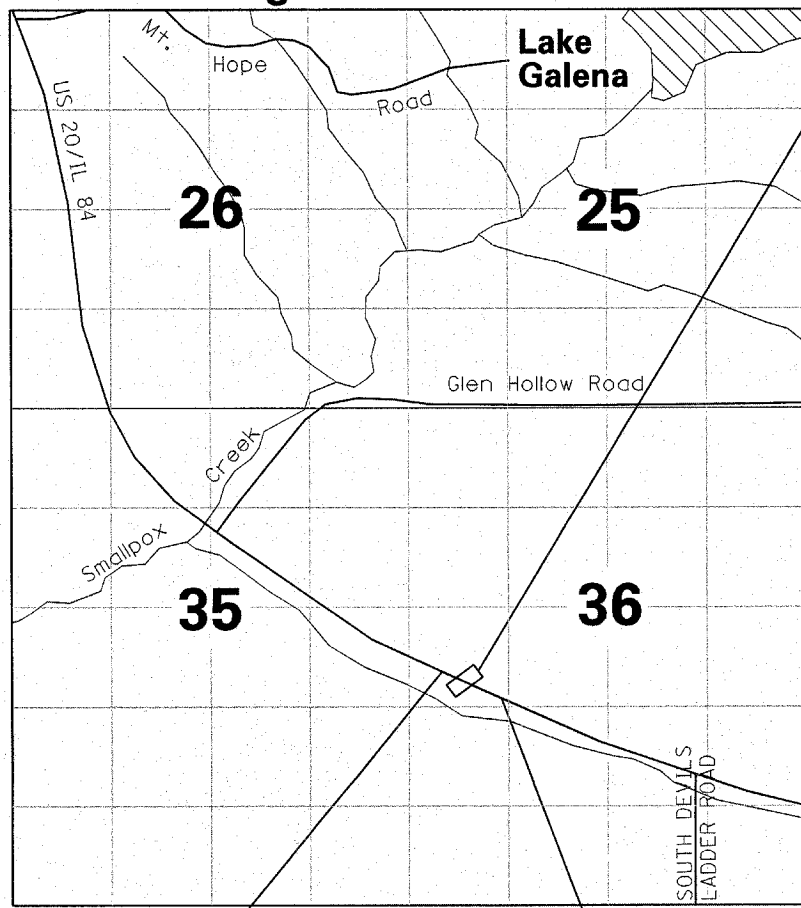
- 1 COVER SHEET
- 2 STATE STANDARDS AND GENERAL NOTES
- 3 SUMMARY OF QUANTITIES
- 4 TYPICAL SECTIONS
- 5 SCHEDULE OF QUANTITIES
- 6 ALIGNMENT, TIES, AND BENCHMARKS
- 7 ROADWAY PLAN AND PROFILE
- 8 TRAFFIC STAGING PLANS
- 9 EROSION CONTROL PLAN
- 10 STRUCTURE GENERAL PLAN
- 11 STAGE CONSTRUCTION
- 12 CULVERT PLAN
- 13 CULVERT SECTIONS
- 14 CULVERT DETAILS
- 15 GRATED DROP BOX
- 16 GRATED EXTENSION
- 17 BAR SPLICE ASSEMBLY DETAILS
- 18 BORING LOGS
- 19 STORM WATER POLLUTION PREVENTION PLAN EROSION CONTROL PLAN (DIST STD 2.1)
- 20-21 TYPICAL PAVEMENT MARKINGS (DIST STD 41.1)
- 22 DETAILS OF PLANTING AND BRACING TREES (DIST STD 92.1)
- 23 EROSION CONTROL DETAILS FOR SILT FENCE (DIST STD 29.2)
- 24 INFORMATIONAL WARNING SIGNS (FOR NARROW TRAVEL LANES) (DIST. STD. 39.2)
- 24 WITNESS MARKER & PERMANENT SURVEY MARKERS, TYPE II (DIST STD 66.2)
- 24 DELINEATOR AND POST ORIENTATION (DIST. STD. 37.4)
- 24 TYPICAL BENCHING ON EXISTING EMBANKMENT (DIST STD 50.4)
- 25 LETTERING FOR NAME PLATE (DIST STD 89.4)
- 25 TREE REPLACEMENT SCHEDULE (DIST STD 90.4)
- 25 STOP LINE SIGN FOR TEMPORARY SIGNALS (DIST STD 99.4)
- 26-30 CROSS SECTIONS

STATE OF ILLINOIS
DEPARTMENT OF TRANSPORTATION
DIVISION OF HIGHWAYS
**PROPOSED
HIGHWAY PLANS**

FAP ROUTE 301 (US. 20 /IL. 84)
SECTION 29T-1
PROJECT NHF-0301(047)
JO DAVIESS COUNTY
C-92-072-08
Range 1E - 4th PM



EAST GALENA TOWNSHIP - SECTION 36



IMPROVEMENT BEGINS STA. 922 + 25 LOCATION MAP 1" = 0.24 MILES IMPROVEMENT ENDS STA. 929 + 25

GROSS LENGTH OF PROJECT: 700 FEET (0.13 MILES)
NET LENGTH OF PROJECT: 700 FEET (0.13 MILES)

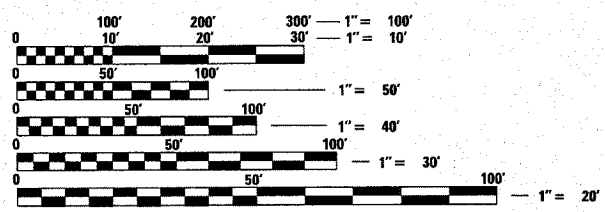
**PROPOSED CULVERT
STA. 924 + 32
S.N. 043-1077**



Deborah A. Zroka
DEBORAH A. ZROKA, S.E.
LIC. NO. 081-005152
EXPIRES 11/30/2008



Steven P. Fessenbecker
STEVEN P. FESSENBECKER, P.E.
LIC. NO. 062-051254
EXPIRES 11/30/2009



FULL SIZE PLANS HAVE BEEN PREPARED USING STANDARD ENGINEERING SCALES. REDUCED SIZED PLANS WILL NOT CONFORM TO STANDARD SCALES. IN MAKING MEASUREMENTS ON REDUCED PLANS, THE ABOVE SCALES MAY BE USED.

J.U.L.I.E.
JOINT UTILITY LOCATION INFORMATION FOR EXCAVATION
1-800-892-0123
OR 811

PROJECT ENGINEER: MASOOD AHMAD
PROJECT MANAGER: SAM ABDULLAH
CONSULTANT: KUDRNA & ASSOCIATES (630) 969-3060
CONTRACT NO. 64C58

KUDRNA & ASSOCIATES, LTD.
ILLINOIS PROFESSIONAL DESIGN FIRM
LICENSE NO. 184-000920
EXPIRES 4/30/2009

KUDRNA & ASSOCIATES, LTD.
400 South Green Street - Suite 304
Chicago, Illinois 60607
Phone (312) 738-1522
Fax (312) 738-9792
203 North Cass Avenue
Westmont, Illinois 60559
Phone (630) 969-3060
Fax (630) 969-3122

STATE OF ILLINOIS
DEPARTMENT OF TRANSPORTATION
DIVISION OF HIGHWAYS

SUBMITTED: MARCH 26 20 08

George F. Ryan
DEPUTY DIRECTOR OF HIGHWAYS, REGION 2 ENGINEER

May 9, 20 08
Eric E. Haral
ENGINEER OF DESIGN AND ENVIRONMENT

May 9, 20 08
Christine M. Reed
DIRECTOR OF HIGHWAYS, CHIEF ENGINEER

**PRINTED BY THE AUTHORITY
OF THE STATE OF ILLINOIS**