

# HORIZONTAL AND VERTICAL CONTROL

**HORIZONTAL CONTROL POINTS**

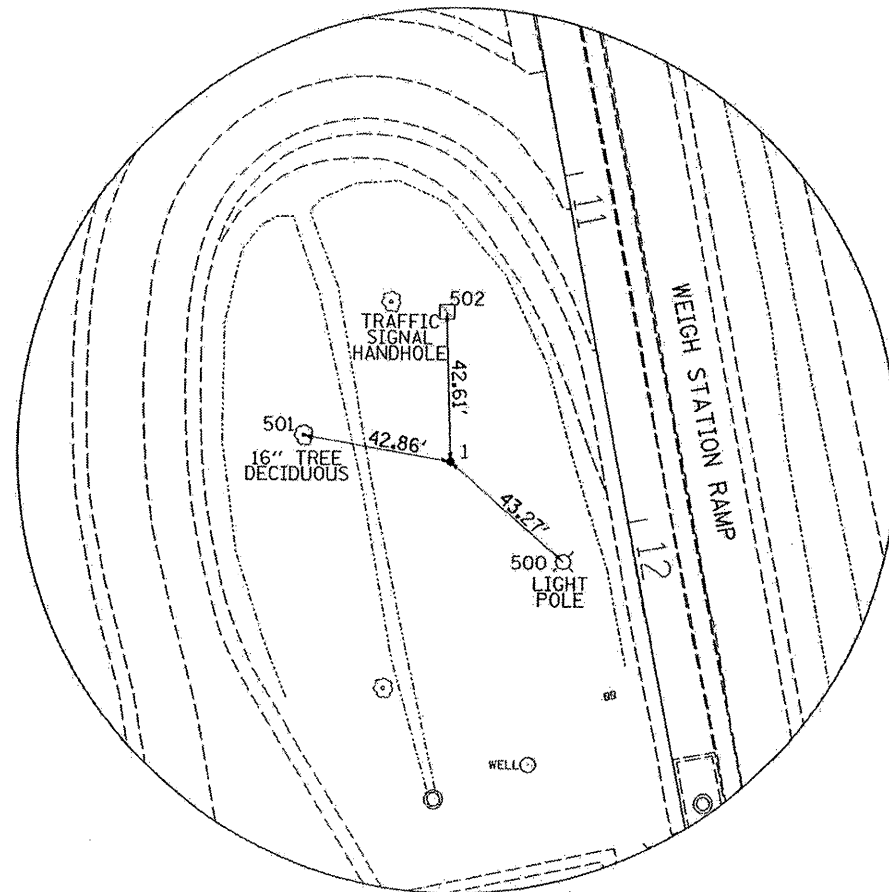
POINT	NORTH	EAST	ELEVATION	CHAIN	STATION	OFFSET	DESCRIPTION
1	1780982.3734	2248408.3186	693.3822	EBSCALE	11+73.5375	46.8223' RT	SURVEY POINT, PIN
2	1780732.2172	2248456.1068	695.7459	EBSCALE	14+28.2165	47.4786' RT	SURVEY POINT, PIN
903310	1781156.2220	2248633.9235	692.0208	EBSCALE	10+45.7649	207.7265' LT	PHOTO CONTROL H.& V., PIN

**REFERENCE TIES**

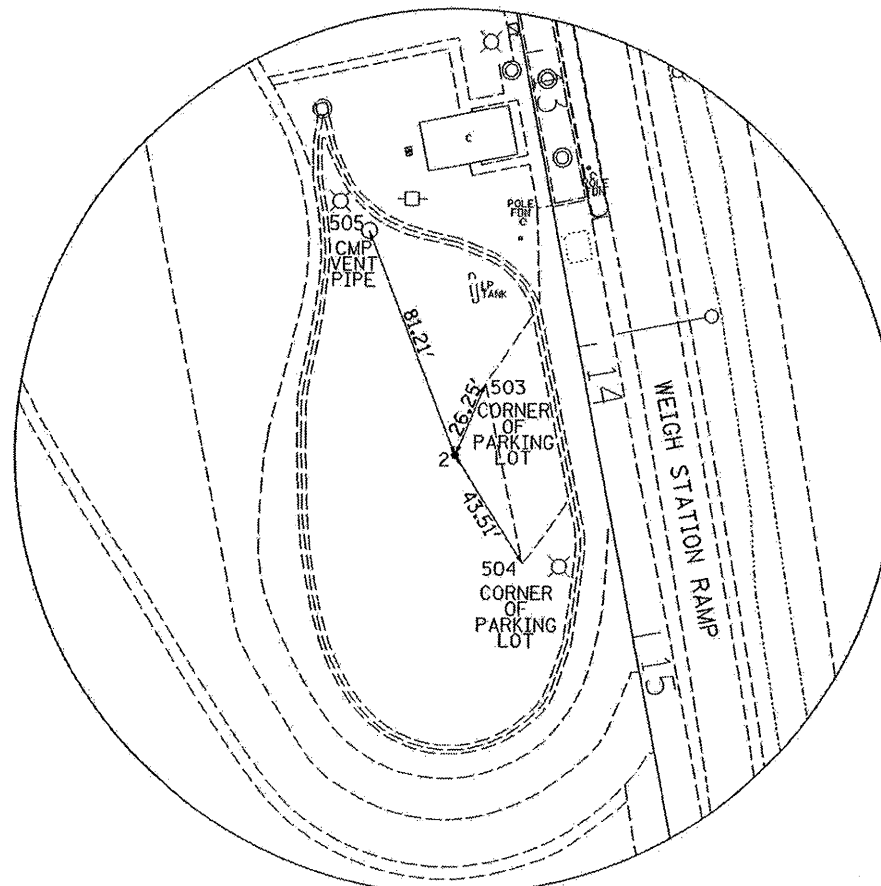
POINT	CHAIN	STATION	OFFSET	DESCRIPTION
500	ebscale	12+07.7474	20.3251' RT	LIGHT POLE
501	ebscale	11+58.3332	86.8943' RT	16" TREE DECIDUOUS
502	ebscale	11+31.4705	40.0646' RT	HANDHOLE, CORNER
503	ebscale	14+06.4193	32.8531' RT	PARKING LOT - EDGE, CORNER
504	ebscale	14+68.8519	31.9233' RT	PARKING LOT - EDGE, CORNER
505	ebscale	13+48.4434	62.6369' RT	VENT PIPE CMP
532	ebscale	10+17.1155	195.8709' LT	GUARDRAIL STEEL PLATE BEAM, END
533	ebscale	10+02.6891	207.8958' LT	DROP INLET, CENTER
534	ebscale	11+07.1553	268.4668' LT	LIGHT POLE, SHINER

**BENCH MARKS**

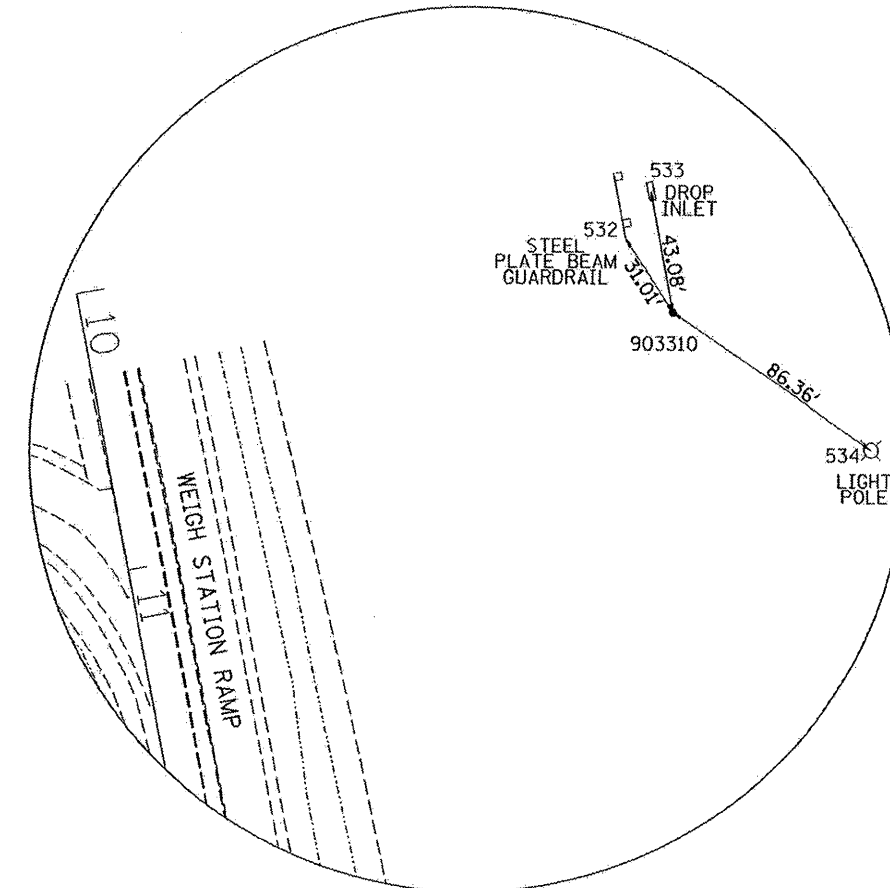
POINT	NORTH	EAST	ELEVATION	CHAIN	STATION	OFFSET	DESCRIPTION
410	1780779.3460	2248543.7940	692.6690	ebscale	13+98.6233	47.5709' LT	TRAFFIC SIGNAL FOUNDATION, CHISELED SQUARE



HORIZONTAL CONTROL POINT No. 1



HORIZONTAL CONTROL POINT No. 2



HORIZONTAL CONTROL POINT No. 903310