

SQUAD ENGINEER: JUSTIN RUSFELDT (815) 284-5900

PROJECT ENGINEER: SCOTT KULLERSTRAND

STATE OF ILLINOIS
DEPARTMENT OF TRANSPORTATION
DIVISION OF HIGHWAYS

PROPOSED
HIGHWAY PLANS

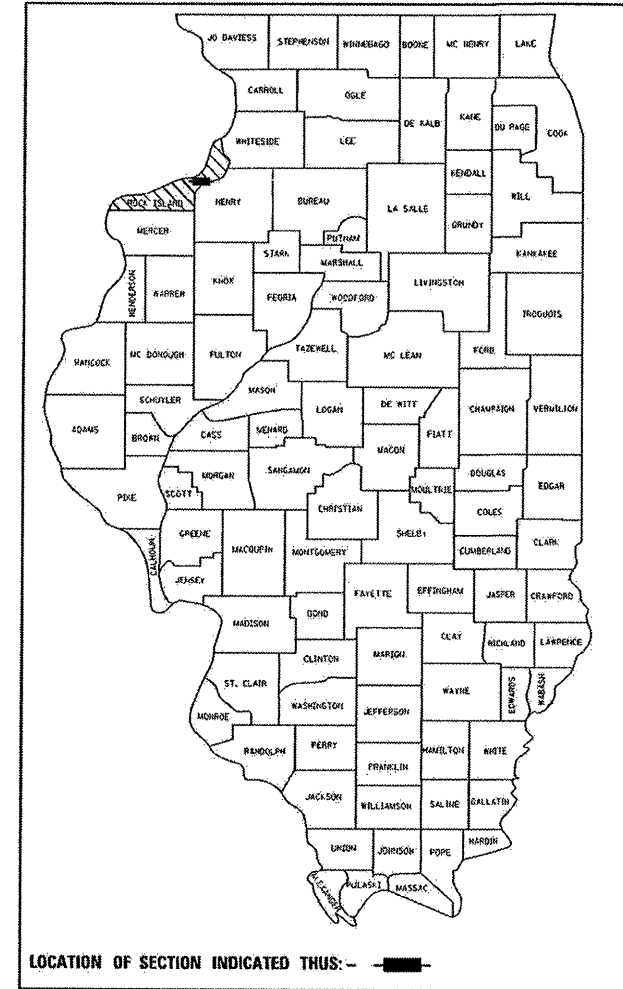
F.A.I. ROUTE 74 (I-74)-280)
SECTION (81-3WS)M-1

ROCK ISLAND COUNTY

C-92-070-08

F.A.I. RTE.	SECTION	COUNTY	TOTAL SHEETS	SHEET NO.
74	(81-3WS)M-1	ROCK ISLAND	16	1
FED. ROAD DIST. NO.	ILLINOIS	CONTRACT NO. 64D94		

D-92-030-08



INDEX OF SHEETS

- 1 COVER SHEET/INDEX OF SHEETS
- 2 SUMMARY OF QUANTITIES
- 3 GENERAL NOTES
- 4 TYPICAL SECTIONS
- 5 SCHEDULE OF QUANTITIES
- 6-7 HORIZONTAL & VERTICAL CONTROL
- 8-9 PLAN & PROFILE
- 10-11 PAVEMENT REMOVAL PLANS
- 12-13 PAVEMENT ELEVATION PLANS
- 14-15 PAVEMENT MARKING PLANS
- 16 WEIGH STATION RAMP CLOSURE DETAIL

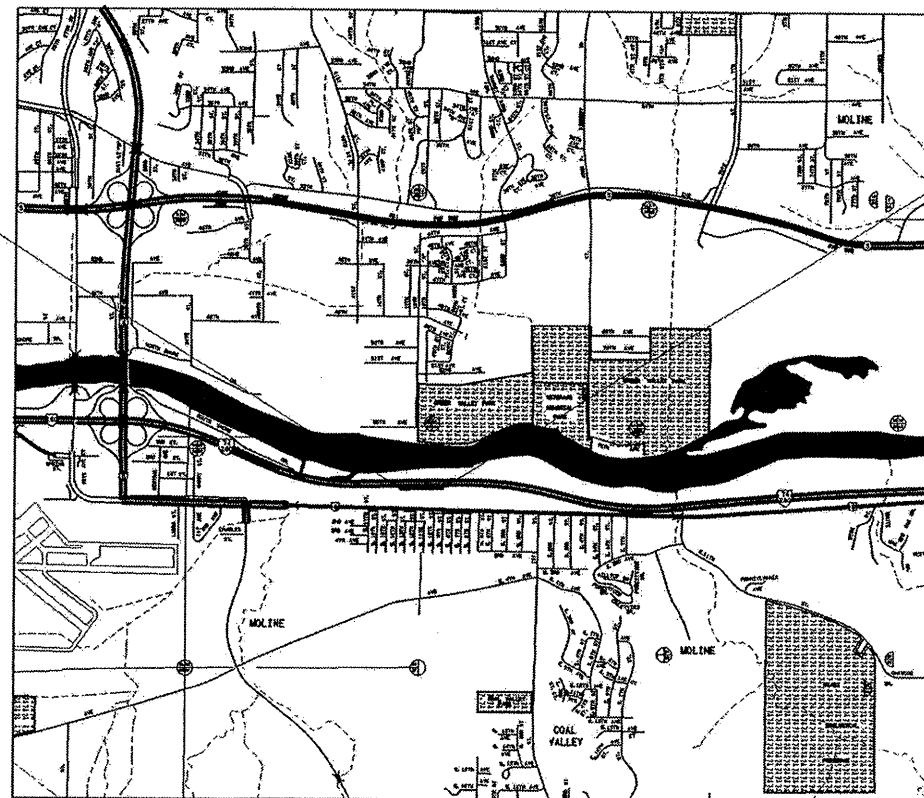
HIGHWAY STANDARDS

- 000001-05 STANDARD SYMBOLS, ABBREVIATIONS, & PATTERNS
- 001001-01 AREAS OF REINFORCEMENT BARS
- 001006 DECIMAL OF AN INCH & OF A FOOT
- 420001-07 PAVEMENT JOINTS
- 420101-04 7.2M (24') JOINTED PCC PAVEMENT
- 701001-01 OFF-RD OPERATIONS, 2L, 2W, MORE THAN 4.5M (15') AWAY
- 701006-02 OFF-RD OPERATIONS, 2L, 2W 4.5M (15') TO 600MM (24") FROM PAVEMENT EDGE
- 701901 TRAFFIC CONTROL DEVICES
- 720011 METAL POSTS FOR SIGNS, MARKERS & DELINEATORS
- 728001 TELESCOPING STEEL SIGN SUPPORT
- 729001 APPLICATIONS OF TYPES A & B METAL POSTS (FOR SIGNS & MARKERS)



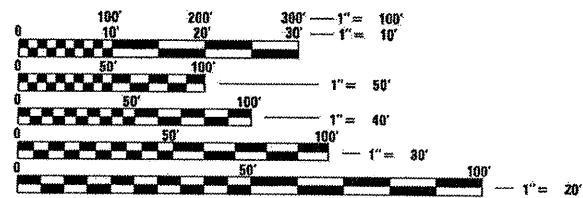
IMPROVEMENT BEGINS
STA. 313 + 57.10

IMPROVEMENT ENDS
STA. 323 + 66.81



R.1W.
MAP IS NOT TO SCALE

TOWNSHIP, COAL VALLEY SECTION 23



FULL SIZE PLANS HAVE BEEN PREPARED USING STANDARD ENGINEERING SCALES. REDUCED SIZED PLANS WILL NOT CONFORM TO STANDARD SCALES. IN MAKING MEASUREMENTS ON REDUCED PLANS, THE ABOVE SCALES MAY BE USED.

J.U.L.I.E.
JOINT UTILITY LOCATION INFORMATION FOR EXCAVATION
1-800-892-0123

CONTRACT NO. 64D94

NET LENGTH OF PROJECT = 1000 LIN. FEET = 0.189 MILES
GROSS LENGTH OF PROJECT = 1000 LIN. FEET = 0.189 MILES

STATE OF ILLINOIS
DEPARTMENT OF TRANSPORTATION
DIVISION OF HIGHWAYS

SUBMITTED *March 12, 2008*
George E. Ryan
DEPUTY DIRECTOR OF HIGHWAYS, REGION ENGINEER

May 9, 2008
Eric E. Harn
ENGINEER OF DESIGN AND ENVIRONMENT

May 9, 2008
Christine M. Reed
DIRECTOR OF HIGHWAYS, CHIEF ENGINEER

PRINTED BY THE AUTHORITY
OF THE STATE OF ILLINOIS

SUMMARY OF QUANTITIES

I-74 EB

URBAN
J000

PAY CODE	ITEM	UNIT	100% State QUANTITY
20200100	EARTH EXCAVATION	CU YD	1625
25000115	SEEDING, CLASS 1B	ACRE	1
25100115	MULCH, METHOD 2	ACRE	1
28000250	TEMPORARY EROSION CONTROL SEEDING	POUND	400
35100100	AGGREGATE BASE COURSE, TYPE A	TON	1300
42000501	PORTLAND CEMENT CONCRETE PAVEMENT 10" (JOINTED)	SQ YD	2750
44000100	PAVEMENT REMOVAL	SQ YD	2750
44004250	PAVED SHOULDER REMOVAL	SQ YD	2025
44213200	SAW CUTS	FOOT	176
48300500	PORTLAND CEMENT CONCRETE SHOULDERS 10"	SQ YD	2025
67100100	MOBILIZATION	L SUM	1
* 78005110	EPOXY PAVEMENT MARKING - LINE 4"	FOOT	4232
* 78005140	EPOXY PAVEMENT MARKING - LINE 8"	FOOT	38
Z0013798	CONSTRUCTION LAYOUT	L SUM	1
Z0017202	DOWEL BARS 1 1/2"	EACH	1813

* SPECIALTY ITEM

FILE NAME = C:\Projects\p203008\403008shts.dgn	USER NAME = ditzlerse	DESIGNED -	REVISED -	STATE OF ILLINOIS DEPARTMENT OF TRANSPORTATION	SUMMARY OF QUANTITIES	F.A.I. RTE. -14-	SECTION (81)-3W5M-1	COUNTY BOCK ISLAND	TOTAL SHEETS 2	SHEET NO. 2
PLOT SCALE = 20,000' / 1" IL		CHECKED -	REVISED -	SCALE: _____ SHEET NO. ____ OF ____ SHEETS STA. _____ TO STA. _____		CONTRACT NO. 64094				
PLOT DATE = Wed Feb 27 14:33:30 2008		DATE -	REVISED -	FED. ROAD DIST. NO. - ILLINOIS FED. AID PROJECT						

GENERAL NOTES

ROUTE NO.	SEC.	COUNTY	TOTAL SHEETS	SHEET NO.
FAI 74/280	(81-3WS)M-1	Rock Island		3
FED ROAD DIST. NO.	ILLINOIS	PROJECT		
Contract #64D94				

The Contractor shall be responsible for protecting utility property during construction operations as outlined in Article 107.31 of the Standard Specifications. A minimum of 48 hours advance notice is required for non-emergency work. The JULIE number is 800-892-0123. The following listed utilities located within the project limits or immediately adjacent to the project construction limits are members of JULIE:

Mr. Dave Creen
AT&T
635-18th Street
Rock Island, IL 61201
(309)-793-4456

Mr. Matthew J. Chancellor
MidAmerican Energy Company
2811 5th Ave.
Rock Island, IL 61201
(309)-793-3833

Mr. Steve Hampton
MidAmerican Energy Company
2811 5th Ave.
Rock Island, IL 61201
(309)-793-3707

JULIE 1-800-892-0123

Following are the known utilities located within the project limits or immediately adjacent to the project construction limits which are not members of JULIE and should be notified individually by the contractor:

The removal of Bituminous Surfacing not on a rigid type base removed in conjunction with the base shall be removed as EARTH EXCAVATION. The removal of Bituminous Surfacing on a rigid type base removed in conjunction with the base shall be included in the contract unit price for PAVEMENT REMOVAL of the type specified.

The final top 100 mm (four inches) of soil in any right-of-way area disturbed by the Contractor must be capable of supporting vegetation. The soil must be from the A horizon (zero to 2' deep) of soil profiles of local soils. Shaping of foreslopes adjacent to concrete shoulders shall be included in the contract cost of EARTH EXCAVATION.

All Borrow/Waste/Use sites must be approved by the Department prior to removing any material from the project or initiating any earthmoving activities, including temporary stockpiling outside the limits of construction.

The Contractor shall seed all disturbed areas within the project limits. Seeding Class 1B shall be used.

Fertilizer shall be applied to all disturbed areas and incorporated into the seedbed prior to seeding or placement of sod at the rate specified in Sections 250 and 252 of the Standard Specifications. This work shall be included in the cost of SEEDING CLASS 1B.

Previously pugmilled stockpiles of "Type A" older than 1 month will not be approved for use until a moisture check is run to verify moisture content. Material shipped to projects without being tested will not be accepted.

Except for the top 75 mm (3"), all aggregate bases and subbases 300 mm (12") in thickness shall be constructed of aggregate gradation CA-2. If the specified thickness exceeds 300 mm (12"), the bases or subbases shall be constructed of topsize 150 mm (6") breaker-run crushed stone with 70% to 90% by weight, passing the 4" sieve and 15% to 40% by weight, passing the 50 mm (2") size sieve, except for the top 75 mm (3"). The breaker-run crushed stone shall be reasonably uniformly graded from coarse to fine and be taken from a quarry ledge capable of producing Class "D" quality aggregate. The top 75 mm (3") shall be gradation CA-6 or CA-10 regardless of thickness. The water necessary to achieve compaction in all but the top 75 mm (3") layer may be added after the subbase or base course is placed on the grade.

The Contractor will be required to furnish 140 mm (5 1/2") high brass stencils as approved by the Engineer and install stationing at 250' intervals. Stationing shall be placed on both lanes of 2-lane highways and on the outside lanes in both directions on 4-lane highways. The stations shall be placed 150 mm (6") inside the pavement marking edge so they can be read from the shoulder. This work will be included in the cost of the final pavement surface.

Tie bars shall be installed to tie PCC appurtenance to adjacent existing concrete pavement.

Tie the following
to the existing
concrete pavement

Length, size, and
spacing of Tie Bars

PCC Pavement	Std. 420101	600 mm (24") long No. 20 (No. 6) @ 750 mm (30") centers
--------------	-------------	--

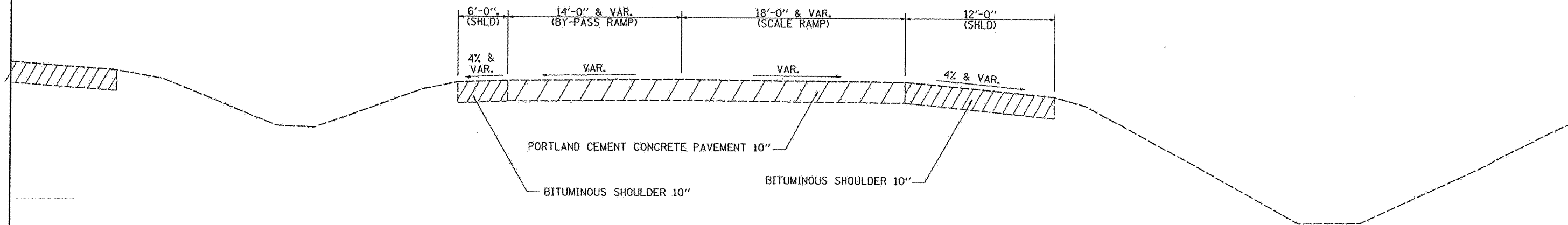
Tie bars to be installed in accordance with the applicable portions of the Article 420.05(b) of the Standard Specifications. See Highway Standard 420001 for detail on longitudinal construction joint grouted-in-place tie bar. The cost of the tie bars to be included in the cost of the PCC appurtenance adjacent to the existing pavement.

The Contractor shall be required to notify the Department of Transportation at (815)285-5474 one week prior to closing and opening of the ramp. The Contractor shall also be required to notify the Operations Lieutenant, Darin Johnson, at (309) 752-4915, two weeks prior to closing and opening the ramp.

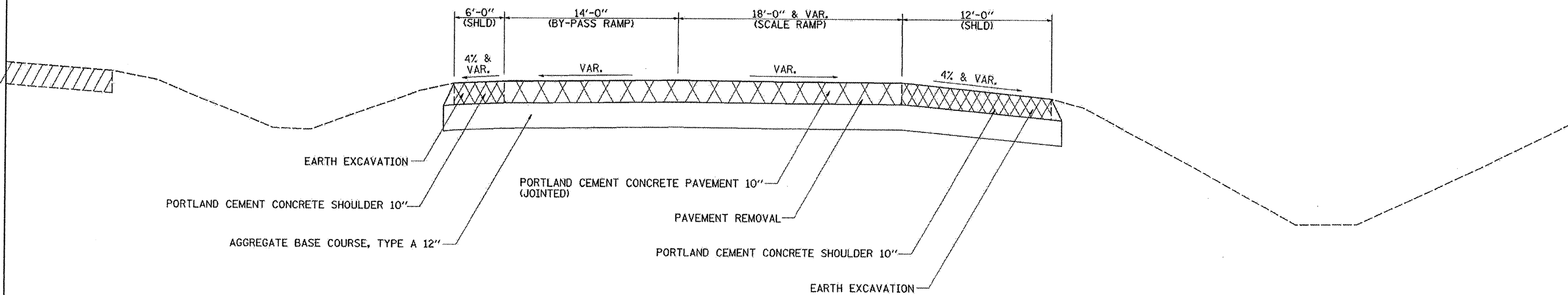
Program #5
(Arch. Size)
Enlarge
200%
Enlarge 107%

TYPICAL SECTIONS

EXISTING TYPICAL CROSS SECTION
WEIGH STATION - RAMPS
STATION 313+57.10 TO STATION 323+66.81



PROPOSED TYPICAL CROSS SECTION
WEIGH STATION - RAMPS
STATION 313+57.10 TO STATION 323+66.81



FILE NAME = C:\Projects\p203008\p203008shts.dgn	USER NAME = dztalvsa	DESIGNED -	REVISED -
		DRAWN -	REVISED -
		CHECKED -	REVISED -
		DATE -	REVISED -

STATE OF ILLINOIS
DEPARTMENT OF TRANSPORTATION

TYPICAL SECTIONS

SCALE: _____ SHEET NO. _____ OF _____ SHEETS STA. _____ TO STA. _____

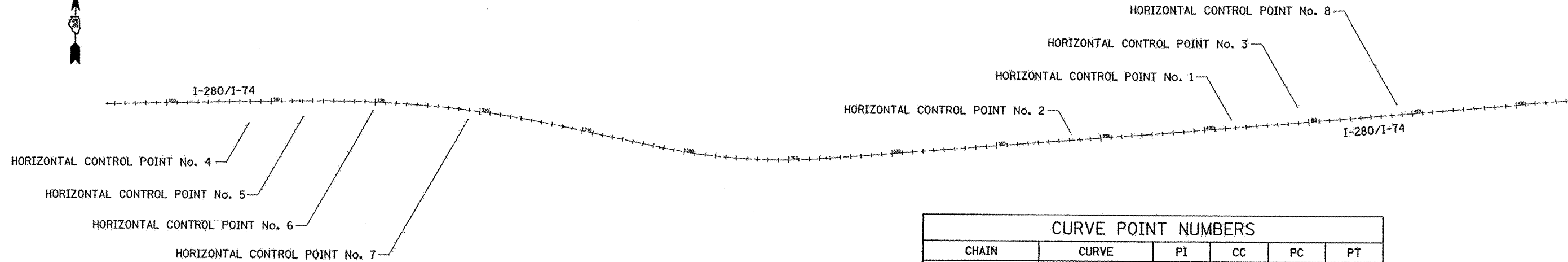
F.A.J. RTE. 74	SECTION 181-3WSM-1	COUNTY ROCK ISLAND	TOTAL SHEETS 4	SHEET NO. 4
FED. ROAD DIST. NO. - ILLINOIS FED. AID PROJECT			CONTRACT NO. 64D94	

SCHEDULE OF QUANTITIES

20200100	EARTH EXCAVATION CU YD LOCATION 1625 313+57.10 TO 323+66.81 (UNDER PAVEMENT & SHLD) 1625 TOTAL	44213200	SAWCUTS FOOT LOCATION 126 323+66.81 EB 50 313+57.10 EB 176 TOTAL
25000115	SEEDING CLASS 1B ACERS LOCATION 1 PROJECT LIMITS 1 TOTAL	48300500	PORTLAND CEMENT CONCRETE SHOULDERS 10" SQ YD LOCATION 675 313+57.10 TO 323+66.81 LT (6 FT) EB 1350 313+57.10 TO 323+66.81 RT (12FT) EB 2025 TOTAL
25100115	MULCH METHOD 2 ACERS LOCATION 1 PROJECT LIMITS 1 TOTAL	67100100	MOBILIZATION L SUM LOCATION 1 I-74 / 280 EB 1 TOTAL
28000250	TEMPORARY EROSION CONTROL SEEDING POUND LOCATION 400 PROJECT LIMITS 400 TOTAL	78005110	EPOXY PAVEMENT MARKING - LINE 4" FOOT LOCATION 1010 313+57.10 TO 323+66.81 LT (YELLOW) EB 1010 313+57.10 TO 323+66.81 RT (WHITE) EB 2212 313+57.10 TO 319+59.10 (PAINTED MEDIAN, WHITE) EB 4232 TOTAL
35100100	AGGREGATE BASE COURSE, TYPE A TON LOCATION 1300 313+57.10 TO 323+66.81 (&VARIOUS) 1300 TOTAL	78005140	EPOXY PAVEMENT MARKING - LINE 8" FOOT LOCATION 38 I-74 / 280 EB (PAINTED MEDIAN) 38 TOTAL
42000501	PORTLAND CEMENT CONCRETE PAVEMENT 10" (JOINTED) SQ YD LOCATION 1770 313+57.10 TO 323+66.81 LT (16.5-15FT) EB 980 313+57.10 TO 323+66.81 RT (16.5-1FT) EB 2750 TOTAL	Z0013798	CONSTRUCTION LAYOUT L SUM LOCATION 1 PROJECT LIMITS 1 TOTAL
44000100	PAVEMENT REMOVAL SQ YD LOCATION 1770 313+57.10 TO 323+66.81 LT (16.5-15FT) EB 980 313+57.10 TO 323+66.81 RT (16.5-1FT) EB 2750 TOTAL	Z0017202	DOWEL BARS 1 1/2" EACH LOCATION 1813 313+57.10 TO 323+66.81 1813 TOTAL
44004250	PAVED SHOULDER REMOVAL SQ YD LOCATION 675 313+57.10 TO 323+66.81 LT (16.5-15FT) EB 1350 313+57.10 TO 323+66.81 RT (16.5-1FT) EB 2025 TOTAL		

FILE NAME = C:\Projects\p203006\03000shta.dgn	USER NAME = dxtlorso	DESIGNED -	REVISED -	STATE OF ILLINOIS DEPARTMENT OF TRANSPORTATION	SCHEDULE OF QUANTITIES	F.A.I. RTE. 14	SECTION 1B1-3WSIM-1	COUNTY ROCK ISLAND	TOTAL SHEETS 5	SHEET NO. 5
PLOT SCALE = 20.0000' / IN.		CHECKED -	REVISED -	SCALE: _____ SHEET NO. _____ OF _____ SHEETS STA. _____ TO STA. _____		CONTRACT NO. 64094				
PLOT DATE = Wed Feb 27 14:33:13 2008		DATE -	REVISED -	FED. ROAD DIST. NO. - ILLINOIS FED. AID PROJECT						

HORIZONTAL AND VERTICAL CONTROL



CURVE POINT NUMBERS					
CHAIN	CURVE	PI	CC	PC	PT
I280I74	310	310	311	312	313
I280I74	320	320	321	322	323

Chain I280I74 contains:
303 CUR 310 CUR 320 332

Beginning chain I280I74 description

Point 303 N 1,743,755.3585 E 2,211,908.4533 Sta 294+29.8410

Course from 303 to PC 310 88° 47' 23.5360" Dist 1,844.8250'

Curve Data

Curve 310

P.I. Station 325+48.7344 N 1,743,821.2270 E 2,215,026.6511
 Delta = 12° 40' 58.4552" (RT)
 Degree = 0° 29' 59.1895"
 Tangent = 1,274.0684'
 Length = 2,537.7236'
 Radius = 11,464.3182'
 External = 70.5785'
 Long Chord = 2,532.5456'
 Mid. Ord. = 70.1467'
 P.C. Station 312+74.6660 N 1,743,794.3197 E 2,213,752.8669
 P.T. Station 338+12.3895 N 1,743,567.8118 E 2,216,275.2628
 C.C. N 1,732,332.5585 E 2,213,994.9837

Course from PT 310 to PC 320 101° 28' 21.9912" Dist 949.3125'

Curve Data

Curve 320

P.I. Station 355+68.8228 N 1,743,218.4532 E 2,217,996.6013
 Delta = 16° 04' 35.4829" (LT)
 Degree = 1° 00' 09.0144"
 Tangent = 807.1207'
 Length = 1,603.6368'
 Radius = 5,715.2670'
 External = 56.7102'
 Long Chord = 1,598.3814'
 Mid. Ord. = 56.1530'
 P.C. Station 347+61.7021 N 1,743,378.9914 E 2,217,205.6074
 P.T. Station 363+65.3389 N 1,743,283.2361 E 2,218,801.1180
 C.C. N 1,748,980.0635 E 2,218,342.3871

Course from PT 320 to 332 85° 23' 46.5084" Dist 7,198.7266'

Point 332 N 1,743,861.0356 E 2,225,976.6188 Sta 435+64.0655

Ending chain I280I74 description

HORIZONTAL CONTROL POINTS

POINT	NORTH	EAST	ELEVATION	CHAIN	STATION	OFFSET	DESCRIPTION
1	1743673.4893	2222679.1644	579.9044	I280I74	402+62.1966	77.7261' LT	TOPO SURVEY POINT, PIN
2	1743545.8808	2221135.8936	576.8636	I280I74	387+13.6626	74.3986' LT	TOPO SURVEY POINT, PIN
3	1743797.0768	2223311.9200	577.9667	I280I74	409+02.8303	150.1273' LT	TOPO SURVEY POINT, DISK
4	1743583.9949	2213269.0222	570.6100	I280I74	307+86.4874	200.0595' RT	TOPO SURVEY POINT, DISK
5	1743641.6162	2213783.5238	569.8068	I280I74	313+02.4628	153.2837' RT	TOPO SURVEY POINT, DISK
6	1743705.6763	2214457.6842	569.7850	I280I74	319+82.9546	81.7921' RT	TOPO SURVEY POINT, PIN
7	1743628.0080	2215362.4970	570.1596	I280I74	328+98.0364	86.389' RT	TOPO SURVEY POINT, NAIL
8	1743824.6840	2224266.4826	574.4410	I280I74	418+56.5290	101.0283' LT	TOPO SURVEY POINT, DISK

REFERENCE TIES

POINT	CHAIN	STATION	OFFSET	DESCRIPTION
500	I280I74	402+56.3728	54.8312' LT	PAVEMENT STATION NUMBER
501	I280I74	402+10.3194	140.6352' LT	HEADWALL, CORNER
502	I280I74	403+10.5532	148.1085' LT	TREE EVERGREEN
503	I280I74	409+71.3550	186.6511' LT	TREE DECIDUOUS
504	I280I74	409+21.5076	143.1441' LT	SHOULDER, CORNER
505	I280I74	409+45.6031	132.4781' LT	PAVEMENT STATION NUMBER
506	I280I74	313+21.2180	133.236' RT	PAVEMENT STATION NUMBER
507	I280I74	312+87.6066	144.3139' RT	SHOULDER, CORNER
508	I280I74	313+51.5133	169.4951' RT	PIPE CULVERT, RCP
509	I280I74	320+50.0148	54.9514' RT	PAVEMENT STATION NUMBER
510	I280I74	319+70.4919	133.4328' RT	HEADWALL, CORNER
511	I280I74	319+51.7167	133.505' RT	HEADWALL, CORNER
512	I280I74	328+05.3007	54.5511' RT	PAVEMENT STATION NUMBER
513	I280I74	328+22.4422	121.8867' RT	TREE DECIDUOUS
514	I280I74	329+01.2914	118.0779' RT	TREE DECIDUOUS

FILE NAME = c:\projects\p203008\vd03008hvc.dgn	USER NAME = ditzlerse	DESIGNED -	REVISED -
		DRAWN -	REVISED -
		CHECKED -	REVISED -
		DATE -	REVISED -

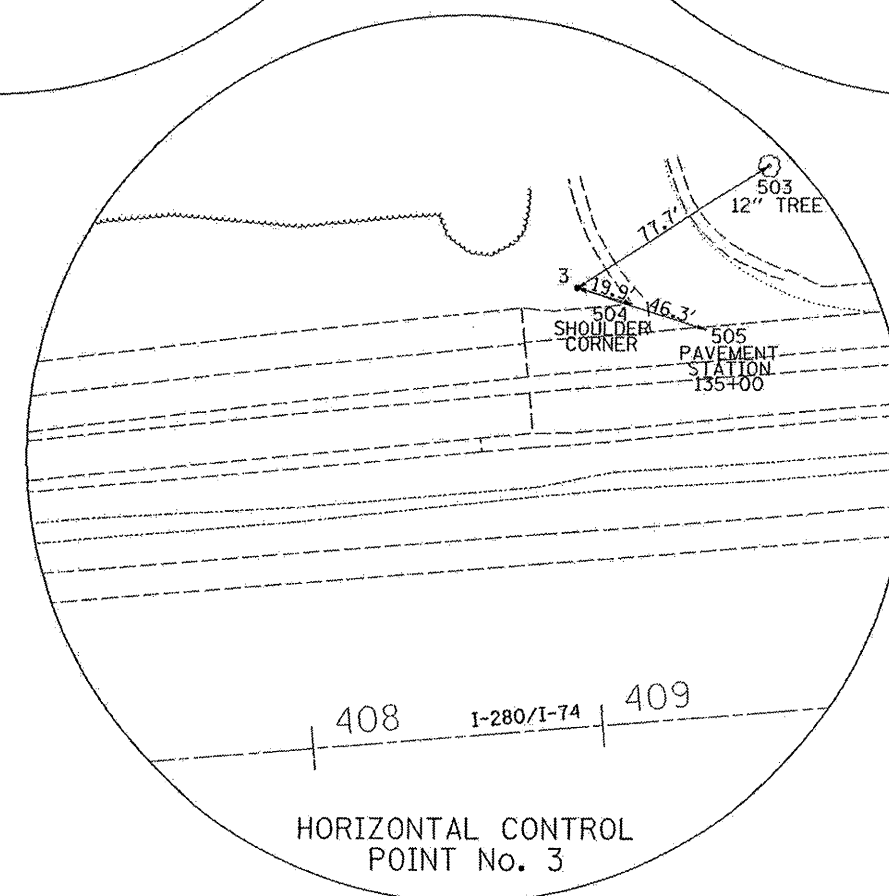
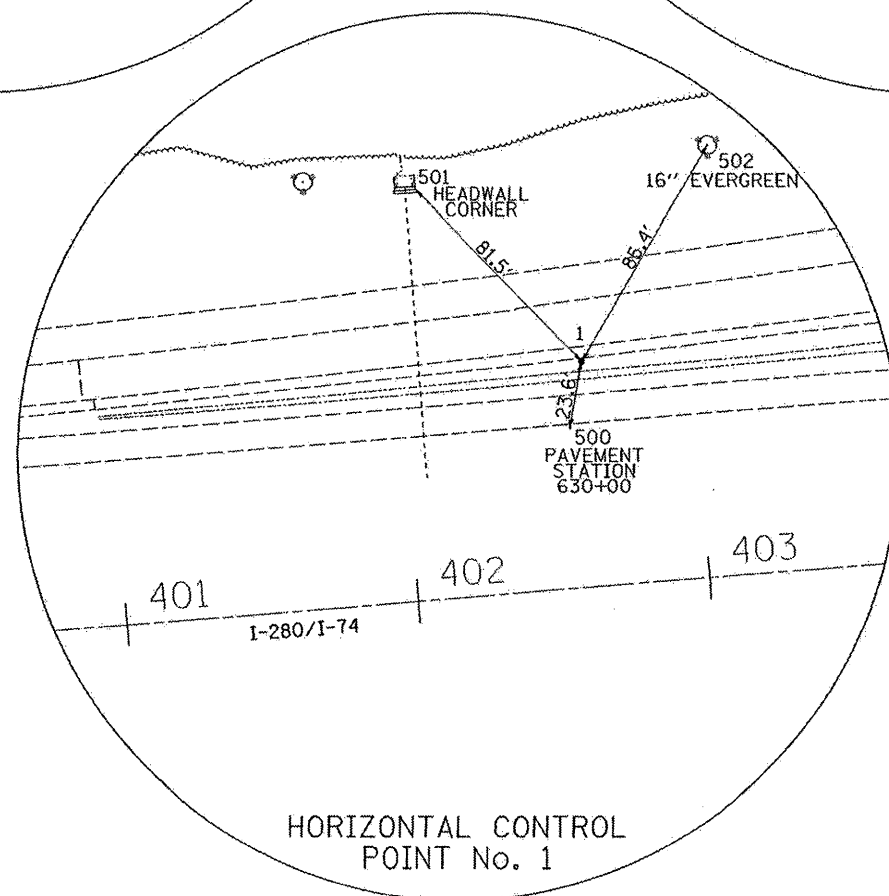
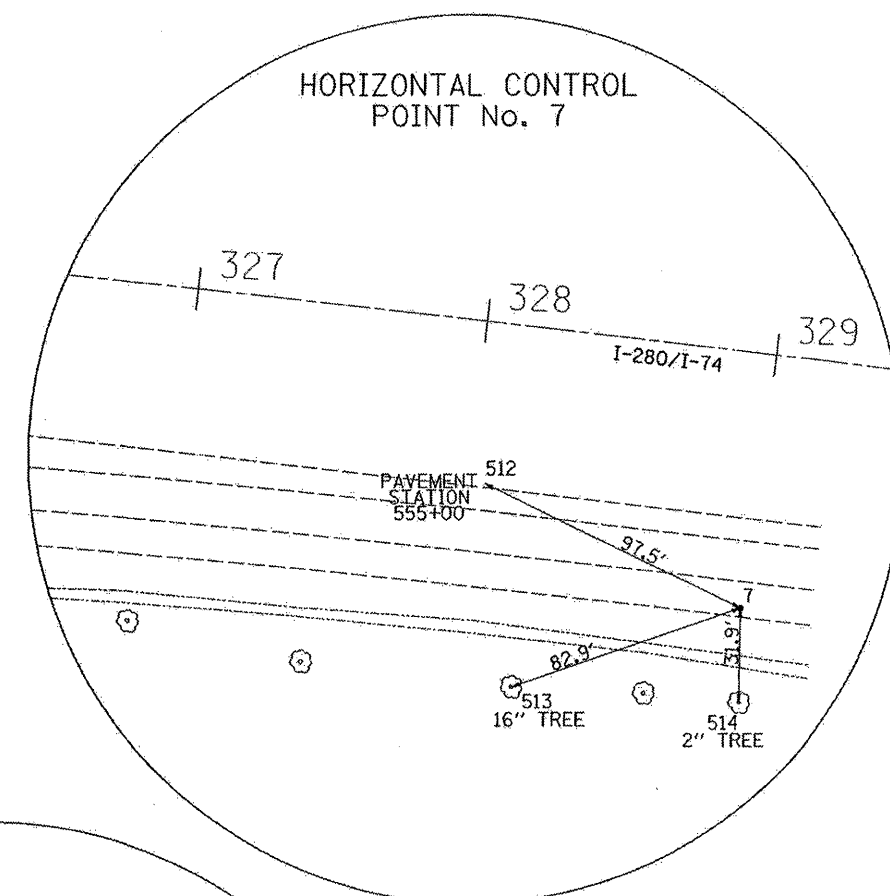
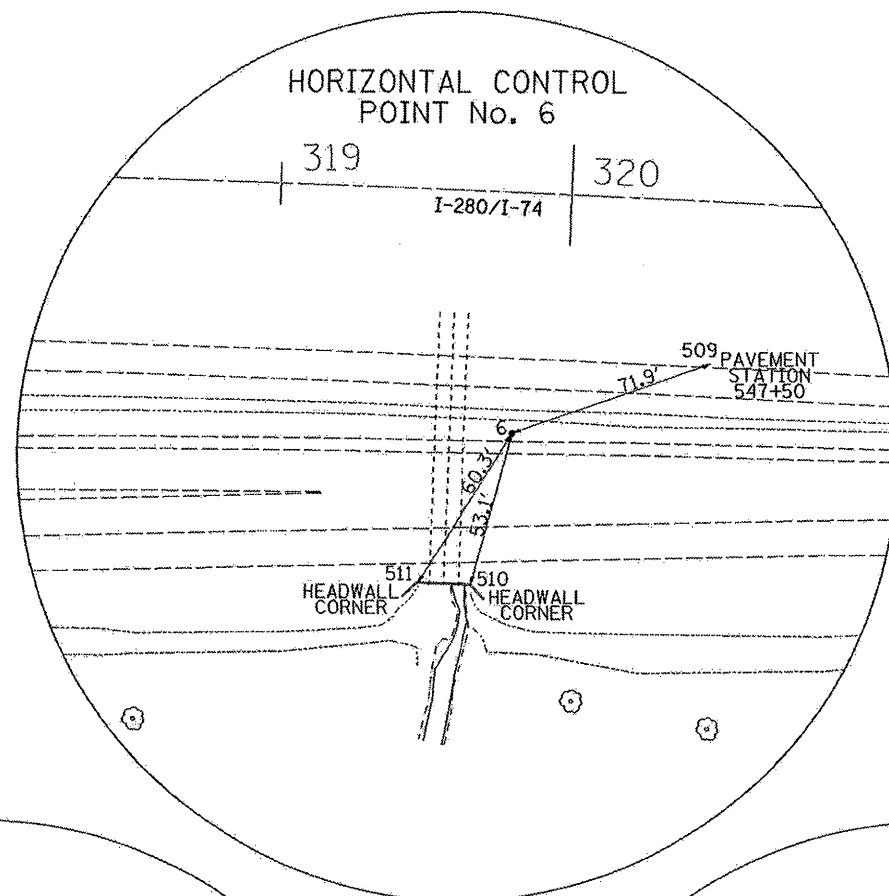
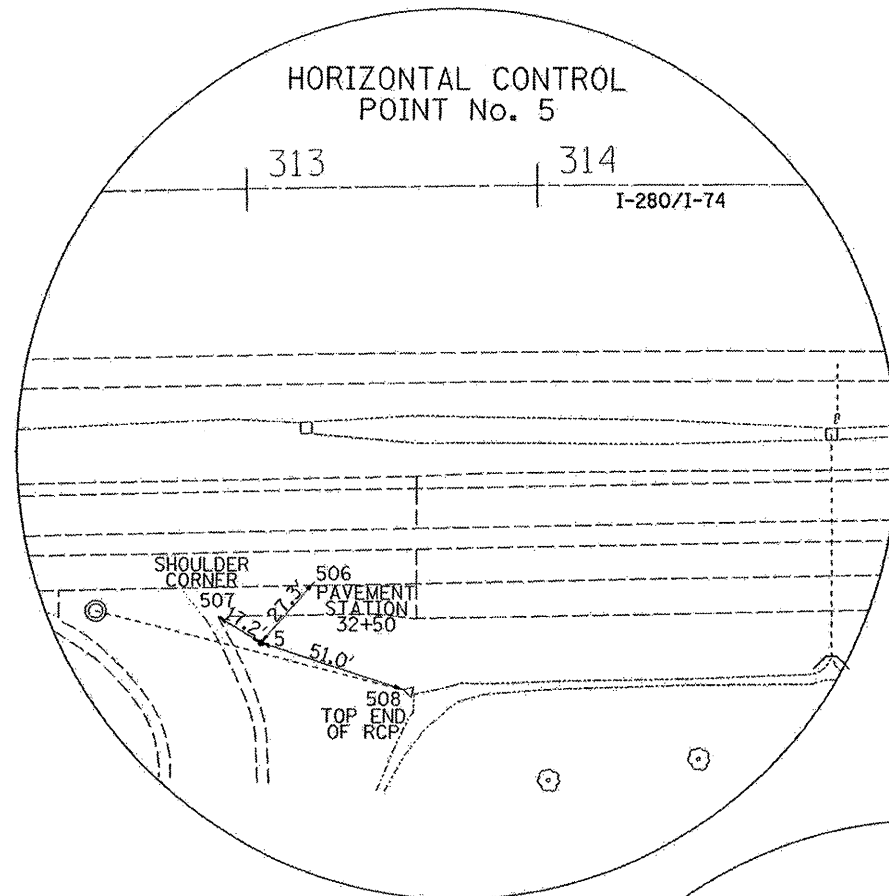
**STATE OF ILLINOIS
DEPARTMENT OF TRANSPORTATION**

HORIZONTAL AND VERTICAL CONTROL

SCALE: SHEET NO. OF SHEETS STA. TO STA.

F.A.I. RTE. 74	SECTION 181-3WSM-1	COUNTY ROCK ISLAND	TOTAL SHEETS 6	SHEET NO. 6
FED. ROAD DIST. NO. ILLINOIS FED. AID PROJECT			CONTRACT NO. 64D75	

HORIZONTAL AND VERTICAL CONTROL



FILE NAME =	USER NAME = dktzlerse	DESIGNED -	REVISED -
ci:\projects\p203008\d03086hvc.dgn		DRAWN -	REVISED -
	PLOT SCALE = 500.0000' / IN.	CHECKED -	REVISED -
	PLOT DATE = Mon Feb 04 10:04:14 2008	DATE -	REVISED -

**STATE OF ILLINOIS
DEPARTMENT OF TRANSPORTATION**

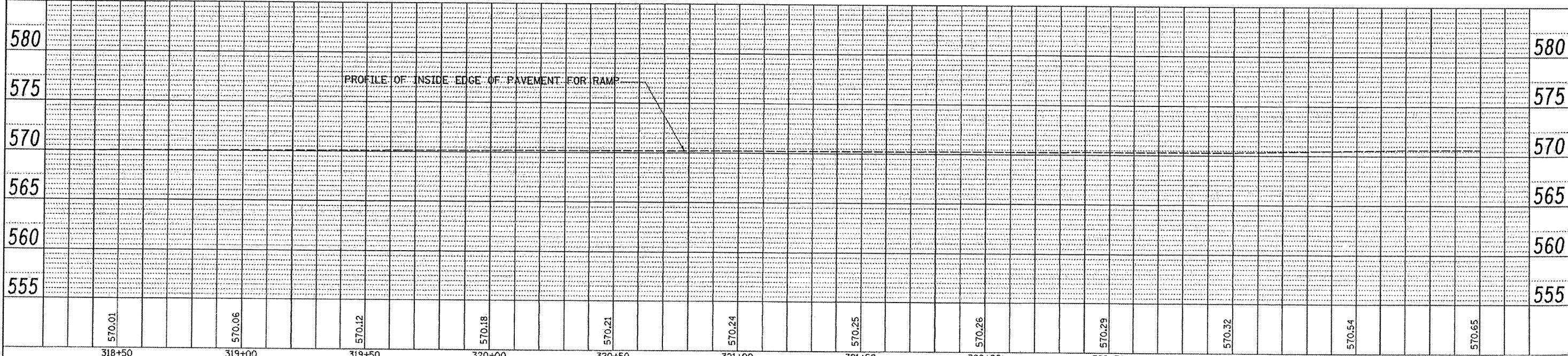
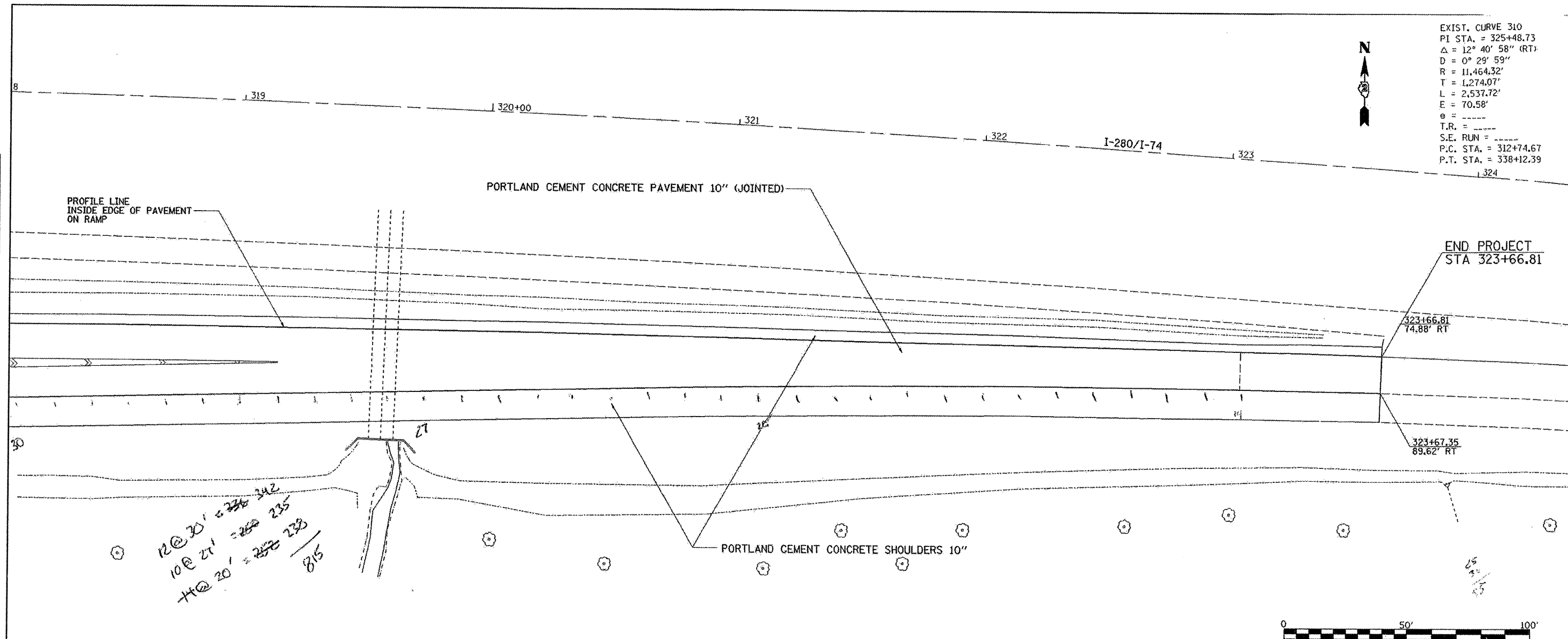
HORIZONTAL AND VERTICAL CONTROL			
SCALE:	SHEET NO.	OF SHEETS	STA. TO STA.

F.A.I. RTE.	SECTION	COUNTY	TOTAL SHEETS	SHEET NO.
74	(81-3WSM-1)	ROCK ISLAND	7	7
FED. ROAD DIST. NO.		ILLINOIS FED. AID PROJECT		
		CONTRACT NO. 64075		

DATE	
BY	
PLANNED	
DESIGNED	
CHECKED	
DRAWN	
DATE	
BY	
PLANNED	
DESIGNED	
CHECKED	
DRAWN	
DATE	
BY	

DATE	
BY	
PLANNED	
DESIGNED	
CHECKED	
DRAWN	
DATE	
BY	
PLANNED	
DESIGNED	
CHECKED	
DRAWN	
DATE	
BY	

EXIST. CURVE 310
 PI STA. = 325+48.73
 $\Delta = 12^\circ 40' 58''$ (RT)
 D = $0^\circ 29' 59''$
 R = 11,464.32'
 T = 1,274.07'
 L = 2,537.72'
 E = 70.58'
 $\theta =$ -----
 T.R. = -----
 S.E. RUN = -----
 P.C. STA. = 312+74.67
 P.T. STA. = 338+12.39

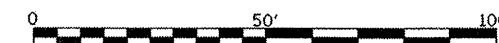
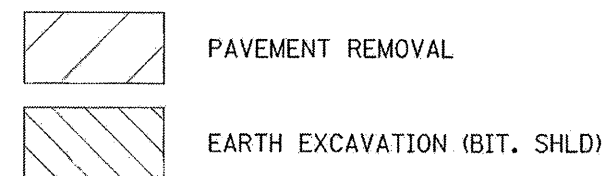
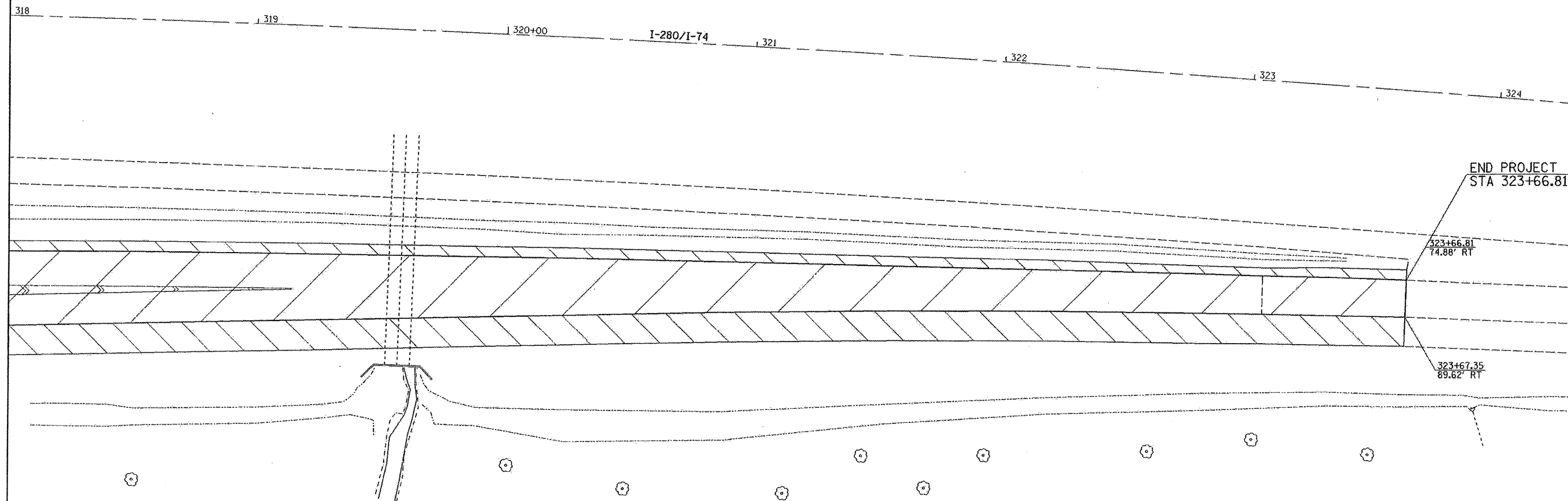


FILE NAME = c:\projects\p203006\p03006sh.ts.dgn	USER NAME = dtisle.sp	DESIGNED -	REVISED -	STATE OF ILLINOIS DEPARTMENT OF TRANSPORTATION	PROPOSED IMPROVEMENTS	F.A.I. RTE. 74	SECTION 61-3WSIM-1	COUNTY ROCK ISLAND	SHEETS 9	NO. 9
	PLOT SCALE = 20.0000" / 1"	CHECKED -	REVISED -	SCALE:	SHEET NO. OF SHEETS STA. TO STA.	FED. ROAD DIST. NO.	ILLINOIS FED. AID PROJECT	CONTRACT NO. 64D94		
	PLOT DATE = Mon Feb 04 10:04:36 2008	DATE -	REVISED -							

PAVEMENT REMOVAL



EXIST. CURVE 310
 PI STA. = 325+48.73
 $\Delta = 12^\circ 40' 58''$ (RT)
 $D = 0^\circ 29' 59''$
 $R = 11,464.32'$
 $T = 1,274.07'$
 $L = 2,537.72'$
 $E = 70.58'$
 $e = \text{-----}$
 $T.R. = \text{-----}$
 $S.E. \text{ RUN} = \text{-----}$
 $P.C. \text{ STA.} = 312+74.67$
 $P.T. \text{ STA.} = 338+12.39$



FILE NAME = c:\projects\p203000\d03000shls.dgn	USER NAME = dxtleraa	DESIGNED -	REVISED -
		DRAWN -	REVISED -
		CHECKED -	REVISED -
		DATE -	REVISED -

**STATE OF ILLINOIS
 DEPARTMENT OF TRANSPORTATION**

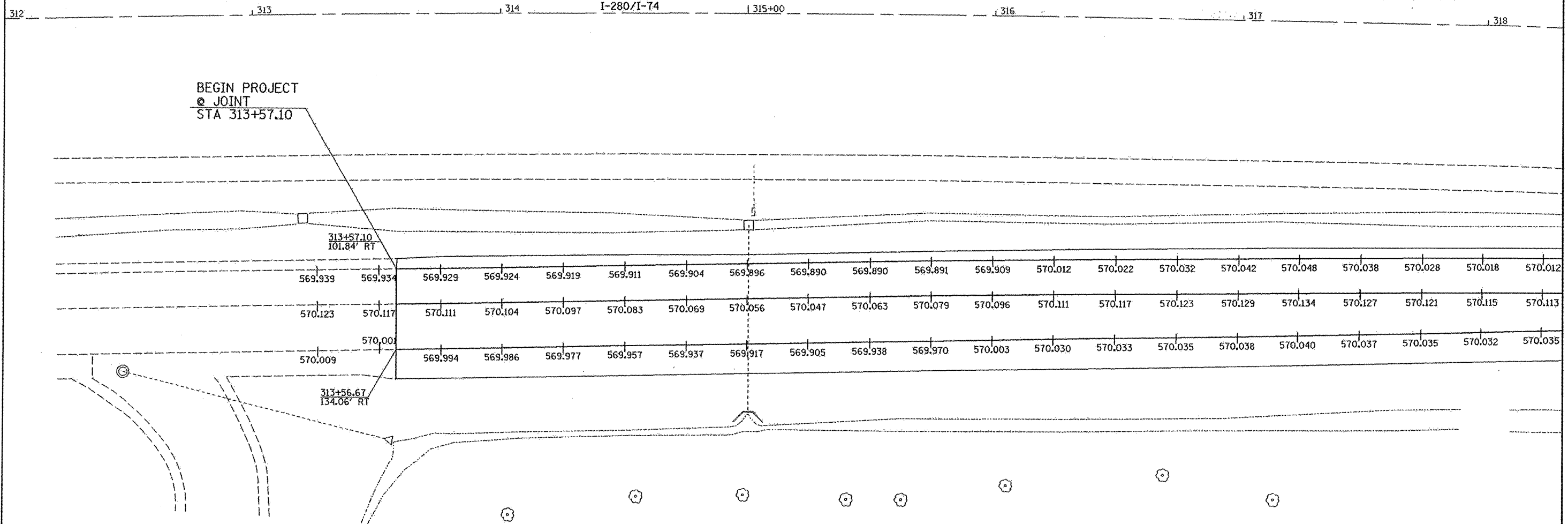
PAVEMENT REMOVAL DETAIL			
SCALE:	SHEET NO.	OF SHEETS	STA. TO STA.

F.A.I. RTE. 74	SECTION (81-3WSM-1)	COUNTY ROCK ISLAND	TOTAL SHEETS 11	SHEET NO. 11
FED. ROAD DIST. NO. ILLINOIS FED. AID PROJECT			CONTRACT NO. 64D94	

PAVEMENT ELEVATIONS

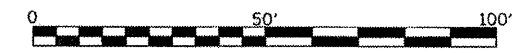


EXIST. CURVE 310
 PI STA. = 325+48.73
 $\Delta = 12^\circ 40' 58''$ (RT)
 D = $0^\circ 29' 59''$
 R = 11,464.32'
 T = 1,274.07'
 L = 2,537.72'
 E = 70.58'
 e = -----
 T.R. = -----
 S.E. RUN = -----
 P.C. STA. = 312+74.67
 P.T. STA. = 338+12.39



Station	Offset from I-74/I280 Left EOP of RAMP	LT	@ 14' Joint	Offset from I-74/I280 Right EOP of RAMP	RT	Total Pavement Width
31325		569.939	570.123		570.009	
31350		569.934	570.117		570.001	
31375		569.929	570.111		569.994	
31400	101.55	569.924	570.104	133.63	569.986	32.08
31425	101.17	569.919	570.097	133.26	569.977	32.09
31450	100.79	569.911	570.083	132.90	569.957	32.10
31475	100.41	569.904	570.069	132.53	569.937	32.12
31500	100.04	569.896	570.056	132.16	569.917	32.13
31525	99.50	569.890	570.047	131.57	569.905	32.07
31550	98.96	569.890	570.063	130.98	569.938	32.02
31575	98.41	569.891	570.079	130.38	569.970	31.97
31600	97.87	569.909	570.096	129.79	570.003	31.91
31625	97.28	570.012	570.111	129.01	570.030	31.72

Station	Offset from I-74/I280 Left EOP of RAMP	LT	@ 14' Joint	Offset from I-74/I280 Right EOP of RAMP	RT	Total Pavement Width
31650	96.69	570.022	570.117	128.22	570.033	31.53
31675	96.10	570.032	570.123	127.44	570.035	31.34
31700	95.51	570.042	570.129	126.65	570.038	31.15
31725	94.87	570.048	570.134	125.66	570.040	30.79
31750	94.24	570.038	570.127	124.67	570.037	30.43
31775	93.60	570.028	570.121	123.67	570.035	30.07
31800	92.97	570.018	570.115	122.68	570.032	29.71
31825	92.38	570.012	570.113	121.42	570.035	29.04



FILE NAME = c:\projects\p203003\d03006shs.dgn	USER NAME = ditzlerse	DESIGNED -	REVISED -
	PLDT SCALE = 20.0000 "/td> <td>DRAWN -</td> <td>REVISED -</td>	DRAWN -	REVISED -
	PLDT DATE = Mon Feb 04 10:04:36 2008	CHECKED -	REVISED -
		DATE -	REVISED -

**STATE OF ILLINOIS
 DEPARTMENT OF TRANSPORTATION**

PAVEMENT ELEVATIONS

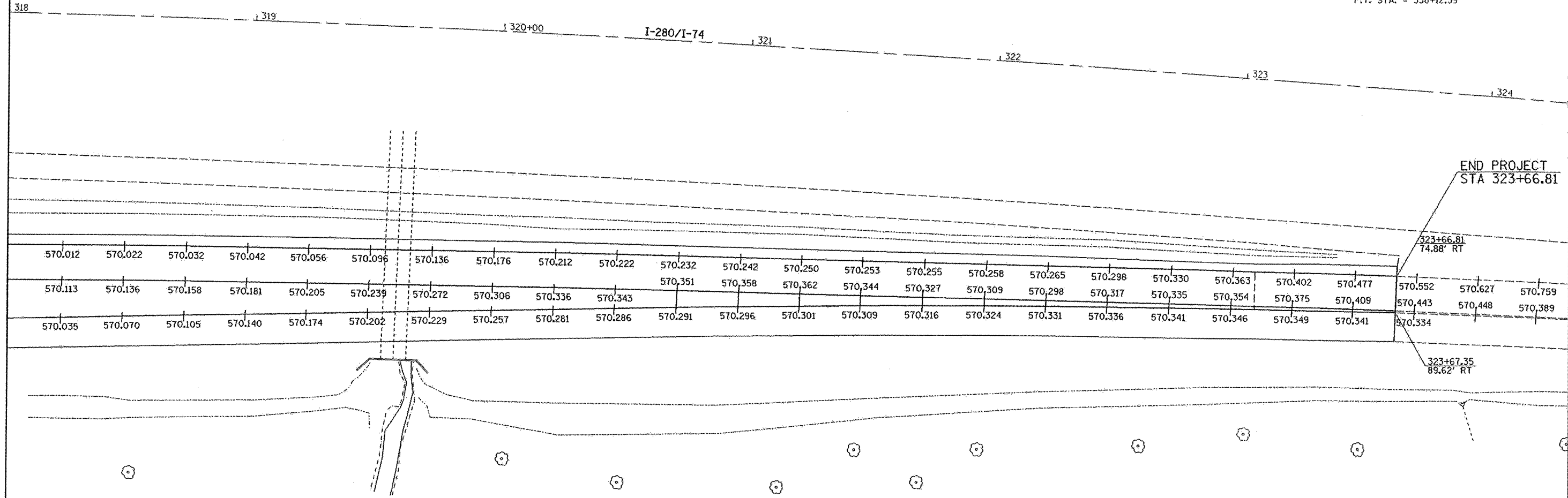
SCALE: 1" = 20'-0" SHEET NO. OF SHEETS STA. TO STA.

F.A.I. RTE.	SECTION	COUNTY	TOTAL SHEETS	SHEET NO.
74	161-3WSIM-1	ROCK ISLAND	12	12
CONTRACT NO. 64D94				
FED. ROAD DIST. NO. ILLINOIS FED. AID PROJECT				

PAVEMENT ELEVATIONS



EXIST. CURVE 310
 PI STA. = 325+48.73
 $\Delta = 12^\circ 40' 58''$ (RT)
 $D = 0^\circ 29' 59''$
 $R = 11,464.32'$
 $T = 1,274.07'$
 $L = 2,537.72'$
 $E = 70.58'$
 $\theta = \text{-----}$
 $T.R. = \text{-----}$
 $S.E. \text{ RUN} = \text{-----}$
 $P.C. \text{ STA.} = 312+74.67$
 $P.T. \text{ STA.} = 338+12.39$



Station	Offset from I-74/I280 Left EOP of RAMP	LT	14' Joint	Offset from I-74/I280 Right EOP of RAMP	RT	Total Pavement Width
31825	92.38	570.012	570.113	121.42	570.035	29.04
31850	91.78	570.022	570.136	120.16	570.070	28.37
31875	91.19	570.032	570.158	118.90	570.105	27.71
31900	90.60	570.042	570.181	117.64	570.140	27.04
31925	89.98	570.056	570.205	116.18	570.174	26.20
31950	89.35	570.096	570.239	114.72	570.202	25.37
31975	88.73	570.136	570.272	113.26	570.229	24.53
32000	88.10	570.176	570.306	111.80	570.257	23.70
32025	87.41	570.212	570.336	110.15	570.281	22.73
32050	86.73	570.222	570.343	108.49	570.286	21.76
32075	86.04	570.232	570.351	106.84	570.291	20.80
32100	85.35	570.242	570.358	105.18	570.296	19.83
32125	84.50	570.250	570.362	103.59	570.301	19.09

Station	Offset from I-74/I280 Left EOP of RAMP	LT	14' Joint	Offset from I-74/I280 Right EOP of RAMP	RT	Total Pavement Width
32150	83.64	570.253	570.344	102.00	570.309	18.35
32175	82.79	570.255	570.327	100.41	570.316	17.62
32200	81.94	570.258	570.309	98.81	570.324	16.88
32225	80.89	570.265	570.298	97.40	570.331	16.51
32250	79.84	570.298	570.317	95.98	570.336	16.13
32275	78.80	570.330	570.335	94.56	570.341	15.76
32300	77.75	570.363	570.354	93.14	570.346	15.39
32325	76.76	570.402	570.375	91.94	570.349	15.19
32350	75.76	570.477	570.409	90.74	570.341	14.99
32375	74.76	570.552	570.443	89.54	570.334	14.78
32400	73.76	570.627	570.448	88.34		14.58
32425		570.759	570.389			



FILE NAME = c:\projects\p203008\vd03009shts.dgn	USER NAME = dztleraa	DESIGNED - DRAWN -	REVISED - REVISED -
		CHECKED -	REVISED -
		DATE -	REVISED -

**STATE OF ILLINOIS
 DEPARTMENT OF TRANSPORTATION**

PAVEMENT ELEVATIONS

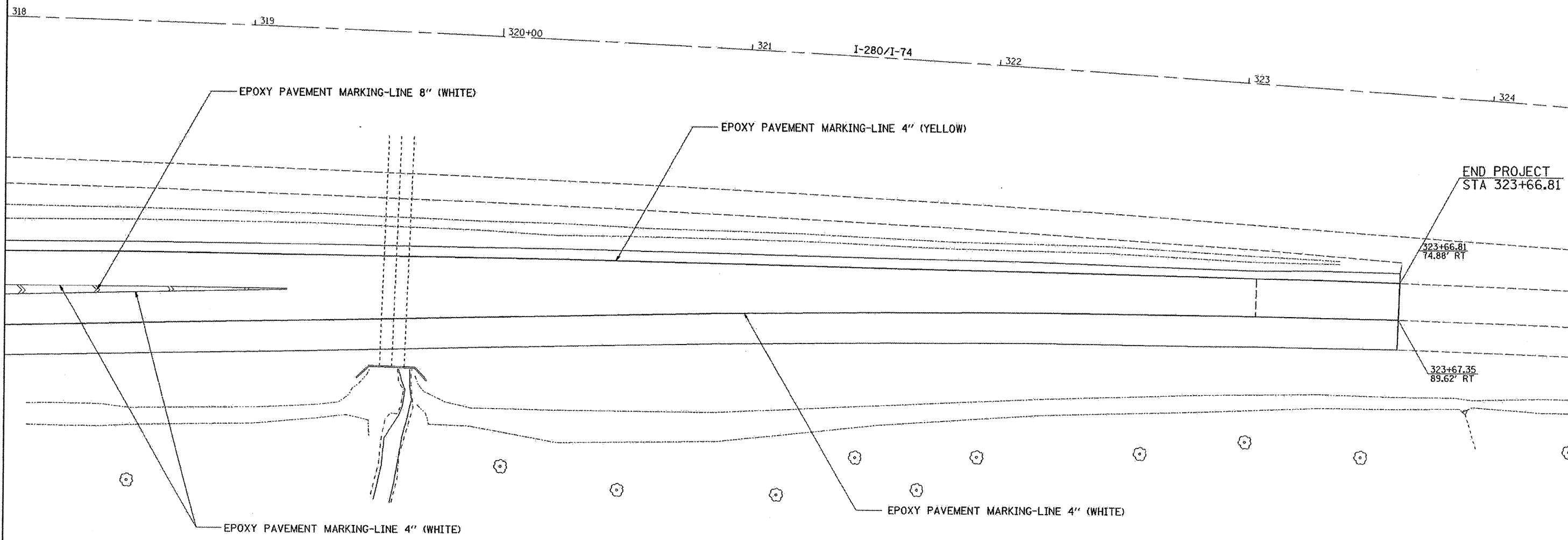
SCALE: SHEET NO. OF SHEETS STA. TO STA.

F.A.I. RTE. 74	SECTION 181-3WSIM-1	COUNTY ROCK ISLAND	TOTAL SHEETS 13	SHEET NO. 13
CONTRACT NO. 64D94			FED. ROAD DIST. NO. ILLINOIS FED. AID PROJECT	

PAVEMENT MARKINGS



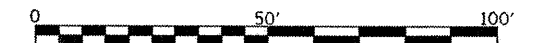
EXIST. CURVE 310
 PI STA. = 325+48.73
 $\Delta = 12^\circ 40' 58''$ (RT)
 $D = 0^\circ 29' 59''$
 $R = 11,464.32'$
 $T = 1,274.07'$
 $L = 2,537.72'$
 $E = 70.58'$
 $e = \text{-----}$
 $T.R. = \text{-----}$
 $S.E. \text{ RUN} = \text{-----}$
 $P.C. \text{ STA.} = 312+74.67$
 $P.T. \text{ STA.} = 338+12.39$



END PROJECT
 STA 323+66.81

323+66.81
 74.88' RT

323+67.35
 89.62' RT



FILE NAME = c:\projects\p203003\003008shs.dgn	USER NAME = dxtclere	DESIGNED -	REVISED -
		DRAWN -	REVISED -
	PLOT SCALE = 20,0000' / IN.	CHECKED -	REVISED -
	PLOT DATE = Mon Feb 04 10:04:35 2008	DATE -	REVISED -

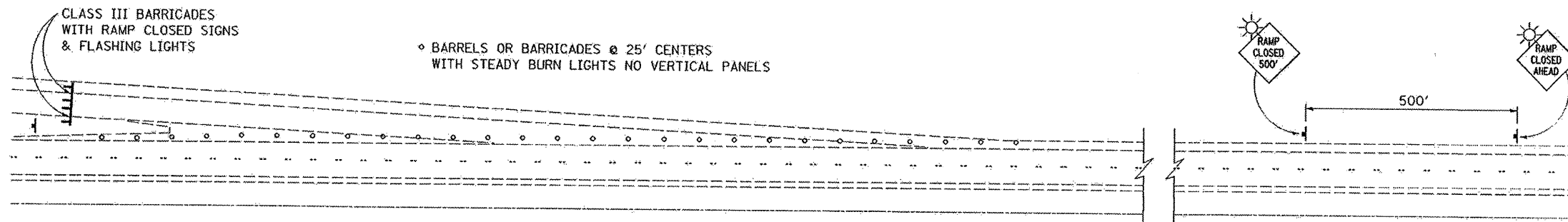
**STATE OF ILLINOIS
 DEPARTMENT OF TRANSPORTATION**

PAVEMENT MARKINGS	
SCALE:	SHEET NO. OF SHEETS STA. TO STA.

F.A.J. RTE. 74	SECTION (01-3WSM-1)	COUNTY ROCK ISLAND	TOTAL SHEETS 15	SHEET NO. 15
FED. ROAD DIST. NO.		ILLINOIS FED. AID PROJECT		

CONTRACT NO. 64094

F.A.I. RTE.	SECTION	COUNTY	TOTAL SHEETS	SHEET NO.
74	(81-3WSM-1	ROCK ISLAND	--	16



◦ BARRELS OR BARRICADES @ 25' CENTERS WITH STEADY BURN LIGHTS NO VERTICAL PANELS

GENERAL NOTES:

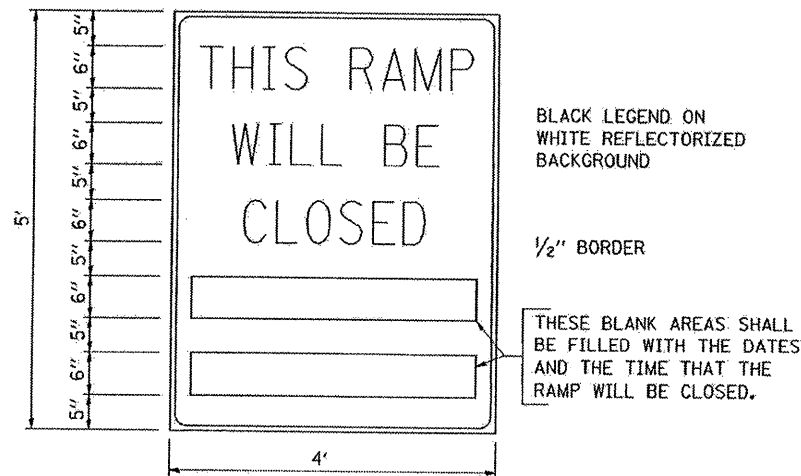
THE FOLLOWING SIGNS WILL NOT BE NEEDED AS PART OF THIS SET-UP OF TRAFFIC CONTROL AND PROTECTION (SPECIAL):

- 1 - WORK ZONE SPEED LIMIT SIGNS
- 2 - CONSTRUCTION SPEED LIMIT SIGNS
- 3 - END WORK ZONE SPEED LIMIT SIGNS

CONTACT THE DISTRICT TRAFFIC OPERATIONS ENGINEER AT 815-284-5474, ONE WEEK PRIOR TO CLOSING THE RAMP.

CONTACT OPERATIONS LIEUTENANT, DARIN JOHNSON, AT 309-752-4915, TWO WEEKS PRIOR TO CLOSING THE RAMP.

TYPICAL APPLICATION OF TRAFFIC CONTROL DEVICES FOR ROAD CLOSURE FOR WEIGH STATION ENTRANCE RAMP



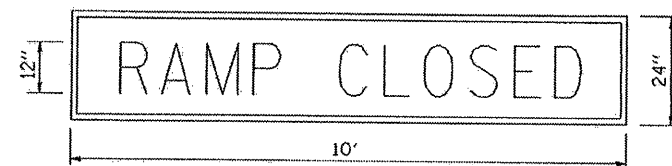
BLACK LEGEND ON WHITE REFLECTORIZED BACKGROUND

1/2" BORDER

THESE BLANK AREAS SHALL BE FILLED WITH THE DATES AND THE TIME THAT THE RAMP WILL BE CLOSED.

THESE SIGNS ARE REQUIRED ON BOTH SIDES OF THE RAMP, A MINIMUM OF 1 WEEK IN ADVANCE OF THE CLOSURE.

RAMP CLOSURE ADVANCE INFORMATION SIGN



BLACK LEGEND ON ORANGE REFLECTORIZED BACKGROUND

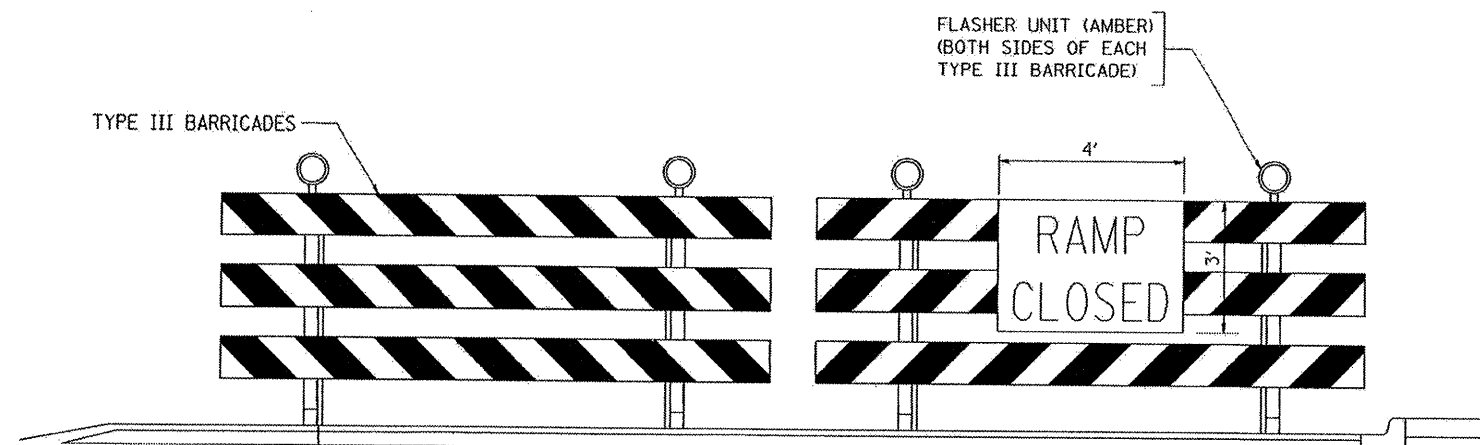
1" BORDER

THESE SIGNS ARE REQUIRED ON ALL THE EXIT GUIDE SIGNS FOR THE CLOSED EXIT RAMPS AT A DIAGONAL.

RAMP CLOSURE ADVANCE WARNING SIGN

GENERAL NOTES:

1. CONES MAY BE SUBSTITUTED FOR DRUMS OR TYPE II BARRICADES DURING DAY OPERATIONS. CONES SHALL BE A MINIMUM OF 28 INCHES HIGH.
2. STEADY BURN LIGHTS WILL NOT BE REQUIRED FOR DAY OPERATIONS.
3. A FLAGGER SHALL BE POSITIONED AT EACH CLOSED RAMP THAT IS OPEN TO CONSTRUCTION VEHICLES.
4. ALL ROUTE MARKERS AND TRAILBLAZER ASSEMBLIES WHICH DIRECT MOTORISTS TO A CLOSED ENTRANCE RAMP SHALL BE COVERED.
5. THE SIGNING AND BARRICADING WHICH IS REQUIRED BY THIS DETAIL SHALL BE CONSIDERED INCLUDED IN THE CONTRACT AND NO COMPENSATION SHALL BE ALLOWED.
6. THE RAMP CLOSURE ADVANCE INFORMATION SIGNS SHALL BE ERECTED IF THE CLOSURE TIME EXCEEDS TWENTY FOUR (24) HOURS.
7. ADDITIONAL ADVANCE WARNING SIGNS ON EXIT GUIDE SIGNING WILL BE REQUIRED FOR EXIT RAMP CLOSURES THAT EXCEED TWENTY FOUR (24) HOURS IN LENGTH.



DETAIL FOR REQUIRED BARRICADES & SIGNS

PLOT DATE = Wed Feb 27 14:04:21 2008
 PLOT SCALE = 1/8"=1'-0"
 USER NAME = cadd

ILLINOIS DEPARTMENT OF TRANSPORTATION
WEIGH STATION
RAMP CLOSURE DETAIL
 F.A.I. 74/280 (I-74/I-280)
 SECTION (81-3WSM-1)
 ROCK ISLAND COUNTY
 SCALE: NOT TO SCALE
 DATE: 11-28-06
 DRAWN BY: CADD
 CHECKED BY: