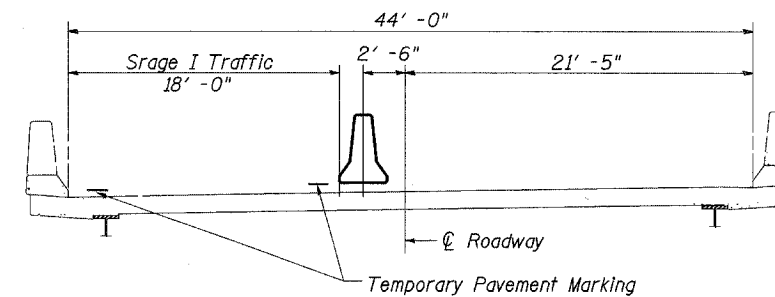


Traffic Control Plan

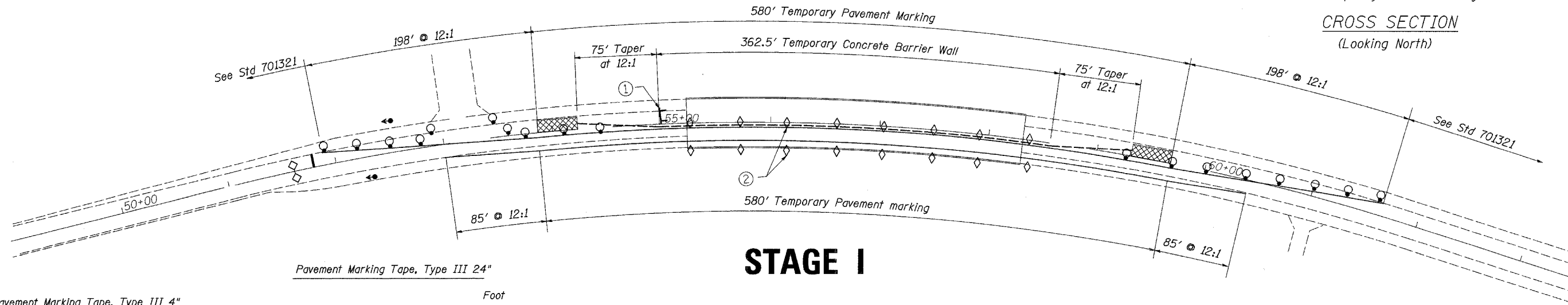
Location 1

Structure Number 008-0028

Refer to Standard 701321 for additional details



CROSS SECTION
(Looking North)

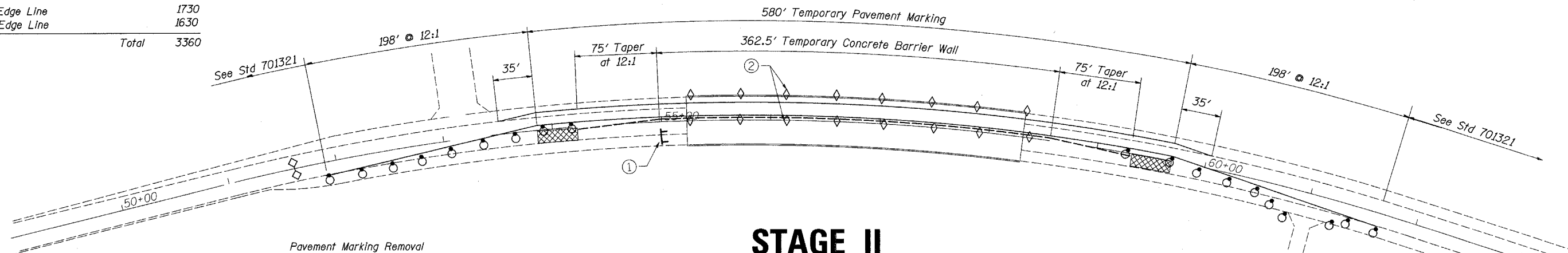


STAGE I

Pavement Marking Tape, Type III 4"

Stage I Edge Line	Foot	1730
Stage II Edge Line	Foot	1630
Total	Foot	3360

Pavement Marking Tape, Type III 24"	Foot	24
Stop Bars	Foot	24
Total	Foot	24



STAGE II

Temporary Concrete Barrier

Stage I	Foot	512.5
Total	Foot	512.5

Relocate Temporary Concrete Barrier

Stage II	Foot	512.5
Temporary Storage	Foot	512.5
Total	Foot	1025

Stage I	Sq. Ft.	750
Total	Sq. Ft.	750

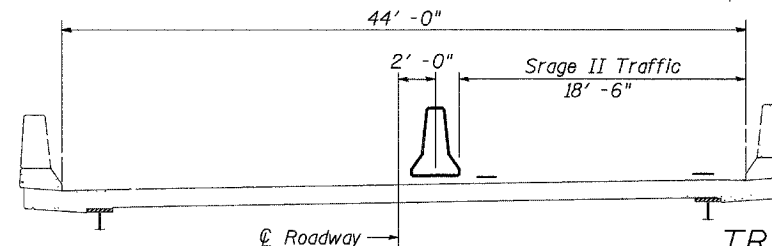
Stage I	Temporary Lines	Sq. Ft.	575
Stage II		Sq. Ft.	550
Total		Sq. Ft.	1125

Temporary Centerline Skip Dash and Solid Yellow	Foot	240
	Foot	720
Total	Foot	960

Paint Pavement Marking - Line 4"

Stp Bar to Stop Bar	Foot	1600
Edge Lines Centerline	Foot	1100
Total	Foot	2700

- ① Type III barricade to be placed when no work is being performed.
- ② Barrier wall/guardrail markers at 7.6 m (25') cts. See Standards 704001 & 635011.



CROSS SECTION
(Looking North)

TRAFFIC CONTROL PLAN
IL 84 OVER PLUM CREEK
VARIOUS ROUTES
SECTION (106BR)M, (4B-2)M & (177-4B-3)M
VARIOUS COUNTIES
STRUCTURE NUMBER 008-0028

* Various
** (106BR)M, (4B-2)M & 177-4B-3)M

FILE NAME =	USER NAME = linkdj	DESIGNED -	REVISED -
D:\BRYCADD\plans\Various Counties\Contract #64099 2008 expansion joints\0080028.dgn		DRAWN -	REVISED -
PLOT SCALE = 50.0000' / IN.		CHECKED -	REVISED -
PLOT DATE = Sat Mar 15 11:31:19 2008		DATE -	REVISED -

STATE OF ILLINOIS
DEPARTMENT OF TRANSPORTATION

Traffic Control Plan

SCALE: SHEET NO. OF SHEETS STA. TO STA.

F.A. RTE.	SECTION	COUNTY	TOTAL SHEETS	SHEET NO.
*	**	Various	26	4
ILLINOIS CONTRACT NO. 64099				
FED. ROAD DIST. NO. ILLINOIS FED. AID PROJECT				