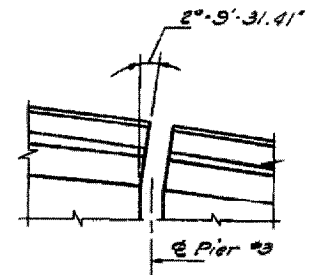
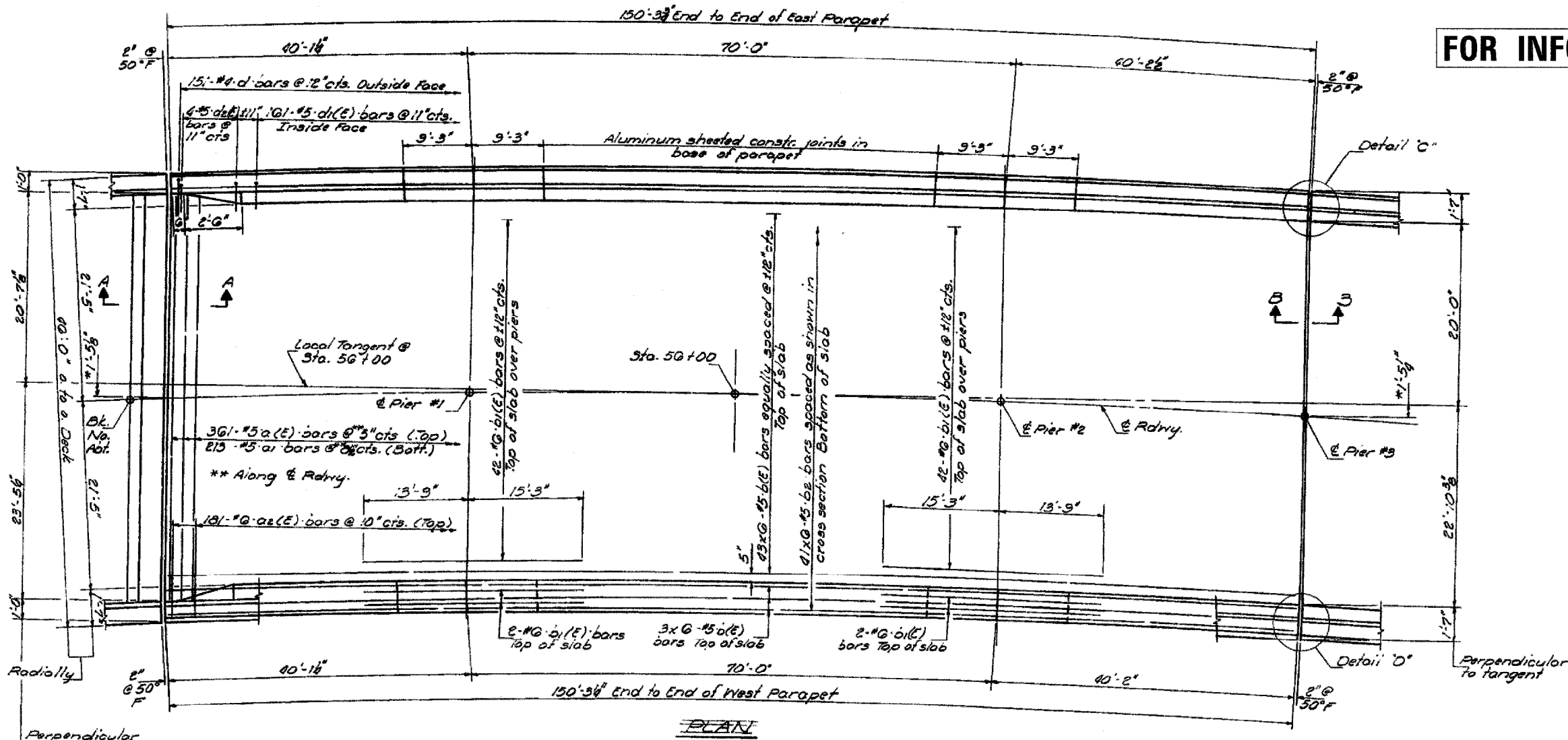


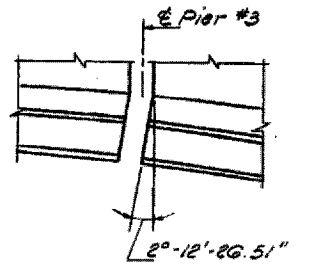
\* At end of slab

MINI BAR LAPS  
#5 bars = 1'-9"

FOR INFORMATION ONLY



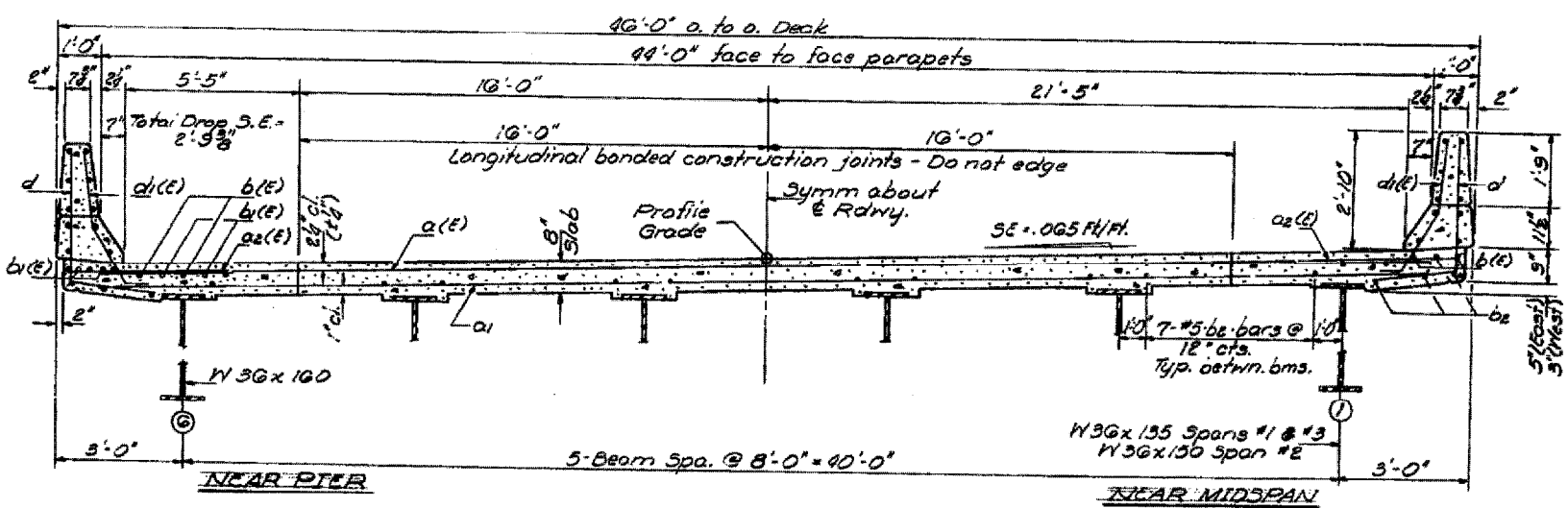
DETAIL C



DETAIL D

NOTES:

Reinforcement bars designated (E) shall be epoxy coated. See Special Provisions.  
Bars indicated thus 20x3-#5 etc. indicates 20 lines of bars with 3 lengths per line.



CROSS SECTION (Looking North)

DECK PLAN & CROSS SECTION  
SPANS 1-3  
IL 84 OVER PLUM RIVER  
FA ROUTE 18 (IL 84)  
SECTION 106BR  
CARROLL COUNTY  
STRUCTURE NUMBER 008-0028

\* Various  
\*\* (106BR)M, (4B-2)M & 177-4B-3)M

FILE NAME =	USER NAME = lmkdj	DESIGNED -	REVISED -	<b>STATE OF ILLINOIS DEPARTMENT OF TRANSPORTATION</b>	<b>Existing Deck Plan &amp; Cross-Section (Spans 1-3)</b>		F.A. RTE.	SECTION	COUNTY	TOTAL SHEETS	SHEET NO.
0:\BR\CADD plans\Various Counties\Contract #64D99 2008 expansion joints\0080028.dgn		DRAWN -	REVISED -						Various	26	11
PLOT SCALE = 50.0000' / IN.		CHECKED -	REVISED -				SCALE: None		ILLINOIS	CONTRACT NO. 64D99	
PLOT DATE = Sat Mar 15 11:25:58 2008		DATE -	REVISED -				SHEET NO. 2 OF 7 SHEETS		FED. ROAD DIST. NO.	ILLINOIS FED. AID PROJECT	