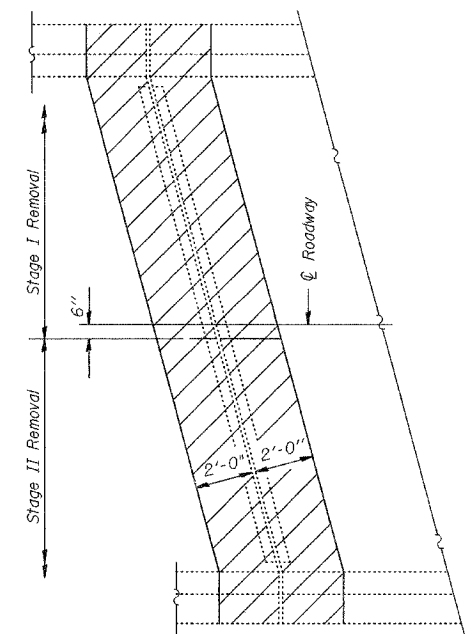
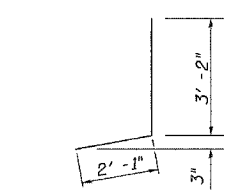


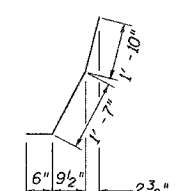
EXISTING PARTIAL PLAN
(At Abutments)



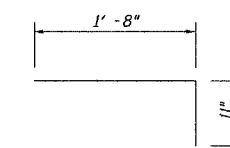
EXISTING PARTIAL PLAN
(At Pier 3)



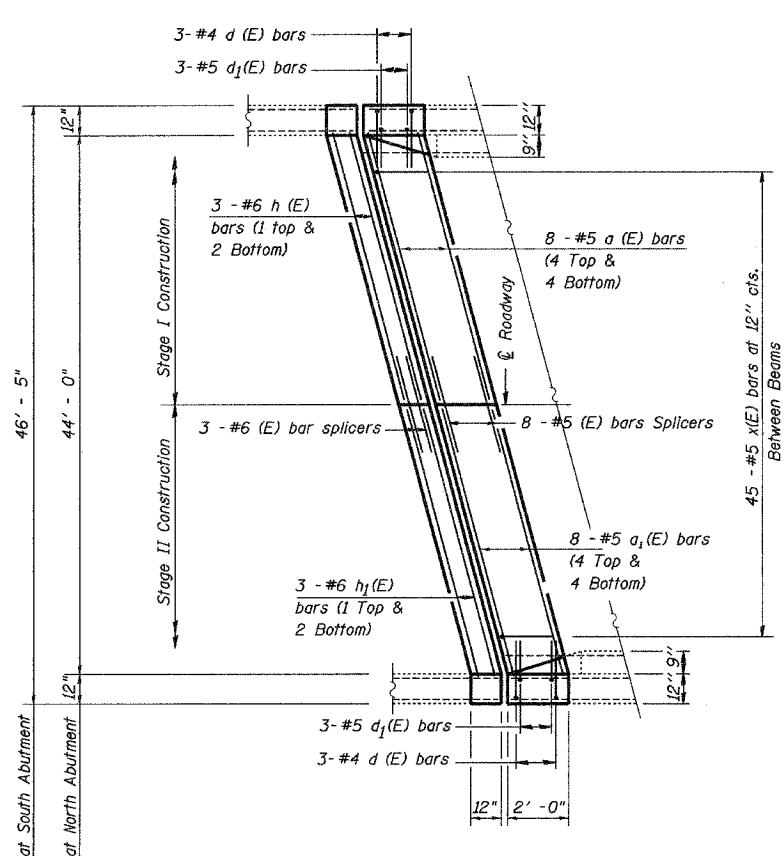
#4 d (E) BAR



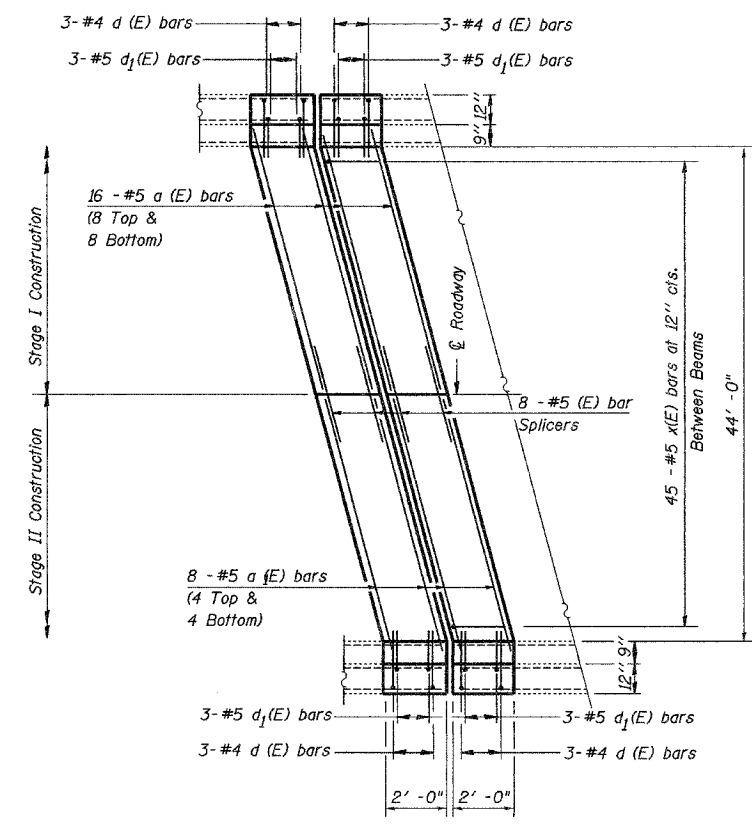
#5 d₁ (E) BAR



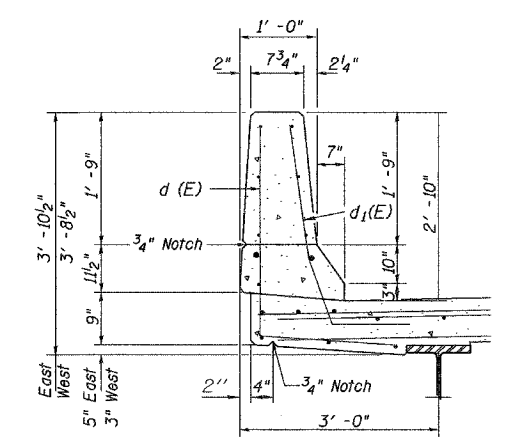
#5 x (E) BAR



PROPOSED PARTIAL PLAN
(At Abutment)



PROPOSED PARTIAL PLAN
(At Pier 3)



TYPICAL SECTION THRU PARAPET

JOINT DETAILS
IL 84 OVER PLUM RIVER
FA ROUTE 18 (IL 84)
SECTION 106BR
CARROLL COUNTY
STRUCTURE NUMBER 008-0028

* Various
** (106BR)M, (4B-2)M & 177-4B-3)M

FILE NAME = #FILEL*	USER NAME = #USER*	DESIGNED -	REVISED -	STATE OF ILLINOIS DEPARTMENT OF TRANSPORTATION	Joint Details		F.A. RTE.	SECTION	COUNTY	TOTAL SHEETS	SHEET NO.		
		DRAWN -	REVISED -		SCALE: None	SHEET NO. 4 OF 7 SHEETS	STA.	TO STA.	*	**	Various	26	13
		PLOT SCALE = #SCALE*	CHECKED -						ILLINOIS	CONTRACT NO.	64D99		
		PLOT DATE = #DATE*	DATE -						FED. ROAD DIST. NO.	ILLINOIS FED. AID PROJECT			