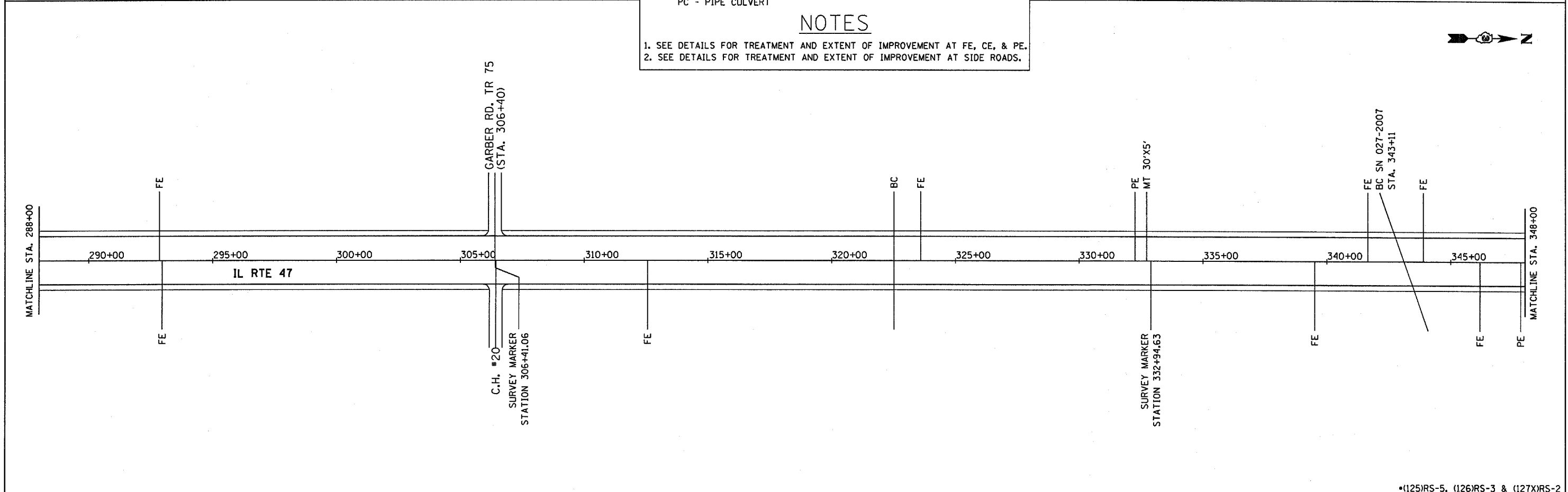


**KEY**

CE - COMMERCIAL ENTRANCE	FE - FIELD ENTRANCE
PE - PRIVATE ENTRANCE	BC - BOX CULVERT
MT - MAILBOX TURNOUT	RR - RAILROAD
PC - PIPE CULVERT	

**NOTES**

1. SEE DETAILS FOR TREATMENT AND EXTENT OF IMPROVEMENT AT FE, CE, & PE.
2. SEE DETAILS FOR TREATMENT AND EXTENT OF IMPROVEMENT AT SIDE ROADS.



FILE NAME =	USER NAME = duncenbd	DESIGNED -	REVISED - DIST. 3 COMMENT	<b>STATE OF ILLINOIS DEPARTMENT OF TRANSPORTATION</b>	<b>PROJECT LAYOUT</b>	F.A.P. RTE.	SECTION	COUNTY	TOTAL SHEETS	SHEET NO.	
ca:\projects\ed02484\consult\cadd drawings\shtrdy01.dgn		DRAWN - MAP	REVISED - 5/27/04			326	*	FORD	22	10	
PLOT SCALE = 200.0004' / IN.		CHECKED - RRM	REVISED - BDD 01/28/08			CONTRACT NO. 66423					
PLOT DATE = Mar 11, 2008 - 09:27:43 AM		DATE - 02/26/04	REVISED -			FED. ROAD DIST. NO. ILLINOIS FED. AID PROJECT					

•(125)RS-5, (126)RS-3 & (127)RS-2

SCALE: N.T.S. SHEET NO. 2 OF 5 SHEETS STA. 228+00 TO STA. 348+00