

F.A.P. RTE.	SECTION	COUNTY	TOTAL SHEETS	SHEET NO.
607	(129,130)RS-3	KENDALL	9	1
FED. ROAD DIST. NO.	ILLINOIS	CONTRACT NO. 66474		

**INDEX OF SHEETS**

- 1 COVER SHEET
- 2 GENERAL NOTES
- 3 SUMMARY OF QUANTITIES
- 4 TYPICAL SECTION
- 5 SCHEDULE OF QUANTITIES
- 6 TIE POINTS
- 7 PROJECT LAYOUT
- 8 - 9 DETAILS

**STANDARDS**

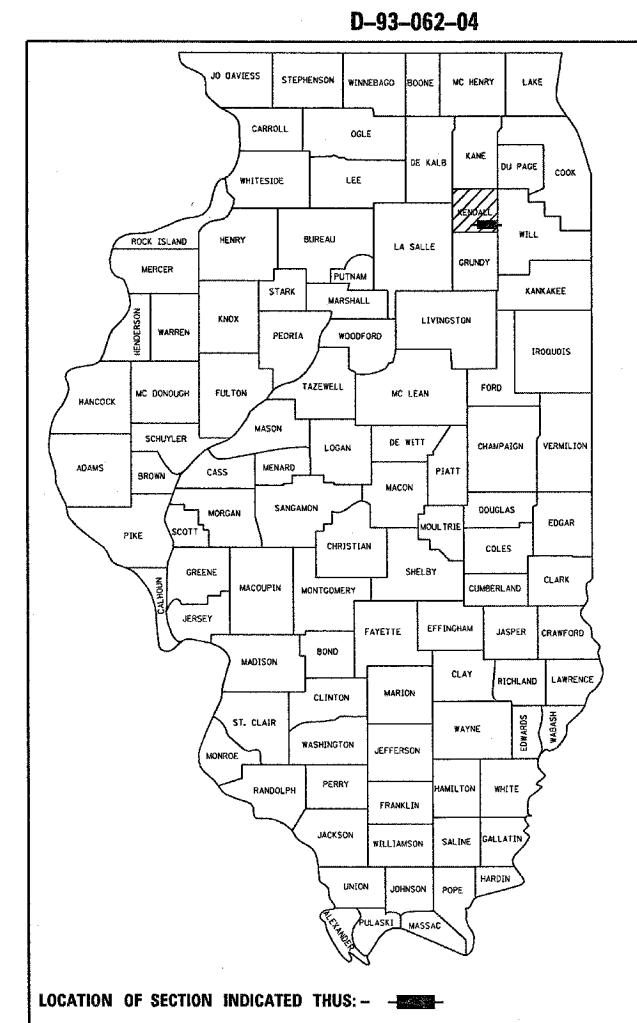
- 000001-05 STANDARD SYMBOLS, ABBREVIATIONS AND PATTERNS
- 442201-03 CLASS C AND D PATCHES
- 667101 PERMANENT SURVEY MARKERS
- 701001-01 OFF-ROAD OPERATIONS 2L, 2W, MORE THAN 4.5 m (15') AWAY
- 701006-02 OFF-ROAD OPERATIONS 2L, 2W, 4.5 m (15') TO 600 mm (24") FROM PAVEMENT EDGE
- 701011-01 OFF-ROAD MOVING OPERATIONS 2L, 2W, DAY ONLY
- 701301-02 LANE CLOSURE, 2L, 2W, SHORT TIME OPERATIONS
- 701306-01 LANE CLOSURE, 2L, 2W, SLOW MOVING OPERATIONS DAY ONLY, FOR SPEEDS ≥ 45 MPH
- 701311-02 LANE CLOSURE, 2L, 2W, MOVING OPERATIONS - DAY ONLY
- 701326-02 LANE CLOSURE, 2L, 2W, PAVEMENT WIDENING, FOR SPEEDS ≥ 45 MPH
- 701336-04 LANE CLOSURE, 2L, 2W, WORK AREAS IN SERIES, FOR SPEEDS ≥ 45 MPH
- 701901 TRAFFIC CONTROL DEVICES
- 781001-02 TYPICAL APPLICATIONS RAISED REFLECTIVE PAVEMENT MARKERS

**STATE OF ILLINOIS**  
**DEPARTMENT OF TRANSPORTATION**  
**DIVISION OF HIGHWAYS**  
**PROPOSED**  
**HIGHWAY PLANS**

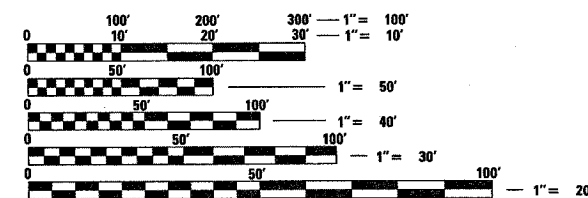
**FAP ROUTE 607 (US 52)**  
**SECTION (129,130)RS-3**  
**PROJECT F-0607(075)**  
**KENDALL COUNTY**

C-93-118-04

**IL 47 TO WILL COUNTY LINE**  
**3P MILLING & RESURFACING**



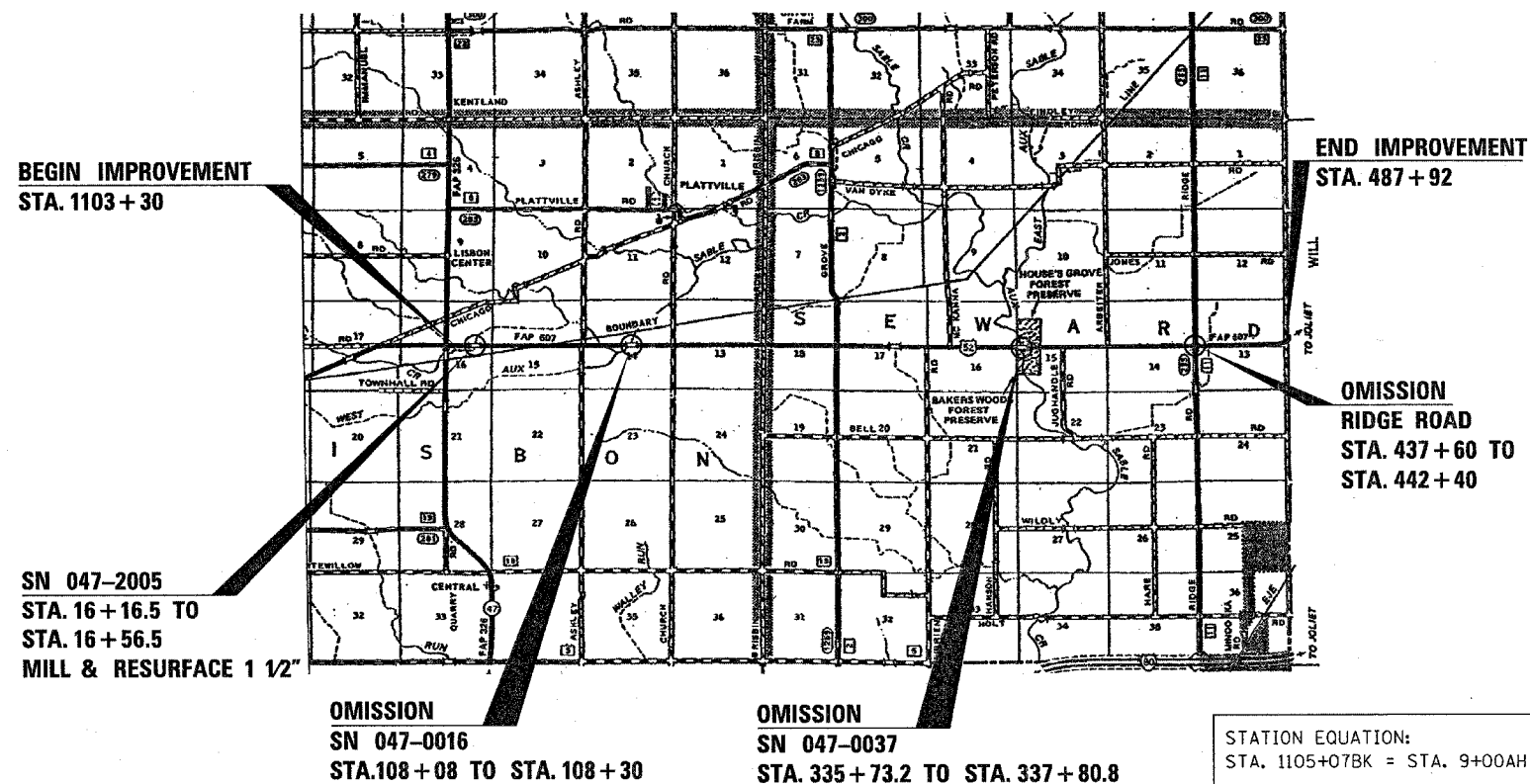
LOCATION OF SECTION INDICATED THUS: **RURAL MINOR ARTERIAL**  
**2005 ADT = 4600 TRUCKS = 18.0%**



FULL SIZE PLANS HAVE BEEN PREPARED USING STANDARD ENGINEERING SCALES. REDUCED SIZED PLANS WILL NOT CONFORM TO STANDARD SCALES. IN MAKING MEASUREMENTS ON REDUCED PLANS, THE ABOVE SCALES MAY BE USED.

J.U.L.I.E.  
 JOINT UTILITY LOCATION INFORMATION FOR EXCAVATION  
 1-800-892-0123  
 OR 811

**PROJECT ENGINEER : DAVE BROVIAK**  
**UNIT CHIEF : BRAD DUNCAN**  
**TOWNSHIP(S): LISBON, SEWARD**  
**DISTRICT 3 NO. (815) 434-6131**  
**CONTRACT NO. 66474**



STATION EQUATION:  
 STA. 1105+07BK = STA. 9+00AH

GROSS LENGTH = 48129 FT = 9.12 MILES  
 NET LENGTH = 47419.4 FT = 8.98 MILES

NO REVIEW

STATE OF ILLINOIS  
 DEPARTMENT OF TRANSPORTATION  
 DIVISION OF HIGHWAYS

SUBMITTED March 19 20 08

George Ryan  
 DEPUTY DIRECTOR OF HIGHWAYS, REGION ENGINEER

May 9, 20 08  
Eric E. Barakat  
 ENGINEER OF DESIGN AND ENVIRONMENT

May 9, 20 08  
Christina M. Reed  
 DIRECTOR OF HIGHWAYS, CHIEF ENGINEER

**PRINTED BY THE AUTHORITY**  
**OF THE STATE OF ILLINOIS**