

F.A.P. RTE.	SECTION	COUNTY	TOTAL SHEETS	SHEET NO.
607	(129,130)RS-3	KENDALL	9	1
FED. ROAD DIST. NO.	ILLINOIS	CONTRACT NO. 66474		

INDEX OF SHEETS

- 1 COVER SHEET
- 2 GENERAL NOTES
- 3 SUMMARY OF QUANTITIES
- 4 TYPICAL SECTION
- 5 SCHEDULE OF QUANTITIES
- 6 TIE POINTS
- 7 PROJECT LAYOUT
- 8 - 9 DETAILS

STANDARDS

- 000001-05 STANDARD SYMBOLS, ABBREVIATIONS AND PATTERNS
- 442201-03 CLASS C AND D PATCHES
- 667101 PERMANENT SURVEY MARKERS
- 701001-01 OFF-ROAD OPERATIONS 2L, 2W, MORE THAN 4.5 m (15') AWAY
- 701006-02 OFF-ROAD OPERATIONS 2L, 2W, 4.5 m (15') TO 600 mm (24") FROM PAVEMENT EDGE
- 701011-01 OFF-ROAD MOVING OPERATIONS 2L, 2W, DAY ONLY
- 701301-02 LANE CLOSURE, 2L, 2W, SHORT TIME OPERATIONS
- 701306-01 LANE CLOSURE, 2L, 2W, SLOW MOVING OPERATIONS DAY ONLY, FOR SPEEDS ≥ 45 MPH
- 701311-02 LANE CLOSURE, 2L, 2W, MOVING OPERATIONS - DAY ONLY
- 701326-02 LANE CLOSURE, 2L, 2W, PAVEMENT WIDENING, FOR SPEEDS ≥ 45 MPH
- 701336-04 LANE CLOSURE, 2L, 2W, WORK AREAS IN SERIES, FOR SPEEDS ≥ 45 MPH
- 701901 TRAFFIC CONTROL DEVICES
- 781001-02 TYPICAL APPLICATIONS RAISED REFLECTIVE PAVEMENT MARKERS

STATE OF ILLINOIS
DEPARTMENT OF TRANSPORTATION
DIVISION OF HIGHWAYS
PROPOSED
HIGHWAY PLANS

FAP ROUTE 607 (US 52)
SECTION (129,130)RS-3
PROJECT F-0607(075)
KENDALL COUNTY

C-93-118-04

IL 47 TO WILL COUNTY LINE
3P MILLING & RESURFACING



RURAL MINOR ARTERIAL
2005 ADT = 4600 TRUCKS = 18.0%

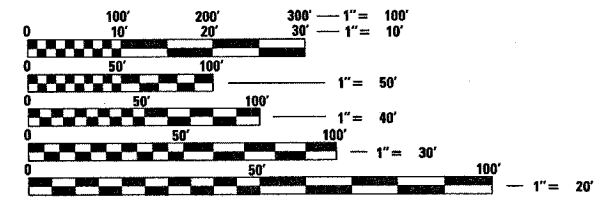
STATE OF ILLINOIS
DEPARTMENT OF TRANSPORTATION
DIVISION OF HIGHWAYS

SUBMITTED March 19 20 08

George Ryan
DEPUTY DIRECTOR OF HIGHWAYS, REGION ENGINEER

May 9, 20 08
Eric E. Barakat
ENGINEER OF DESIGN AND ENVIRONMENT

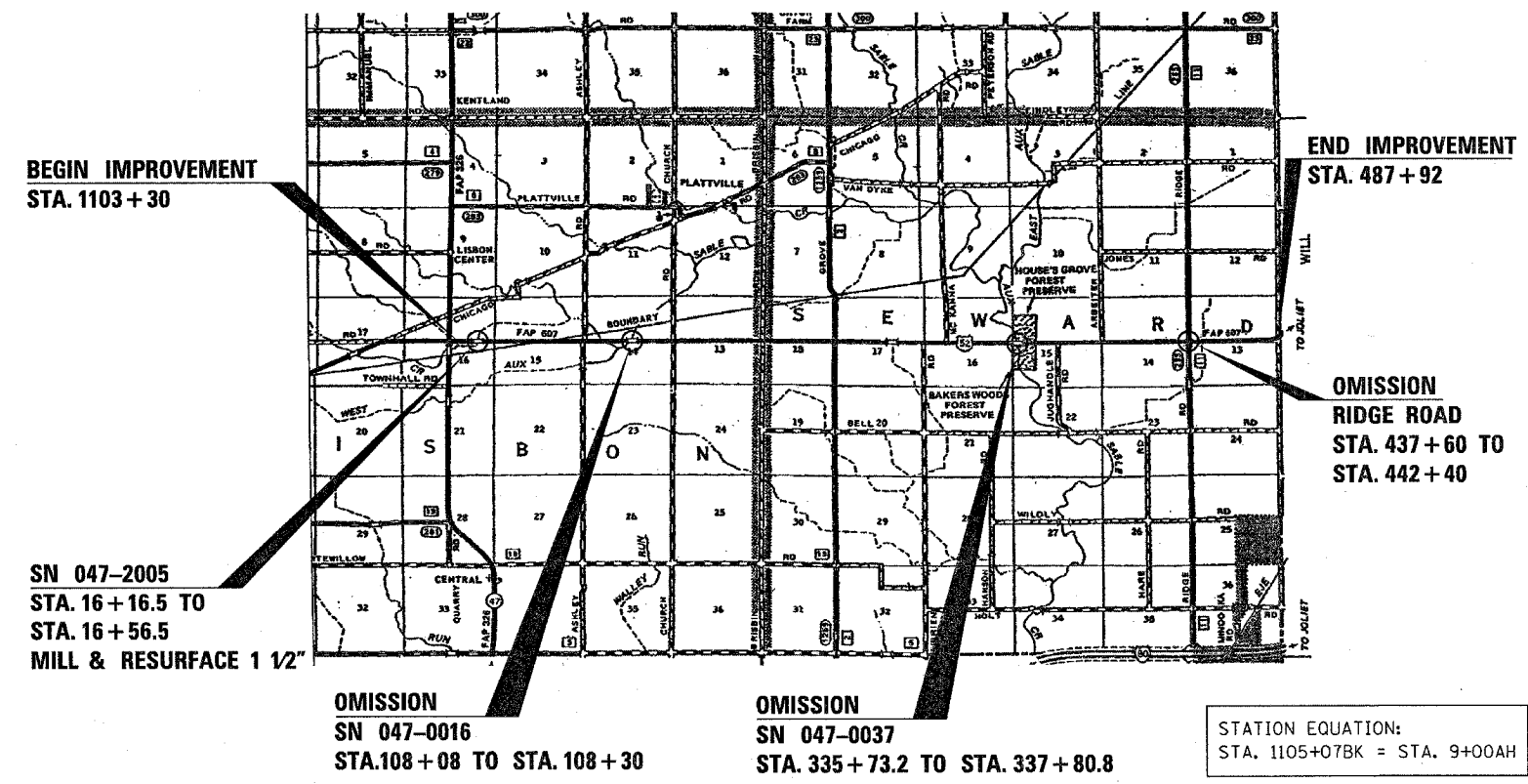
May 9, 20 08
Christina M. Reed
DIRECTOR OF HIGHWAYS, CHIEF ENGINEER



FULL SIZE PLANS HAVE BEEN PREPARED USING STANDARD ENGINEERING SCALES. REDUCED SIZED PLANS WILL NOT CONFORM TO STANDARD SCALES. IN MAKING MEASUREMENTS ON REDUCED PLANS, THE ABOVE SCALES MAY BE USED.

J.U.L.I.E.
JOINT UTILITY LOCATION INFORMATION FOR EXCAVATION
1-800-892-0123
OR 811

PROJECT ENGINEER : DAVE BROVIAK
UNIT CHIEF : BRAD DUNCAN
TOWNSHIP(S): LISBON, SEWARD
DISTRICT 3 NO. (815) 434-6131
CONTRACT NO. 66474



STATION EQUATION:
STA. 1105+07BK = STA. 9+00AH

GROSS LENGTH = 48129 FT = 9.12 MILES
NET LENGTH = 47419.4 FT = 8.98 MILES

NO REVIEW

PRINTED BY THE AUTHORITY
OF THE STATE OF ILLINOIS

GENERAL NOTES

THE THICKNESS OF HMA SHOWN ON THE PLANS IS THE NOMINAL THICKNESS. DEVIATIONS FROM THE NOMINAL THICKNESS WILL BE PERMITTED WHEN SUCH DEVIATIONS OCCUR DUE TO IRREGULARITIES IN THE EXISTING SURFACE OR BASE ON WHICH THE HMA IS PLACED.

THE HMA SURFACE OF ALL MAILBOX TURNOUTS, PRIVATE ENTRANCES, COMMERCIAL ENTRANCES, AND SIDE ROADS SHALL BE MADE NEATLY, IN A WORKMANLIKE MANNER, AND SHALL ACCURATELY CONFORM TO THE SHAPES AND DIMENSIONS SHOWN ON THE PLAN DETAILS. IF REQUIRED BY THE ENGINEER, THE CONTRACTOR SHALL BE REQUIRED TO SAW CUT THE HMA SURFACE TO CONFORM TO THE SHAPES AND DIMENSIONS SHOWN ON THE PLAN DETAILS. THIS WORK SHALL BE INCLUDED IN THE COST OF THE HMA SURFACE

SEEDING SHALL NOT BE PERMITTED AT ANY TIME WHEN THE GROUND IS FROZEN, WET, OR IN AN UNTILLABLE CONDITION. LOCATIONS TO BE SEEDED WILL BE DETERMINED BY THE ENGINEER

THE ENGINEER WILL BE THE SOLE JUDGE CONCERNING CURING TIME FOR THE VARIOUS HMA LIFTS.

ON EXISTING PAVEMENT WHICH MAY BE SUPERELEVATED, THE NEW HMA PAVEMENT SHALL BE BUILT WITH THE SAME SUPERELEVATION UNLESS NEW SUPERELEVATION RATES ARE GIVEN ON THE PLANS.

ANY REFERENCE TO A STANDARD IN THESE PLANS SHALL BE INTERPRETED TO MEAN THE EDITION AS INDICATED BY THE SUBNUMBER SHOWN IN THE LIST OF STANDARDS OR THE COPY INCLUDED IN THESE PLANS.

THE FOLLOWING RATES OF APPLICATION HAVE BEEN USED IN CALCULATING PLAN QUANTITIES:

GRANULAR MATERIALS	2.05	TONS / CU YD
BITUMINOUS MAT PRIME COAT	0.08	GAL / SQ YD OR
	0.375	GAL / SQ YD
AGGREGATE PRIME COAT	0.002	TONS / SQ YD
HMA RESURFACING	112	LBS / SQ YD / IN
SHORT TERM PAVEMENT MARKING	10	FT / 100 FT OF APPLICATION
MIX FOR CRACKS, JTS & FLGWYS	0.0003	TONS / SQ YD
LEVEL BINDER (HAND METHOD)	0.0005	TONS / SQ YD

THE CONTRACTOR SHALL CONTACT JULIE AT LEAST 48 HOURS PRIOR TO EXCAVATION TO DETERMINE WHICH UTILITIES ARE IN THE AREA.

STATE OF ILLINOIS
DEPARTMENT OF TRANSPORTATION
DISTRICT THREE

PREPARED BY: Richard Powell
DISTRICT STUDIES & PLANS ENGINEER

DATE: 3-14-08

EXAMINED BY: [Signature]
DISTRICT CONSTRUCTION ENGINEER

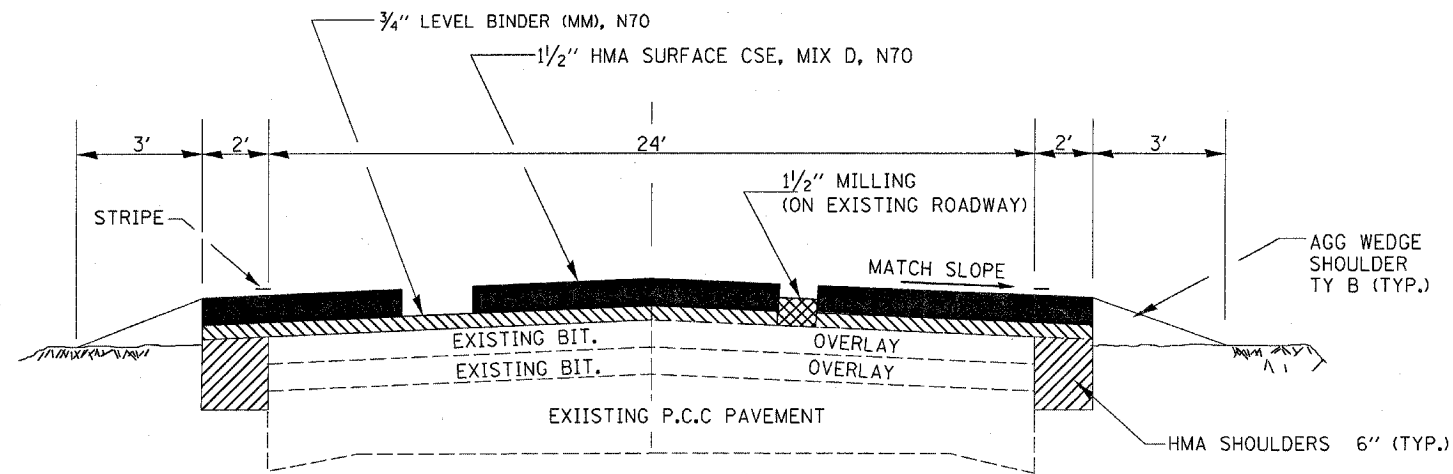
[Signature]
DISTRICT MATERIALS ENGINEER

[Signature]
DISTRICT OPERATIONS ENGINEER

FILE NAME = c:\projects\ed06204\lshls.dgn	USER NAME = duncanbd	DESIGNED -	REVISED -	STATE OF ILLINOIS DEPARTMENT OF TRANSPORTATION	GENERAL NOTES			F.A.P. RTE.	SECTION	COUNTY	TOTAL SHEETS	SHEET NO.
	PLOT SCALE = 50.000' / IN.	DRAWN -	REVISED -					607	(129,130)RS-3	KENDALL	8	2
PLOT DATE = Mar 12, 2008 - 08:41:26 AM	CHECKED -	REVISED -	REVISED -	SCALE:	SHEET NO.	OF	SHEETS	STA.	TO STA.	FED. ROAD DIST. NO. ILLINOIS FED. AID PROJECT		
	DATE -	REVISED -								CONTRACT NO. 66474		

SUMMARY OF QUANTITIES				80% FED. 20% STATE	
CODE NO.	ITEM	UNIT	TOTAL QUANTITY	CONSTRUCTION CODE TYPE:	
				I000-2A	SFTY-2A
				STRUCT 047-2005	
20200600	EXCAVATING AND GRADING EXISTING SHOULDER	UNIT	948	947.2	0.8
20400800	FURNISHED EXCAVATION	CU YD	25	25	
25100630	EROSION CONTROL BLANKET	SQ YD	275	275	
40600100	BITUMINOUS MATERIALS (PRIME COAT)	GALLON	12136	12125	11
40600300	AGGREGATE (PRIME COAT)	TON	298	297.7	0.3
40600400	MIXTURE FOR CRACKS, JOINTS, AND FLANGEWAYS	TON	38	38	
40600535	LEVELING BINDER (HAND METHOD), N70	TON	63	63	
40600635	LEVELING BINDER (MACHINE METHOD), N70	TON	6315	6315	
40600895	CONSTRUCTING TEST STRIP	EACH	1	1	
40600982	HOT-MIX ASPHALT SURFACE REMOVAL - BUTT JOINT	SQ YD	480	480	
40603340	HOT-MIX ASPHALT SURFACE COURSE, MIX "D", N70	TON	12394	12382	12
40600990	TEMPORARY RAMP	SQ YD	391	391	
40800050	INCIDENTAL HOT-MIX ASPHALT SURFACING	TON	483	483	
44000155	HOT-MIX ASPHALT SURFACE REMOVAL 1 1/2"	SQ YD	129599	129474	125
44201827	CLASS D PATCHES, TYPE II, 15 INCH	SQ YD	448	448	
48102100	AGGREGATE WEDGE SHOULDER, TYPE B	TON	3824	3820.8	3.2
48203021	HOT-MIX ASPHALT SHOULDERS, 6"	SQ YD	21075	21057.2	17.8
66700205	PERMANENT SURVEY MARKERS, TYPE 1	EACH	7	7	
67000400	ENGINEER'S FIELD OFFICE, TYPE A	CAL MO	3	3	
67100100	MOBILIZATION	L SUM	1	1	
70100460	TRAFFIC CONTROL AND PROTECTION, STANDARD 701306	L SUM	1	1	
70100500	TRAFFIC CONTROL AND PROTECTION, STANDARD 701326	L SUM	1	1	
70100600	TRAFFIC CONTROL AND PROTECTION, STANDARD 701336	L SUM	1	1	
70103815	TRAFFIC CONTROL SURVEILLANCE	CAL DA	5	5	
70300100	SHORT-TERM PAVEMENT MARKING	FOOT	14226	14226	
70300220	TEMPORARY PAVEMENT MARKING - LINE 4"	FOOT	97998	97998	
70300240	TEMPORARY PAVEMENT MARKING - LINE 6"	FOOT	11920	11920	
70301000	WORK ZONE PAVEMENT MARKING REMOVAL	SQ FT	1565	1565	
* 78001110	PAINT PAVEMENT MARKING - LINE 4"	FOOT	97988	97988	
* 78001130	PAINT PAVEMENT MARKING - LINE 6"	FOOT	11920	11920	
* 78100100	RAISED REFLECTIVE PAVEMENT MARKER	EACH	596	596	
78300200	RAISED REFLECTIVE PAVEMENT MARKER REMOVAL	EACH	596	596	
† Z0076600	TRAINEES	HOURL	1000	1000	

* SPECIALTY ITEMS
† Y080



PROPOSED TYPICAL SECTION

MIXTURES TABLE

	HMA SURFACE	HMA LEVEL BINDER	INCIDENTAL HMA SURFACE	HMA SHOULDERS ***	HMA BINDER FOR PATCHES
PG GRADE	PG 64-22	PG 64-22	PG 64-22	PG58-22	PG 64-22
MAX % RAP ALLOWABLE**	10	15	10	25	15
DESIGN AIR VOIDS	4.0% @ N70	4.0% @ N70	4.0% @ N70	3.0% @ N50	4.0% @ N70
MIXTURE COMPOSITION	IL 12.5 OR IL 9.5	IL 9.5	IL 12.5 OR IL 9.5	IL 19.0	IL 19.0
FRICTION AGGREGATE	MIXTURE D		MIXTURE D		
DENSITY CONTROL METHOD	CORRELATION	SATISFACTION OF ENGINEER	SATISFACTION OF ENGINEER	*	CORES

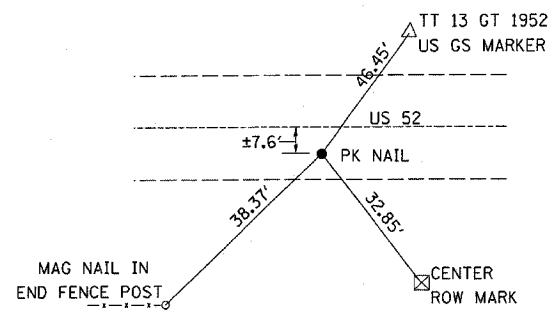
- * MATERIAL SHALL BE COMPACTED TO 93.0-97.4 PERCENT OF THE MAXIMUM THEORETICAL DENSITY, EXCEPT THAT WHEN PLACED AS FIRST LIFT ON AN UNIMPROVED SUBGRADE THE MINIMUM PERCENT COMPACTION SHALL BE 92.0 PERCENT. THE MAXIMUM THEORETICAL DENSITY SHALL BE DETERMINED FROM THE MOVING AVERAGE AS SPECIFIED IN THE QC/QA SPECIFICATION.
- ** IF RAP OPTION IS SELECTED, THE ASPHALT CEMENT GRADE MAY NEED TO BE ADJUSTED. THIS WILL BE DETERMINED BY THE ENGINEER.
- *** ASPHALT BINDER CONTENT SHALL BE INCREASED ACCORDINGLY TO ACHIEVE 3.0% VOID TARGET FOR SHOULDER MIXES.

MAINLINE												
STATIONS	HMA SURF REM	HMA SURF REM	MIX FOR CRKS, JTS FLANGE	LEV BIND (HM) N70	EXC & GRAD EXIST SHLD	HMA SHLDS 6"	BIT MAT PRIME COAT	AGG PR CT	LEV BIND (MM) N70	HMA SURFACE COURSE "D", N70	AGG WEDGE SHLD TY B	TEMP RAMP
	1 1/2"	BT JT										
	SQ YD	SQ YD	TON	TON	UNIT	SQ YD	GALLON	TON	TON	TON	TON	SQ YD
1103+30 - 1105+07BK	312	160	0.14	0.24	3.5	78.7	44.1	1.1	23.6	46.3	14.3	15.6
9+00AH - 16+16.5	1911		0.57	0.96	14.3	318.4	178.4	4.5	95.5	187.3	57.8	
16+16.5 - 16+56.5	125				0.8	17.8	11.4	0.3		12.0	3.2	
16+56.5 - 108+08	24404		7.32	12.20	183.0	4067.3	2277.7	56.9	1219.7	2391.6	737.9	15.6
108+08 - 108+30	STRUCTURE 047-0016											
108+30 - 335+73.2	60649		18.19	30.32	454.9	10108.0	5660.6	141.5	3031.2	5943.6	1,833.9	31.2
335+73.2 - 337+80.8	STRUCTURE 047-0060											
337+80.8 - 437+60	26451	160	7.98	13.31	199.6	4435.1	2483.7	62.1	1330.0	2607.9	804.7	31.2
437+60 - 442+40	RIDGE ROAD OMISSION											
442+40 - 488+52	12139	160	3.69	6.15	92.2	2049.8	1147.9	28.7	614.7	1205.3	371.9	31.2
TOTALS	125991	480	38	63	948	21075	11804	295	6315	12394	3824	125

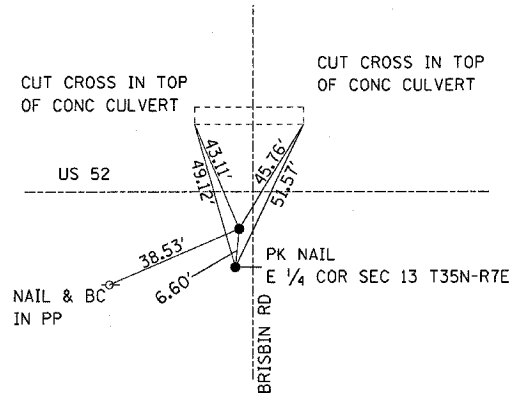
PATCHING	
LOCATION	CLASS D PATCH 15 INCH
	SQ YD
BEGIN JOB TO ASHLEY RD	8 @ 8
ASHLEY RD TO CHURCH RD	6 @ 8
CHURCH RD TO BRISBIN RD	6 @ 8
BRISBIN RD TO GROVE RD	4 @ 8
GROVE RD TO O'BRIEN RD	6 @ 8
O'BRIEN RD TO MCKANNA RD	2 @ 8
MCKANNA RD TO JUGHANDLE RD	8 @ 8
JUGHANDLE RD TO ARBEITER RD	4 @ 8
ARBEITER RD TO RIDGE RD	6 @ 8
RIDGE RD TO END JOB	6 @ 8
TOTALS	448

SIDEROADS AND ENTRANCES						
STATION	NUMBER	BIT MATLS PR CT	AGG PR CT	INC HMA SURF	HMA SURF REMOVAL 1 1/2"	TEMP RAMP
		GALLON	TON	TON	SQ YD	SQ YD
COMMERCIAL ENTRANCES	4	19		29	180	
PRIVATE ENTRANCES	43	110		165	1376	
MAILBOX TURNOUTS	39	87		131	1092	
SIDEROADS	12	115	2.9	158	960	266
TOTALS		332	2.9	483	3608	266

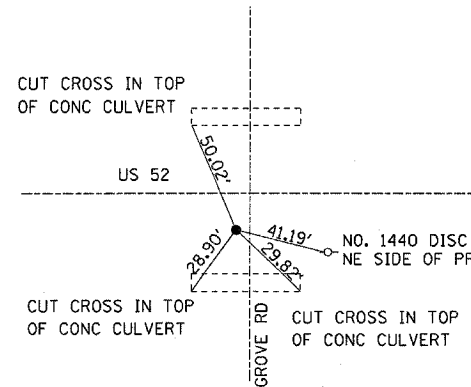
PAVEMENT MARKING				
LOCATION	PAINT PAVT MK LINE 4"		PAINT PAVT MK LINE 6"	RAISED REFL PVT MARK EACH
	WHITE FOOT	YELLOW FOOT	YELLOW FOOT	
STA. TO STA.				
1103+30 - 1105+07BK				
CENTERLINE EDGELINES	354		50	2
NO PASSING ZONES		177		
9+00AH - 488+52				
CENTERLINE EDGELINES	94944		11870	594
NO PASSING ZONES		2523		
TOTALS	95298	2700	11920	596



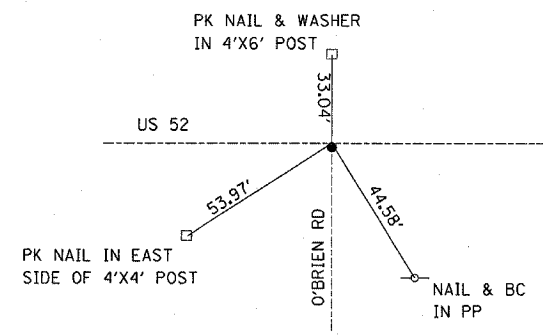
EAST QUARTER CORNER
SEC 16 T35N R7E THIRD PM KENDALL COUNTY
FOUND P.K. NAIL ±7.6' S. OF ϕ US 52



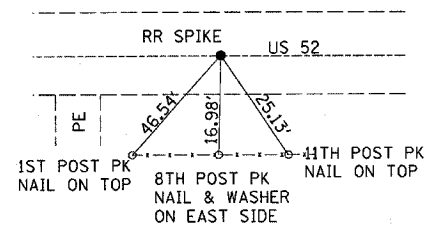
WEST QUARTER CORNER SECTION 18
T35N R8E THIRD PM KENDALL COUNTY
FOUND BRASS DISK ±6.6' S OF ϕ US 52



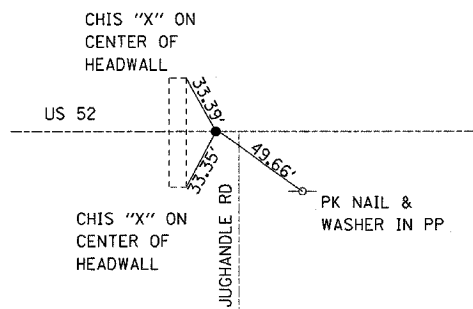
EAST QUARTER CORNER SECTION 18
T35N R8E THIRD PM KENDALL COUNTY
FOUND BRASS DISK ±11.5' S OF ϕ US 52



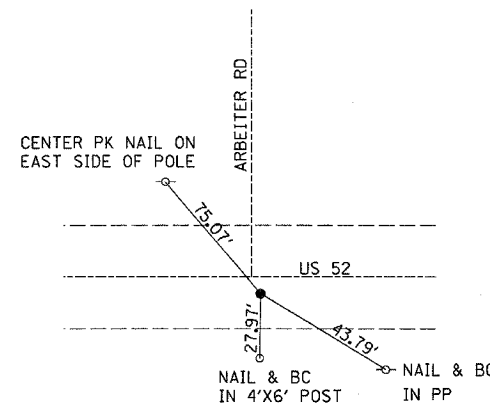
WEST QUARTER CORNER SECTION 16
T35N R8E THIRD PM KENDALL COUNTY
FOUND BRASS DISK ±1.5 S OF ϕ US 52



EAST QUARTER CORNER
SEC 16 T35N R8E THIRD PM KENDALL COUNTY
FOUND RR SPIKE ON ϕ US 52



CENTER OF SECTION 15
T35N R8E THIRD PM KENDALL COUNTY
FOUND BRASS DISK ON ϕ US 52



EAST QUARTER CORNER SECTION 15
T35N R8E THIRD PM KENDALL COUNTY
FOUND BRASS DISK ±3.0' S. OF ϕ US 52

FILE NAME =
c:\projects\ed06204\allshts.dgn

USER NAME = duncanbd
PLOT SCALE = 50.000' / IN.
PLOT DATE = Mar 18, 2008 - 10:31:24 AM

DESIGNED -
DRAWN -
CHECKED -
DATE -
REVISED -
REVISED -
REVISED -
REVISED -

STATE OF ILLINOIS
DEPARTMENT OF TRANSPORTATION

TIE POINTS

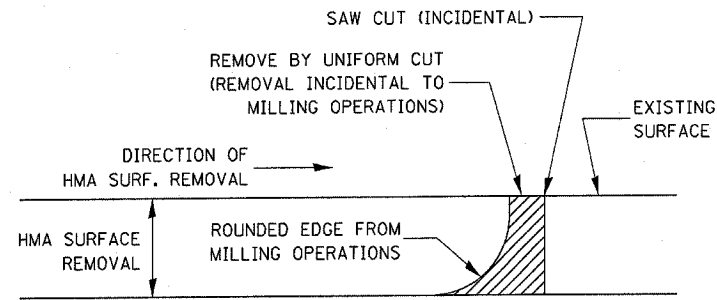
SCALE: SHEET NO. OF SHEETS STA. TO STA.

F.A.P. RTE.	SECTION	COUNTY	TOTAL SHEETS	SHEET NO.
607	(129,130)RS-3	KENDALL	9	6
FED. ROAD DIST. NO. ILLINOIS FED. AID PROJECT			CONTRACT NO. 66749	



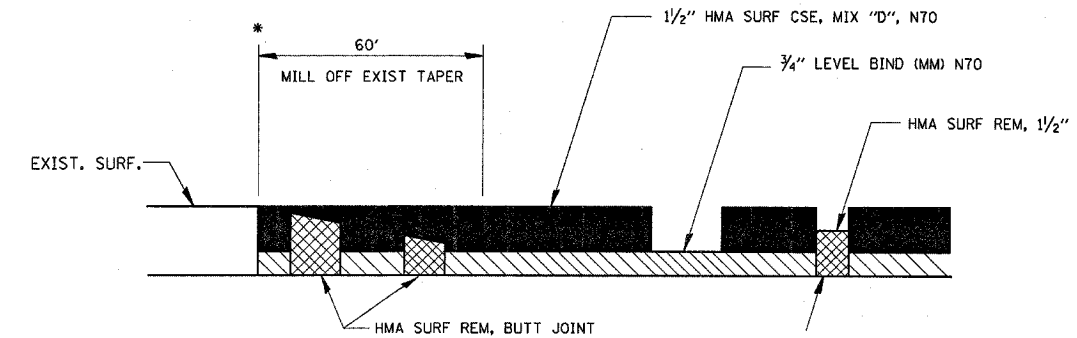
STATION EQUATION:
STA. 1105+07BK = STA. 9+00AH

FILE NAME = c:\projects\ed86204\allshs.dgn	USER NAME = duncanbd	DESIGNED -	REVISED -	STATE OF ILLINOIS DEPARTMENT OF TRANSPORTATION	PROJECT LAYOUT			F.A.P. RTE.	SECTION	COUNTY	TOTAL SHEETS	SHEET NO.
	PLOT SCALE = 50.000' / IN.	CHECKED -	REVISED -					607	(129,130)RS-3	KENDALL	9	7
PLOT DATE = Mar 18, 2008 - 10:31:04 AM	DATE -	REVISED -	REVISED -		SCALE:	SHEET NO.	OF	SHEETS	STA.	TO STA.	CONTRACT NO. 66474	
										FED. ROAD DIST. NO.	ILLINOIS FED. AID PROJECT	



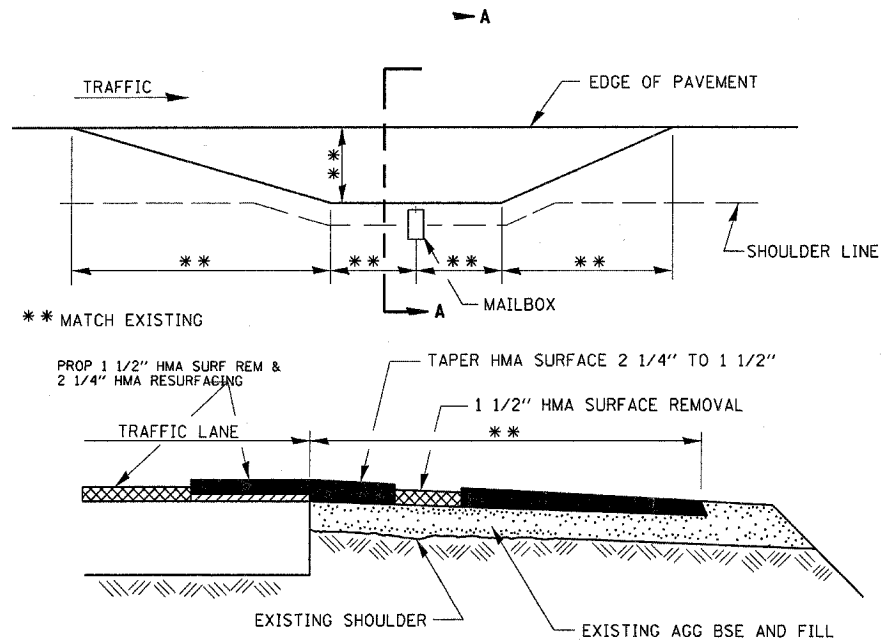
NOTE:
 WHEN MILLING OPERATIONS PRODUCE A ROUNDED EDGE, THEN A SAW CUT SHALL BE USED TO MANUFACTURE A PERPENDICULAR EDGE AS SHOWN IN THE DETAIL. THE ENGINEER SHALL BE THE SOLE JUDGE CONCERNING THE USE OF THIS DETAIL

HMA DETAIL AT BUTT JOINTS

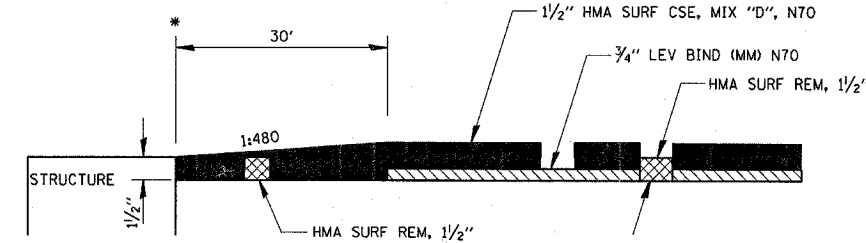


RIDGE ROAD OMISSION & BEGINNING TAPER

* STA. 1103+30
 STA. 437+60
 STA. 442+40

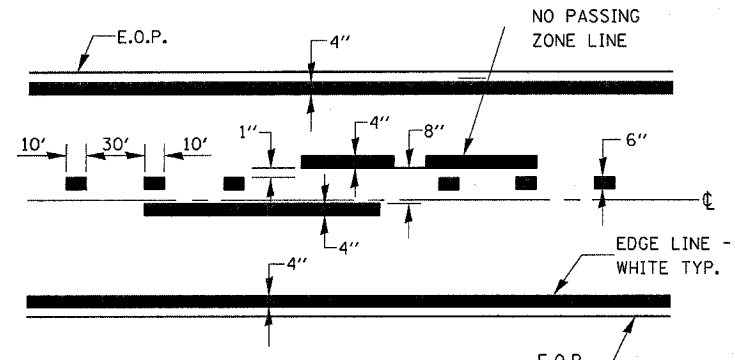


SECTION A-A RURAL MAILBOX TURNOUT DETAILS



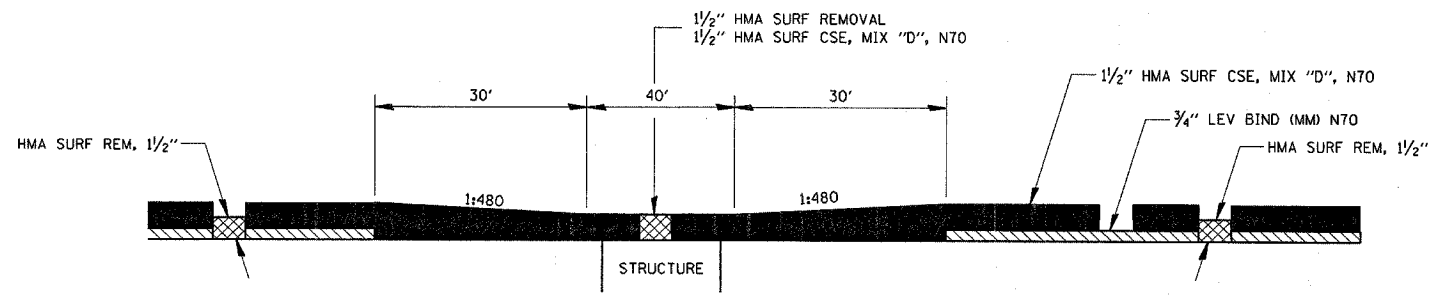
MILLING @ SN 047-0060

* STA. 335+73.2
 STA. 337+80.8



PAVEMENT MARKING

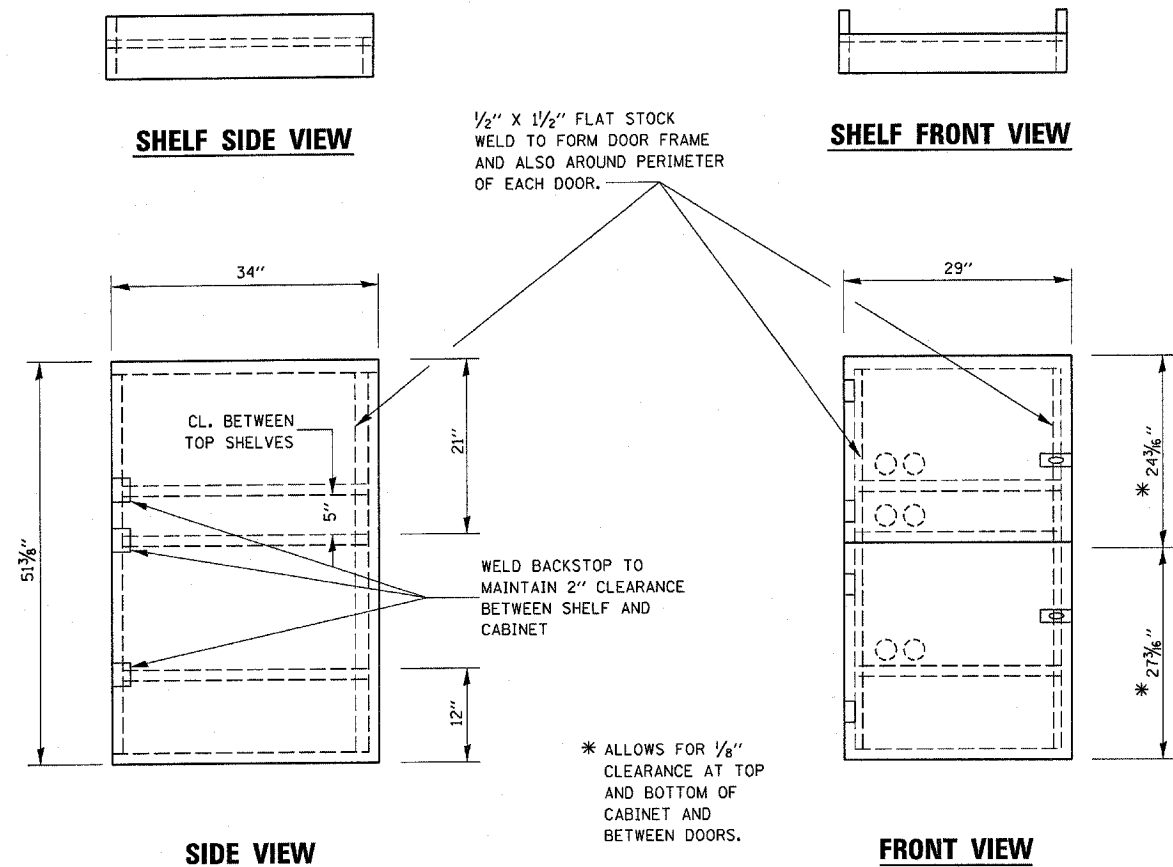
CENTERLIN & NO PASSING ZONE LINES - YELLOW
 (SEE TYPICAL SECTIONS)



MILLING @ SN 047-2005

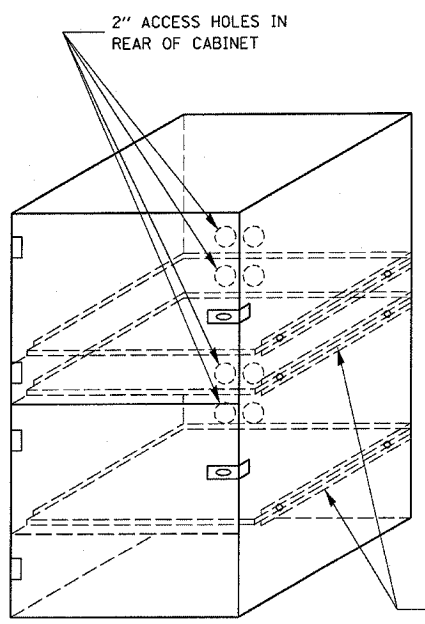
STA. 16+16.5 - STA. 16+56.5

FILE NAME = c:\projects\ed06204\allshs.dgn	USER NAME = duncanbd	DESIGNED -	REVISED -	STATE OF ILLINOIS DEPARTMENT OF TRANSPORTATION	DETAILS				F.A.P. RTE. 607	SECTION (129,130)RS-3	COUNTY KENDALL	TOTAL SHEETS 9	SHEET NO. 8
PLDT SCALE = 50,000' / IN.	PLDT DATE = Mar 18, 2008 - 10:36:46 AM	DRAWN -	REVISED -		SCALE:	SHEET NO.	OF	SHEETS	STA.	TO STA.	CONTRACT NO. 66474		
CHECKED -	DATE -	REVISED -	REVISED -		FED. ROAD DIST. NO. ILLINOIS FED. AID PROJECT								



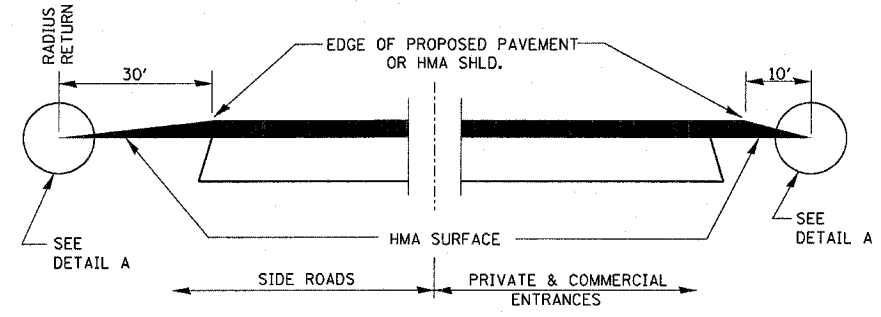
* ALLOWS FOR 1/8" CLEARANCE AT TOP AND BOTTOM OF CABINET AND BETWEEN DOORS.

- NOTES:
1. USE 16 GAUGE STEEL FOR CABINET.
 2. THE TOP SHELF SHALL SLIDE IN OR OUT WITH THE TOP DOOR OPEN.
 3. ALL HINGES AND HASPS WILL BE WELDED TO THE CABINET.
 4. ALL EDGES SHALL BE GROUND SMOOTH.
 5. TWO (2" DIA.) ACCESS HOLES WILL BE REQUIRED FOR EACH SHELF.
 6. CABINET SHALL BE PAINTED WITH TWO COATS OF FLAT PAINT.
 7. 2 EACH MATCHING KEY PADLOCKS, WITH 3 KEYS PROVIDED, MASTER MODEL 3 T OR EQUIVALENT.
 8. 4 EACH PLAIN STEEL, NON-REMOVABLE PIN, NO HOLE 4" x 4" SQUARE CORNER HINGES TO BE WELDED ON.
 9. 2 EACH EXTRA HEAVY, PLAIN STEEL, FIXED STAPLE, NO HOLE, 7/4" HASPS TO BE WELDED ON.

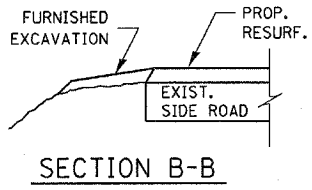


FLAT STOCK DIMENSIONS VARY DEPENDING ON TYPE OF ROLLER ASSEMBLY

LOCKABLE COMPUTER CABINET

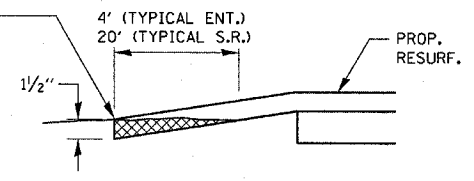


SECTION A-A
DETAILS AT ENTRANCES & SIDE ROADS

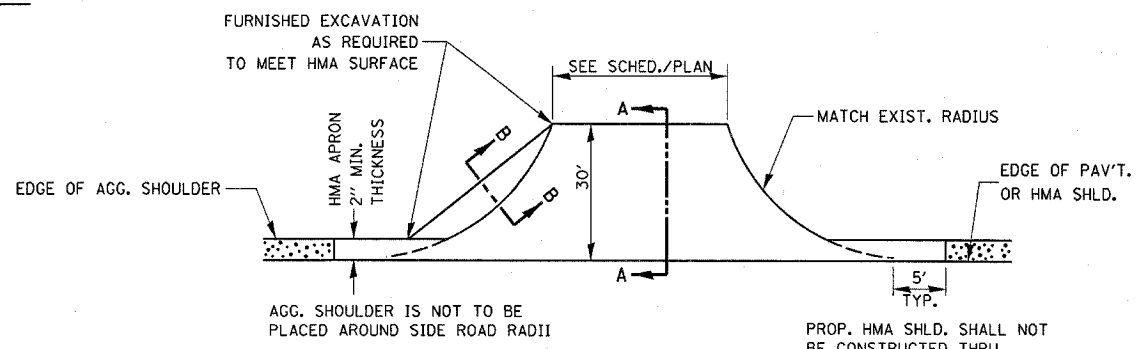


SECTION B-B

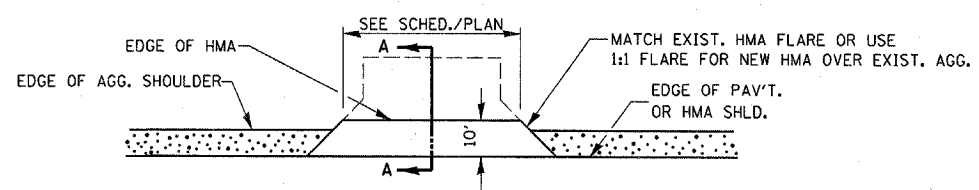
THE COST OF REMOVAL AT EXISTING HMA OR P.C.C. LOCATIONS SHALL BE PAID FOR PER SQ. YD. BY THE APPROPRIATE PAY ITEM. REMOVAL AT THE EXISTING AGG. LOCATIONS SHALL BE INCIDENTAL TO THE HMA. A-3 LOCATIONS SHALL BE FEATHER TAPERED.



DETAIL A



PLAN AT SIDE ROADS



PLAN AT PRIVATE & COMMERCIAL ENTRANCES

(DO NOT RESURFACE FIELD ENTRANCES)

FILE NAME = c:\projects\ed06204\allshls.dgn	USER NAME = dunoanbd	DESIGNED -	REVISED -	STATE OF ILLINOIS DEPARTMENT OF TRANSPORTATION	DETAILS				F.A.P. RTE. 607	SECTION (129,130)RS-3	COUNTY KENDALL	TOTAL SHEETS 9	SHEET NO. 9
	PLOT SCALE = 50,000' / IN.	DRAWN -	REVISED -		SCALE:	SHEET NO.	OF	SHEETS	STA.	TO STA.	CONTRACT NO. 66474		
	PLOT DATE = Mar 18, 2008 - 10:30:40 AM	CHECKED -	REVISED -								ILLINOIS FED. AID PROJECT		
		DATE -	REVISED -										