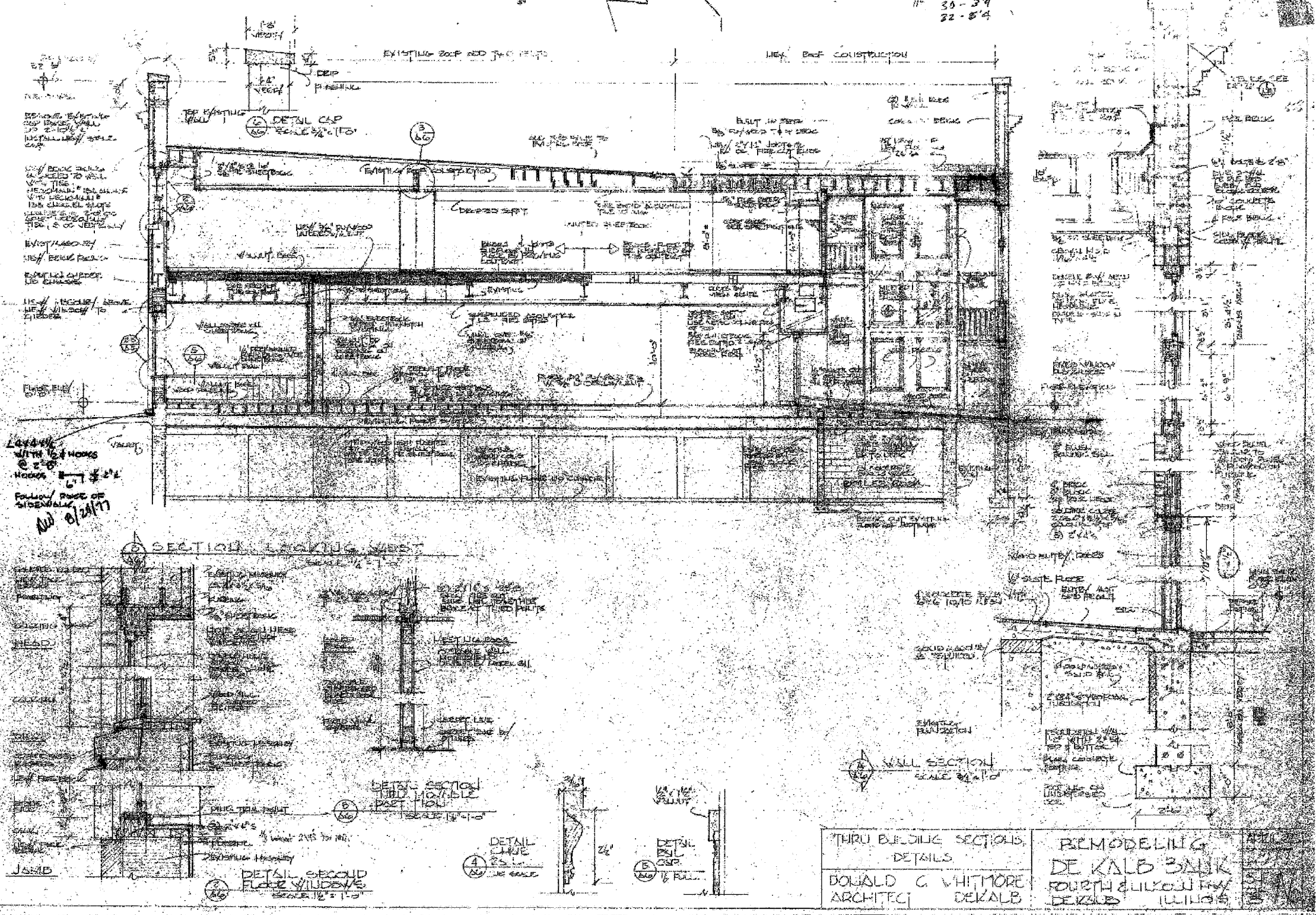


F.A.P. RTE.	SECTION	COUNTY	TOTAL SHEETS	SHEET NO.
324	(7) DM	DEKALB	24	21
STA. TO STA.		FED. ROAD DIST. NO. 3 ILLINOIS FED. AID PROJECT		

11' 30'-3 1/4
22'-8 1/4



LOOKING WITH 16' HOOKS @ 2'-0" HOOKS 1'-7" @ 2'-2" FOLLOW ROOF OF SIDEWALK NO. 9/24/77

THRU BUILDING SECTIONS, DETAILS
 DONALD G. WHITMORE ARCHITECT DEKALB
 REMODELING DE KALB BANK FOURTH & WILKINSON Fwy DEKALB ILLINOIS

PLOT DATE = 1/27/78
 PLOT SCALE = 4 AS NOTED
 USER NAME = ARR

REVISIONS	
NAME	DATE

ILLINOIS DEPARTMENT OF TRANSPORTATION
 EXISTING PLAN
 FAP 324 (IL 23)
 SECTION (7) DM
 DEKALB COUNTY
 SCALE: VERT. DRAWN BY A.R.R.
 HORIZ. CHECKED BY J.K.C.
 DATE

FOR INFORMATION ONLY