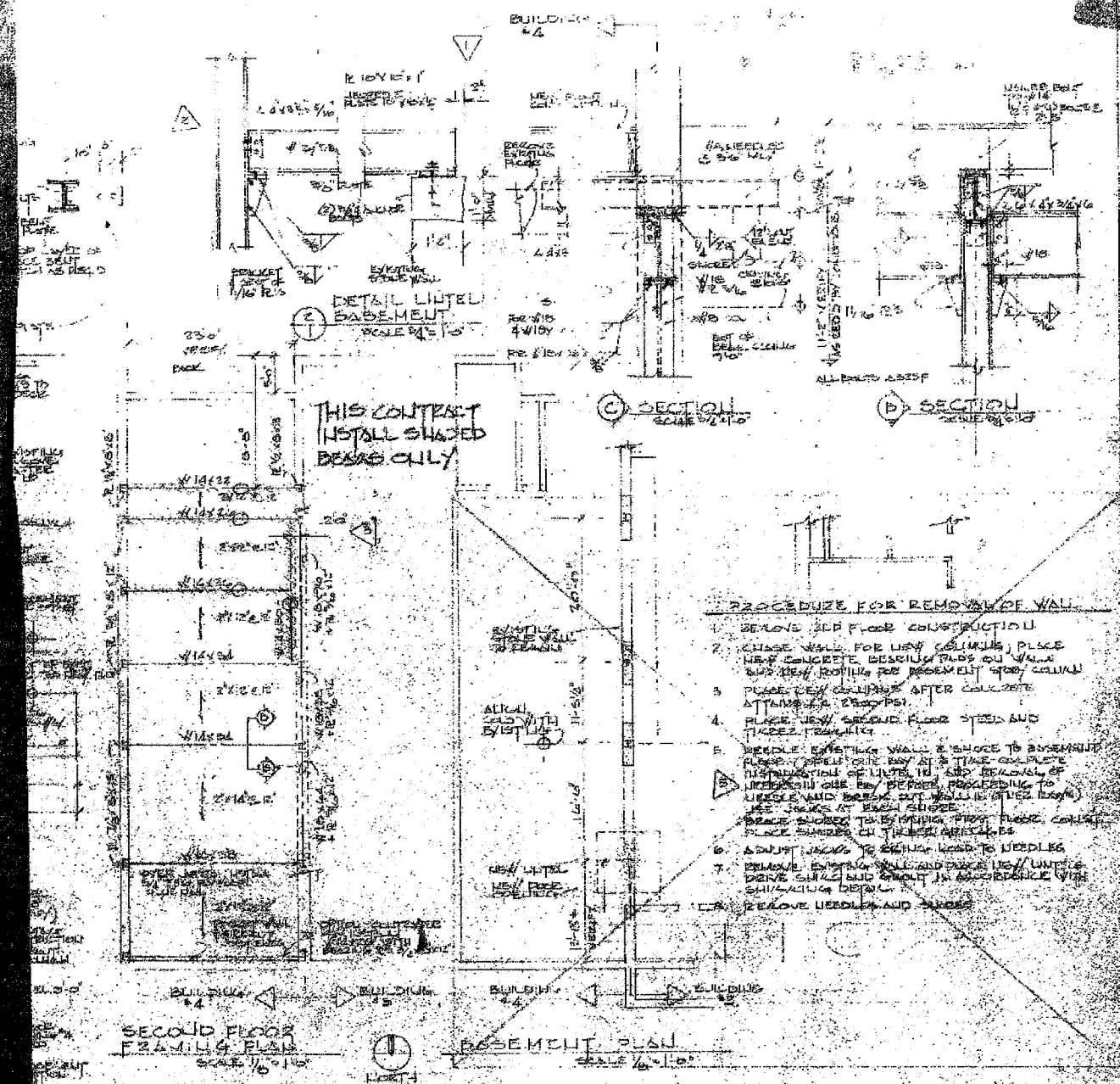
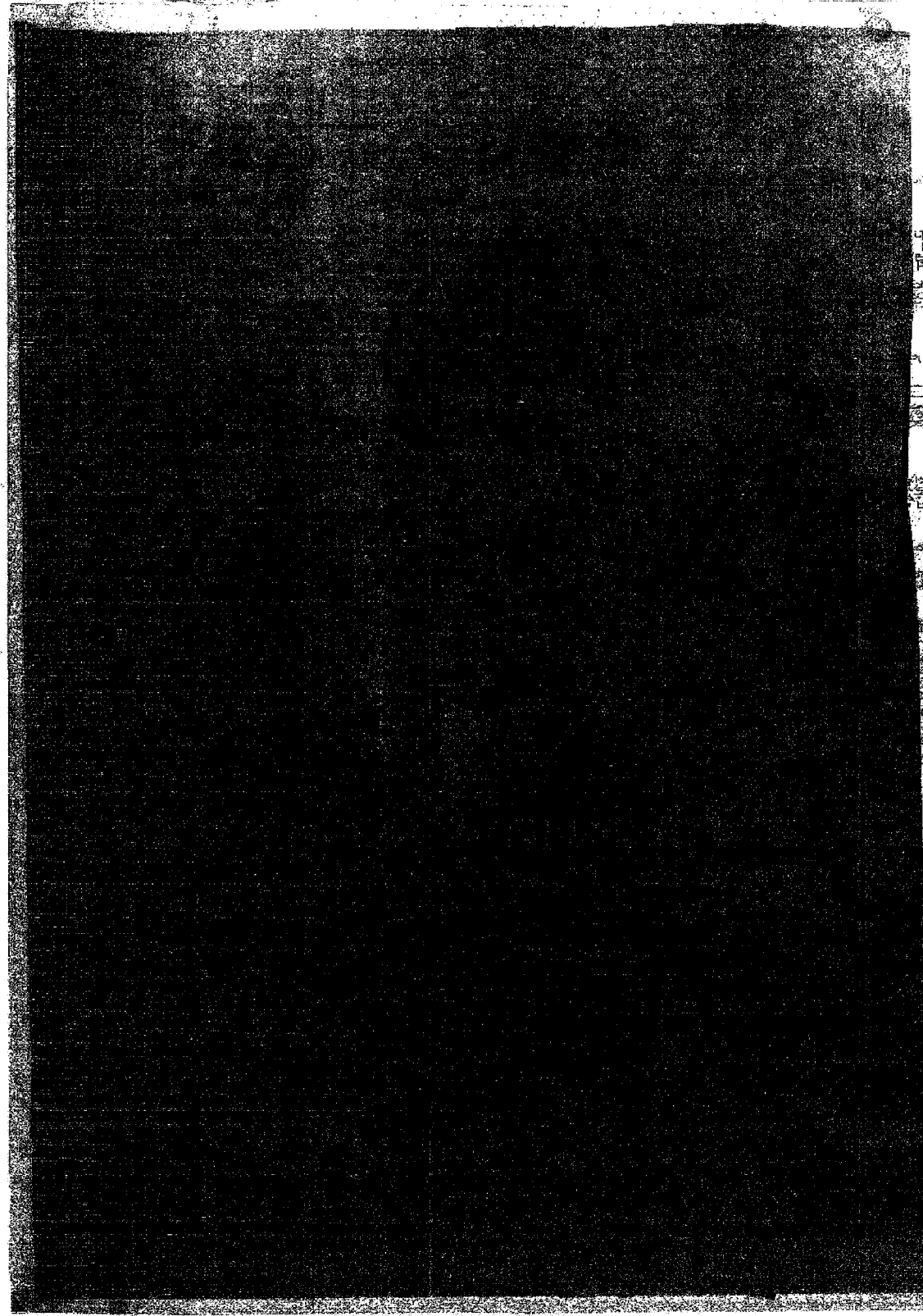


F.A.P. RTE.	SECTION	COUNTY	TOTAL SHEETS	SHEET NO.
324	(7) DM	DEKALB	24	24
STA. TO STA.		FED. ROAD DIST. NO. 3 ILLINOIS FED. AID PROJECT		



THIS CONTRACT INSTALL SHAVED BEAMS ONLY

- PROCEDURE FOR REMOVAL OF WALL**
1. REMOVE 2ND FLOOR CONSTRUCTION
 2. CHASE WALL FOR NEW COLUMNS, PLACE NEW CONCRETE BESSUM PLDS ON WALL AND NEW ROOFING FOR BASEMENT STAY COLUMN
 3. PLACE NEW COLUMNS AFTER CONCRETE ATTAINS 2800 PSI
 4. PLACE NEW SECOND FLOOR STEEL AND TRUSS TRUSSING
 5. BRIDGE EXISTING WALL & SHOULDER TO BASEMENT FLOOR, BRIDGE FOR 14' AT A TIME COMPLETE INSPECTION OF LIMITS TO AND REMOVAL OF UNDESIRABLE BRG/PIERS, PROCEEDING TO UNDER AND BESSUM ST. WALL IN OTHER DIRM) USE BRG AT EACH SHORE BRACE SHORED TO EXISTING PIER, PLACE CONCR. PLACE SHORED ON THESE BRG'S
 6. ADJUST BRG'S TO BRIDGE HEAD TO BRIDGES
 7. REMOVE EXISTING WALL AND BRG'S UN/ LIMITS DIRM SHAD AND BRG IN ACCORDANCE WITH SHADING DETAIL
 8. REMOVE BRIDGES AND BRG'S

NO.	REVISIONS
1	WALL REMOVAL NOTES
2	STRUCTURAL STEEL DETAILS
3	REMODELING
4	DEKALB BALK
5	FOURTH LINCOLN HWY
6	DEKALB ILLINOIS

WALL REMOVAL NOTES
STRUCTURAL STEEL DETAILS
REMODELING
DEKALB BALK
FOURTH LINCOLN HWY
DEKALB ILLINOIS

FOR INFORMATION ONLY

REVISIONS	
NAME	DATE

ILLINOIS DEPARTMENT OF TRANSPORTATION
EXISTING PLAN
FAP 324 (IL 23)
SECTION (7) DM
DEKALB COUNTY
SCALE: VERT. _____
 HORIZ. _____
DATE _____
DRAWN BY A.R.R.
CHECKED BY J.K.C.

PLOT DATE = 2/07
PLOT SCALE = AS NOTED
USER NAME = ARR