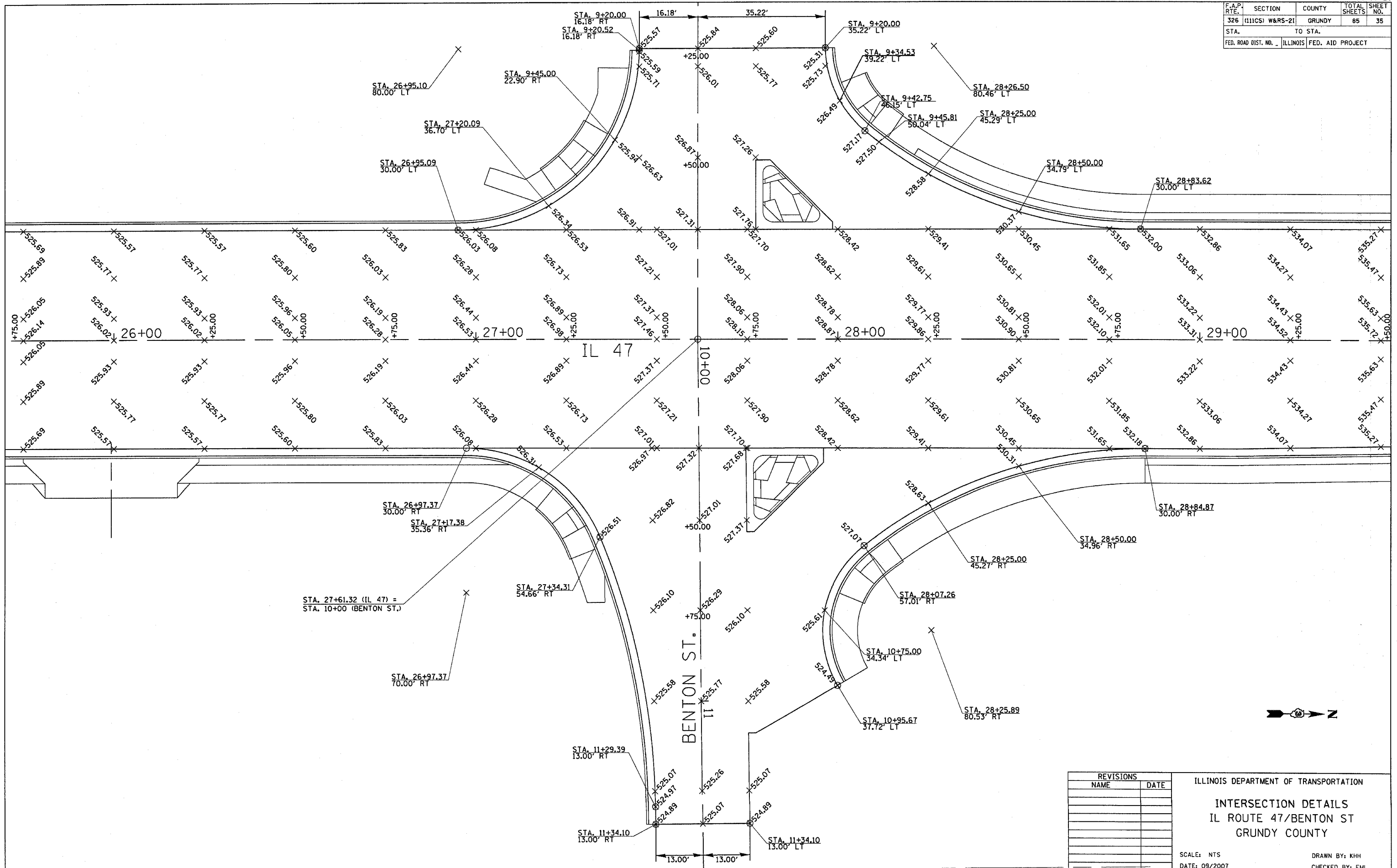


F.A.P. SECTION	COUNTY	TOTAL SHEETS	SHEET NO.
326 (111CS) W&RS-21	GRUNDY	85	35
STA. TO STA.			
FED. ROAD DIST. NO. ILLINOIS FED. AID PROJECT			



PLOT DATE = Feb 06, 2008 - 10:31:29 AM
 FILE NAME = c:\work\project\66720\consult\phase 2\intersection detail sheets.dgn
 USER NAME = schwanberg

REVISIONS	
NAME	DATE

ILLINOIS DEPARTMENT OF TRANSPORTATION

INTERSECTION DETAILS
IL ROUTE 47/BENTON ST
GRUNDY COUNTY

SCALE: NTS
 DATE: 09/2007

DRAWN BY: KHH
 CHECKED BY: FML