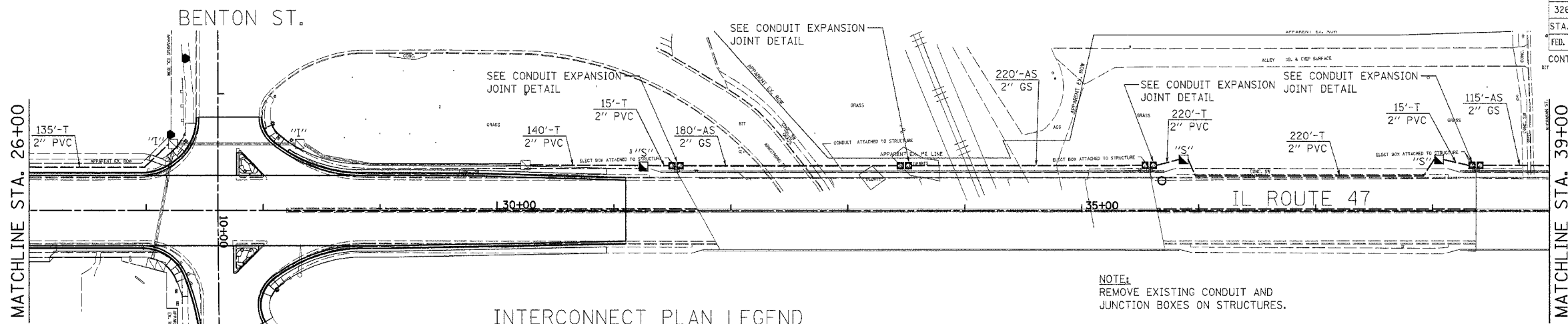


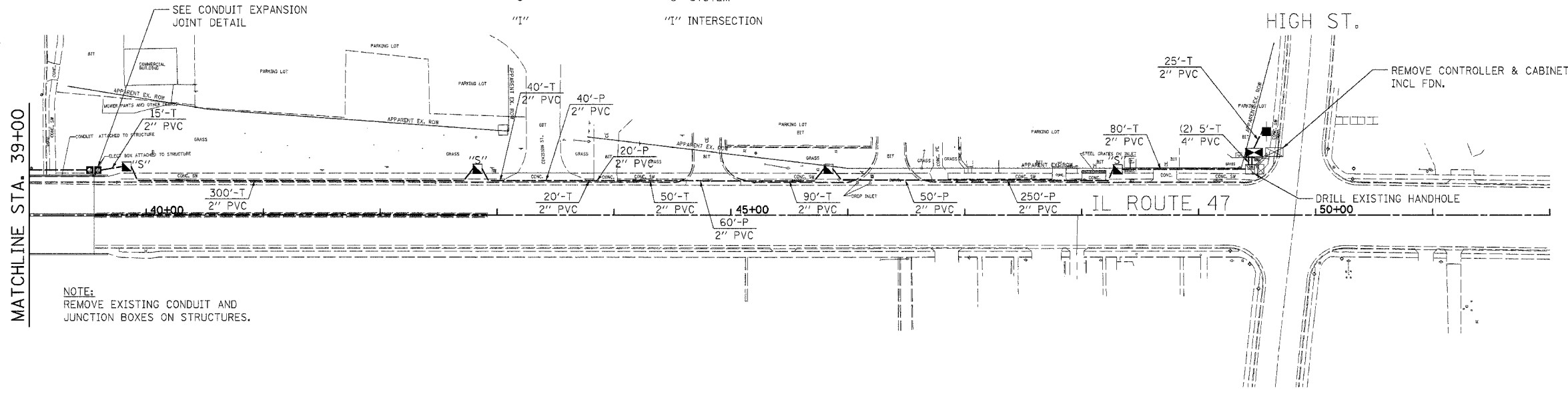
F.A.P. RTE.	SECTION	COUNTY	TOTAL SHEETS	SHEET NO.
326	(111CS) W&RS-21	GRUNDY	85	51
STA. 26+00		TO STA. 52+00		
FED. ROAD DIST. NO.		ILLINOIS	FED. AID PROJECT	
CONTRACT NUMBER: 66720				



INTERCONNECT PLAN LEGEND

		CONTROLLER
		HANDHOLE
		DOUBLE HANDHOLE
CONDUIT: "T" TRENCHED, "P" PUSHED, "AS" ATTACHED TO STRUCTURE		
"S"	"S"	"S" SYSTEM
"I"	"I"	"I" INTERSECTION

NOTE:
REMOVE EXISTING CONDUIT AND
JUNCTION BOXES ON STRUCTURES.

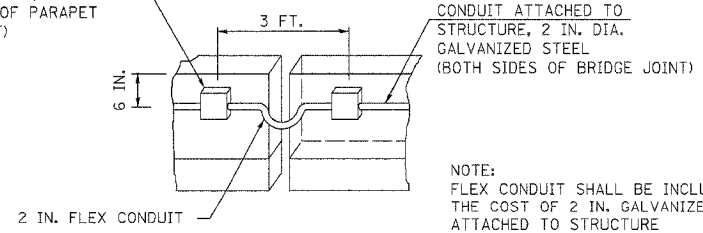


NOTE:
REMOVE EXISTING CONDUIT AND
JUNCTION BOXES ON STRUCTURES.

REMOVE CONTROLLER & CABINET COMPLETE
INCL. FDN.

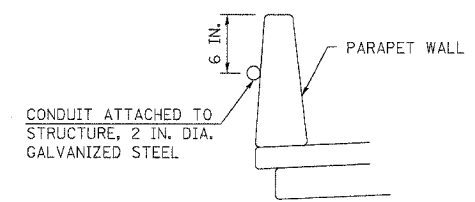
DRILL EXISTING HANDHOLE
150+00

24 IN. X 24 IN. X 10 IN. JUNCTION
BOX, STAINLESS STEEL, ATTACHED
TO OUTSIDE FACE OF PARAPET
WALL (2 PER JOINT)

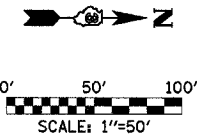


CONDUIT EXPANSION JOINT DETAIL
NOT TO SCALE

NOTE:
CONDUIT SHALL BE ATTACHED
TO STRUCTURE IN ACCORDANCE
WITH SECTION 8.11.03(B) OF THE
STANDARD SPECIFICATIONS



CONDUIT ATTACHMENT TO STRUCTURE DETAIL
NOT TO SCALE



REVISIONS	
NAME	DATE

ILLINOIS DEPARTMENT OF TRANSPORTATION

INTERCONNECT PLAN
IL. RTE. 47 (DIVISION ST.)
SHEET 2 OF 3

SCALE: 1"=50'
DATE: JANUARY 2008

DRAWN BY: JVR
CHECKED BY: FML

\\plens\interconnect-2.dgn 2/18/2008 4:38:38 PM