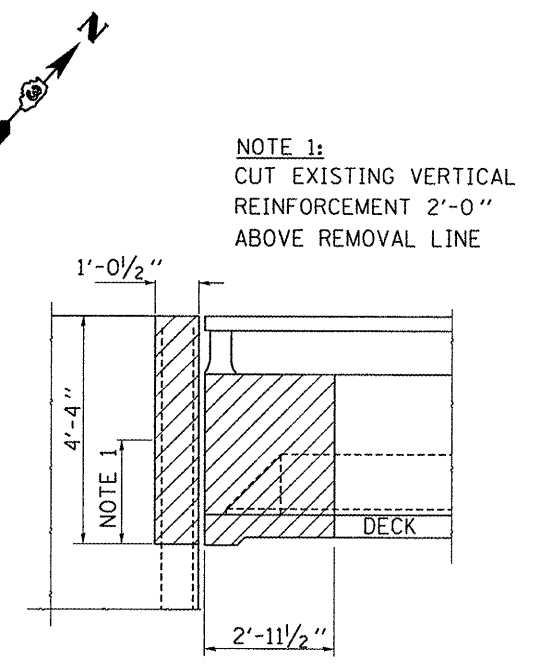
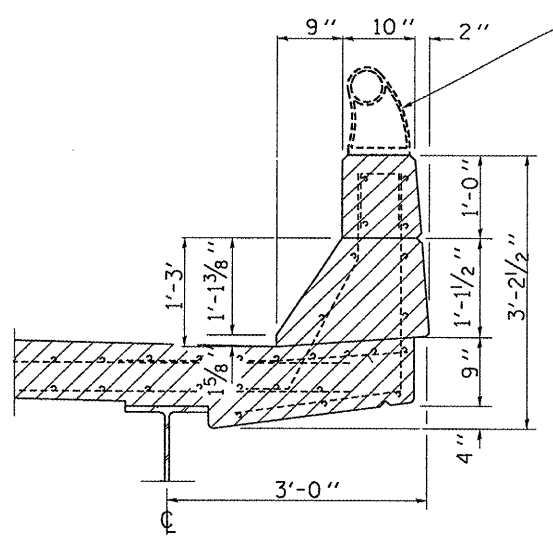


PLAN
SOUTH ABUT. SHOWN
NORTH ABUT. SIMILAR
THRU 180° ROTATION

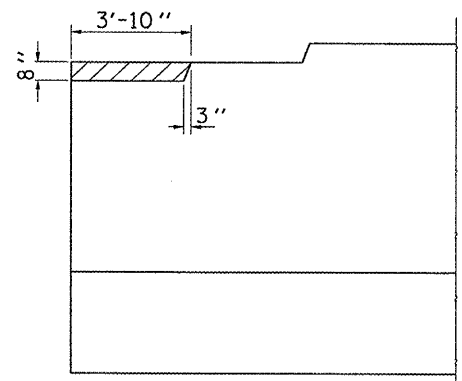


VIEW B-B
TYPICAL

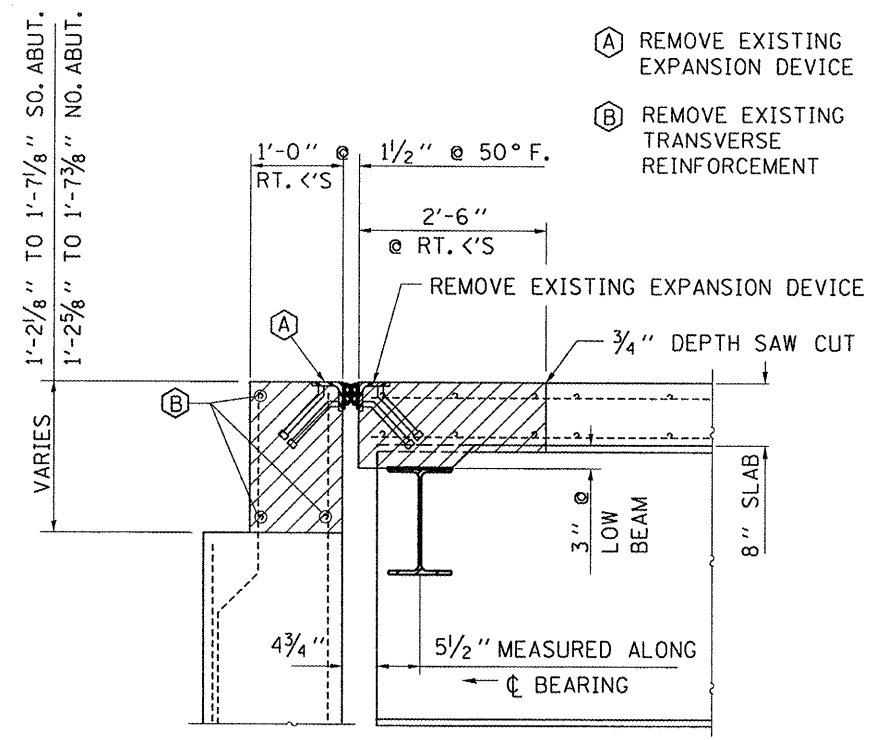


CURB SECTION
TYPICAL

EXISTING POST AT EACH CORNER TO BE REMOVED AND REINSTALLED. COST INCLUDED WITH REMOVING AND RE-ERECTING EXISTING RAILING. SEE SPECIAL PROVISIONS.



WING ELEVATION
TYPICAL



SECTION A-A

NOTES:
REMOVAL LIMITS SHALL BE SCORE CUT A MAXIMUM OF 3/4" INTO THE CONCRETE.
REMOVAL OF EXISTING EXPANSION DEVICE WILL BE INCLUDED IN THE COST OF "CONCRETE REMOVAL"
HATCHED AREAS INDICATE AREAS OF CONCRETE REMOVAL.

BILL OF MATERIAL

ITEM	UNIT	TOTAL
CONCRETE REMOVAL	CU YD	13.6

FILE NAME =	USER NAME = #USER#	DESIGNED - RON WOODSHANK	REVISED - 03/21/2008
#FILEL#		DRAWN - RON WOODSHANK	REVISED - 03/21/2008
	PLOT SCALE = #SCALE#	CHECKED -	REVISED -
	PLOT DATE = #DATE#	DATE -	REVISED -

STATE OF ILLINOIS
DEPARTMENT OF TRANSPORTATION

CONCRETE REMOVAL

SCALE: SHEET NO. 1 OF 1 SHEETS STA. 571+00.67 TO STA. 573+01.17

F.A.P. RTE.	SECTION	COUNTY	TOTAL SHEETS	SHEET NO.
846	(6B-1)I	GRUNDY	29	19
CONTRACT NO. 66728				
FED. ROAD DIST. NO. ILLINOIS FED. AID PROJECT				