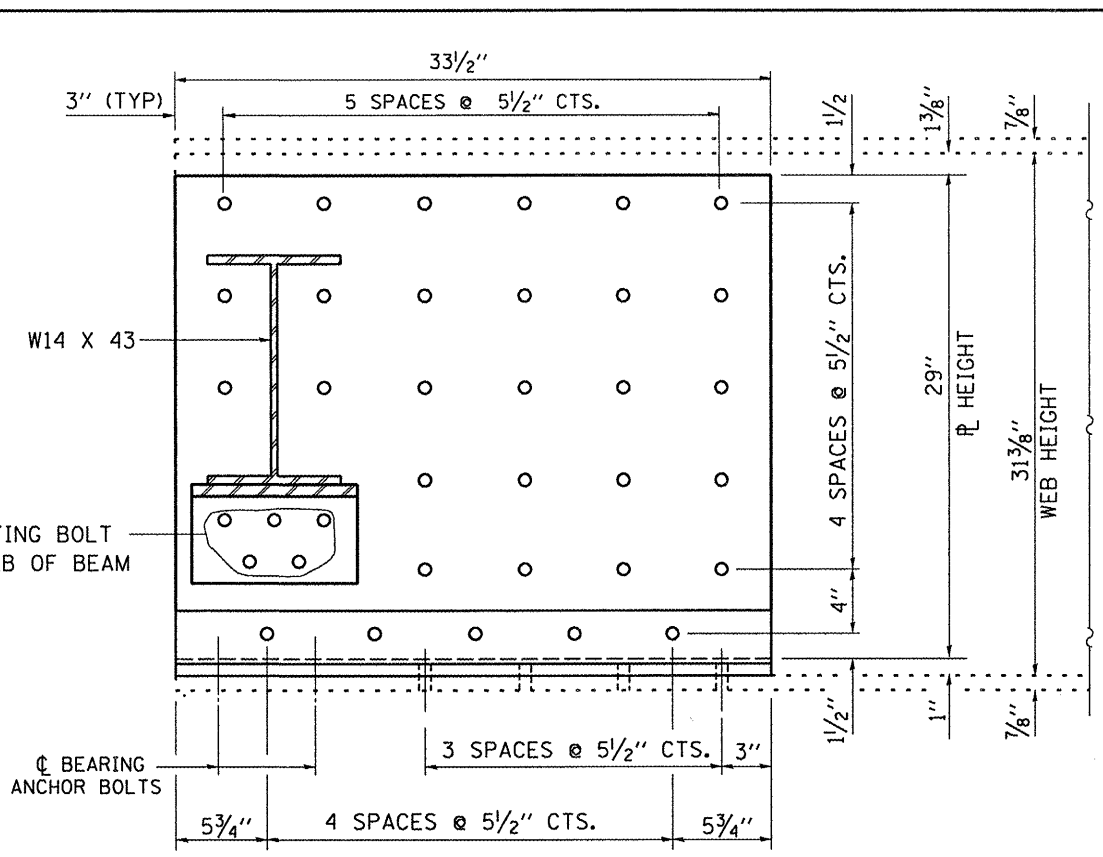
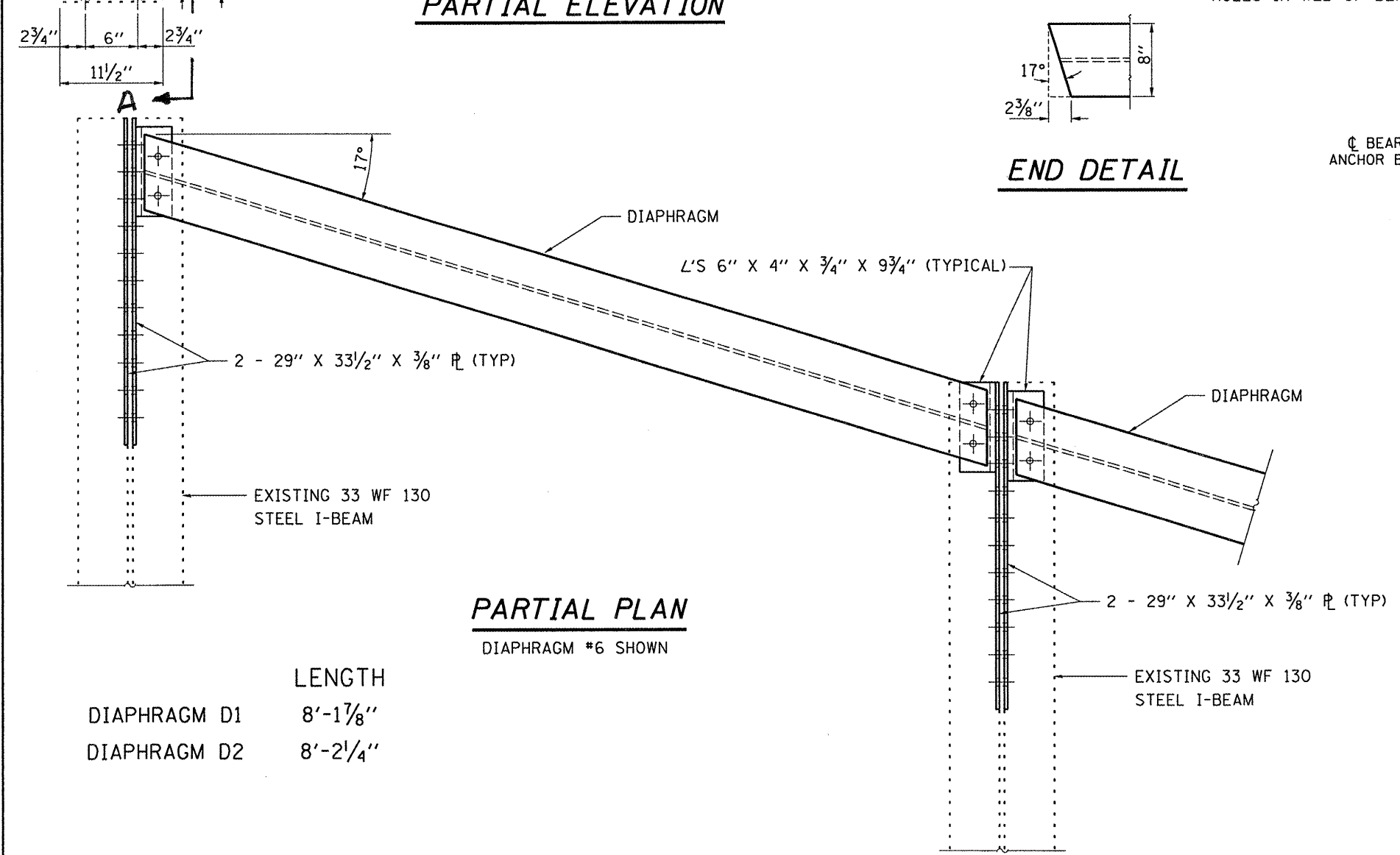


**PARTIAL ELEVATION**



**VIEW A-A**

**NOTES:**  
 ALL BEAM ENDS AT THE SOUTH ABUTMENT SHALL BE PLATED WITH THE EXCEPTION OF BEAM #3.  
 BEAM END PLATING SHALL NOT BE REQUIRED AT THE NORTH ABUTMENT.



**PARTIAL PLAN**

DIAPHRAGM #6 SHOWN

	LENGTH
DIAPHRAGM D1	8'-1 7/8"
DIAPHRAGM D2	8'-2 1/4"

**BILL OF MATERIAL**

ITEM	UNIT	TOTAL
STRUCTURAL STEEL REPAIR	POUND	3440
STRUCTURAL STEEL REMOVAL	POUND	1950
FURNISHING AND ERECTING STRUCTURAL STEEL	POUND	1950