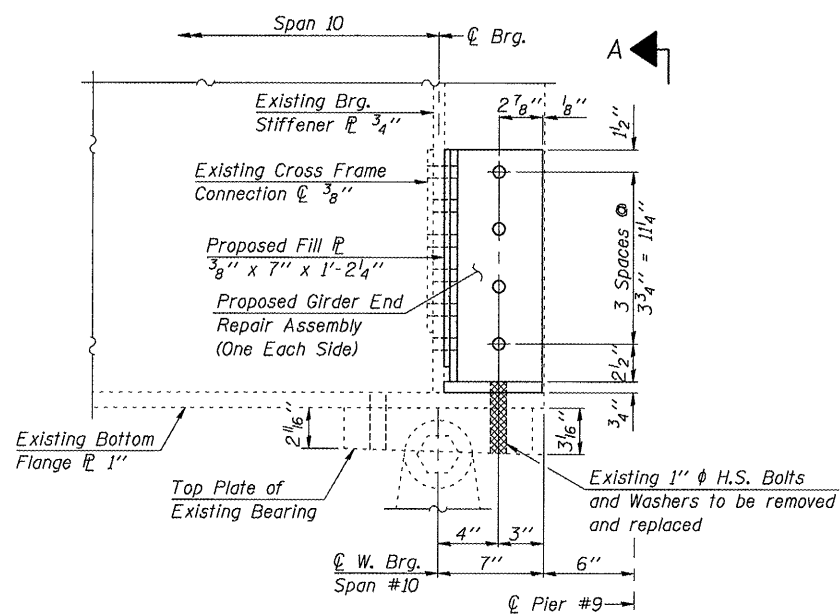


STATE OF ILLINOIS
DEPARTMENT OF TRANSPORTATION

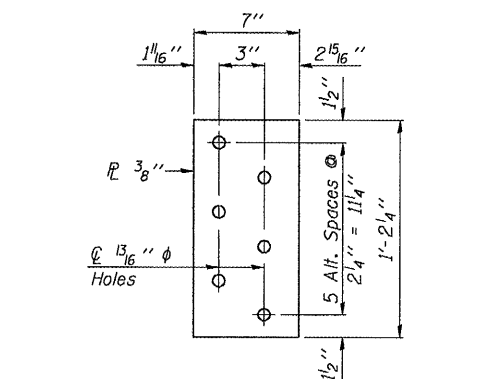
ROUTE NO.	SECTION	COUNTY	TOTAL SHEETS	SHEET NO.
FAI-180	06-3.78-11-2	BUREAU/PUTNAM	12	8
FED. ROAD DIST. NO. 7	ILLINOIS	CONTRACT NO. 66734		

SHEET NO. 4
OF 8 SHEETS



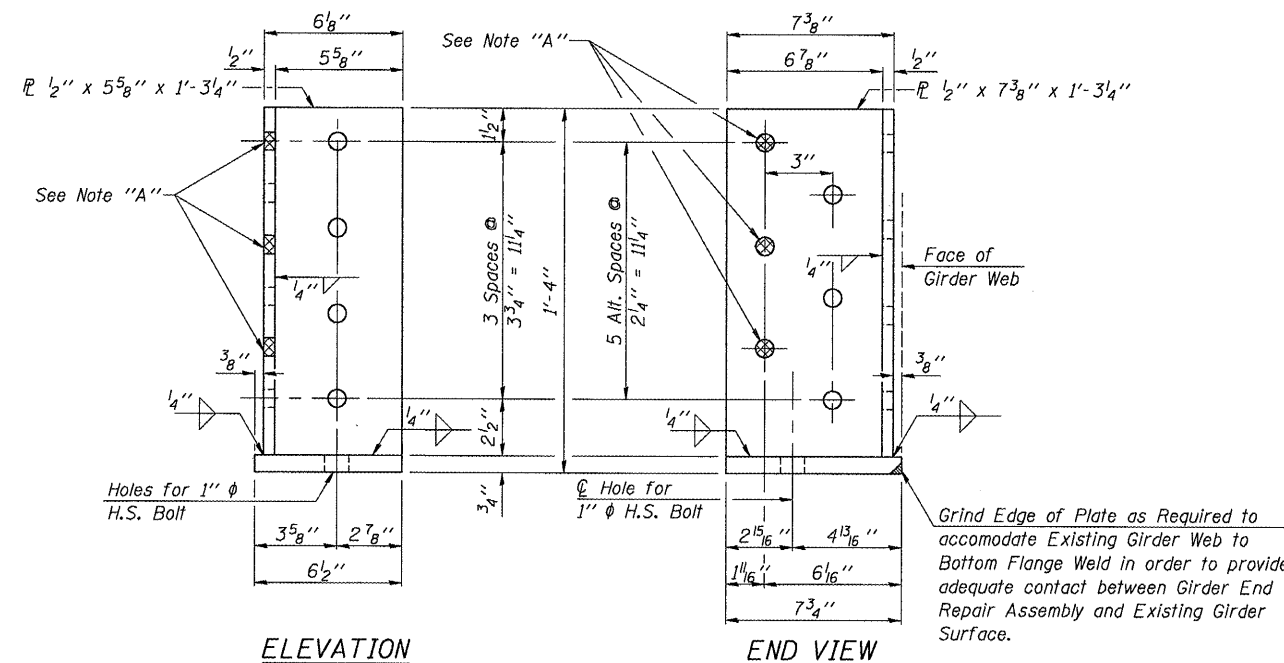
END OF GIRDER ELEVATION

(Looking North @ Girder Line #4 in Span #10)
(Cross Frame Members not shown for clarity.)



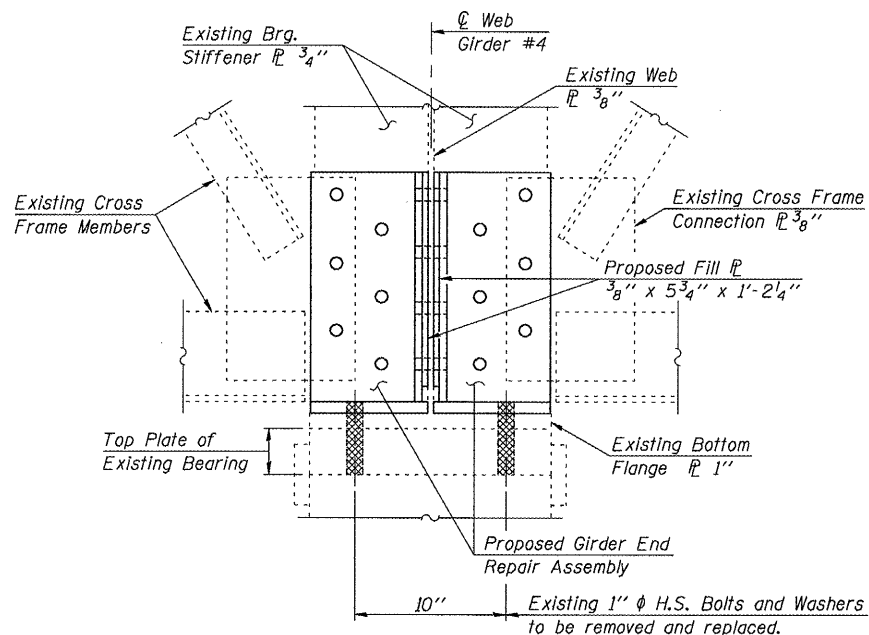
STIFFENER/ASSEMBLY FILL PLATE

(2-Required)

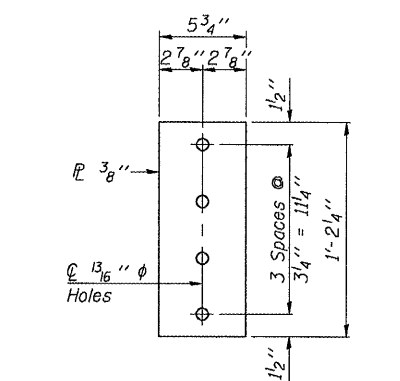


ELEVATION

END VIEW

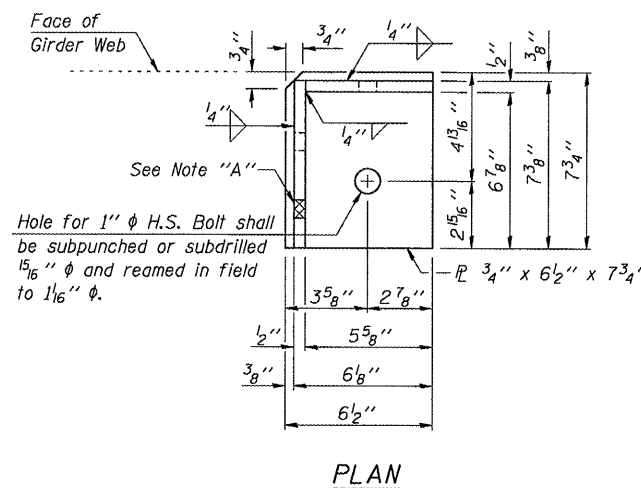


VIEW A-A
(Looking West)



WEB/ASSEMBLY FILL PLATE

(2-Required)



PLAN

Note "A": Except as noted, all holes are for 3/4" ϕ H.S. Bolts. Holes shown as cross-hatched are to match existing bolt location and shall be subpunched or subdrilled 1/16" ϕ and reamed in the field to 13/16" ϕ . All other holes for 3/4" ϕ H.S. Bolts shall be provided 13/16" ϕ . The assembly shall be used as a template for drilling holes in the existing girder web and bearing stiffener.

GIRDER END REPAIR ASSEMBLY

2-Required: Details shown are for repair on South Side of Girder end. Assembly for North side of Girder End shall be opposite-hand of details shown.

BILL OF MATERIAL

ITEM	UNIT	QUANTITY
Structural Steel Repair	Pound	140

GIRDER END REPAIR DETAILS
FAI ROUTE 180 OVER ILLINOIS RIVER
SECTION (06-3.78-11)-2
BUREAU/PUTNAM COUNTIES
S.N. 078-0001

DESIGNED	J.A.M.	200
CHECKED	A.R.K.	EXAMINED
DRAWN	S.A.P.	PASSED
CHECKED	A.R.K. & J.A.M.	ENGINEER OF BRIDGES AND STRUCTURES