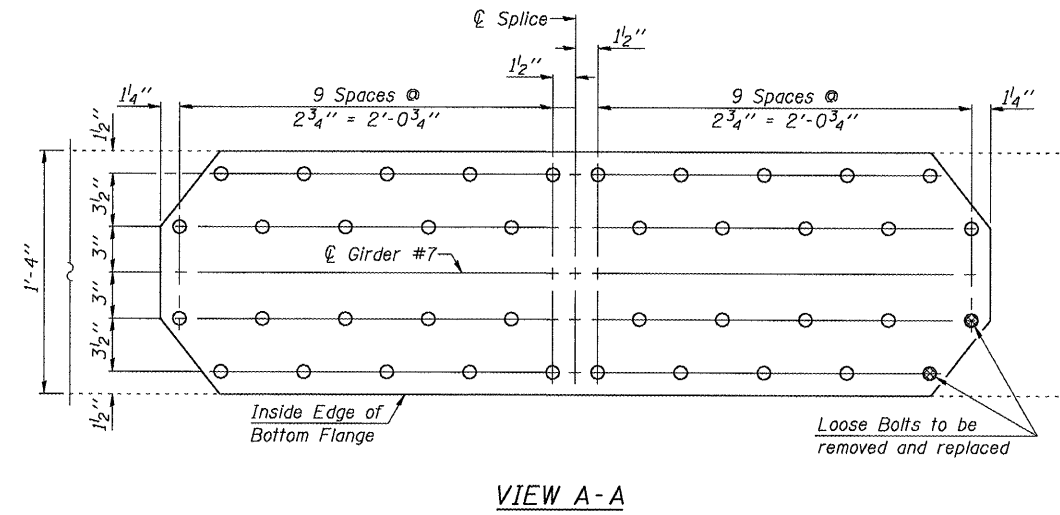
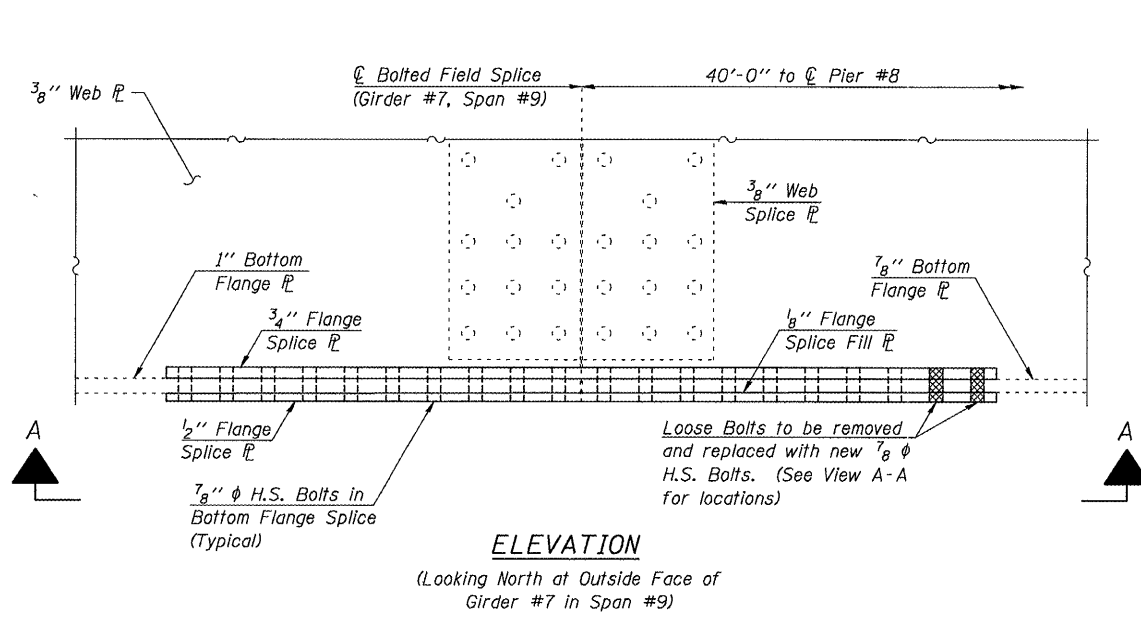


STATE OF ILLINOIS
DEPARTMENT OF TRANSPORTATION

ROUTE NO.	SECTION	COUNTY	TOTAL SHEETS	SHEET NO.
FAI-180	06-3,78-1I-2	BUREAU/ PUTNAM	12	10
FED. ROAD DIST. NO. 7	ILLINOIS	CONTRACT NO. 66734		

SHEET NO. 6
OF 8 SHEETS



DESIGNED	J.A.M.	200
CHECKED	A.R.K.	EXAMINED
DRAWN	S.A.P.	PASSED
CHECKED	A.R.K. & J.A.M.	ENGINEER OF BRIDGES AND STRUCTURES

FLANGE SPLICE DETAILS
FAI ROUTE 180 OVER ILLINOIS RIVER
SECTION (06-3,78-1I-2
BUREAU/PUTNAM COUNTIES
S.N. 078-0001