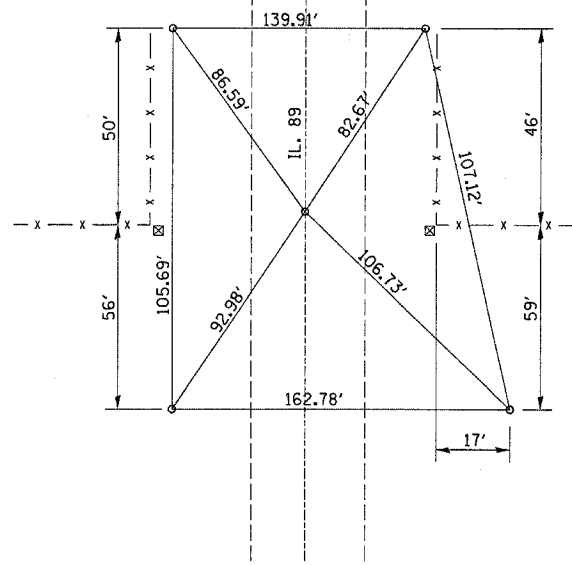


NORTHWEST CORNER
 SEC 15 T16N R11E, FOURTH PM BUREAU CO.
 ALL REFERENCE POINTS
 ARE IRON BARS WITH CAPS



WEST QUARTER CORNER
 SEC 15 T16N R11E FOURTH PM BUREAU CO.
 SET P.K. NAIL .6' W OF C

FILE NAME =
 c:\projects\ed03108\details.dgn

USER NAME = braboypc
 PLOT SCALE = 50.0000' / IN.
 PLOT DATE = Mar 15, 2008 - 02:34:25 PM

| | |
|------------|-----------|
| DESIGNED - | REVISED - |
| DRAWN - | REVISED - |
| CHECKED - | REVISED - |
| DATE - | REVISED - |

**STATE OF ILLINOIS
 DEPARTMENT OF TRANSPORTATION**

TIE POINTS
 SCALE: SHEET NO. OF SHEETS STA. TO STA.

| F.A.P. RTE. | SECTION | COUNTY | TOTAL SHEETS | SHEET NO. |
|---|---------------|--------|--------------|-----------|
| 698 | (102,103)RS-4 | BUREAU | 12 | 8 |
| CONTRACT NO. 66762 | | | | |
| FED. ROAD DIST. NO. ILLINOIS FED. AID PROJECT | | | | |