

F.A.P. RTE.	SECTION	COUNTY	TOTAL SHEETS	SHEET NO.
316	(116)RS-6	BUREAU	8	1
FED. ROAD DIST. NO.	ILLINOIS	CONTRACT NO. 66765		

STATE OF ILLINOIS  
DEPARTMENT OF TRANSPORTATION  
DIVISION OF HIGHWAYS  
**PROPOSED  
HIGHWAY PLANS**

FAP 316 ROUTE IL 26  
SECTION (116)RS-6  
PROJECT F-0316(034)  
BUREAU COUNTY

C - 93 - 058 - 08

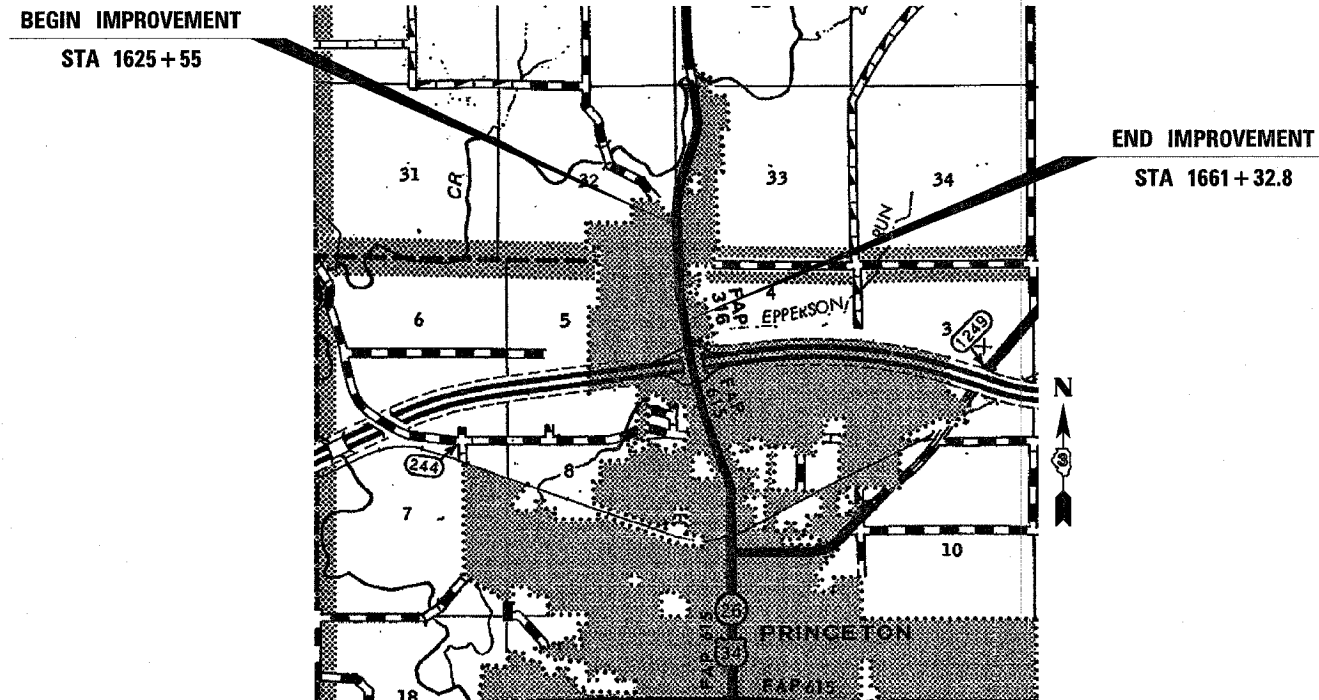
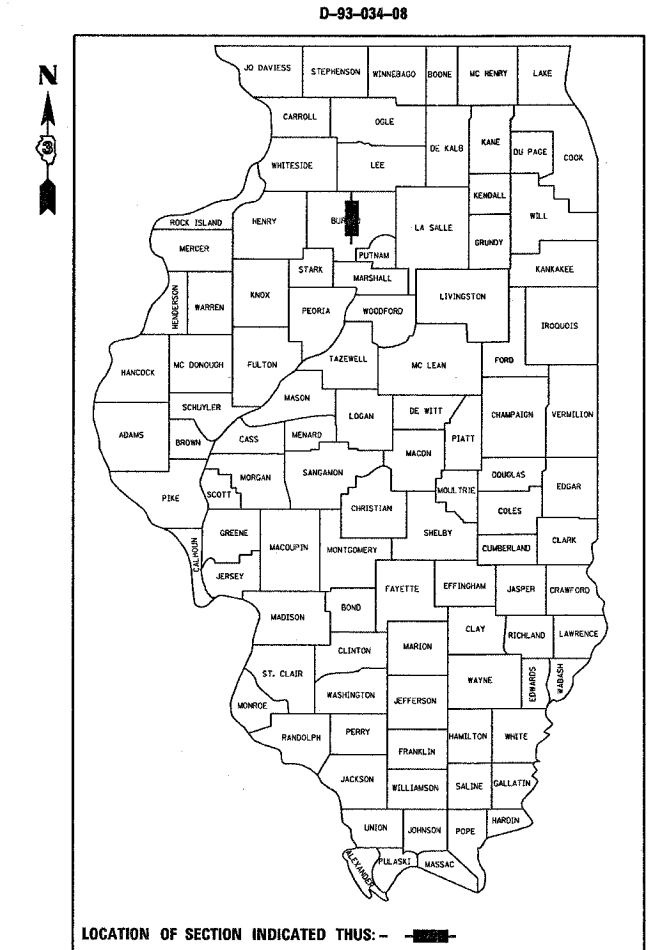
SMART RESURFACING FROM SOUTH OF  
RED COVERED BRIDGE ROAD (CR 1990 E)  
TO NORTH OF I-80

INDEX OF SHEETS

- 1 COVER SHEET
- 2 GENERAL NOTES
- 3 SUMMARY OF QUANTITIES
- 4 TYPICAL SECTIONS
- 5 SCHEDULES
- 6 TIE POINTS
- 7 PROJECT LAYOUT
- 8 MISC DETAILS

STANDARDS

- |           |  |
|-----------|--|
| 000001-05 | STANDARD SYMBOLS, ABBREVIATIONS AND PATTERNS                               |
| 701301-02 | LANE CLOSURE, 2L, 2W, SHORT TIME OPERATIONS                                |
| 701306-01 | LANE CLOSURE, 2L, 2W, SLOW MOVING OPERATIONS DAY ONLY, FOR SPEEDS ≥ 45 MPH |
| 701311-02 | LANE CLOSURE, 2L, 2W, MOVING OPERATIONS - DAY ONLY                         |
| 701326-02 | LANE CLOSURE, 2L, 2W, PAVEMENT WIDENING, FOR SPEEDS ≥ 45 MPH               |
| 701901    | TRAFFIC CONTROL DEVICES  |
| 780001-01 | TYPICAL PAVEMENT MARKINGS  |
| 781001-02 | TYPICAL APPLICATIONS RAISED REFLECTIVE PAVEMENT MARKERS                    |



**OTHER PRINCIPAL ARTERIAL**  
2008 ADT = 7,300  
P.V. = 79.2%    S.U. = 13.2%    M.U. = 7.6%

STATE OF ILLINOIS  
DEPARTMENT OF TRANSPORTATION  
DIVISION OF HIGHWAYS

SUBMITTED \_\_\_\_\_ 20 \_\_\_\_\_

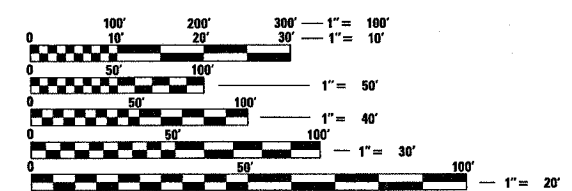
*George E. Brown*  
DEPUTY DIRECTOR OF HIGHWAYS, REGION ENGINEER

*May 9, 2008*  
*Eric E. Harmon*  
SUPERVISOR ENGINEER OF DESIGN AND ENVIRONMENT

*May 9, 2008*  
*Christine M. Reed*  
DIRECTOR OF HIGHWAYS, CHIEF ENGINEER

**PRINTED BY THE AUTHORITY  
OF THE STATE OF ILLINOIS**

MICROFILMED \_\_\_\_\_  
REEL NUMBER \_\_\_\_\_  
AWARDED \_\_\_\_\_  
RESIDENT ENGINEER \_\_\_\_\_  
AS BUILT CHANGES WERE MADE  
ON THE FOLLOWING SHEETS \_\_\_\_\_



FULL SIZE PLANS HAVE BEEN PREPARED USING STANDARD ENGINEERING SCALES. REDUCED SIZED PLANS WILL NOT CONFORM TO STANDARD SCALES. IN MAKING MEASUREMENTS ON REDUCED PLANS, THE ABOVE SCALES MAY BE USED.

J.U.L.I.E.  
JOINT UTILITY LOCATION INFORMATION FOR EXCAVATION  
1-800-892-0123  
OR 811

**PROJECT ENGINEER: JOE KANNEL**  
**PROJECT MANAGER: MICHELE LINDEMANN**  
DISTRICT 3 NO. (815) 434-6131  
**CONTRACT NO. 66765**

GROSS LENGTH = 3577.8 FT. = .677 MI.  
NET LENGTH = 3577.8 FT. = .677 MI.

PLOT DATE = Mar 13, 2008 - 01:25:12 PM  
FILE NAME = c:\projects\ved03408\vrshd.dgn  
PLOT SCALE = 50.0000 / IN.  
USER NAME = carpenterd