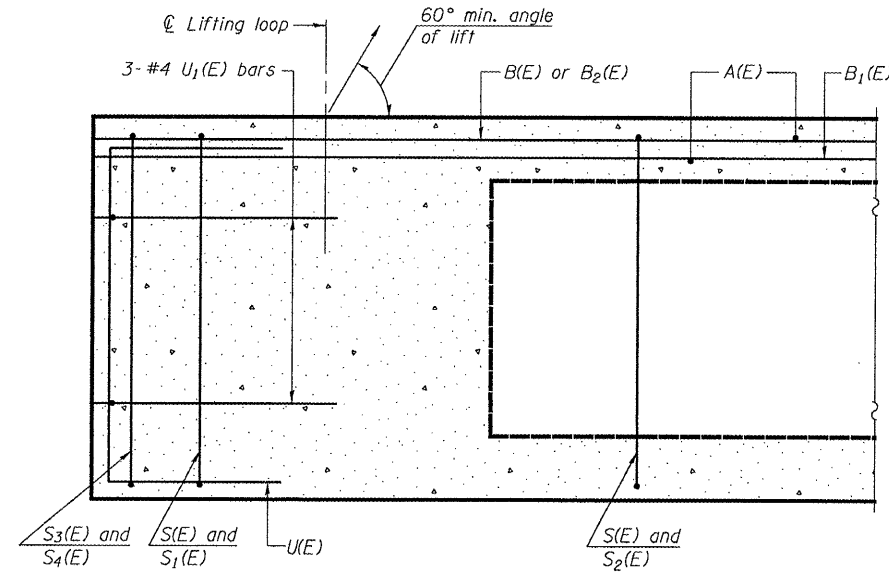
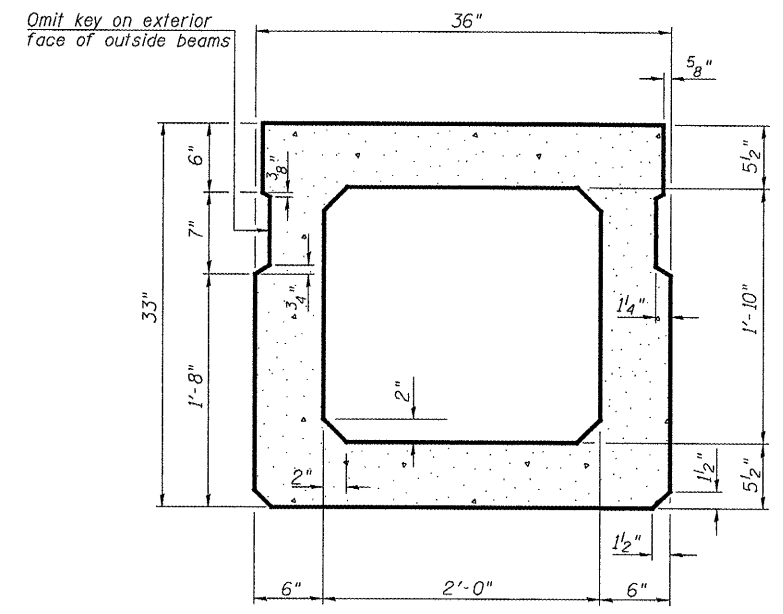


STATE OF ILLINOIS
DEPARTMENT OF TRANSPORTATION

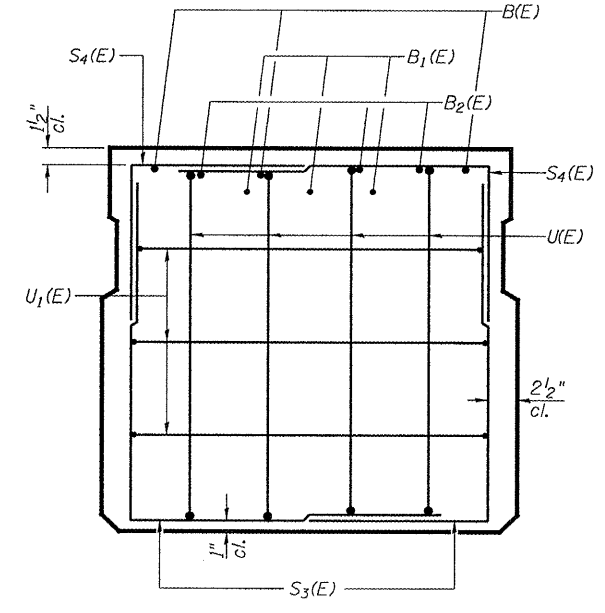
| | | | | | |
|-----------------------|----------|------------------|------------------------------------|-----------|-------------------------|
| ROUTE NO. | SECTION | COUNTY | TOTAL SHEETS | SHEET NO. | SHEET NO. 2 4 SHEETS |
| FAP 71 | * | Ford | 11 | 9 | |
| FED. ROAD DIST. NO. 7 | ILLINOIS | FED. AID PROJECT | Contract Number: 66801 * (115-BR)1 | | |



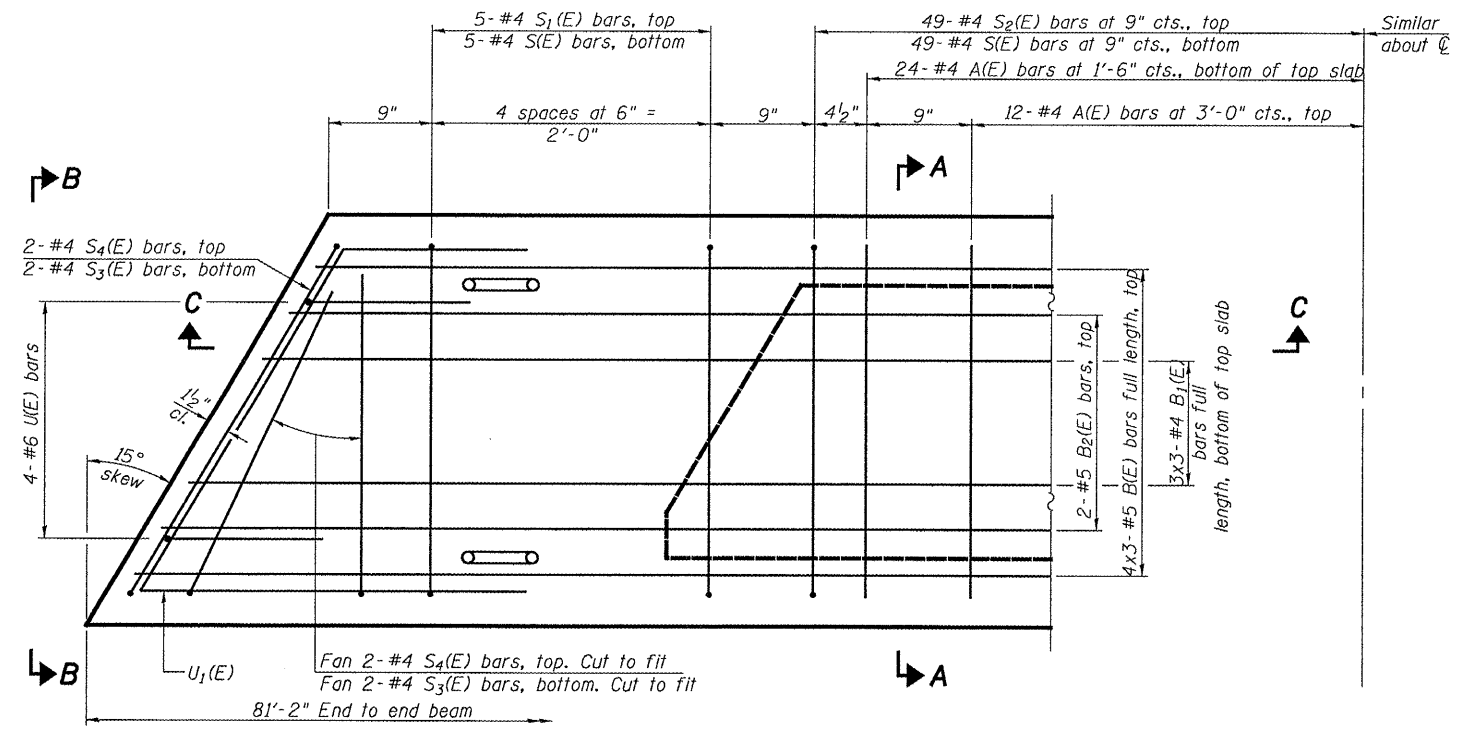
SECTION C-C



SECTION A-A
(Showing dimensions)

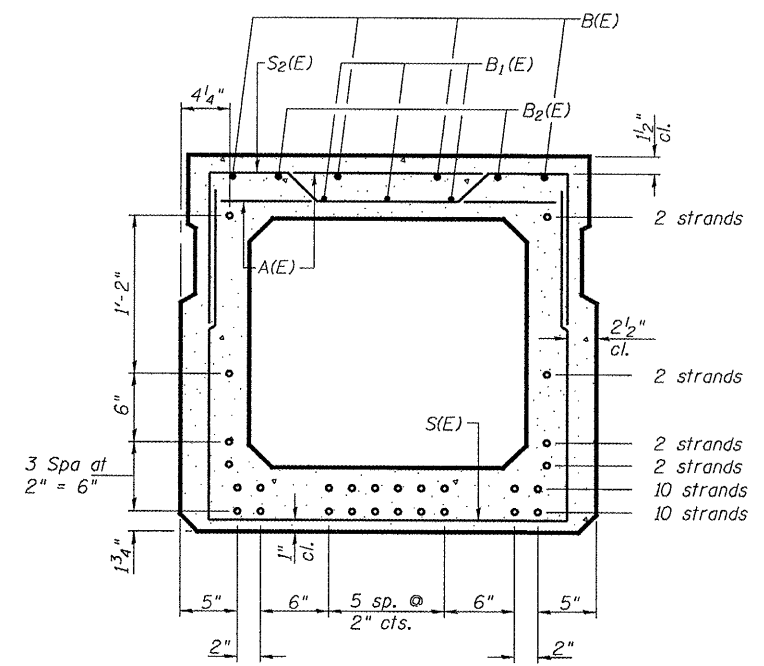


VIEW B-B



PLAN VIEW

Note: Spacing of S(E) and S2(E) bars may be adjusted up to 4" in the immediate area of the transverse tie diaphragms to miss the block outs for the transverse ties.



SECTION A-A
(Showing reinforcement and permissible strand locations)
Note: Place the number of strands specified in each row symmetrically about the centerline of beam in the permissible strand locations shown.

BAR LIST
ONE BEAM ONLY
(For information only)

| Bar | No. | Size | Length | Shape |
|-------|-----|------|--------|-------|
| A(E) | 72 | #4 | 2'-7" | — |
| B(E) | 12 | #5 | 28'-5" | — |
| B1(E) | 9 | #4 | 28'-1" | — |
| B2(E) | 4 | #5 | 16'-3" | — |
| S(E) | 108 | #4 | 7'-5" | U |
| S1(E) | 10 | #4 | 6'-3" | U |
| S2(E) | 98 | #4 | 6'-6" | U |
| S3(E) | 4 | #4 | 5'-1" | U |
| S4(E) | 4 | #4 | 5'-6" | U |
| U(E) | 8 | #6 | 5'-0" | U |
| U1(E) | 6 | #4 | 5'-9" | U |

Notes:
See sheet 3 of 4 for additional details and Bill of Material.
Bars indicated thus 4 x 3-#5 etc. indicates 4 lines of bars with 3 lengths per line.

MINIMUM BAR LAPS

#4 bar = 1'-8"
#5 bar = 2'-2"

BEAM DETAILS
F.A.P. RT. 71
FORD COUNTY
SN 027-0077

| | |
|----------|------------------|
| DESIGNED | A.J.B. |
| CHECKED | A.T.H. |
| DRAWN | Drew Christopher |
| CHECKED | A.J.B. A.T.H. |

MAY 8, 2008
EXAMINED *Carl Perry*
ENGINEER OF STRUCTURAL SERVICES
PASSED *Ralph E. Anderson*
ENGINEER OF BRIDGES AND STRUCTURES