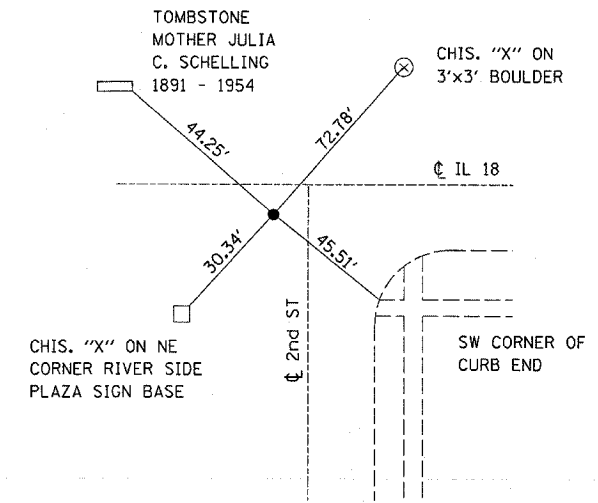
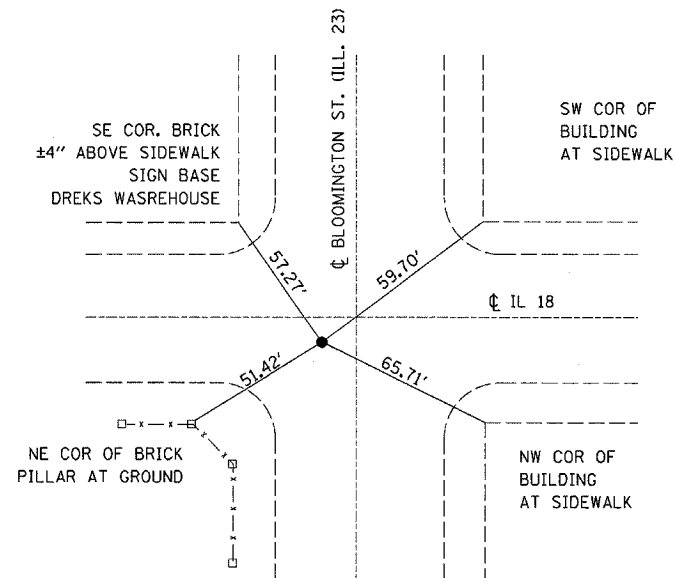


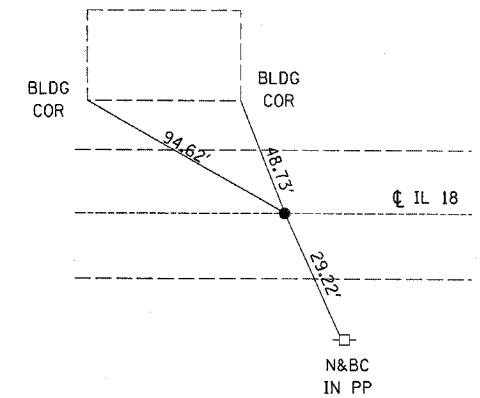
NORTHEAST CORNER
 SEC 34 T31N R3E THIRD PM LASALLE COUNTY
 FOUND BRASS DISK ±2.7' S. OF CL IL 18



N $\frac{1}{4}$ CORNER
 SEC 35 T31N R3E THIRD PM LASALLE COUNTY
 FOUND BRASS DISK ±5.1' S. OF CL IL 18



NORTHEAST CORNER
 SEC 35 T31N R3E THIRD PM LASALLE COUNTY
 FOUND BRASS DISK ± 1.8' S. OF CL IL 18



N $\frac{1}{4}$ CORNER
 SEC 36 T31N R3E THIRD PM LASALLE COUNTY
 SET PK NAIL CL IL 18

FILE NAME =	USER NAME = oarpentardj	DESIGNED -	REVISED -
ci:\projects\4366806\4366806-shr-details.dgn		DRAWN -	REVISED -
		CHECKED -	REVISED -
		DATE -	REVISED -

**STATE OF ILLINOIS
 DEPARTMENT OF TRANSPORTATION**

SURVEY TIES			
SCALE:	SHEET NO.	OF SHEETS	STA. TO STA.

F.A.P. RTE.	SECTION	COUNTY	TOTAL SHEETS	SHEET NO.
653	(8,29)RS-3	LASALLE	12	6
CONTRACT NO. 66806				
FED. ROAD DIST. NO. ILLINOIS FED. AID PROJECT				