

STATE OF ILLINOIS
DEPARTMENT OF TRANSPORTATION

ROUTE NO.	SECTION	COUNTY	SHEET NO.	SHEET NO.
FAP 623	*	GRUNDY	12	3
FED. ROAD DIST. NO. 7	ILLINOIS	FED. AID PROJECT		

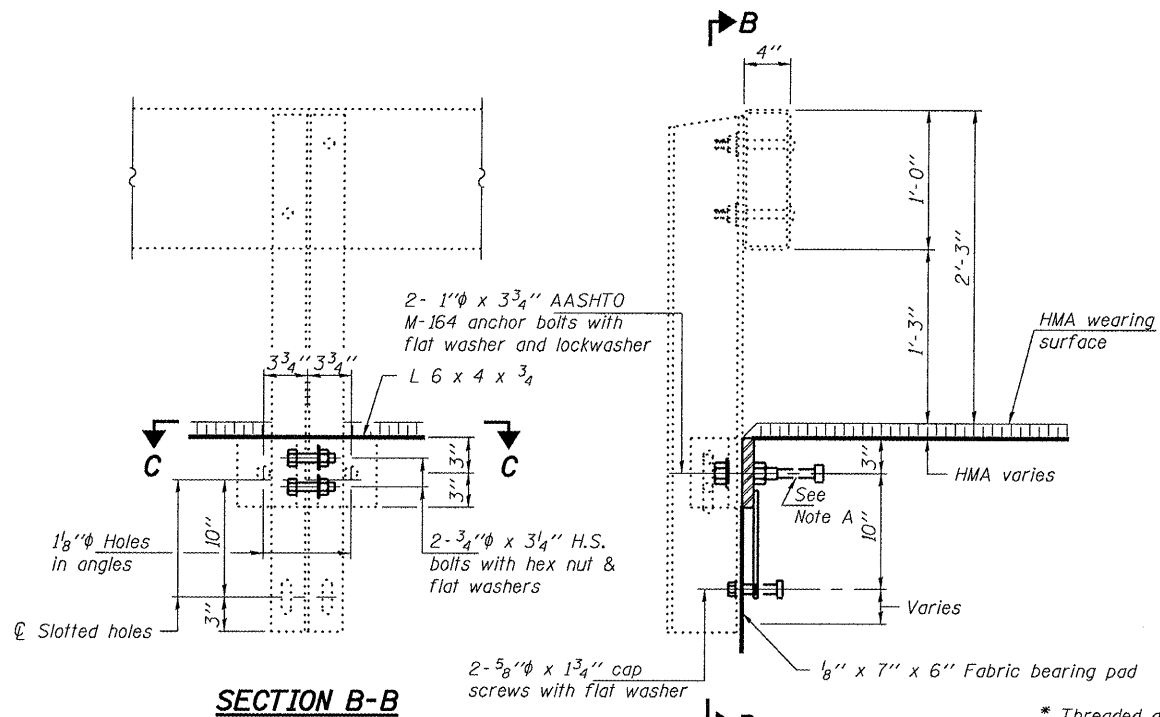
Contract Number: 66808
10-BR-11

Notes:

All field drilled holes shall be coated with an approved zinc rich paint before erection.
All steel rail elements shall be galvanized according to Article 509.05 of the Standard Specifications.
The removal and re-erecting of the existing railing shall be according to Section 509 and 533 of the Standard Specifications.
The cost of removing and re-erecting the existing railing and post with all applicable new hardware shall be included in the cost of Removing and Re-erecting Existing Railing. The work shall be paid for at the contract unit price per foot for Removing and Re-erecting Existing Railing.

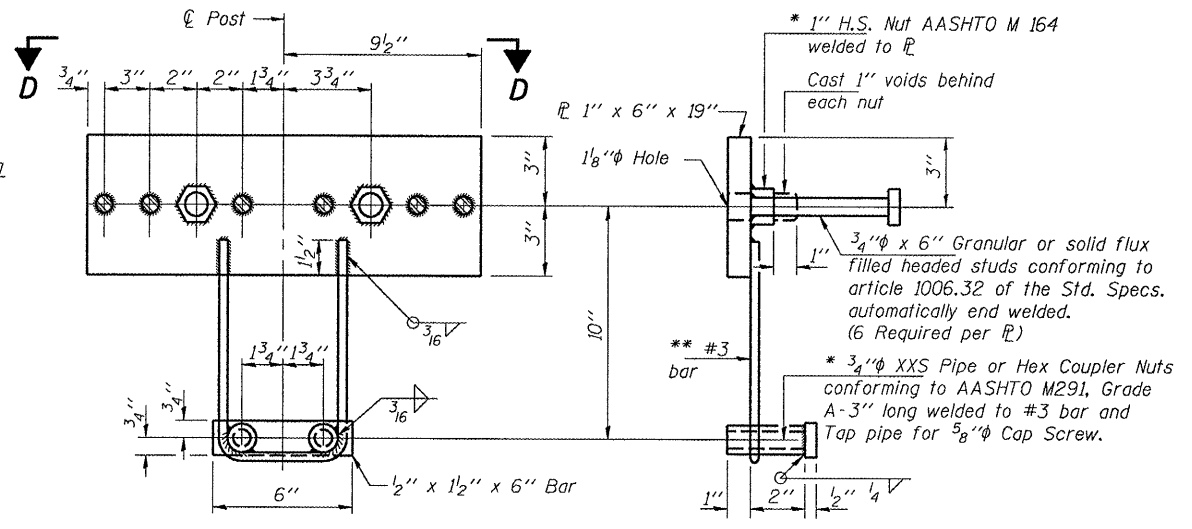
Note A:

The studs of the anchor devices shall be placed below the top reinforcement bars and the outermost longitudinal reinforcement bar shall be placed directly above the studs of the rail post anchor device.

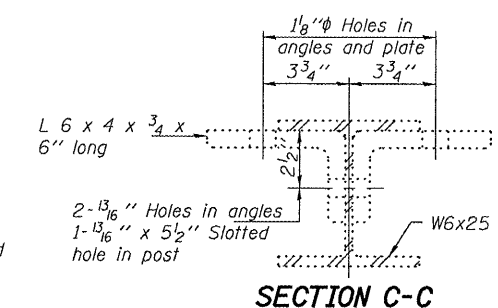


SECTION B-B

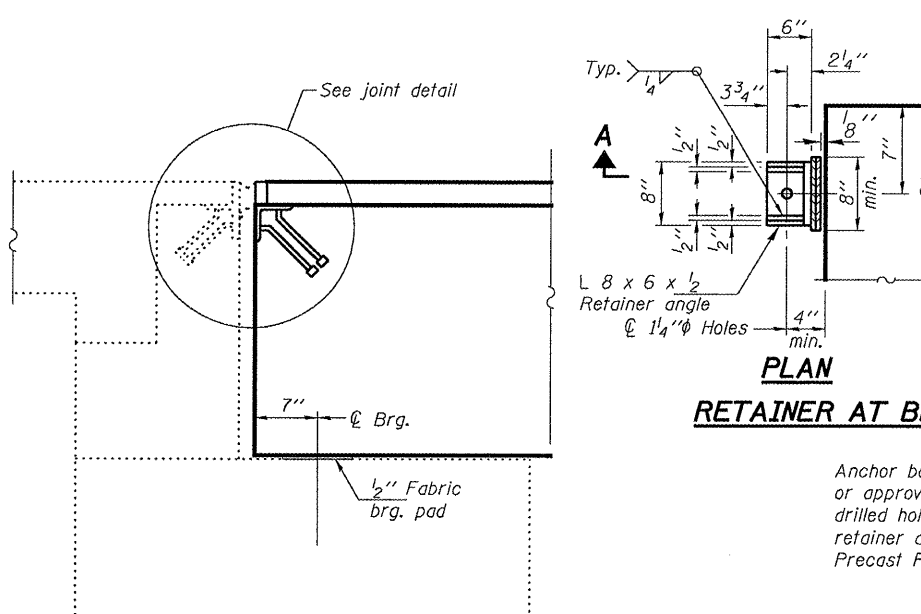
SECTION AT RAILING POST



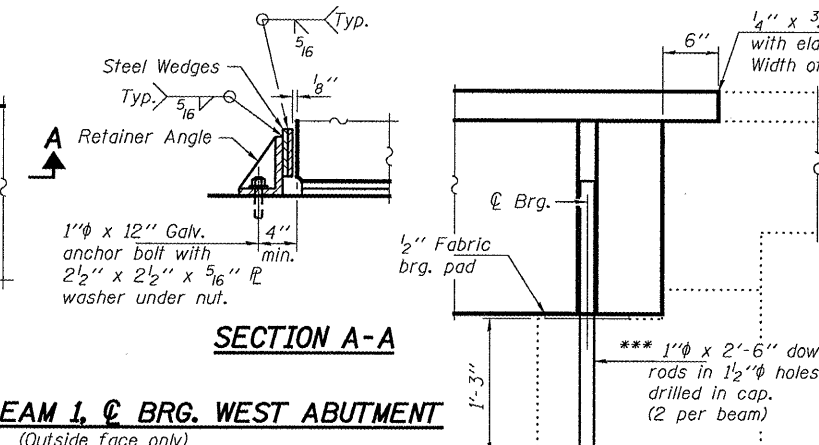
ANCHOR DEVICE



SECTION C-C

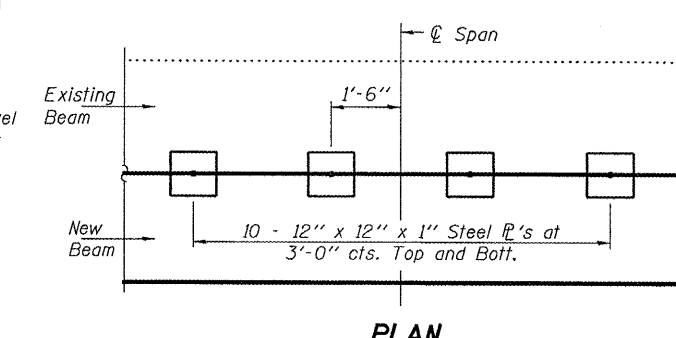


PLAN
RETAINER AT BEAM 1, C Brg. WEST ABUTMENT
(Outside face only)

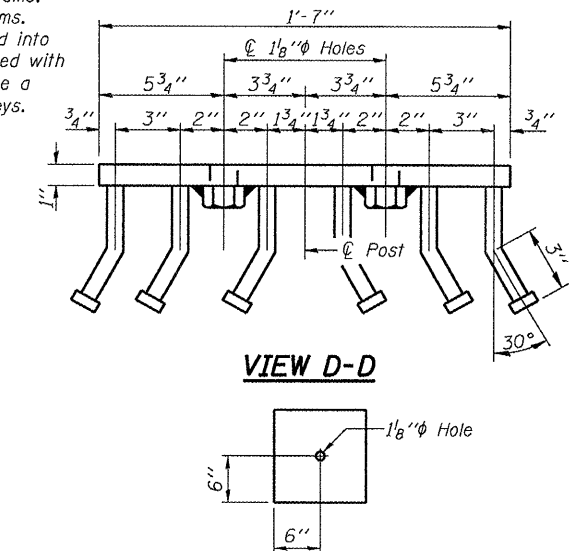


SECTION A-A

TYPICAL EAST
ABUTMENT SECTION



PLAN

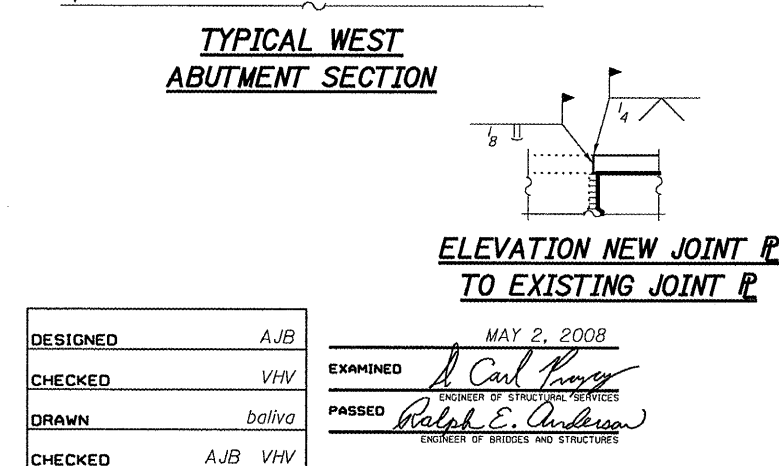


VIEW D-D

CLAMPING PLATE

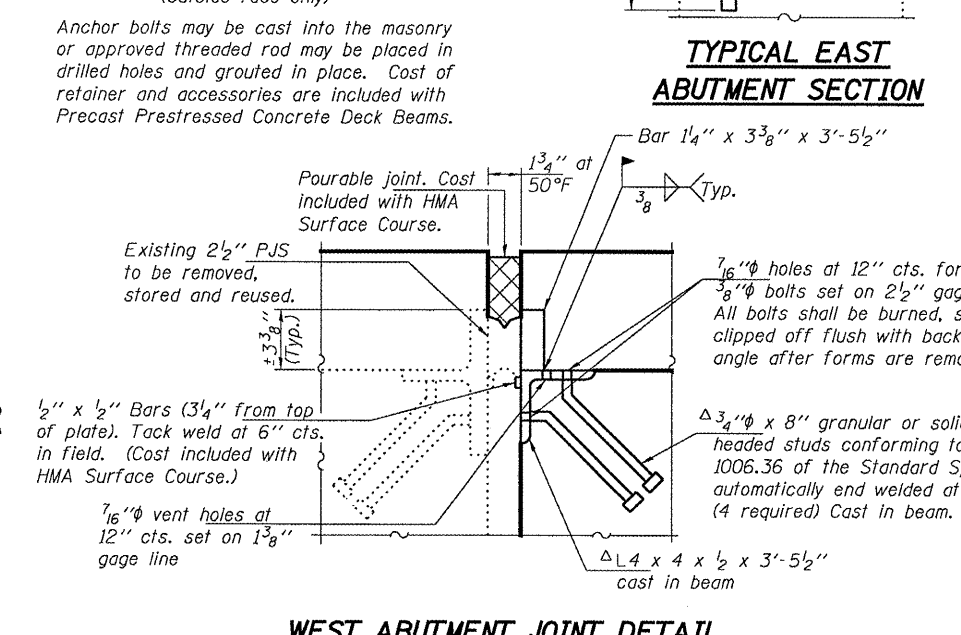
Notes:

See Special Provisions for Stage Construction Precast Prestressed Concrete Deck Beams. See sheet 1 of 4 for Stage traffic lanes. Cost is included with Precast Prestressed Concrete Deck Beams.

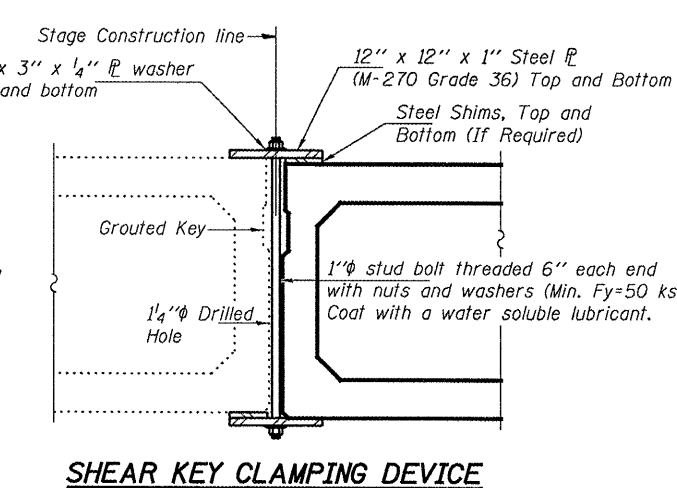


TYPICAL WEST
ABUTMENT SECTION

ELEVATION NEW JOINT P
TO EXISTING JOINT P



WEST ABUTMENT JOINT DETAIL
Δ (Cost included with PPC Deck Beams)



SHEAR KEY CLAMPING DEVICE

REPAIR DETAILS
FAP 623
GRUNDY COUNTY
SN 032-0084

DESIGNED	AJB
CHECKED	VHV
DRAWN	baliva
CHECKED	AJB VHV

MAY 2, 2008
EXAMINED *Carl Perry*
ENGINEER OF STRUCTURAL SERVICES
PASSED *Ralph E. Anderson*
ENGINEER OF BRIDGES AND STRUCTURES