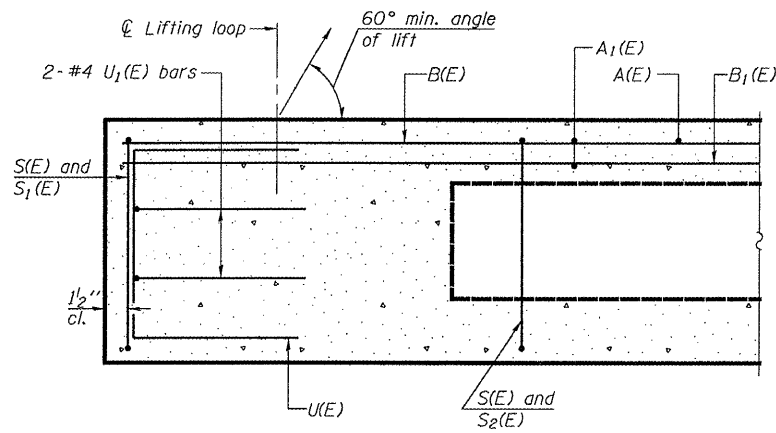


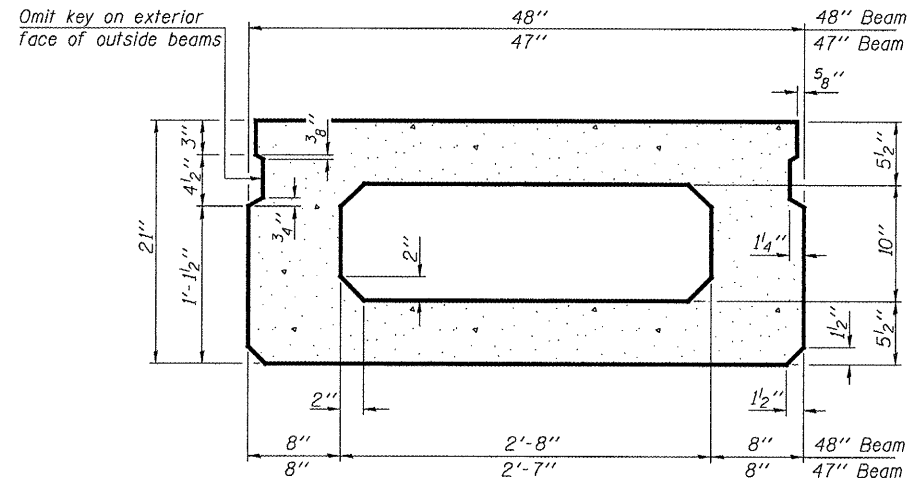
STATE OF ILLINOIS  
DEPARTMENT OF TRANSPORTATION

ROUTE NO.	SECTION	COUNTY	TOTAL SHEETS	SHEET NO.	SHEET NO. 3 6 SHEETS
FA 68		LIVINGSTON	16	13	
FED. ROAD DIST. NO. 7		ILLINOIS		FED. AID PROJECT	

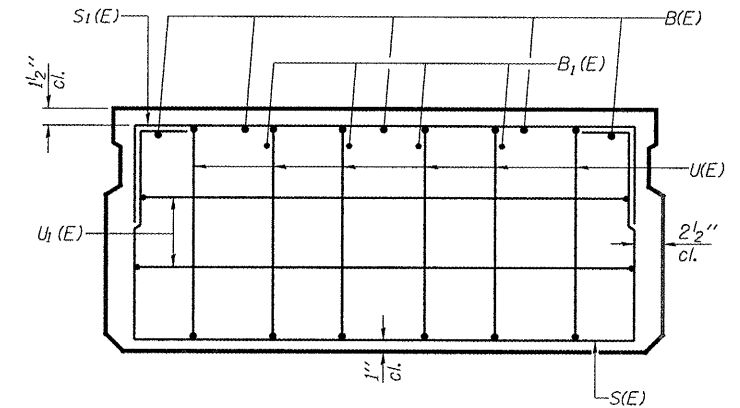
Contract Number: 66810



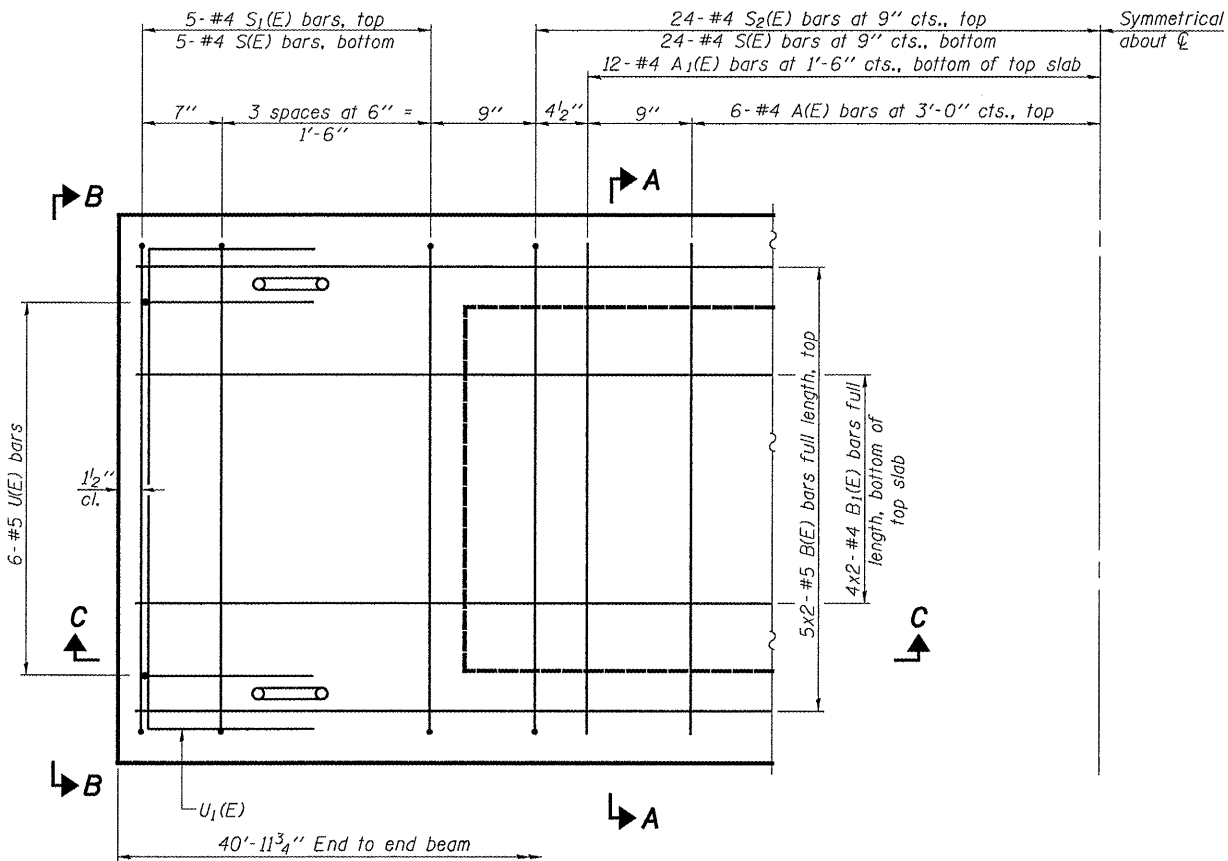
**SECTION C-C**



**SECTION A-A**  
(Showing dimensions)

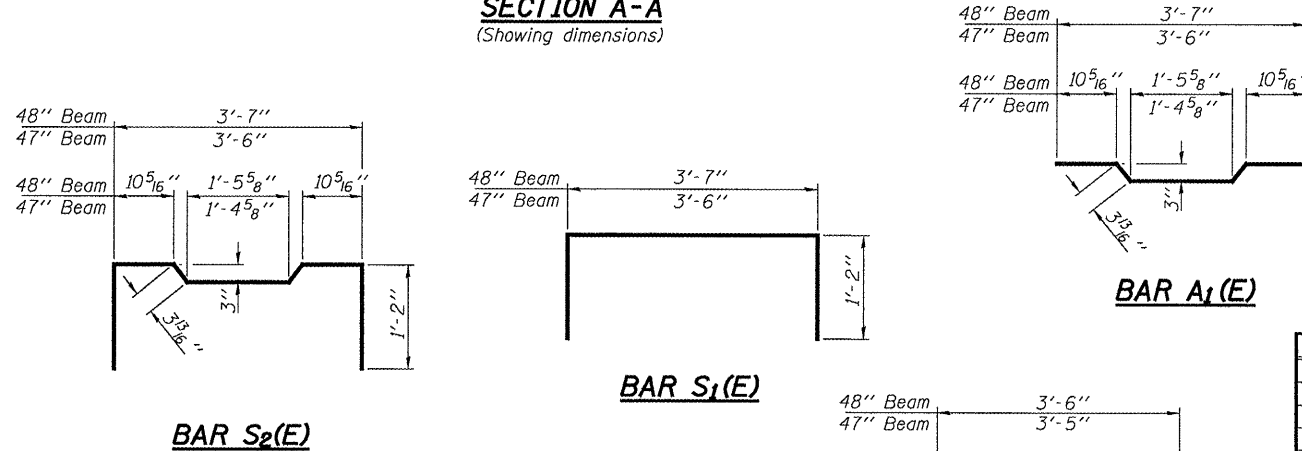


**VIEW B-B**



**PLAN VIEW**

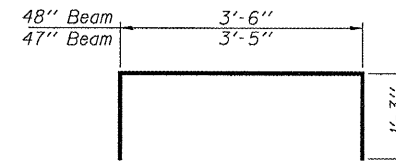
Note: Spacing of S(E) and S2(E) bars may be adjusted up to 4" in the immediate area of the transverse tie diaphragms to miss the block outs for the transverse ties.



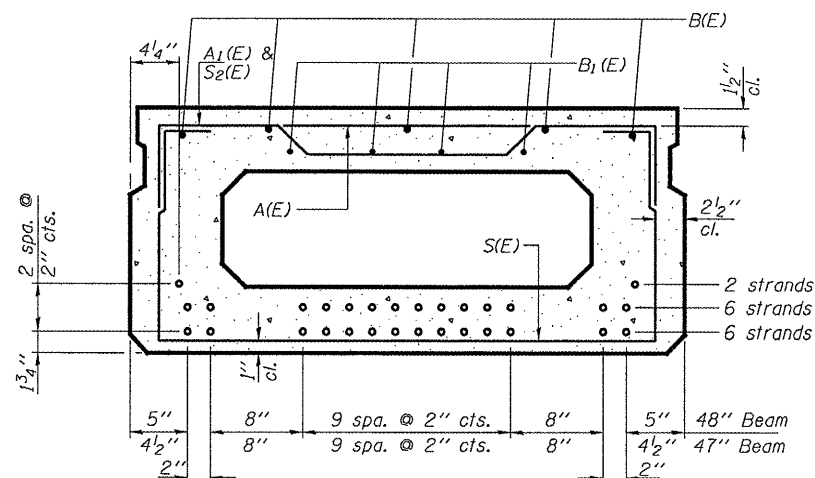
**BAR S2(E)**

**BAR S1(E)**

**BAR A1(E)**



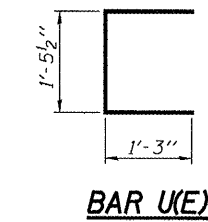
**BAR U1(E)**



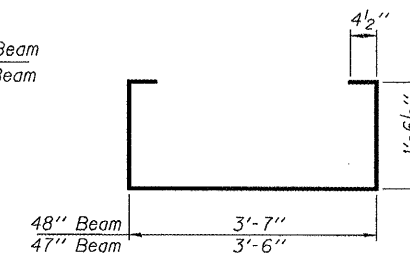
**SECTION A-A**

(Showing reinforcement and permissible strand locations)

Note: Place the number of strands specified in each row symmetrically about the centerline of beam in the permissible strand locations shown.



**BAR U(E)**



**BAR S(E)**

**BAR LIST**  
**ONE 47" BEAM ONLY**  
(For Information Only)

Bar	No.	Size	Length	Shape
A(E)	12	#4	3'-6"	—
A1(E)	24	#4	3'-9"	—
B(E)	10	#5	21'-6"	—
B1(E)	8	#4	21'-3"	—
S(E)	58	#4	7'-4"	⌋
S1(E)	10	#4	5'-10"	⌋
S2(E)	48	#4	6'-1"	⌋
U(E)	12	#5	4'-0"	⌋
U1(E)	4	#4	5'-11"	⌋

**BAR LIST**  
**ONE 48" BEAM ONLY**  
(For Information Only)

Bar	No.	Size	Length	Shape
A(E)	12	#4	3'-7"	—
A1(E)	24	#4	3'-10"	—
B(E)	10	#5	21'-6"	—
B1(E)	8	#4	21'-3"	—
S(E)	58	#4	7'-5"	⌋
S1(E)	10	#4	5'-11"	⌋
S2(E)	48	#4	6'-2"	⌋
U(E)	12	#5	4'-0"	⌋
U1(E)	4	#4	6'-0"	⌋

Bars indicated thus 4 x 2-#5 etc. indicates 4 line of bars with 2 lengths per line.

Note: See sheet 4 of 6 for additional details and Bill of Material.

**BEAM DETAILS**  
**FA 68 OVER SHORT POINT CREEK**  
**LIVINGSTON COUNTY**  
**SN 053-0161**

DESIGNED	AJB
CHECKED	VHV
DRAWN	Steffen
CHECKED	AJB VHV

MAY 2, 2008  
EXAMINED *Carl Krueger*  
ENGINEER OF STRUCTURAL SERVICES  
PASSED *Ralph E. Anderson*  
ENGINEER OF BRIDGES AND STRUCTURES