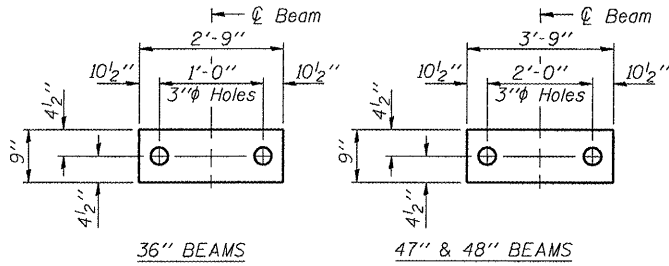


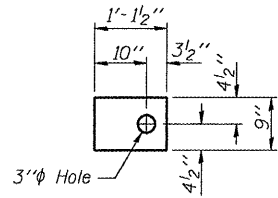
STATE OF ILLINOIS
DEPARTMENT OF TRANSPORTATION

ROUTE NO.	SECTION	COUNTY	SHEET NO.	SHEET NO.
FA 68	*	LIVINGSTON	16	14
Contract Number: 66810				

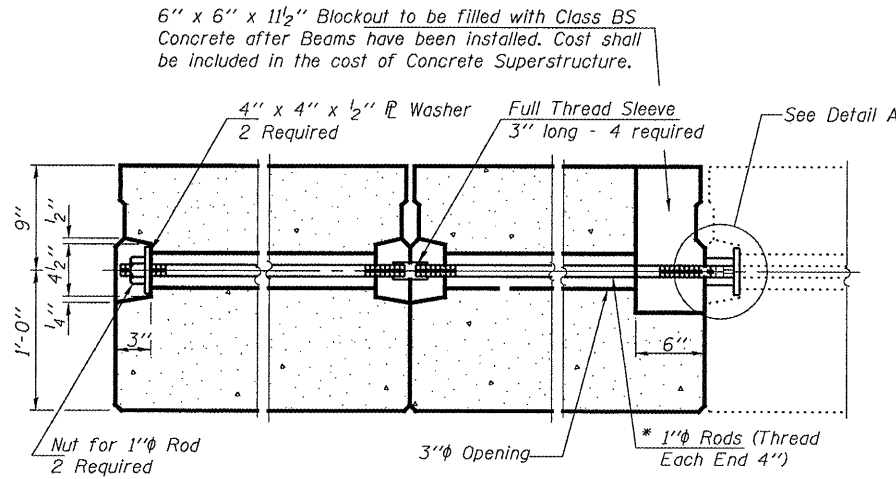
SHEET NO. 4
6 SHEETS



FABRIC BEARING PADS

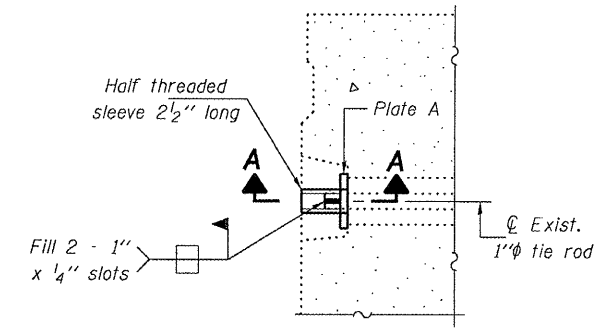


FABRIC ADJUSTING SHIM

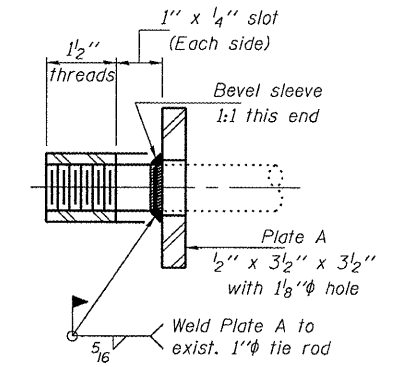


TYPICAL TRANSVERSE TIE ASSEMBLY

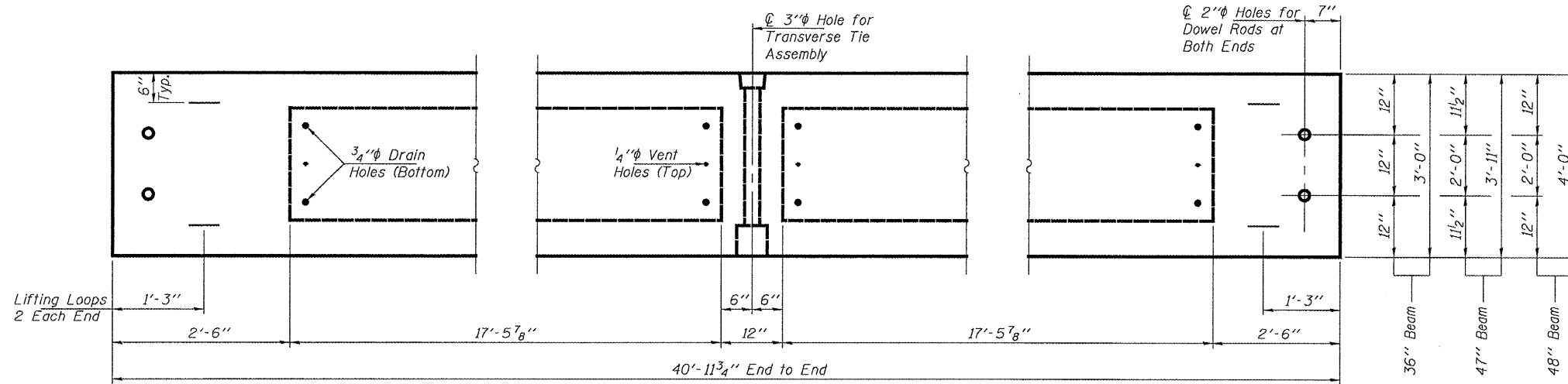
* 3'-0" for 36" Beams (2 Req'd)
3'-11" for 47" Beams (2 Req'd)
4'-0" for 48" Beams (2 Req'd)



DETAIL A



SECTION A-A
(4 Required)



BEAM PLAN

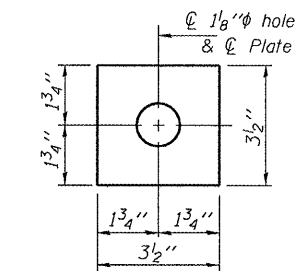
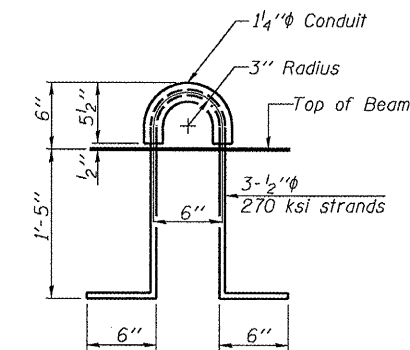


PLATE A
(4 Required)

BILL OF MATERIAL

Precast Prestressed Conc. Deck Bms. (21" depth)	Sq. Ft.	894.7
---	---------	-------



LIFTING LOOP DETAIL

BEAM DETAILS
FA 68 OVER SHORT POINT CREEK
LIVINGSTON COUNTY
SN 053-0161

NOTES

Prestressing steel shall be uncoated high strength, low relaxation 7-wire strand, Grade 270. The nominal diameter shall be 1/2" and the nominal cross-sectional area shall be 0.153 sq. in. The 1" rods in the transverse tie assembly shall be tightened to a snug fit and the threads set. Pockets on exterior faces of bridge shall be filled with grout after transverse tie assembly is in place. Reinforcement bars shall conform to ASTM A 706 (IL MOD), Grade 60. (See Special Provisions) Two 1/8" fabric adjusting shims of the dimensions shown shall be provided for each bearing pad location. A minimum 2 1/2" lifting pin shall be used to engage the lifting loops during handling. Corrosion Inhibitor, per Article 1020.05(b)(12) and 1021.06 of the Standard Specifications, shall be used in the concrete for precast prestressed concrete deck beams. Compressive strength of prestressed concrete, f'c, shall be 6000 psi. Compressive strength of prestressed concrete at release, f'ci, shall be 5000 psi.

DESIGNED	AJB
CHECKED	VHV
DRAWN	Steffen
CHECKED	AJB VHV

MAY 2, 2008
EXAMINED *Carl Perry*
ENGINEER OF STRUCTURAL SERVICES
PASSED *Ralph E. Anderson*
ENGINEER OF BRIDGES AND STRUCTURES