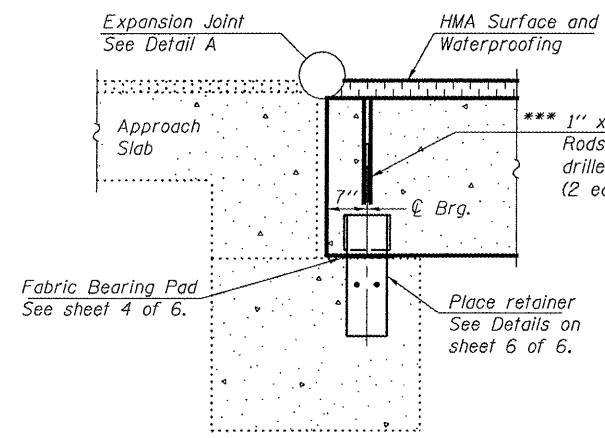


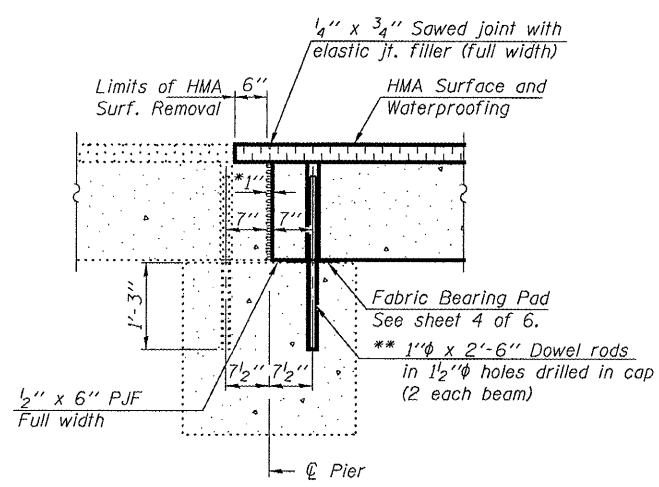
STATE OF ILLINOIS  
DEPARTMENT OF TRANSPORTATION

ROUTE NO.	SECTION	COUNTY	DIST. SHEETS	SHEET NO.	SHEET NO. 5 6 SHEETS
FA 68	*	LIVINGSTON	16	15	
Contract Number: 66810					



**SECTION THRU ABUTMENT**

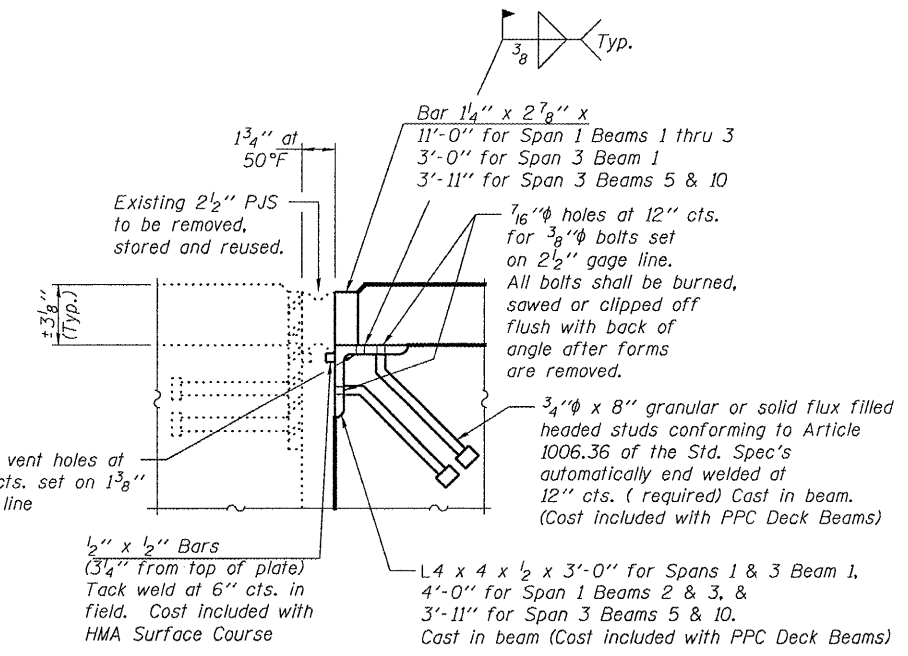
\*\*\* No grout to be used after placement of dowel rods. (Abutment ends only)



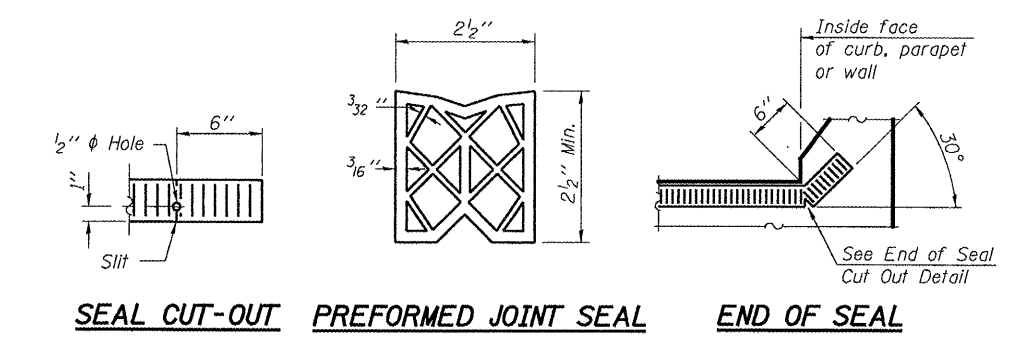
**SECTION THRU FIXED PIER**

- \* 1" Jt. shall be filled with non-shrink grout. 1" dimension may vary to accommodate tolerance in beam lengths.
- \*\* Existing dowel rods are to be burned off, ground flush, and sealed with epoxy prior to placement of new beams. Cost included in Removal of Existing PPC Deck Beams. After beams have been erected holes shall be drilled into cap and dowel rods placed. Dowel holes shall be filled with non-shrink grout to top of beam and allowed to cure a minimum of 24 hours prior to grouting the shear keys.

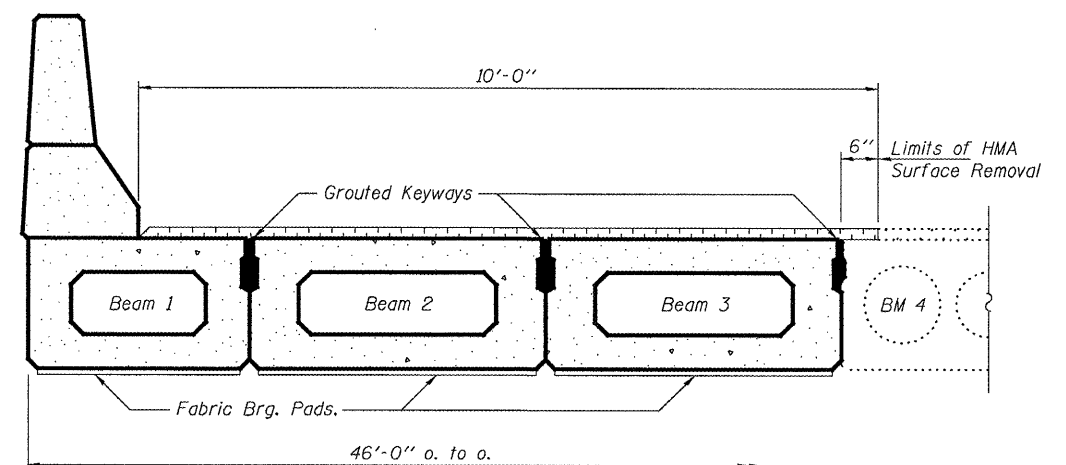
Notes :  
All horizontal dimensions are at right angles to beam ends.  
Hatched area to be poured after beams are in place.



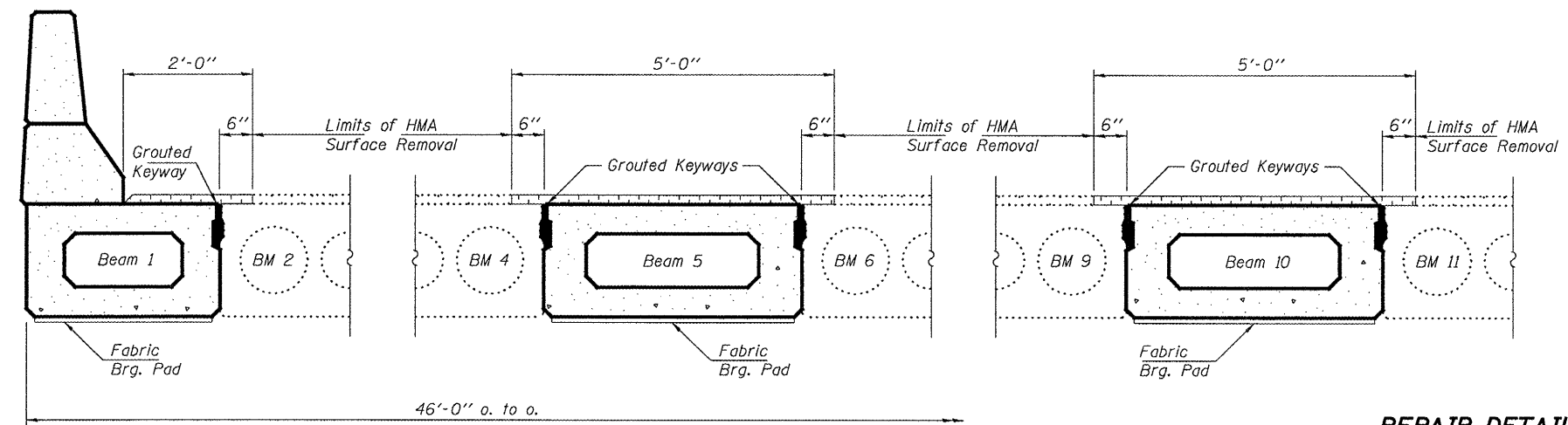
**DETAIL A**



**FOR INFORMATION ONLY**  
Existing Preformed Joint Seal to be removed and installed. Cost included with HMA Surface Course.



**SPAN 1 PARTIAL CROSS SECTION**



**SPAN 3 PARTIAL CROSS SECTION**

DESIGNED	AJB
CHECKED	VHV
DRAWN	Steffen
CHECKED	AJB VHV

MAY 2, 2008  
EXAMINED *Carl Perry*  
PASSED *Ralph E. Anderson*  
ENGINEER OF STRUCTURAL SERVICES  
ENGINEER OF BRIDGES AND STRUCTURES

**REPAIR DETAILS**  
**FA 68 OVER SHORT POINT CREEK**  
**LIVINGSTON COUNTY**  
**SN 053-0161**