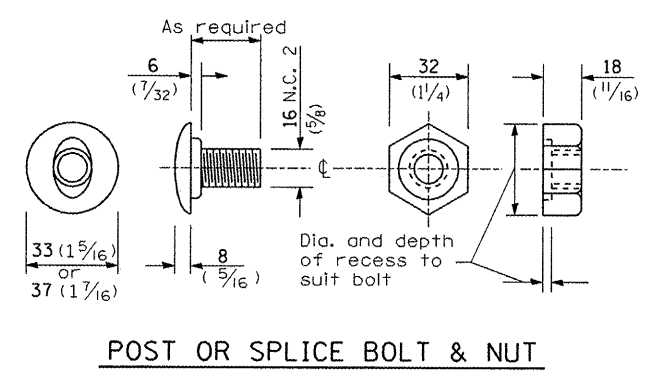


Plate A shall be placed between rail element and block-out at non-splice mounting points only when steel block-outs are used.

PLATE A



FILE NAME =	USER NAME = schwenker	DESIGNED -	REVISED -
c:\projects\d366812\d366812-sht-details.dgn		DRAWN -	REVISED -
		CHECKED -	REVISED -
		DATE -	REVISED -

**STATE OF ILLINOIS
DEPARTMENT OF TRANSPORTATION**

**PRE-MGS EFFECTIVE 4-1-06
STEEL PLATE BEAM GUARDRAIL
STANDARD 630001-06**

(Sheet 2 of 4)

SCALE: SHEET NO. OF SHEETS STA. TO STA.

• D-3 HIGHWAY DAMAGE REPAIR 2009			
F.A. RTE.	SECTION	COUNTY	TOTAL SHEETS NO.
VAR.	•	VAR.	36 17
FED. ROAD DIST. NO. ILLINOIS FED. AID PROJECT			CONTRACT NO. 66812