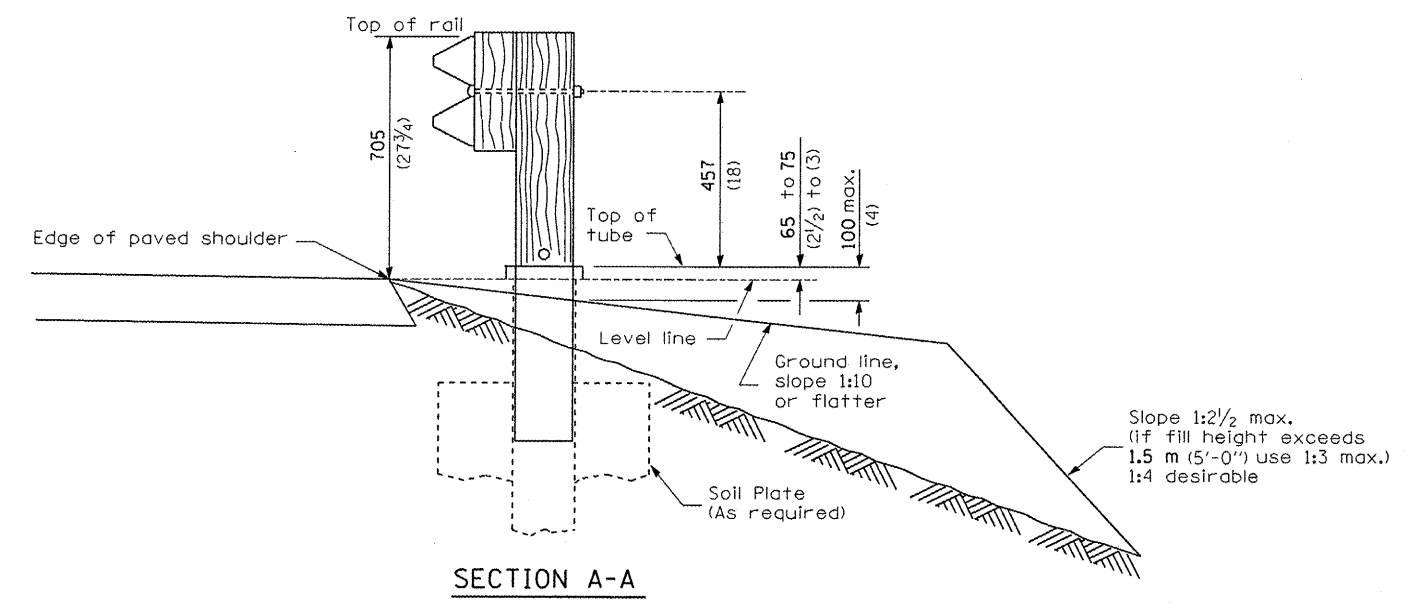


**SHOULDER WIDENING TRANSITION
FOR TANGENT TERMINAL**



SECTION A-A

GENERAL NOTES

50:1 Taper required so the guardrail head will not encroach on the shoulder.

All slope ratios are expressed as units of vertical displacement to units of horizontal displacement (V:H).

All dimensions are in millimeters (inches) unless otherwise shown.

FILE NAME =	USER NAME = schwankeng	DESIGNED -	REVISED -
c:\projects\d366812\d366812-sht-detail1.dgn		DRAWN -	REVISED -
	PLOT SCALE = 103.1218 / IN.	CHECKED -	REVISED -
	PLOT DATE = May 21, 2008 - 03:37:20 PM	DATE -	REVISED -

**STATE OF ILLINOIS
DEPARTMENT OF TRANSPORTATION**

**PRE-MGS EFFECTIVE 4-1-06
SHOULDER WIDENING FOR TYPE 1 (SPECIAL) GUARDRAIL TERMINALS
STANDARD 630301-03** (Sheet 1 of 2)

F.A. RTE.	SECTION	COUNTY	TOTAL SHEETS	SHEET NO.
VAR.		VAR.	36	22
FED. ROAD DIST. NO.			ILLINOIS FED. AID PROJECT	
SCALE:			SHEET NO. OF SHEETS STA. TO STA.	

• D-3 HIGHWAY DAMAGE REPAIR 2009

CONTRACT NO. 66812