

| | | | | |
|---------------------|----------|--------------------|--------------|-----------|
| F.A.S. RTE. | SECTION | COUNTY | TOTAL SHEETS | SHEET NO. |
| 370 | (102BR) | LIVINGSTON | 13 | 1 |
| FED. ROAD DIST. NO. | ILLINOIS | CONTRACT NO. 66814 | | |

STATE OF ILLINOIS
DEPARTMENT OF TRANSPORTATION
DIVISION OF HIGHWAYS

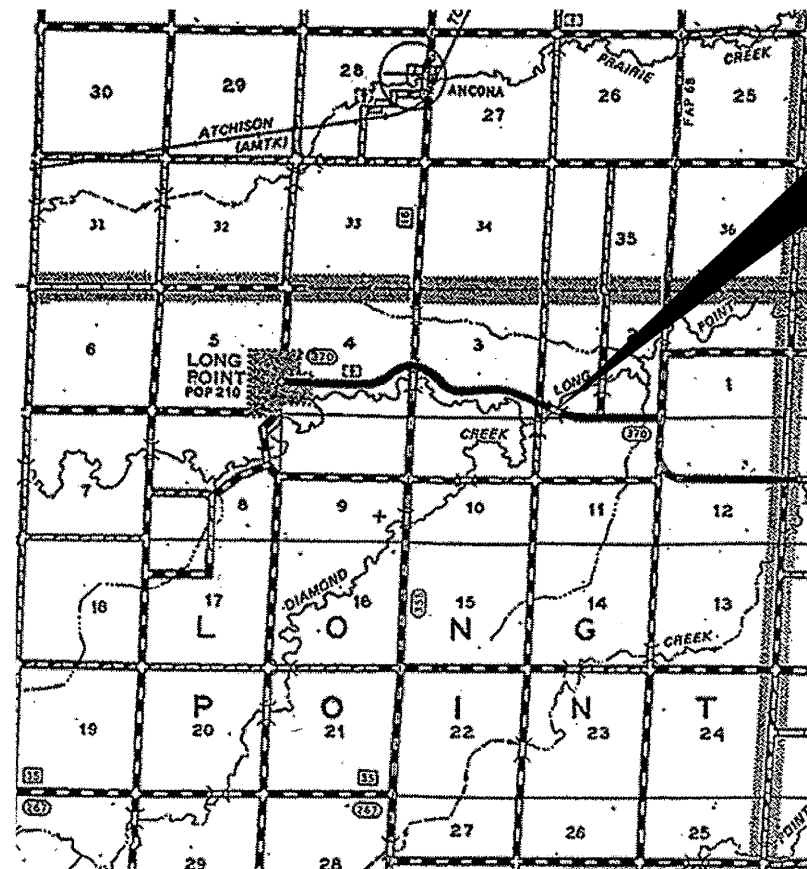
**PROPOSED
HIGHWAY PLANS**

FAS ROUTE 370 (LONG POINT ROAD)
SECTION (102BR)

LIVINGSTON COUNTY

C-93-098-08

DECK BEAM REPLACEMENT



PROJECT LOCATION
SN 053-0157
0.93 MILES WEST OF IL 23

LOCATION MAP

NOT TO SCALE
POINT LOCATION

INDEX OF SHEETS

1. COVER SHEET
2. GENERAL NOTES
3. SUMMARY OF QUANTITIES
4. TYPICAL SECTIONS
- 5 - 7. STAGING DETAILS
8. TEMPORARY CONCRETE BARRIER
9. TYPICAL PAVEMENT MARKING
10. PLAN AND ELEVATION
- 11 - 12. BEAM DETAILS
13. RAIL DETAILS

STANDARDS

- | | |
|-----------|--|
| 000001-05 | STANDARD SYMBOLS, ABBREVIATIONS AND PATTERNS |
| 001006 | DECIMAL OF AN INCH AND OF A FOOT |
| 482011-03 | HMA SHOULDER STRIPS/SHOULDERS WITH RS OR WIDENING & RS PROJECTS |
| 701001-01 | OFF-ROAD OPERATIONS 2L, 2W, MORE THAN 4.5 m (15') AWAY |
| 701006-02 | OFF-ROAD OPERATIONS 2L, 2W, 4.5 m (15') TO 600 mm (24") FROM PAVEMENT EDGE |
| 701011-01 | OFF-ROAD MOVING OPERATIONS 2L, 2W, DAY ONLY |
| 701201-02 | LANE CLOSURE, 2L, 2W, DAY ONLY, FOR SPEEDS ≥ 45 MPH |
| 701206-01 | LANE CLOSURE, 2L, 2W, NIGHT ONLY, FOR SPEEDS ≥ 45 MPH |
| 701301-02 | LANE CLOSURE, 2L, 2W, SHORT TIME OPERATIONS |
| 701311-02 | LANE CLOSURE, 2L, 2W, MOVING OPERATIONS - DAY ONLY |
| 701321-09 | LANE CLOSURE, 2L, 2W, BRIDGE REPAIR WITH BARRIER |
| 701326-02 | LANE CLOSURE, 2L, 2W, PAVEMENT WIDENING, FOR SPEEDS ≥ 45 MPH |
| 701901 | TRAFFIC CONTROL DEVICES |
| 704001-04 | TEMPORARY CONCRETE BARRIER |

MICROFILMED _____
REEL NUMBER _____
AWARDED _____
RESIDENT ENGINEER _____
AS BUILT CHANGES WERE MADE
ON THE FOLLOWING SHEETS _____

J.U.L.I.E.
JOINT UTILITY LOCATION INFORMATION FOR EXCAVATION
1-800-892-0123
OR 811

PROJECT ENGINEER : JOE KANNEL
UNIT CHIEF : RON WOODSHANK

CONTRACT NO. 66814



LOCATION OF SECTION INDICATED THUS: - ■ -
FUNCTIONAL CLASSIFICATION
RURAL MAJOR ARTERIAL
F.A.S. ROUTE 370
(LONG POINT ROAD)
2004 ADT = 450

STATE OF ILLINOIS
DEPARTMENT OF TRANSPORTATION
DIVISION OF HIGHWAYS
SUBMITTED 3/27 20 08
George E. ...
DEPUTY DIRECTOR OF HIGHWAYS, REGION ENGINEER
May 9, 20 08
Eric E. ...
ENGINEER OF DESIGN AND ENVIRONMENT
May 9, 20 08
Christine M. Reed
DIRECTOR OF HIGHWAYS, CHIEF ENGINEER

**PRINTED BY THE AUTHORITY
OF THE STATE OF ILLINOIS**