

NEW SLAB

EXISTING SLAB

SECTIONS THRU SLAB

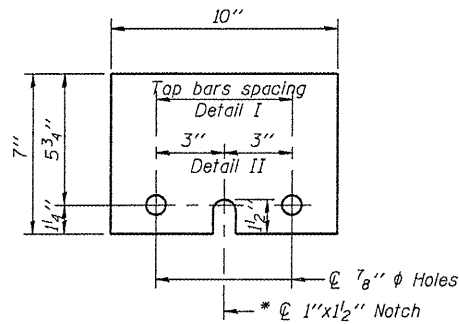
NOTES

Detail I - With Bar Splicer or Couplers:
Connect one (1) 1"x7"x10" steel plate to the top layer of couplers with 2-5/8" φ bolts screwed to coupler at approximate center of each barrier panel.

Detail II - With Extended Reinforcement Bars:
Connect one (1) 1"x7"x10" steel plate to the concrete slab with 2-5/8" φ Expansion Anchors or cast in place inserts spaced between the top layer of reinforcement at approximate center of each barrier panel.

Cost of anchorage is included with Temporary Concrete Barrier.

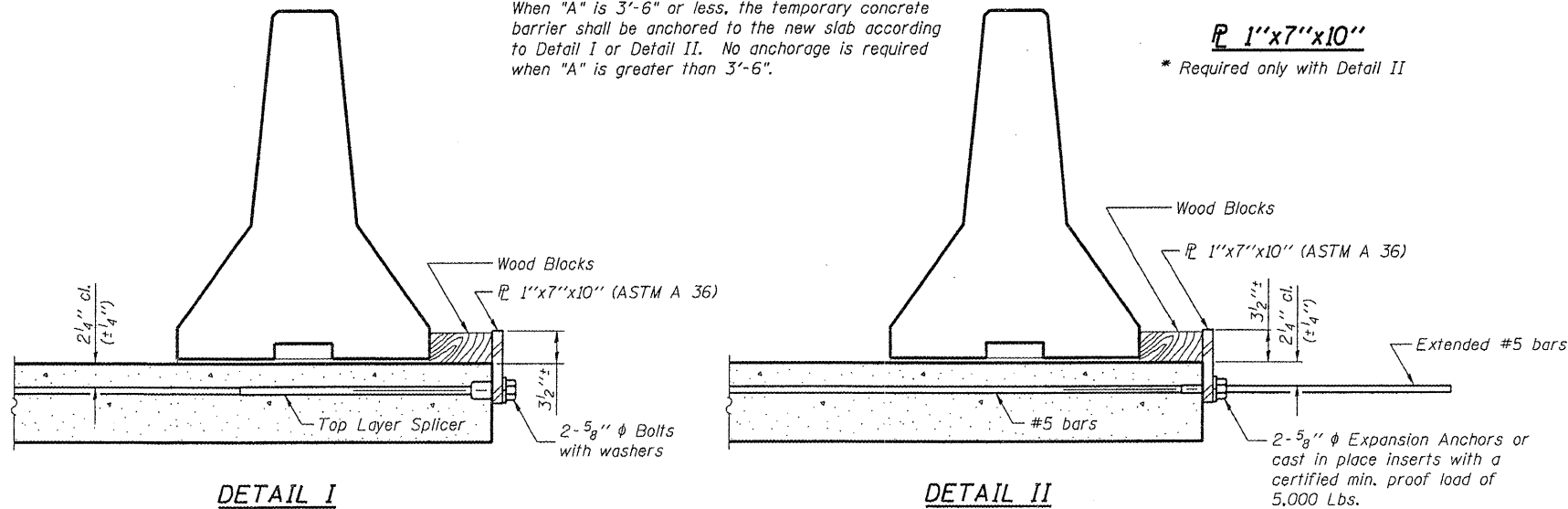
Drill 1/4" φ Holes in existing slab for 1" φ x 10" dowel bars. Traffic side only. Cost included with Temporary Concrete Barrier.



1" x 7" x 10"

* Required only with Detail II

When "A" is 3'-6" or less, the temporary concrete barrier shall be anchored to the new slab according to Detail I or Detail II. No anchorage is required when "A" is greater than 3'-6".

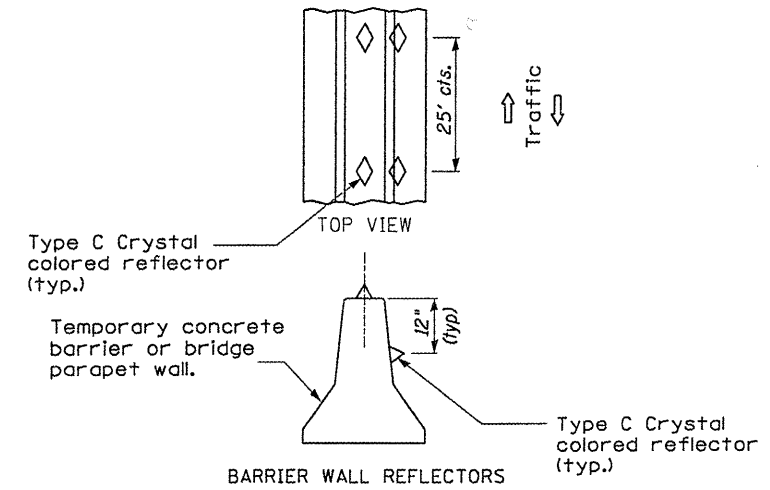


DETAIL I

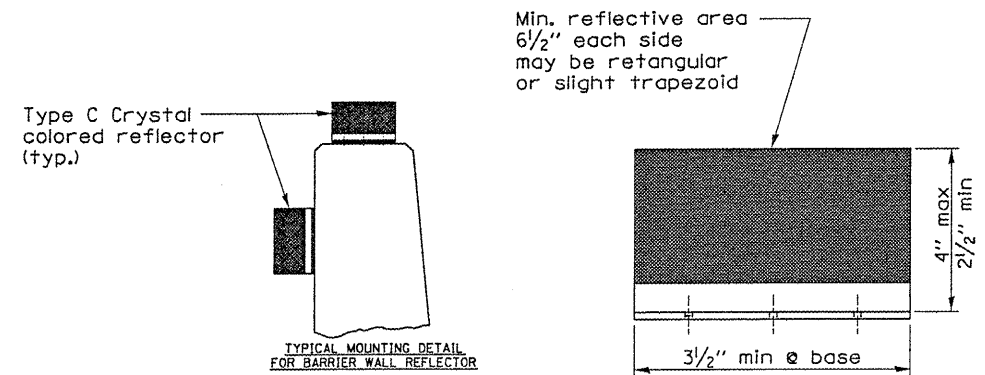
The 1"x7"x10" Plate shall not be removed until Stage II Construction forms and reinforcement bars are in place.

DETAIL II

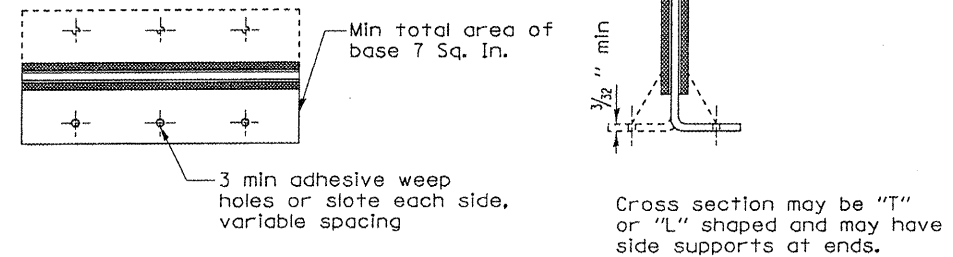
The 1"x7"x10" Plate shall not be removed until Stage II Construction forms and all reinforcement bars are in place and the concrete is ready to be placed.



DETAIL A



TYPICAL MOUNTING DETAIL FOR BARRIER WALL REFLECTOR



TYPE C REFLECTOR

FILE NAME =	USER NAME = woodshankr1	DESIGNED - RLW	REVISED - ---
c:\projects\deck beam repl 08\sn 053-0157.dgn		DRAWN - RLW	REVISED - ---
PLOT SCALE = 103.4829 / IN.		CHECKED - ---	REVISED - ---
PLOT DATE = Mar 25, 2008 - 03:31:37 PM		DATE - ---	REVISED - ---

STATE OF ILLINOIS
DEPARTMENT OF TRANSPORTATION

TEMPORARY CONCRETE BARRIER

SCALE: SHEET NO. 1 OF 1 SHEETS STA. TO STA.

F.A.S. RTE. 370	SECTION (102BR)	COUNTY LIVINGSTON	TOTAL SHEETS 13	SHEET NO. 8
CONTRACT NO. 66814				
FED. ROAD DIST. NO. ILLINOIS FED. AID PROJECT				