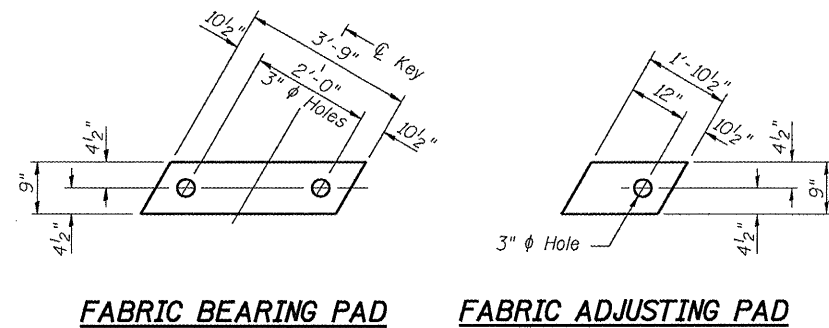
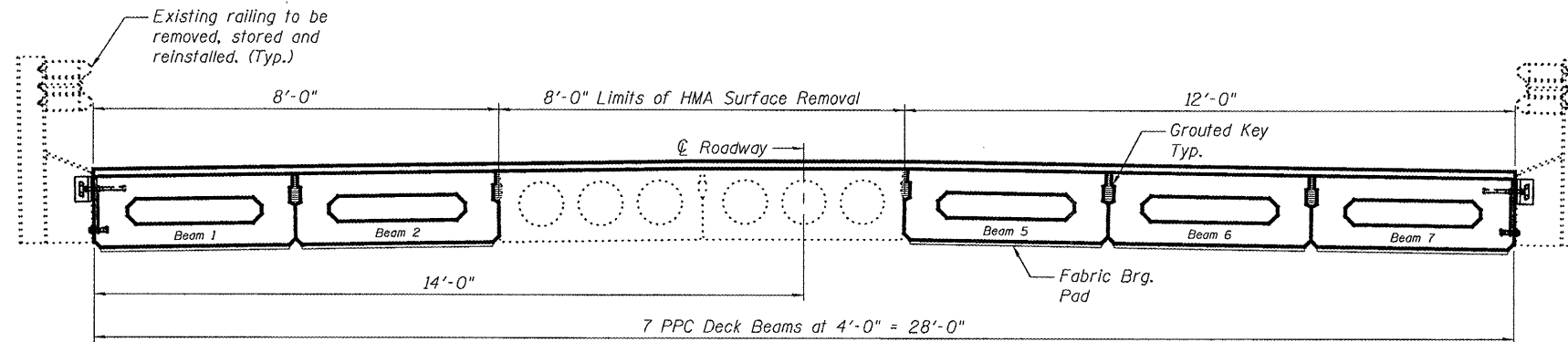


STATE OF ILLINOIS
DEPARTMENT OF TRANSPORTATION

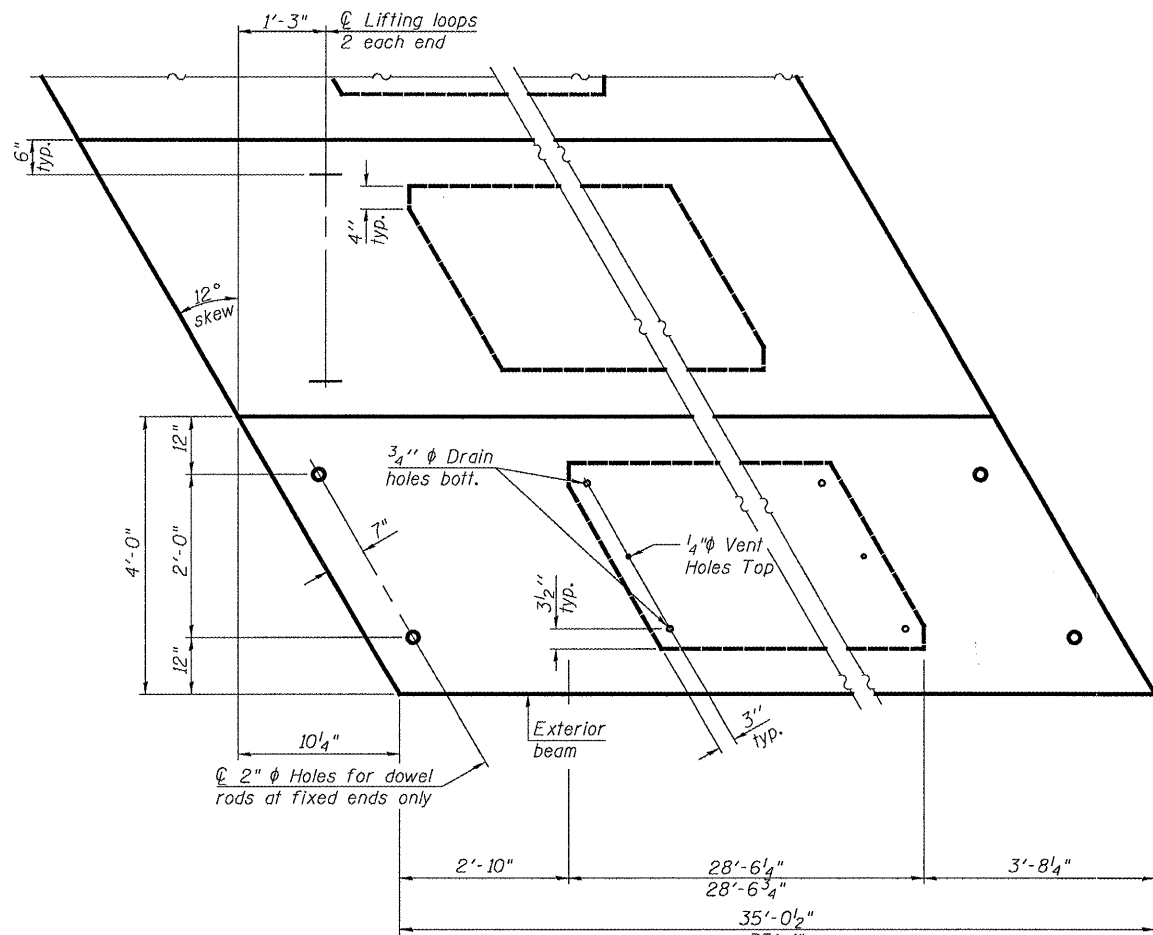
ROUTE NO.	SECTION	COUNTY	DISTRICT	SHEET NO.	SHEET NO. 3 4 SHEETS
FAS 370	1102 BR11	Livingston	13	12	
FED. ROAD DIST. NO. 7		ILLINOIS		FED. AID PROJECT-	
Contract Number: --- 66814					



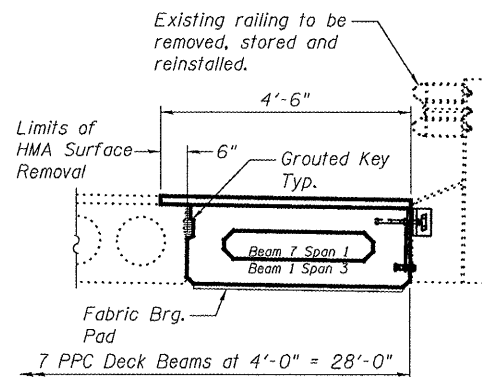
FABRIC BEARING PAD
FABRIC ADJUSTING PAD
FIXED



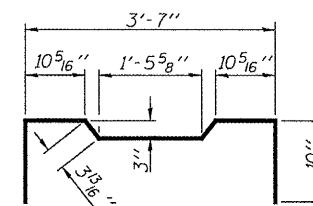
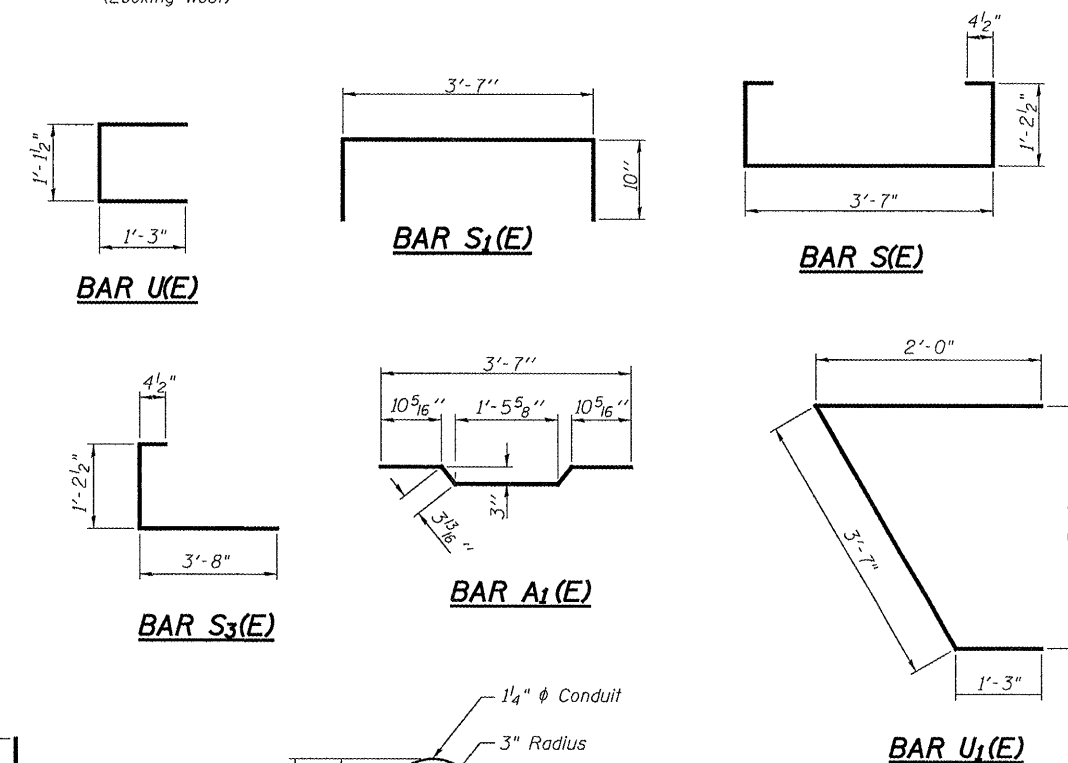
SPAN 2 CROSS SECTION
(Looking West)



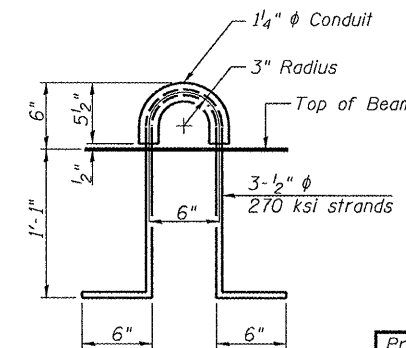
PLAN VIEW



SPAN 1 AND SPAN 3 CROSS SECTION
(Span 1 Looking West)
(Span 3 Looking East)



BAR S₂(E)



LIFTING LOOP DETAIL

BILL OF MATERIAL

Precast Prestressed Conc. Deck Bms. (17" depth)	Sq. Ft.	982.0
---	---------	-------

NOTES

- Prestressing steel shall be uncoated high strength, low relaxation 7-wire strand, Grade 270. The nominal diameter shall be 1/2" and the nominal cross-sectional area shall be 0.153 sq. in.
- Reinforcement bars shall conform to ASTM A 706 (IL MOD), Grade 60. (See Special Provisions)
- Two 3/8" fabric adjusting shims of the dimensions shown shall be provided for each bearing pad location. A minimum 2 1/2" diameter lifting pin shall be used to engage the lifting loops during handling.
- Corrosion Inhibitor, per Article 1020.05(b)(12) and 1021.06 of the Standard Specifications, shall be used in the concrete for precast prestressed concrete deck beams.
- Compressive strength of prestressed concrete, f'c, shall be 6000 psi.
- Compressive strength of prestressed concrete at release, f'ci, shall be 5000 psi.

BEAM DETAILS
F.A.S. RT. 370
LIVINGSTON COUNTY
SN 053-0157

DESIGNED	A.J.B.
CHECKED	V.H.V.
DRAWN	Drew Christopher
CHECKED	A.J.B. V.H.V.

May 9, 2008
EXAMINED
PASSED

PD-1748-RD 8-29-07