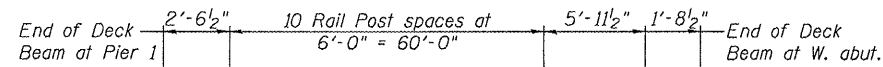


STATE OF ILLINOIS
DEPARTMENT OF TRANSPORTATION

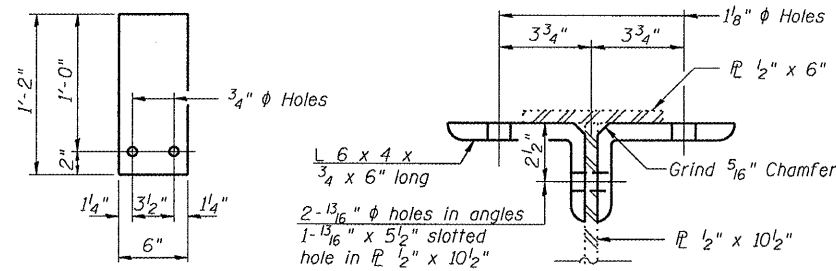
ROUTE NO.	SECTION	COUNTY	TOTAL SHEETS	SHEET NO.	SHEET NO. 4 4 SHEETS
FAS 370	102 BRU	Livingston	13	13	
FED. ROAD DIST. NO. 7	ILLINOIS	FED. AID PROJECT			

Contract Number: --- 66814



RAIL POST SPACING ON SOUTH RAIL

(Looking South)
North rail similar by rotation



1/4" SHIM PLATE

SECTION B-B

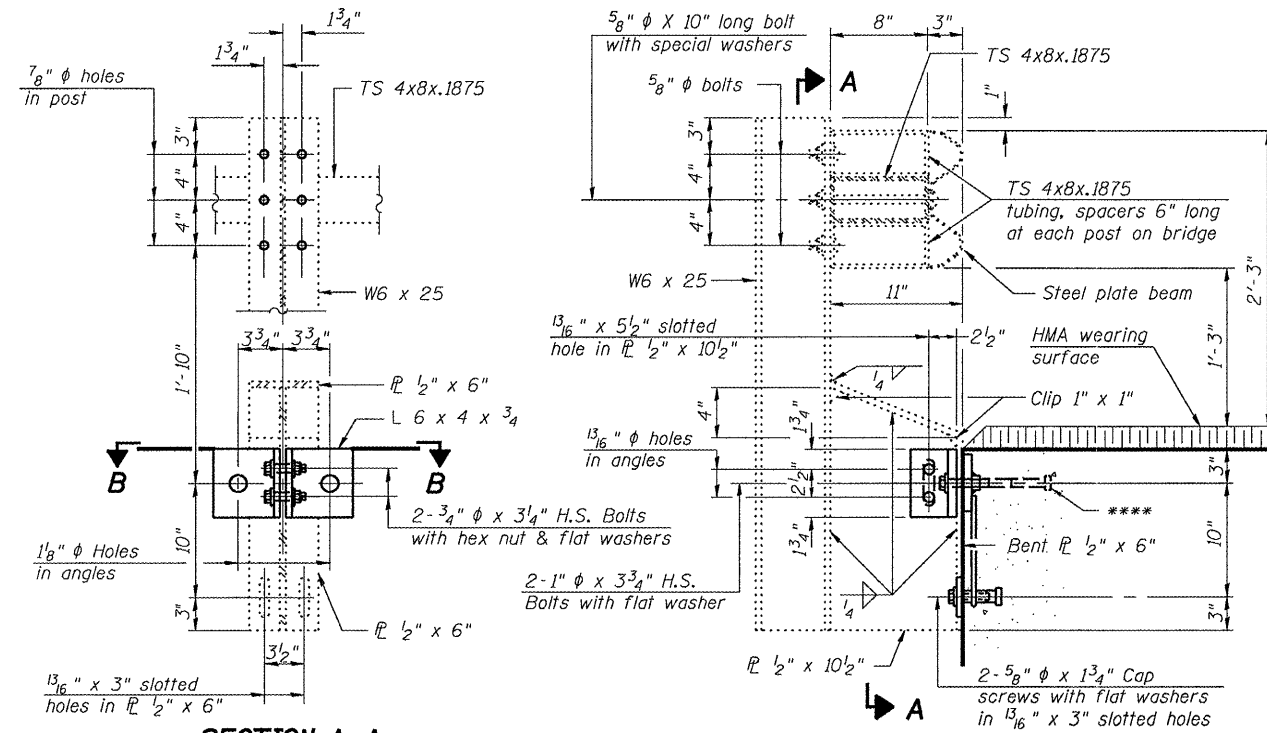
Notes:

All field drilled holes shall be coated with an approved zinc rich paint before erection.

For multi-span bridges, sufficient 1/4" x 6" x 1'-2" galvanized steel shims shall be provided to align rail between adjacent spans. Cost included with Removing and Re-erecting Existing Railing.

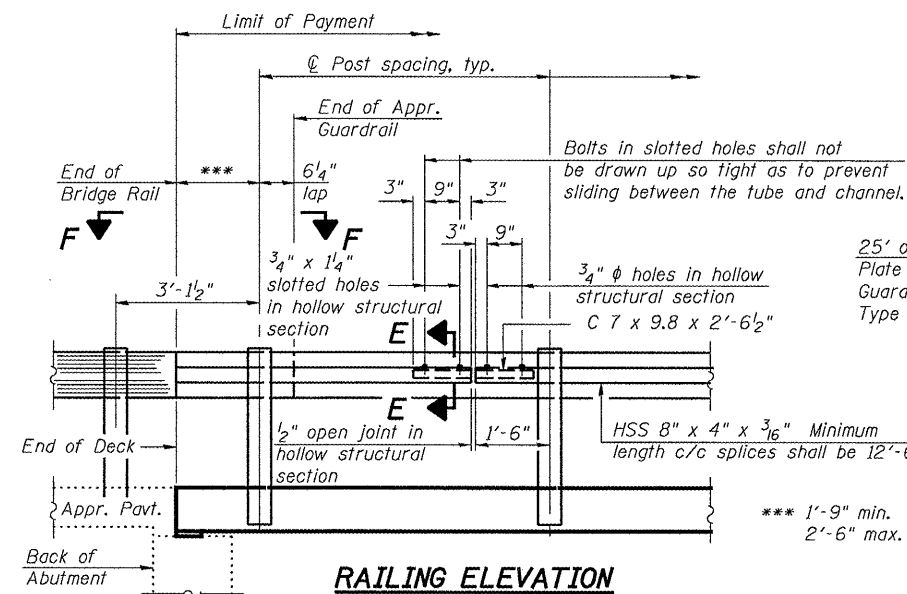
All steel rail members shall be galvanized according to Article 509.05 of the Standard Specifications.

**** The studs of the anchor devices shall be placed below the top reinforcement bars and the outermost longitudinal reinforcement bar shall be placed directly above the studs of the rail post anchor device.

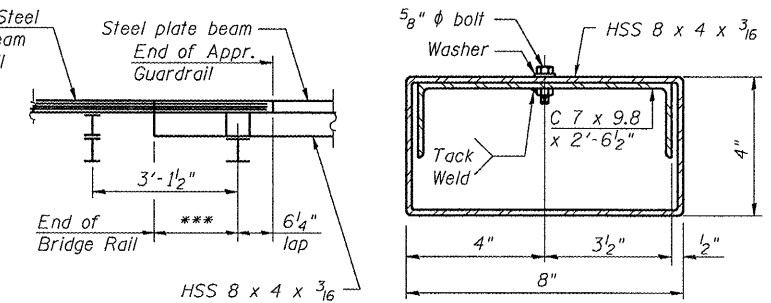


SECTION A-A

SECTION AT RAIL POST

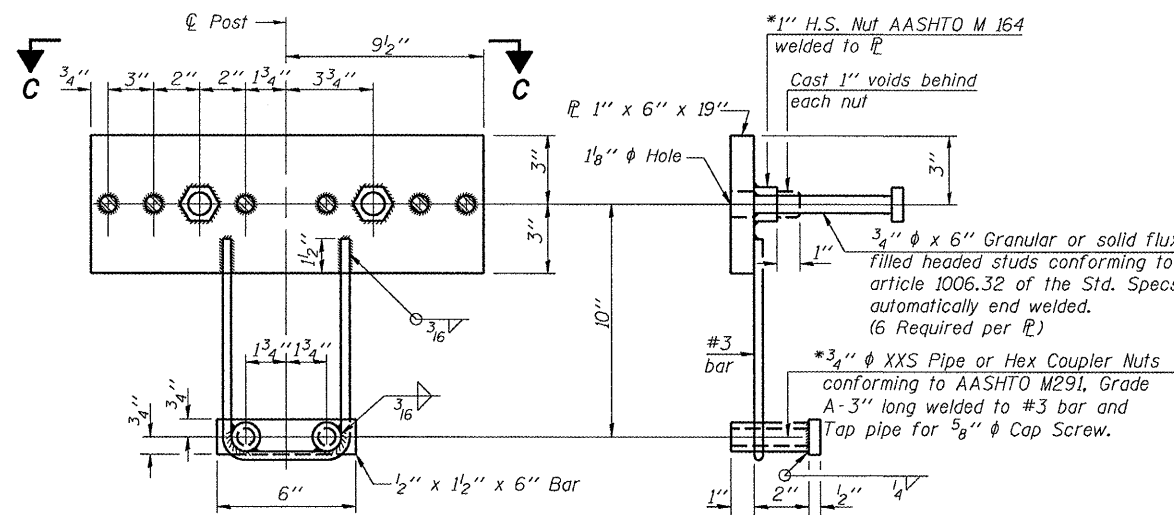


RAILING ELEVATION

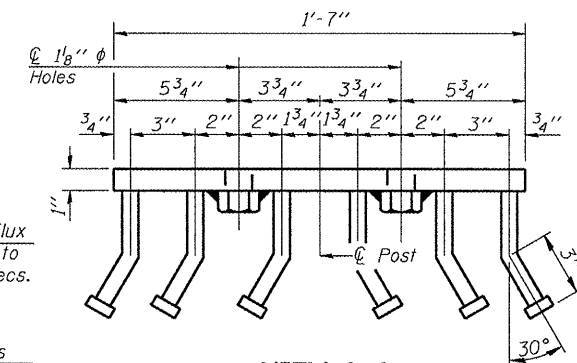


VIEW F-F

SECTION E-E



ANCHOR DEVICE



VIEW C-C

*Threaded areas shall be plugged or blocked off during casting of beam. Galvanized after fabrication.

DESIGNED	A.J.B.
CHECKED	V.H.V.
DRAWN	Drew Christopher
CHECKED	A.J.B. V.H.V.

May 9, 2008
EXAMINED *Carl Prosky*
ENGINEER OF STRUCTURAL SERVICES
PASSED *Ralph E. Anderson*
ENGINEER OF BRIDGES AND STRUCTURES

RAIL DETAILS
F.A.S. RT. 370
LIVINGSTON COUNTY
SN 053-0157