

STATE OF ILLINOIS  
DEPARTMENT OF TRANSPORTATION

ROUTE NO.	SECTION	COUNTY	TOTAL SHEETS	SHEET NO.	SHEET NO. 1 2 SHEETS
FAP021	*	FORD	6	5	
FED. ROAD DIST. NO. 7	ILLINOIS	FED. AID PROJECT			

Contract Number: 66818  
\* (116-6K-1) I

**GENERAL NOTES**

All structural steel shall conform to AASHTO Classification M-270 Gr. 36, unless otherwise noted.

Plan dimensions and details relative to existing plans are subject to routine variations. The Contractor shall field verify existing dimensions and details affecting new construction and make necessary approved adjustments prior to construction or ordering of materials. Such variations shall not be cause for additional compensation for a change in scope of the work, however, the Contractor will be paid for the quantity actually furnished based upon the unit price bid for the work.

See Section 584 of the Standard Specifications for Epoxy Grouting of Threaded Rods.

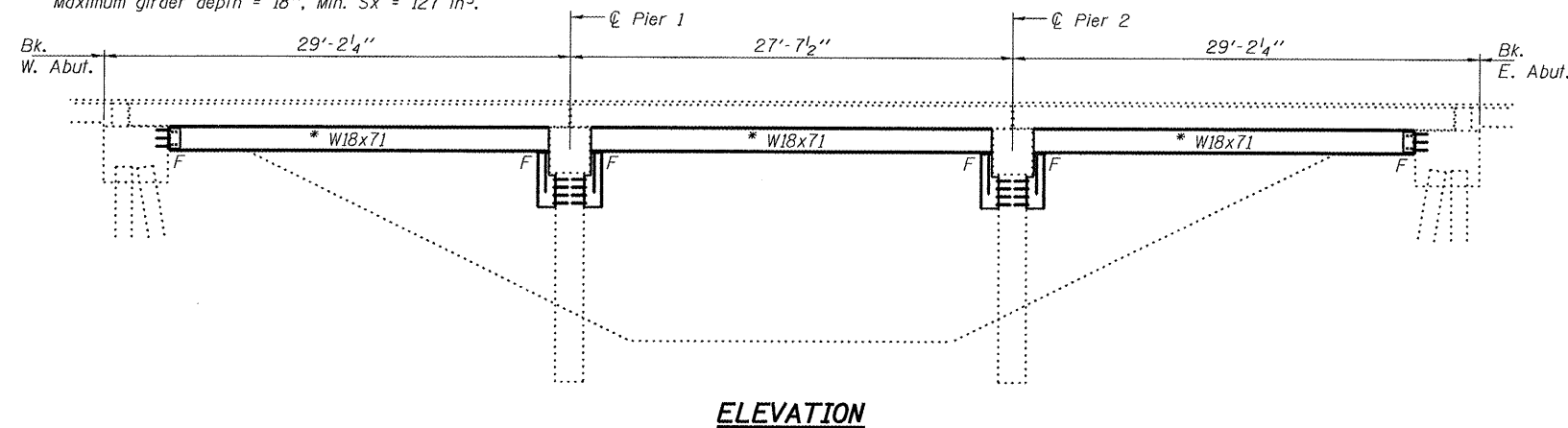
The cost of epoxy grouting threaded rods shall be included with Furnishing and Erecting Structural Steel.

The Contractor has the option of using used steel. See special provisions.

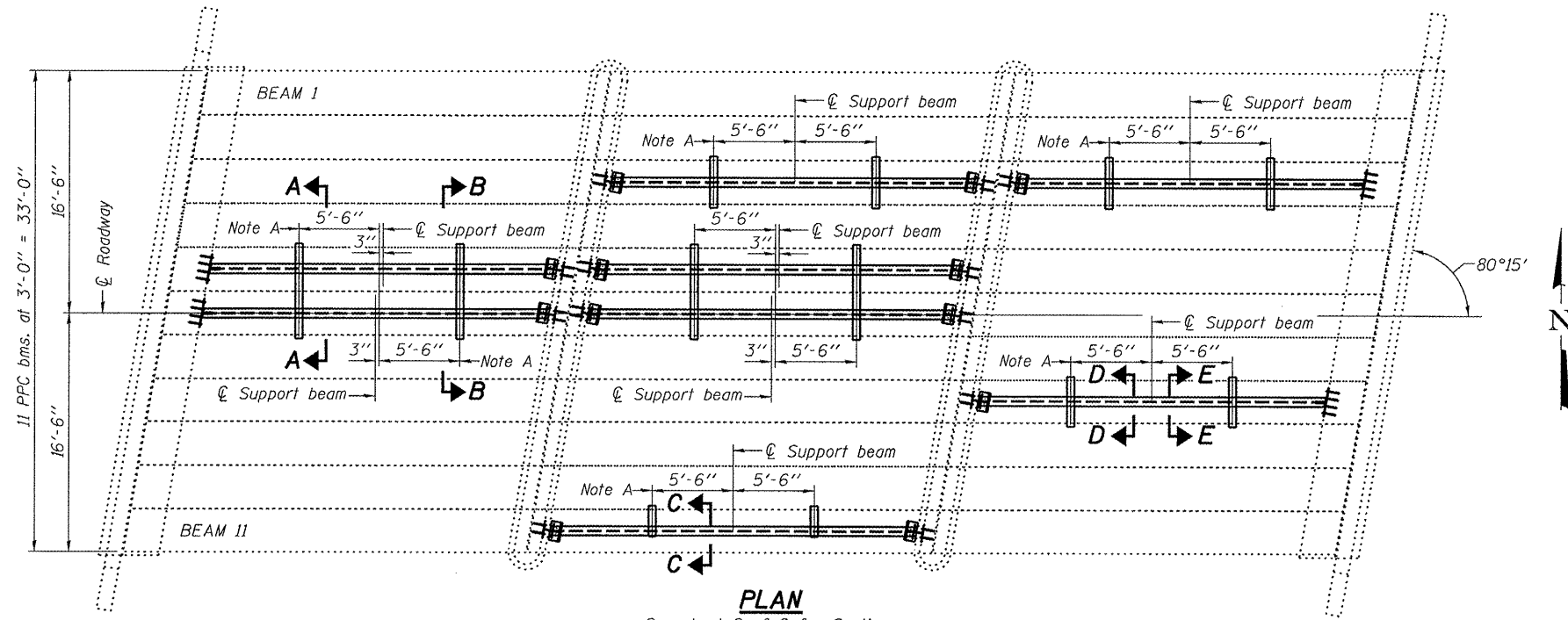
The contractor is advised that the existing PPC Deck Beams are in a deteriorated condition with reduced load carrying capacity. It is the contractors responsibility to account for the condition of the beams when developing construction procedures.

If the contractor's procedure for placement of beams involves placement of cranes or other heavy equipment on the bridge, a detailed procedure shall be submitted to the Engineer for approval. The procedure shall include calculations, prepared and sealed by an Illinois Licensed Structural Engineer, verifying that the equipment and procedure used will not overstress the existing beams. To distribute load to multiple beams and protect the existing surface, in all cases a double layer mat of heavy timbers shall be used at all times under crane tracks or wheels and any outriggers in the down position. If necessary, shims shall be used under the crane mat to ensure uniform contact with the underlying beams.

\* Contractor is to verify beam length prior to ordering material. (See Detail A). Other sections meeting the section modulus requirements shown may be allowed subject to approval by the Bureau of Bridges and Structures, however, no additional payment will be allowed if the contractor chooses a heavier steel section than the one specified in the plans. Maximum girder depth = 18", Min. Sx = 127 in<sup>3</sup>.

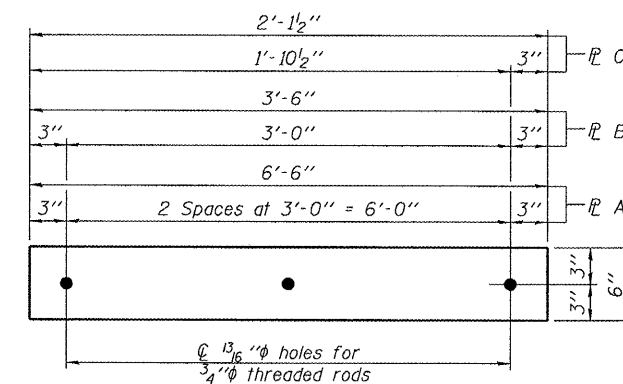


**ELEVATION**



**PLAN**

See sheet 2 of 2 for Sections.

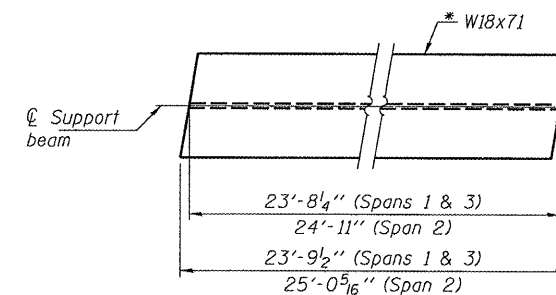


**TRANSVERSE TIE P'S**

- P A 1/2" x 6" x 6'-6" (4 Req'd)
- P B 1/2" x 6" x 3'-6" (6 Req'd)
- P C 1/2" x 6" x 2'-1 1/2" (2 Req'd)

**TOTAL BILL OF MATERIAL**

ITEM	UNIT	QUANTITY
Furnishing and Erecting Structural Steel	Pound	19100



**DETAIL A**

**PLAN AND ELEVATION  
SBI 116 OVER DRAINAGE DITCH  
FORD COUNTY  
SN 027-0045**

DESIGNED	Victor H. Veliz
CHECKED	Ralph E. Anderson
DRAWN	baliva
CHECKED	VHV JAB

APRIL 15, 2008  
EXAMINED  
PASSED  
ENGINEER OF STRUCTURAL SERVICES  
ENGINEER OF BRIDGES AND STRUCTURES



Expires: November 30, 2008