

F.A.P. RTE.	SECTION	COUNTY	TOTAL SHEETS	SHEET NO.
681	(116-BR-1)I	FORD	6	1
FED. ROAD DIST. NO. _____		ILLINOIS	CONTRACT NO. 66818	

STATE OF ILLINOIS
DEPARTMENT OF TRANSPORTATION
DIVISION OF HIGHWAYS
**PROPOSED
HIGHWAY PLANS**

FAP ROUTE 681 (IL 116)
SECTION (116-BR-1)I

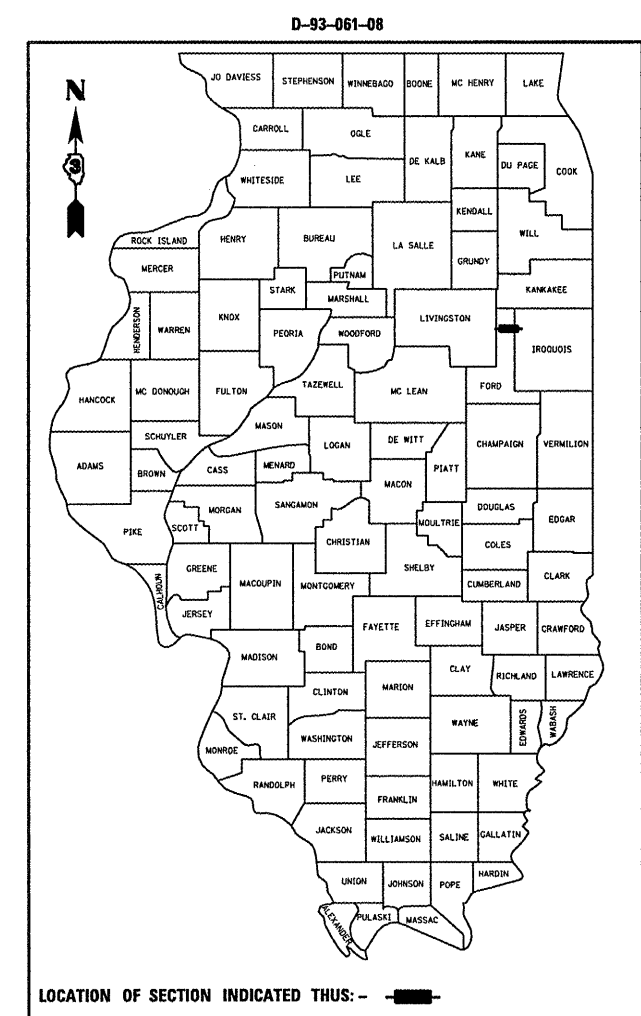
FORD COUNTY
C-93-094-08
DECK SLAB SUPPORT

INDEX OF SHEETS

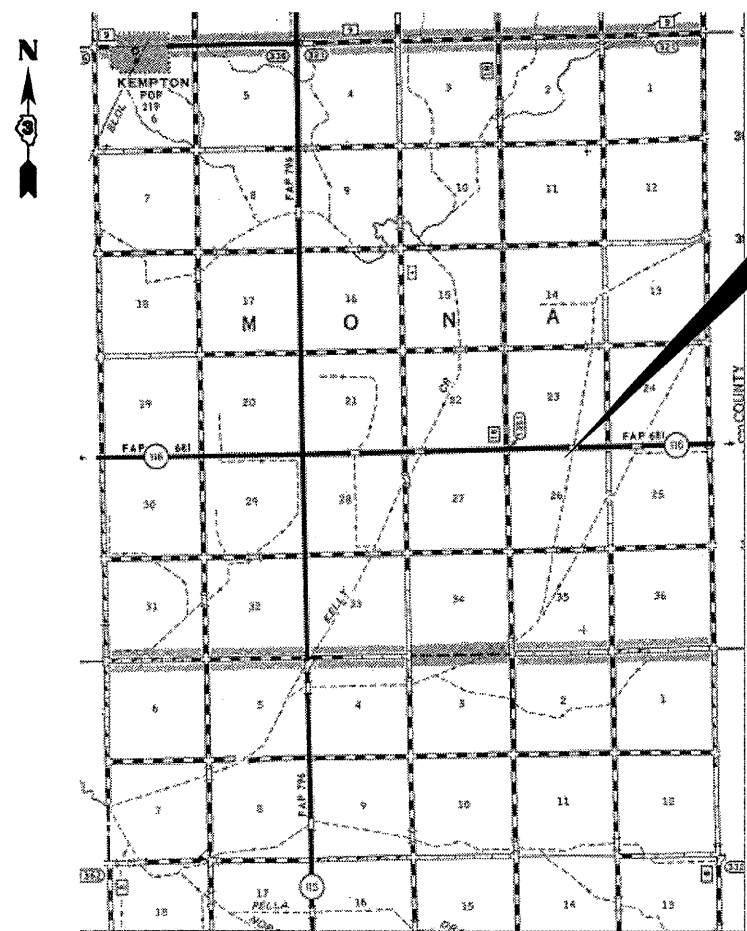
1. COVER SHEET
2. GENERAL NOTES
3. SUMMARY OF QUANTITIES
4. TYPICAL SECTION
5. PLAN AND ELEVATION - SN 053-0050
6. REPAIR DETAILS

STANDARDS

- | | |
|-----------|--|
| 001006 | DECIMAL OF AN INCH AND OF A FOOT |
| 701001-01 | OFF-ROAD OPERATIONS 2L, 2W, MORE THAN 4.5 m (15') AWAY |
| 701006-02 | OFF-ROAD OPERATIONS 2L, 2W, 4.5 m (15') TO 600 mm (24") FROM PAVEMENT EDGE |
| 701201-02 | LANE CLOSURE, 2L, 2W, DAY ONLY, FOR SPEEDS ≥ 45 MPH |
| 701301-02 | LANE CLOSURE, 2L, 2W, SHORT TIME OPERATIONS |
| 701901 | TRAFFIC CONTROL DEVICES |



PROJECT LOCATION
SN 027-0045
2.67 MILES EAST OF IL ROUTE 115



LOCATION MAP

NOT TO SCALE
POINT LOCATION

FUNCTIONAL CLASSIFICATION
RURAL - MINOR ARTERIAL
F.A.P. ROUTE 681 (IL 116)
2005 ADT = 900
P.V = 81.1% M.U. = 11.1% S.U. = 7.8%

STATE OF ILLINOIS
DEPARTMENT OF TRANSPORTATION
DIVISION OF HIGHWAYS

SUBMITTED 3/25 2008

[Signature]
DEPUTY DIRECTOR OF HIGHWAYS, REGION ENGINEER

May 9, 2008
[Signature]
Interim ENGINEER OF DESIGN AND ENVIRONMENT

May 9, 2008
[Signature]
DIRECTOR OF HIGHWAYS, CHIEF ENGINEER

**PRINTED BY THE AUTHORITY
OF THE STATE OF ILLINOIS**

MICROFILMED _____
REEL NUMBER _____
AWARDED _____
RESIDENT ENGINEER _____
AS BUILT CHANGES WERE MADE
ON THE FOLLOWING SHEETS _____

J.U.L.I.E.
JOINT UTILITY LOCATION INFORMATION FOR EXCAVATION
1-800-892-0123

PROJECT ENGINEER : JOE KANNEL
UNIT CHIEF : RON WOODSHANK

CONTRACT NO. 66818

GENERAL NOTES

PLAN DIMENSIONS AND DETAILS RELATIVE TO EXISTING PLANS ARE SUBJECT TO ROUTINE VARIATIONS. THE CONTRACTOR SHALL FIELD VERIFY EXISTING DIMENSIONS AND DETAILS AFFECTING NEW CONSTRUCTION AND MAKE NECESSARY APPROVED ADJUSTMENTS PRIOR TO CONSTRUCTION OR ORDERING OF MATERIALS. SUCH VARIATIONS SHALL NOT BE CAUSE FOR ADDITIONAL COMPENSATION FOR A CHANGE IN THE SCOPE OF THE WORK. HOWEVER, THE CONTRACTOR WILL BE PAID FOR THE QUANTITY FURNISHED BASED UPON THE UNIT BID PRICE FOR THE WORK.

FOR STABILIZATION, ALL TYPE III BARRICADES SHALL REQUIRE A MINIMUM OF FOUR SAND BAGS PER BARRICADE.

THE CONTRACTOR SHALL BE RESPONSIBLE FOR PROTECTING UTILITY PROPERTY FROM CONSTRUCTION OPERATIONS AS OUTLINED IN ARTICLE 107.31 OF THE STANDARD SPECIFICATIONS. THE "JULIE" NUMBER IS 1-800-892-0123. A MINIMUM OF FORTY-EIGHT (48) HOURS ADVANCE NOTICE IS REQUIRED.

WHERE SECTION OR SUBSECTION MONUMENTS ARE ENCOUNTERED, THE ENGINEER SHALL BE NOTIFIED BEFORE SUCH MONUMENTS ARE REMOVED. THE CONTRACTOR SHALL PROTECT AND CAREFULLY PRESERVE ALL MONUMENTS UNTIL AN AUTHORIZED SURVEYOR OR AGENT HAS WITNESSED OR OTHERWISE REFERENCED THEIR LOCATION. THE CONTRACTOR SHALL BE RESPONSIBLE FOR HAVING AN AUTHORIZED SURVEYOR REESTABLISH ANY SECTION OR SUBSECTION MONUMENTS DESTROYED BY HIS OPERATIONS.

THE THICKNESS OF HMA SHOWN ON THE PLANS IS THE NOMINAL THICKNESS. DEVIATIONS FROM THE NOMINAL THICKNESS WILL BE PERMITTED WHEN SUCH DEVIATIONS OCCUR DUE TO IRREGULARITIES IN THE EXISTING SURFACE OR BASE ON WHICH THE HMA IS PLACED.

ANY REFERENCE TO A STANDARD IN THESE PLANS SHALL BE INTERPRETED TO MEAN THE EDITION AS INDICATED BY THE SUBNUMBER LISTED ON THE INDEX OF SHEETS OR THE COPY OF THE STANDARD INCLUDED IN THESE PLANS.

THE EXISTING SHOULDERS ARE LOW. IN THE EVENT THAT CONSTRUCTION OPERATIONS RESULT IN A DROP OFF GREATER THAN 3" BETWEEN THE EDGE OF PAVEMENT OR EDGE OF SHOULDER WITHIN 3' OF THE EDGE OF PAVEMENT AND THE EARTH OR AGGREGATE SHOULDERS, THEN THE DROP OFF SHALL BE PROTECTED ACCORDING TO ARTICLE 701.04(B)(1) OF THE STANDARD SPECIFICATIONS. THIS WORK WILL BE CONSIDERED AS INCLUDED IN THE CONTRACT UNIT PRICES FOR TRAFFIC CONTROL.

ABANDONED UNDERGROUND UTILITIES THAT CONFLICT WITH CONSTRUCTION SHALL BE DISPOSED OF OUTSIDE THE LIMITS OF THE RIGHT OF WAY ACCORDING TO ARTICLE 202.03 OF THE STANDARD SPECIFICATIONS AND AS DIRECTED BY THE ENGINEER. THIS WORK WILL NOT BE PAID FOR SEPARATELY BUT SHALL BE INCLUDED IN THE COST OF EARTH EXCAVATION WIDENING.

DATE: 3.29.08

PREPARED BY: [Signature]
DISTRICT STUDIES & PLANS ENGINEER

EXAMINED BY: [Signature]
DISTRICT CONSTRUCTION ENGINEER

[Signature]
DISTRICT MATERIALS ENGINEER

[Signature]
DISTRICT OPERATIONS ENGINEER

FILE NAME =	USER NAME = woodshenr1	DESIGNED - RON WOODSHANK	REVISED - ---
c:\projects\deck beam repl 08\en 027-004.dgn		DRAWN - RON WOODSHANK	REVISED - ---
	PLOT SCALE = 103.4029' / IN.	CHECKED - ---	REVISED - ---
	PLOT DATE = Mar 11, 2008 - 03:47:00 PM	DATE - -----	REVISED - ---

STATE OF ILLINOIS
DEPARTMENT OF TRANSPORTATION

GENERAL NOTES

SCALE: _____ SHEET NO. 1 OF 1 SHEETS STA. _____ TO STA. _____

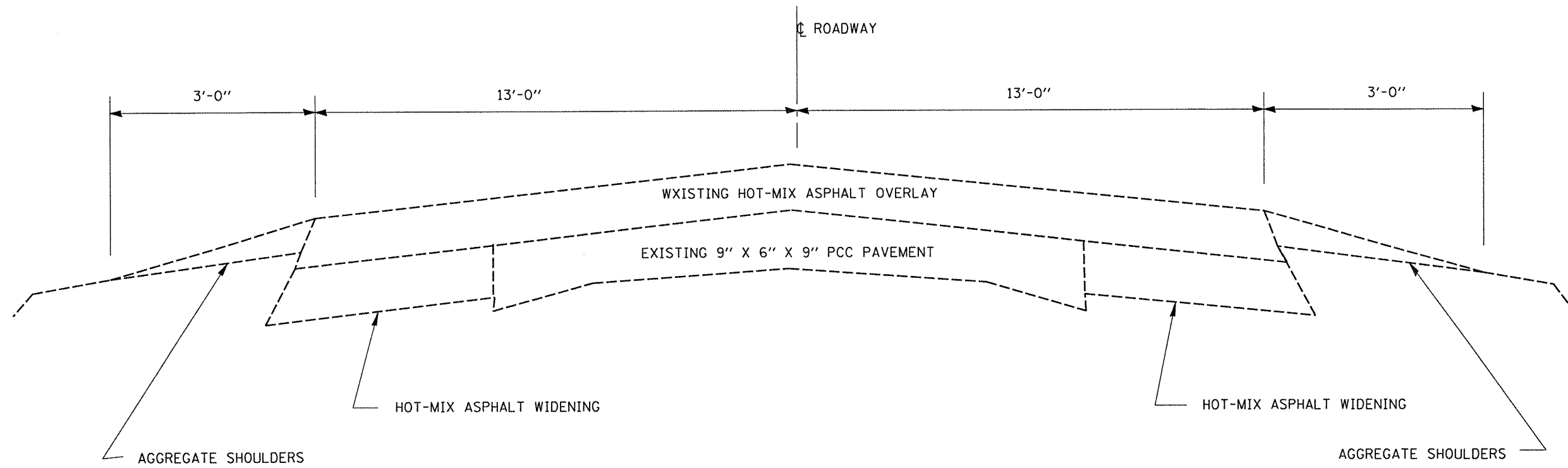
F.A.P. RTE.	SECTION	COUNTY	TOTAL SHEETS	SHEET NO.
681	(116-BR-1)	FORD	6	2
CONTRACT NO. 66818				
FED. ROAD DIST. NO. - ILLINOIS FED. AID PROJECT				

SUMMARY OF QUANTITIES

CONSTRUCTION CODE TYPE: SFTY-2A

RURAL
100% STATE
TOTAL
QUANTITY

CODE NO.	ITEM	UNIT	TOTAL QUANTITY
50500405	FURNISHING AND ERECTING STRUCTURAL STEEL	POUND	19,100
67100100	MOBILIZATION	L SUM	1
70100450	TRAFFIC CONTROL AND PROTECTION, STANDARD 701201	L SUM	1



FILE NAME =	USER NAME = woodshankr1	DESIGNED - RON WOODSHANK	REVISED - ---
c:\projects\deak beam repl 08\van 027-0045.dgn		DRAWN - RON WOODSHANK	REVISED - ---
PLOT SCALE = 1/32" = 1/8" IN.		CHECKED - ---	REVISED - ---
PLOT DATE = Mar 11, 2008 - 01:00:17 PM		DATE - ---	REVISED - ---

STATE OF ILLINOIS
DEPARTMENT OF TRANSPORTATION

TYPICAL SECTION

SCALE: _____ SHEET NO. 1 OF 1 SHEETS STA. _____ TO STA. _____

F.A.P. RTE.	SECTION	COUNTY	TOTAL SHEETS	SHEET NO.
681	(116-BR-1)	FORD	6	4
FED. ROAD DIST. NO. _____ ILLINOIS FED. AID PROJECT			CONTRACT NO. 66818	

STATE OF ILLINOIS
DEPARTMENT OF TRANSPORTATION

ROUTE NO.	SECTION	COUNTY	TOTAL SHEETS	SHEET NO.
FAPC01	*	FORD	6	5
FED. ROAD DIST. NO. 7	ILLINOIS	FED. AID PROJECT		

SHEET NO. 1
2 SHEETS

Contract Number: 66818
* (116-BK-1)I

GENERAL NOTES

All structural steel shall conform to AASHTO Classification M-270 Gr. 36, unless otherwise noted.

Plan dimensions and details relative to existing plans are subject to routine variations. The Contractor shall field verify existing dimensions and details affecting new construction and make necessary approved adjustments prior to construction or ordering of materials. Such variations shall not be cause for additional compensation for a change in scope of the work, however, the Contractor will be paid for the quantity actually furnished based upon the unit price bid for the work.

See Section 584 of the Standard Specifications for Epoxy Grouting of Threaded Rods.

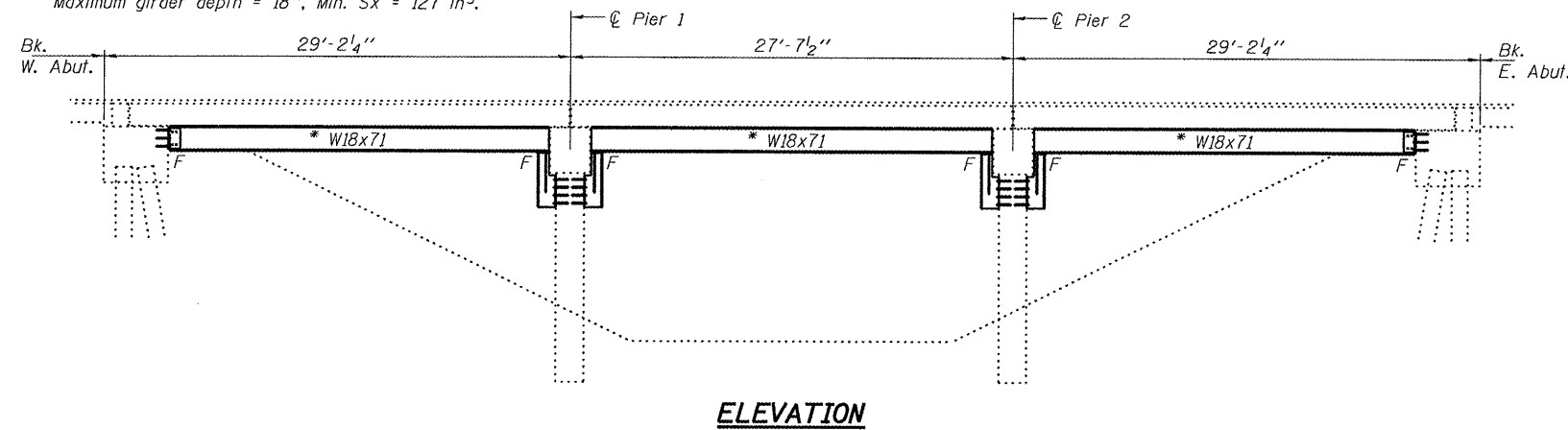
The cost of epoxy grouting threaded rods shall be included with Furnishing and Erecting Structural Steel.

The Contractor has the option of using used steel. See special provisions.

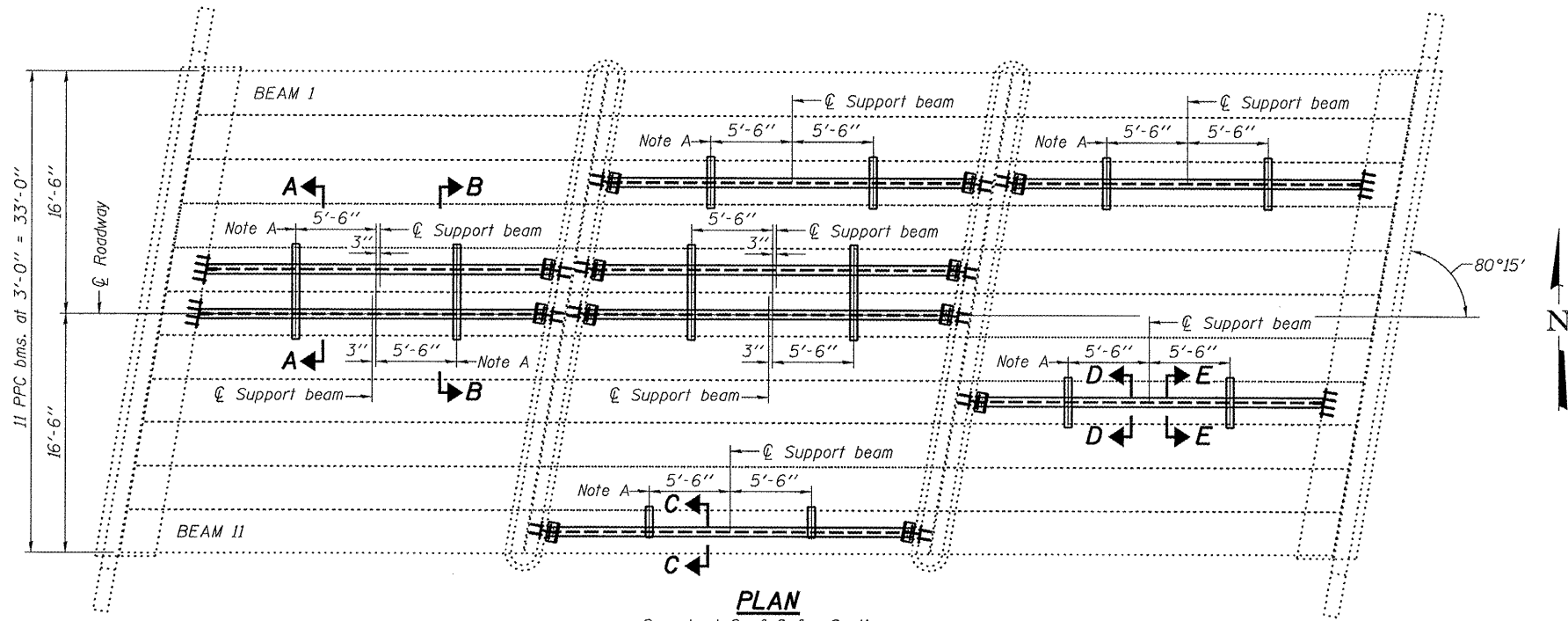
The contractor is advised that the existing PPC Deck Beams are in a deteriorated condition with reduced load carrying capacity. It is the contractors responsibility to account for the condition of the beams when developing construction procedures.

If the contractor's procedure for placement of beams involves placement of cranes or other heavy equipment on the bridge, a detailed procedure shall be submitted to the Engineer for approval. The procedure shall include calculations, prepared and sealed by an Illinois Licensed Structural Engineer, verifying that the equipment and procedure used will not overstress the existing beams. To distribute load to multiple beams and protect the existing surface, in all cases a double layer mat of heavy timbers shall be used at all times under crane tracks or wheels and any outriggers in the down position. If necessary, shims shall be used under the crane mat to ensure uniform contact with the underlying beams.

* Contractor is to verify beam length prior to ordering material. (See Detail A). Other sections meeting the section modulus requirements shown may be allowed subject to approval by the Bureau of Bridges and Structures, however, no additional payment will be allowed if the contractor chooses a heavier steel section than the one specified in the plans. Maximum girder depth = 18", Min. Sx = 127 in³.

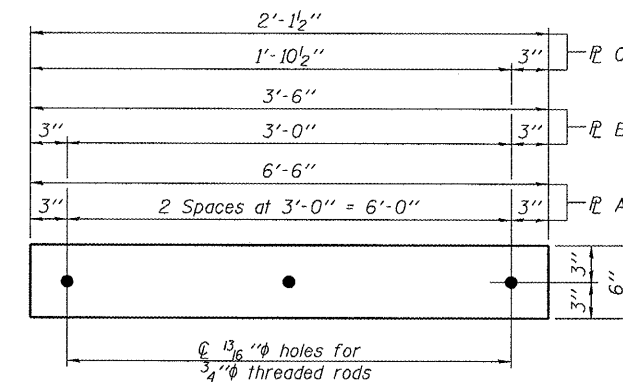


ELEVATION



PLAN

See sheet 2 of 2 for Sections.



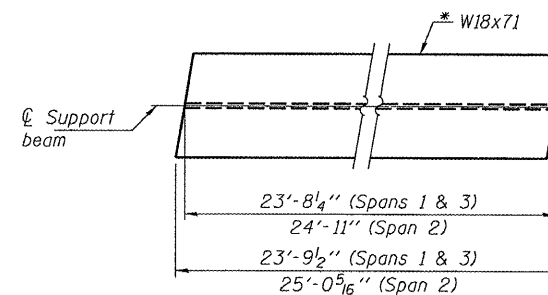
TRANSVERSE TIE P'S

- P A 1/2" x 6" x 6'-6" (4 Req'd)
- P B 1/2" x 6" x 3'-6" (6 Req'd)
- P C 1/2" x 6" x 2'-1 1/2" (2 Req'd)

TOTAL BILL OF MATERIAL

ITEM	UNIT	QUANTITY
Furnishing and Erecting Structural Steel	Pound	19100

PLAN AND ELEVATION
SBI 116 OVER DRAINAGE DITCH
FORD COUNTY
SN 027-0045



DETAIL A

Note A:
⊕ Transverse tie plates. Place additional shims at midpoints between tie plates. Securely weld shims to top flange of support beam. Minimum shim size is 6" x flange width.



Expires: November 30, 2008

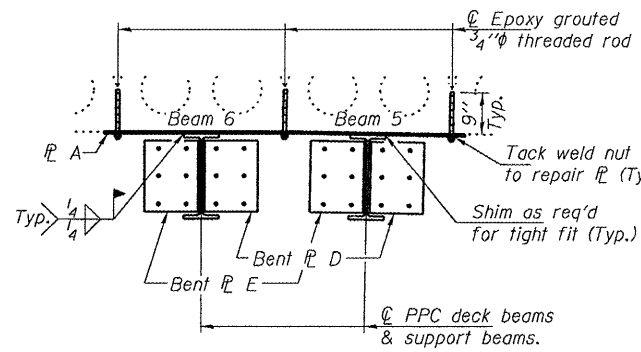
DESIGNED	Victor H. Veliz	APRIL 15, 2008
CHECKED	Ralph E. Anderson	EXAMINED
DRAWN	baliva	PASSED
CHECKED	VHV JAB	

STATE OF ILLINOIS
DEPARTMENT OF TRANSPORTATION

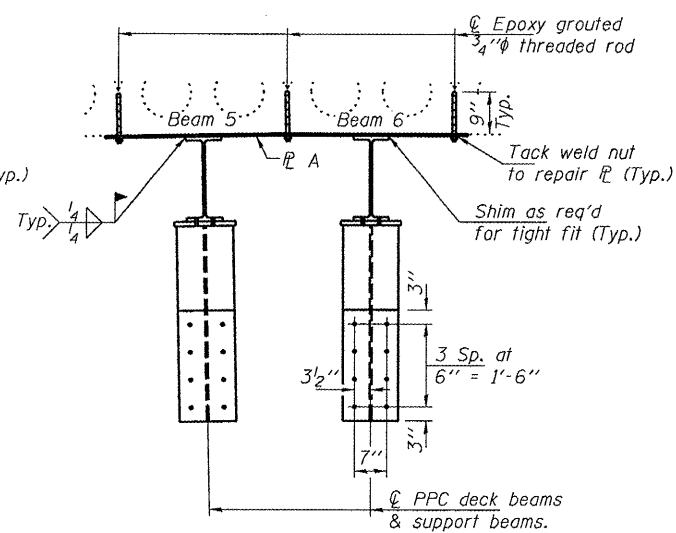
ROUTE NO.	SECTION	COUNTY	DISTRICT	SHEET	SHEET NO. 2 2 SHEETS
FAP 681	*	FORD	6	6	
FED. ROAD DIST. NO. 7		ILLINOIS		FED. AID PROJECT	

Contract Number: 66818

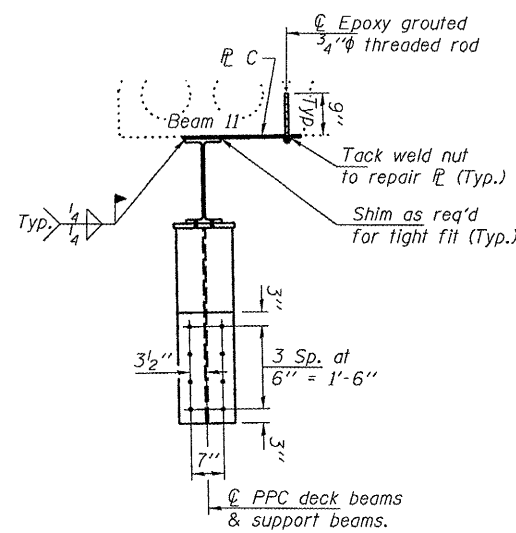
* (116-BR-1) I



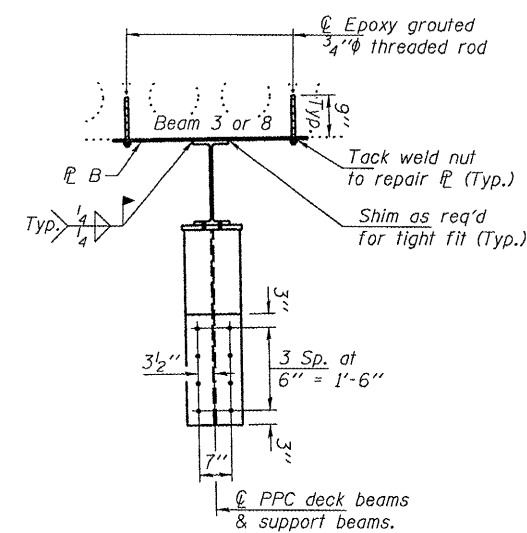
SECTION A-A



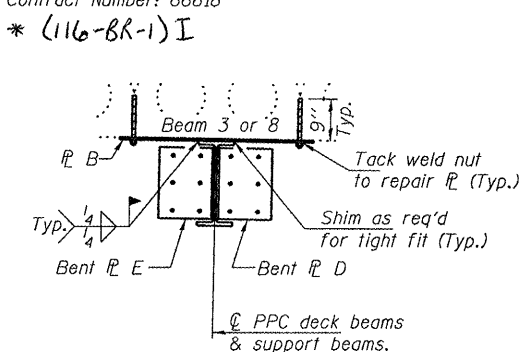
SECTION B-B



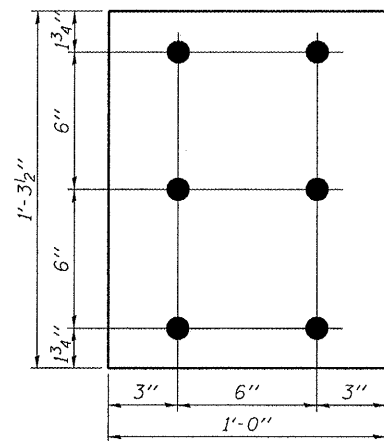
SECTION C-C



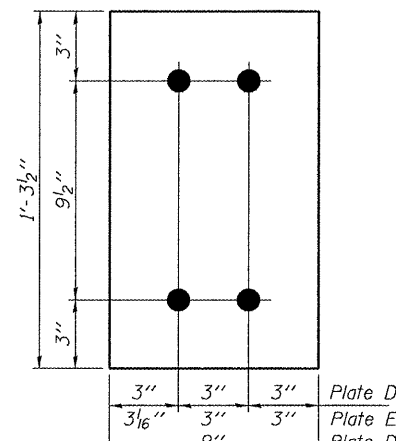
SECTION D-D



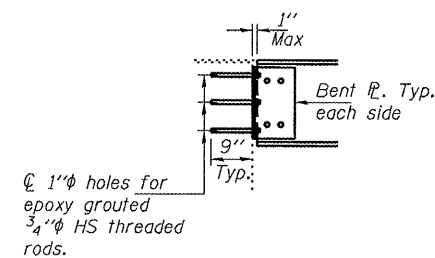
SECTION E-E



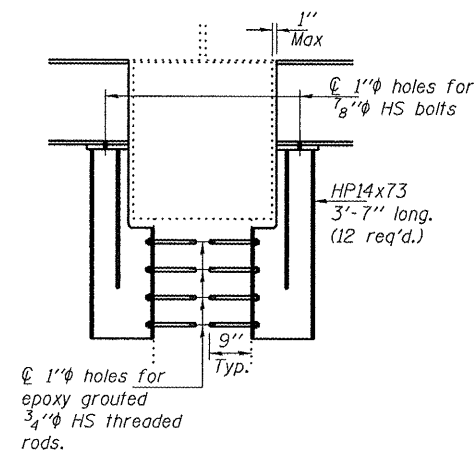
VIEW F-F



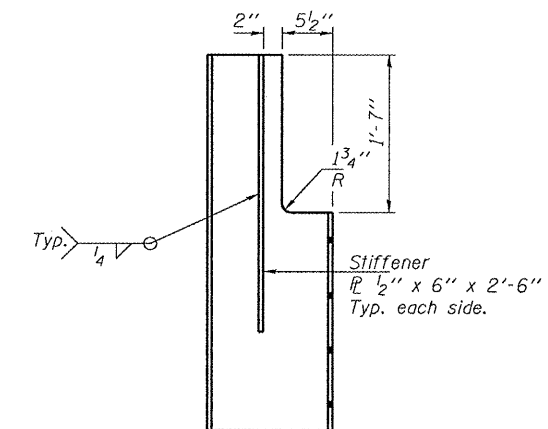
VIEW G-G



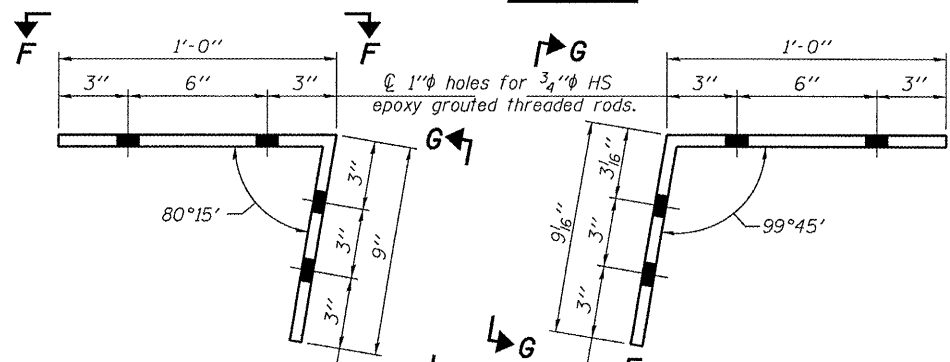
SECTION AT ABUTMENTS



SECTION AT PIERS

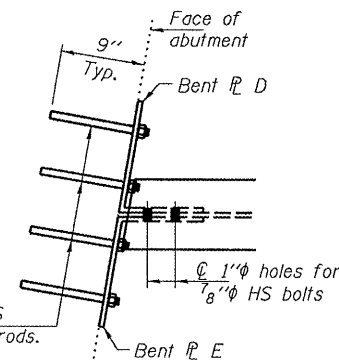


HP SECTION
(12 required)

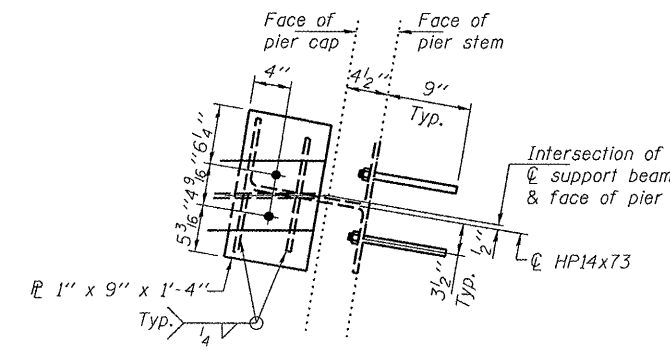


BENT PLATE D
PL 1/2" x 1'-3 1/2" x 1'-9"
(4 required)

BENT PLATE E
PL 1/2" x 1'-3 1/2" x 1'-9 1/2"
(4 required)



PARTIAL PLAN AT ABUTMENTS



PARTIAL PLAN AT PIERS

REPAIR DETAILS
SBI 116 OVER DRAINAGE DITCH
FORD COUNTY
SN 027-0045

DESIGNED	VHV
CHECKED	DAB
DRAWN	baliva
CHECKED	VHV DAB

APRIL 15, 2008
EXAMINED *Carl Prosser*
ENGINEER OF STRUCTURAL SERVICES
PASSED *Ralph E. Anderson*
ENGINEER OF BRIDGES AND STRUCTURES