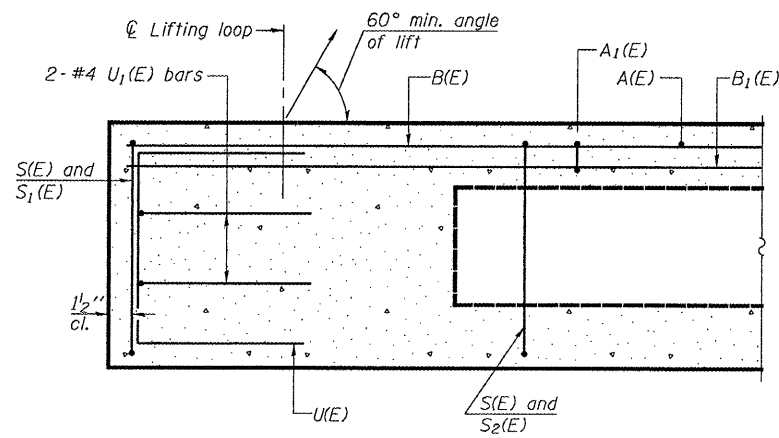


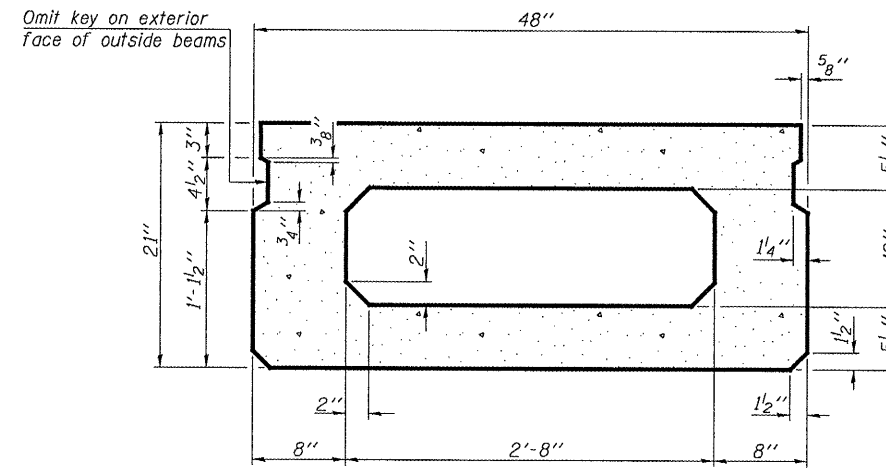
STATE OF ILLINOIS  
DEPARTMENT OF TRANSPORTATION

ROUTE NO.	SECTION	COUNTY	TOTAL SHEETS	SHEET NO.	SHEET NO. 2
FA 693		FORD	15	12	5 SHEETS
FED. ROAD DIST. NO. 7	ILLINOIS	FED. AID PROJECT			

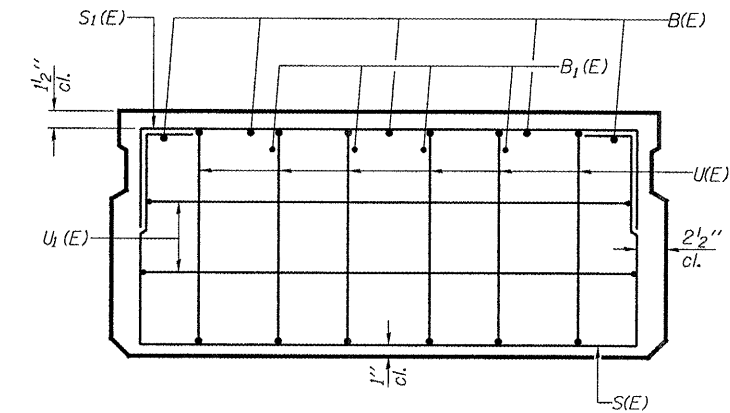
Contract Number: 66819



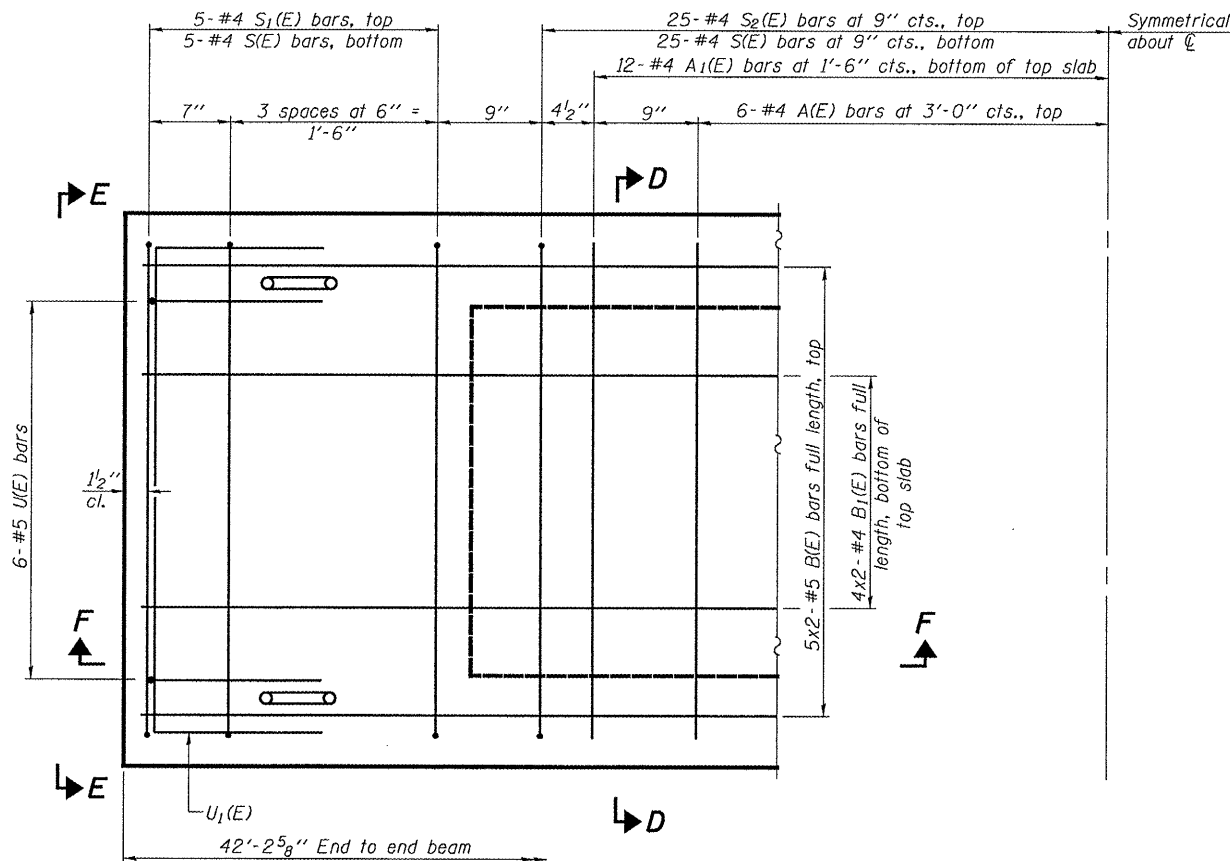
SECTION F-F



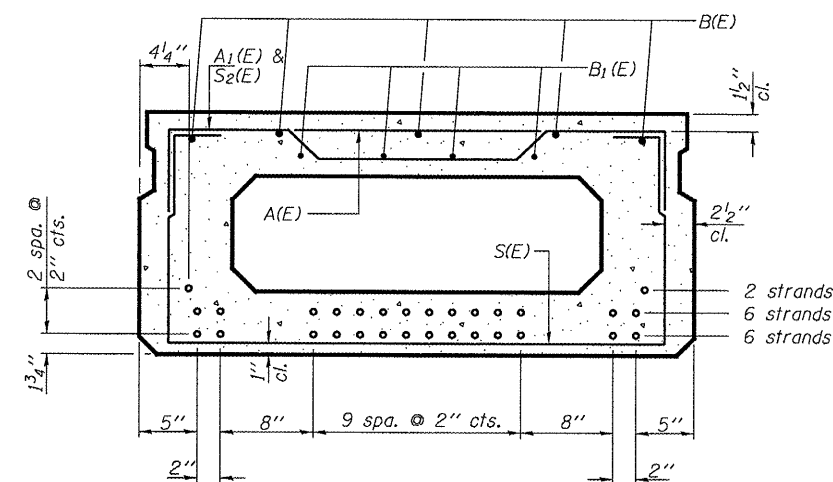
SECTION D-D  
(Showing dimensions)



VIEW E-E



PLAN VIEW



SECTION D-D

(Showing reinforcement and permissible strand locations)  
Note: Place the number of strands specified in each row symmetrically about the centerline of beam in the permissible strand locations shown.

BAR LIST  
ONE BEAM ONLY  
(For Information Only)

Bar	No.	Size	Length	Shape
A(E)	12	#4	3'-7"	—
A1(E)	24	#4	3'-10"	—
B(E)	10	#5	22'-1"	—
B1(E)	8	#4	21'-10"	—
S(E)	60	#4	7'-5"	U
S1(E)	10	#4	5'-11"	U
S2(E)	50	#4	6'-2"	U
U(E)	12	#5	4'-0"	U
U1(E)	4	#4	6'-0"	U

Note: See sheet 3 of 5 for additional details and Bill of Material.

Bars indicated thus 5 x 2-#5 etc. indicates 5 lines of bars with 2 lengths per line.

Note: Spacing of S(E) and S2(E) bars may be adjusted up to 4" in the immediate area of the transverse tie diaphragms to miss the block outs for the transverse ties.

DESIGNED	AJB
CHECKED	ATH
DRAWN	Steffen
CHECKED	AJB ATH

MAY 2, 2008  
EXAMINED *Carl Hoyer*  
ENGINEER OF STRUCTURAL SERVICES  
PASSED *Ralph E. Anderson*  
ENGINEER OF BRIDGES AND STRUCTURES

BEAM DETAILS  
FAP 693 OVER W. BR. DRUMMER CREEK  
FORD COUNTY  
SN 027-0005