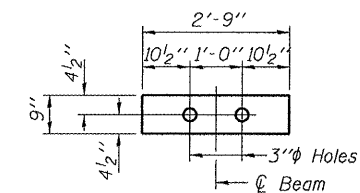


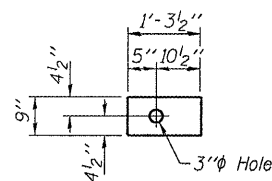
STATE OF ILLINOIS
DEPARTMENT OF TRANSPORTATION

ROUTE NO.	SECTION	COUNTY	DATE	SHEET NO.	SHEET NO. 3 5 SHEETS
FA 698	(101BR)	BUREAU	14	12	
FED. ROAD DIST. NO. 7	ILLINOIS	FED. AID PROJECT			

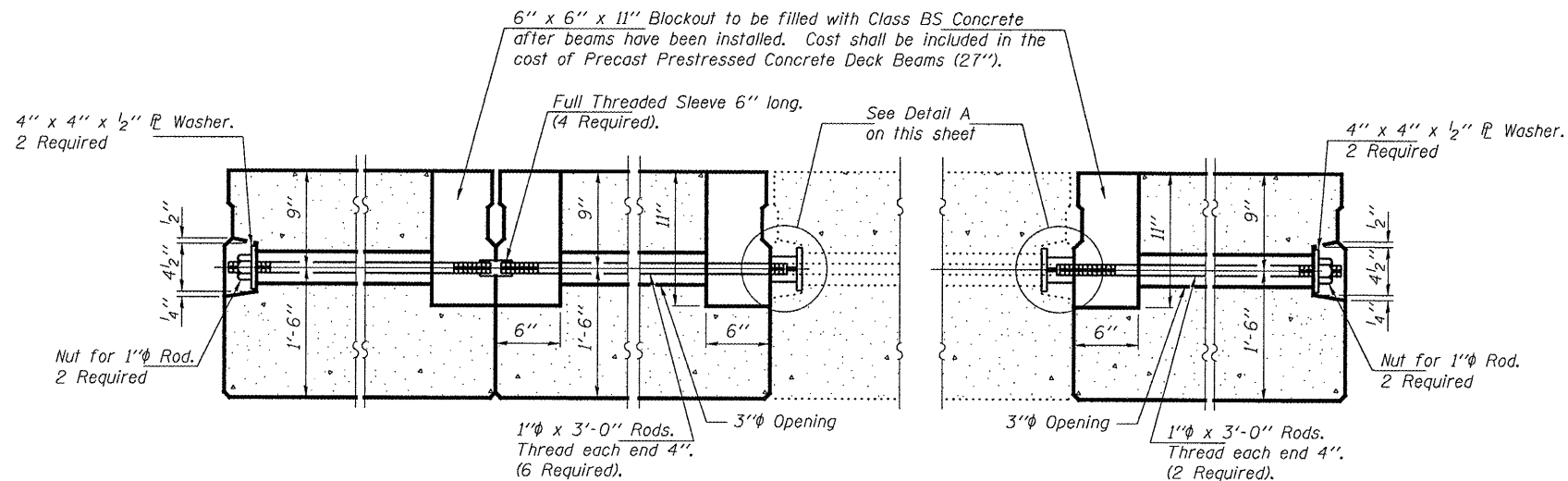
Contract Number: 66829



FIXED FABRIC BEARING PAD
(Omit holes when using expansion bearings)

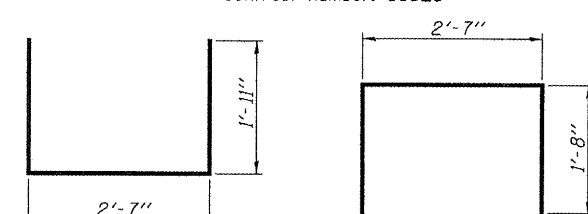


FIXED FABRIC ADJUSTING SHIM
(Omit holes when using expansion bearings)



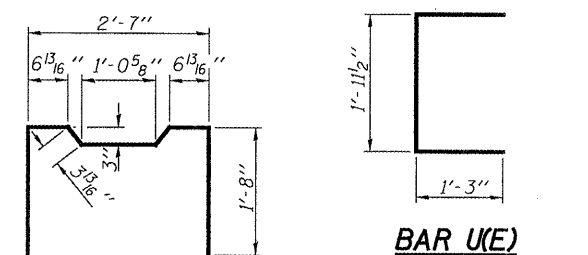
TRANSVERSE TIE ASSEMBLY
(Typical Beams 1, 2, & 3)

TRANSVERSE TIE ASSEMBLY
(Typical Beam 11)



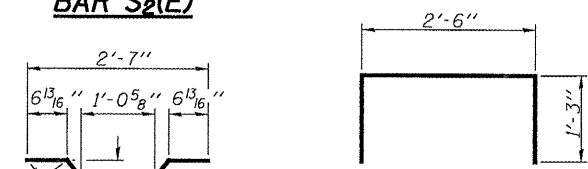
BAR S(E)

BAR S1(E)



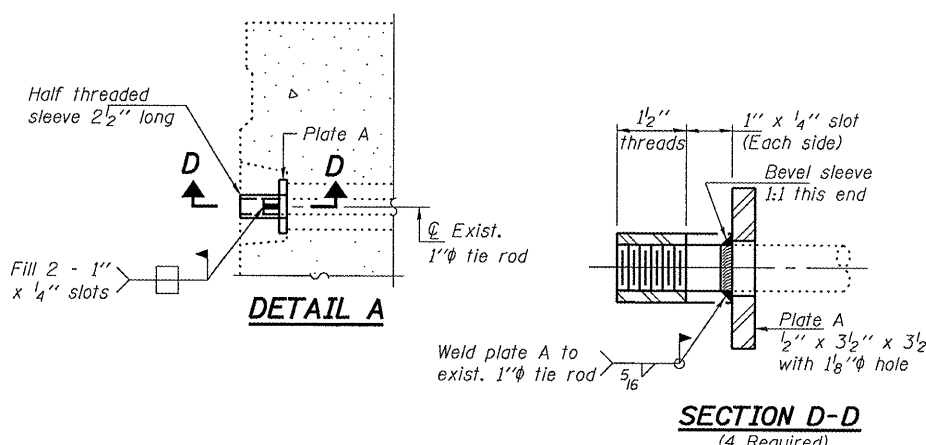
BAR S2(E)

BAR U(E)



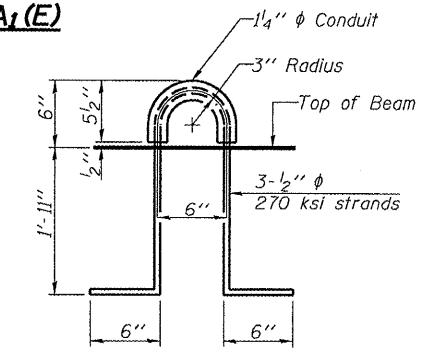
BAR A1(E)

BAR U1(E)

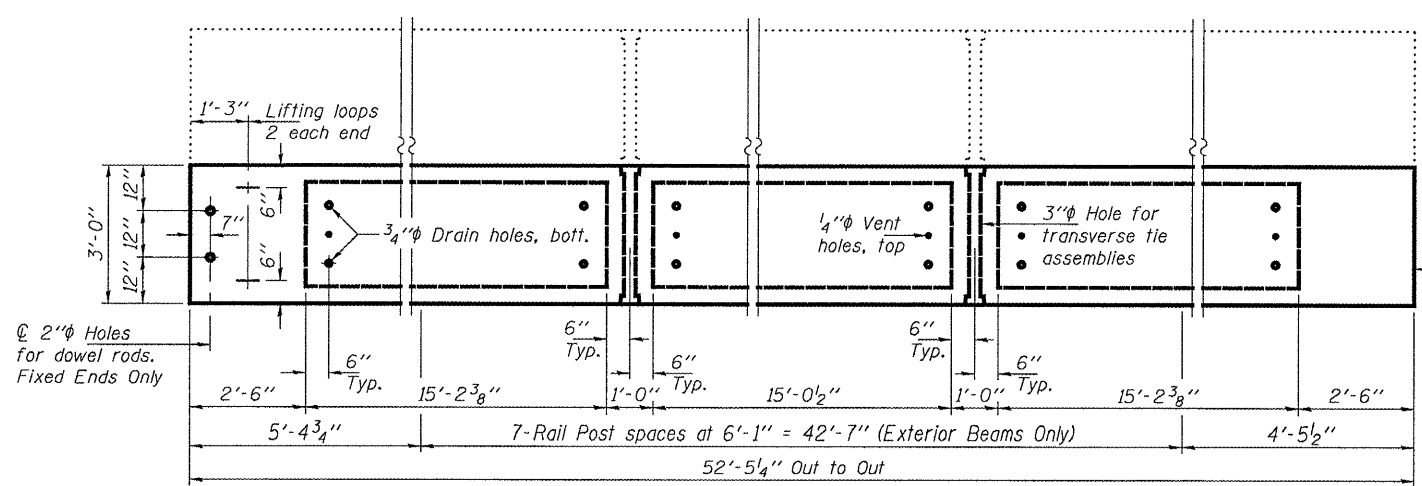


DETAIL A

SECTION D-D
(4 Required)



LIFTING LOOP DETAIL



PLAN

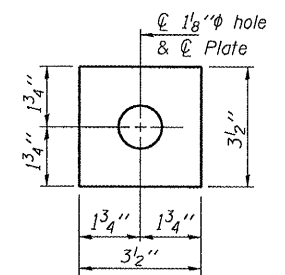


PLATE A
(4 Required)

BILL OF MATERIAL

Precast Prestressed Conc. Deck Bms. (27" depth)	Sq. Ft. 629.3
---	---------------

NOTES

Prestressing steel shall be uncoated high strength, low relaxation 7-wire strand, Grade 270. The nominal diameter shall be 1/2" and the nominal cross-sectional area shall be 0.153 sq. in. The 1" rods in the transverse tie assembly shall be tightened to a snug fit and the threads set. Pockets on exterior faces of bridge shall be filled with grout after transverse tie assembly is in place. Reinforcement bars shall conform to ASTM A 706 (IL MOD), Grade 60. (See Special Provisions). Two 1/2" fabric adjusting shims of the dimensions shown shall be provided for each bearing pad location. A minimum 2 1/2" lifting pin shall be used to engage the lifting loops during handling. Corrosion Inhibitor, per Article 1020.05(b)(12) and 1021.06 of the Standard Specifications, shall be used in the concrete for precast prestressed concrete deck beams. Compressive strength of prestressed concrete, f'c, shall be 6000 psi. Compressive strength of prestressed concrete at release, f'ci, shall be 5000 psi.

BEAM DETAILS
F.A. RT. 698 OVER
PIKE CREEK
BUREAU COUNTY
SN 006-0104

DESIGNED	ATH
CHECKED	AJB
DRAWN	Steffen
CHECKED	ATH AJB

MAY 6, 2008
EXAMINED *Carl Hoyer*
ENGINEER OF STRUCTURAL SERVICES
PASSED *Ralph E. Anderson*
ENGINEER OF BRIDGES AND STRUCTURES