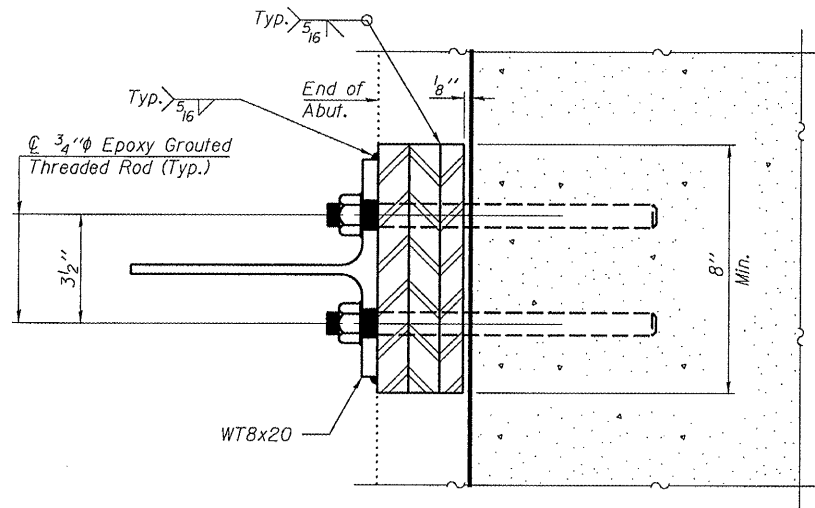


STATE OF ILLINOIS
DEPARTMENT OF TRANSPORTATION

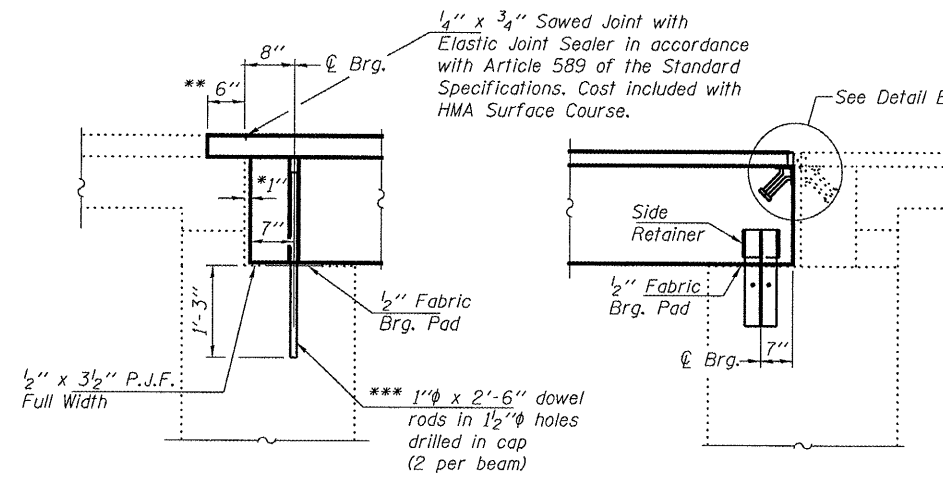
ROUTE NO.	SECTION	COUNTY	DATE	SHEET NO.
FA 698	(I0IBR)	BUREAU	14	13
FED. ROAD DIST. NO. 7	ILLINOIS	FED. AID PROJECT		

SHEET NO. 4
5 SHEETS

Contract Number: 66829

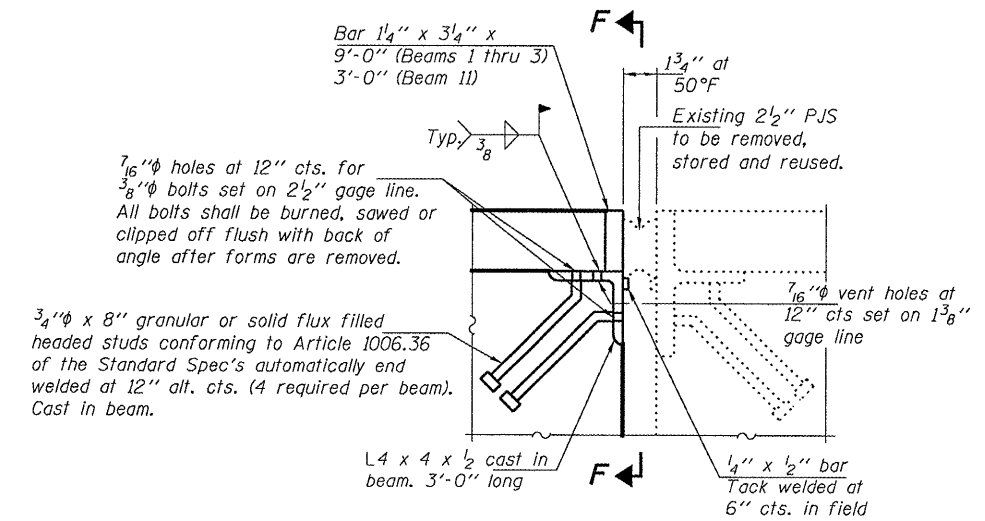


SECTION E-E



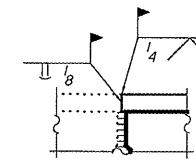
TYPICAL SECTION
AT N. ABUTMENT

TYPICAL SECTION
AT S. ABUTMENT

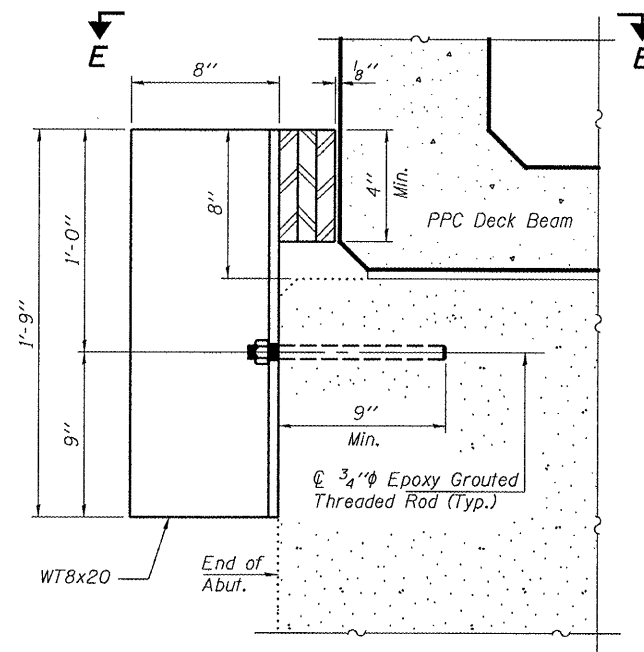


DETAIL B

(Cost included with PPC Deck Beams)



SECTION F-F

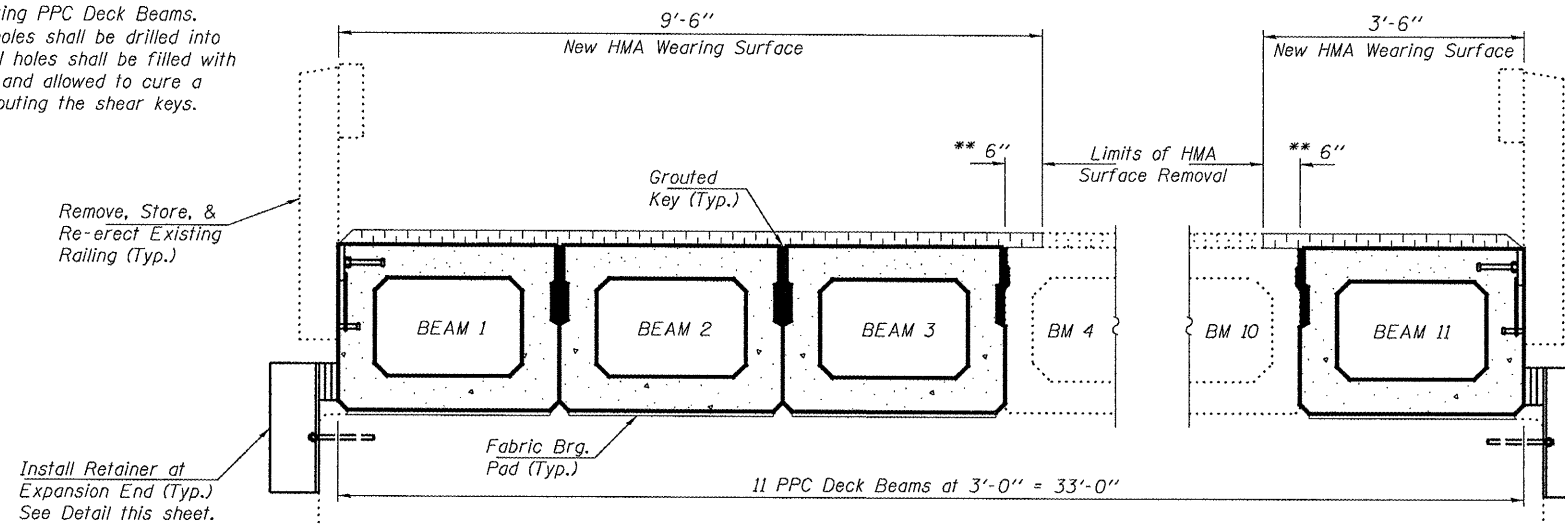


EXPANSION JOINT
RETAINER DETAILS

(Cost included with PPC Deck Beams)

- * 1" Joint shall be filled with non-shrink grout. Dimension may vary to accommodate tolerance in beam lengths.
- ** Limits of HMA Surface Removal. Existing waterproofing to remain. Lap new waterproofing 6" over existing.
- *** Existing dowel rods are to be burned off, ground flush, and sealed with epoxy prior to placement of new beams. Cost included in Removal of Existing PPC Deck Beams. After beams have been erected holes shall be drilled into cap and dowel rods placed. Dowel holes shall be filled with non-shrink grout to top of beam and allowed to cure a minimum of 24 hours prior to grouting the shear keys.

Note:
See Section 584 of the Standard Specifications for epoxy grouting of threaded rods.



PARTIAL CROSS SECTION

(Looking South)

DESIGNED	ATH
CHECKED	AJB
DRAWN	Steffen
CHECKED	ATH AJB

MAY 6, 2008
EXAMINED *Carl Perry*
ENGINEER OF STRUCTURAL SERVICES
PASSED *Ralph E. Anderson*
ENGINEER OF BRIDGES AND STRUCTURES

REPAIR DETAILS
F.A. RT. 698 OVER
PIKE CREEK
BUREAU COUNTY
SN 006-0104