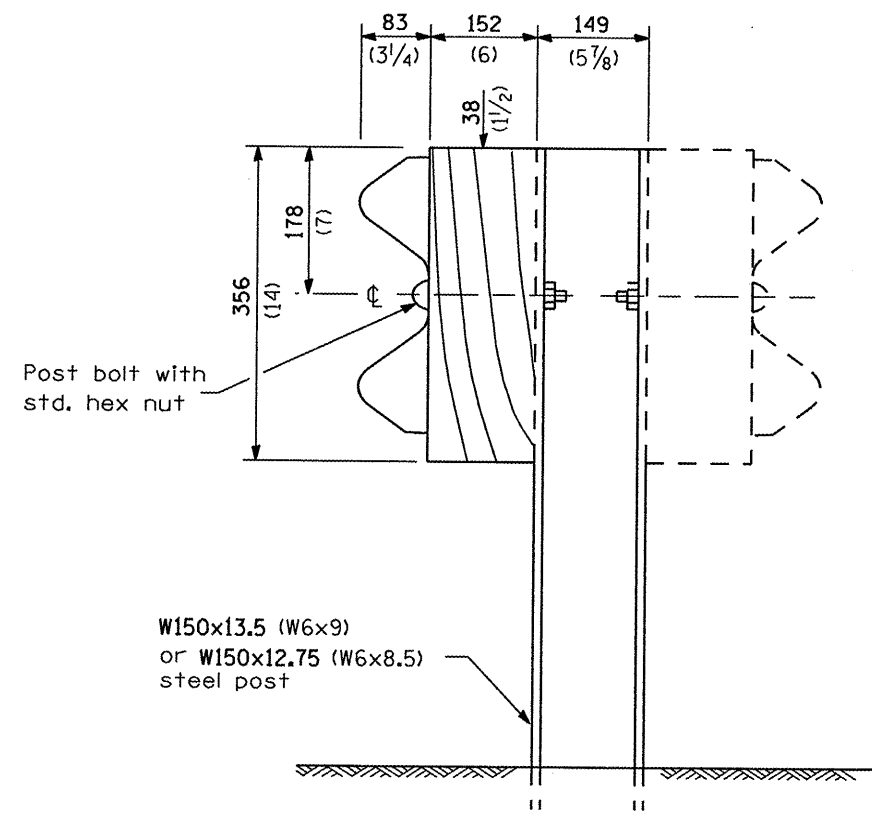
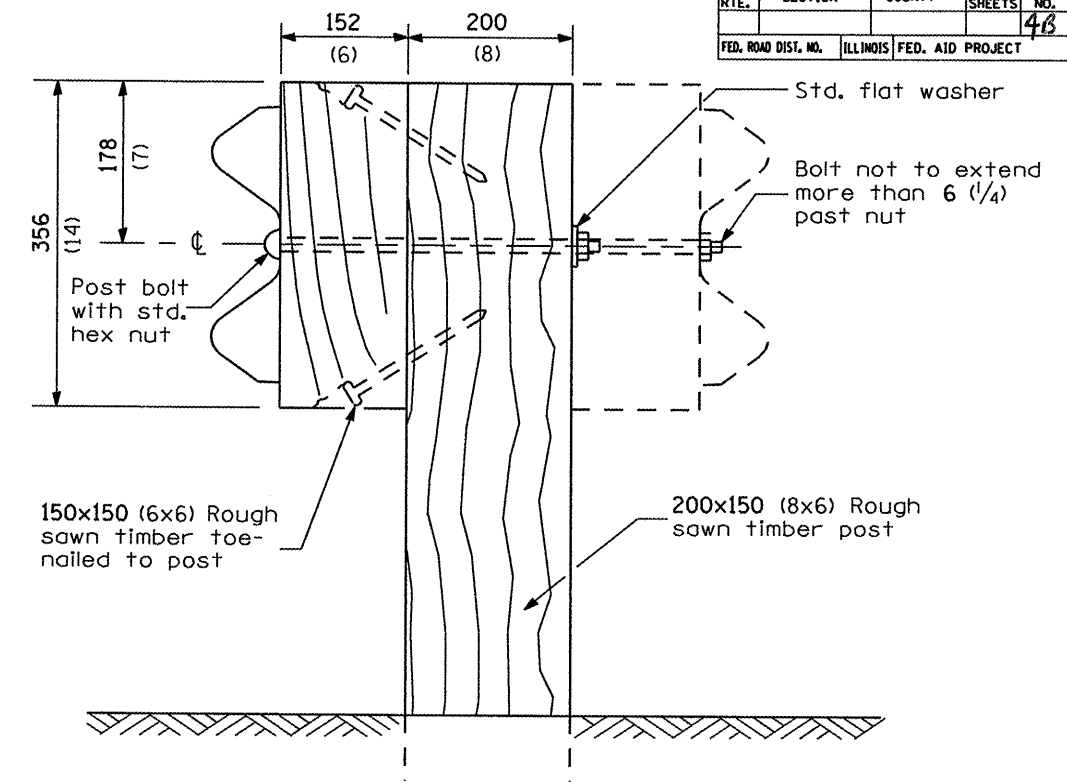


68012

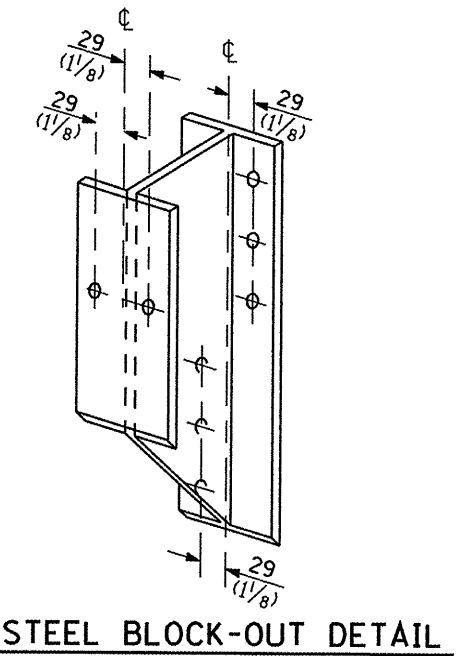
F.A. RTE.	SECTION	COUNTY	TOTAL SHEET NO.
			48
FED. ROAD DIST. NO.	ILLINOIS	FED. AID PROJECT	



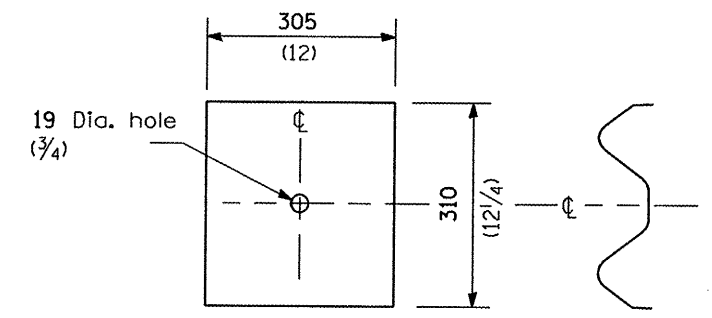
**STEEL POST CONSTRUCTION**



**WOOD POST CONSTRUCTION**



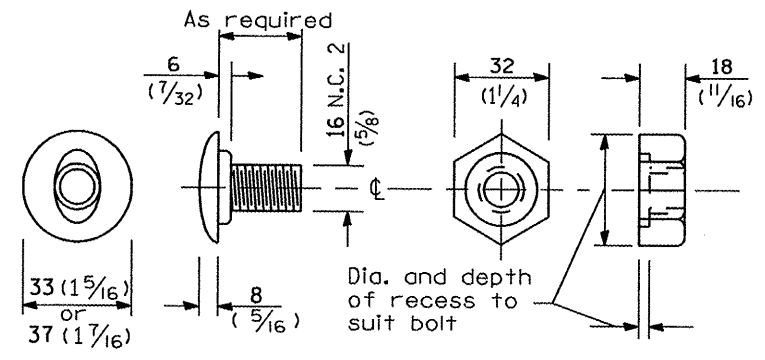
**STEEL BLOCK-OUT DETAIL**



NOTE

Plate A shall be placed between rail element and block-out at non-splice mounting points only when steel block-outs are used.

**PLATE A**



**POST OR SPLICE BOLT & NUT**

**REMOVE AND REERECT  
STEEL PLATE BEAM GUARDRAIL**  
(Sheet 2 of 4)  
**DETAIL**

48