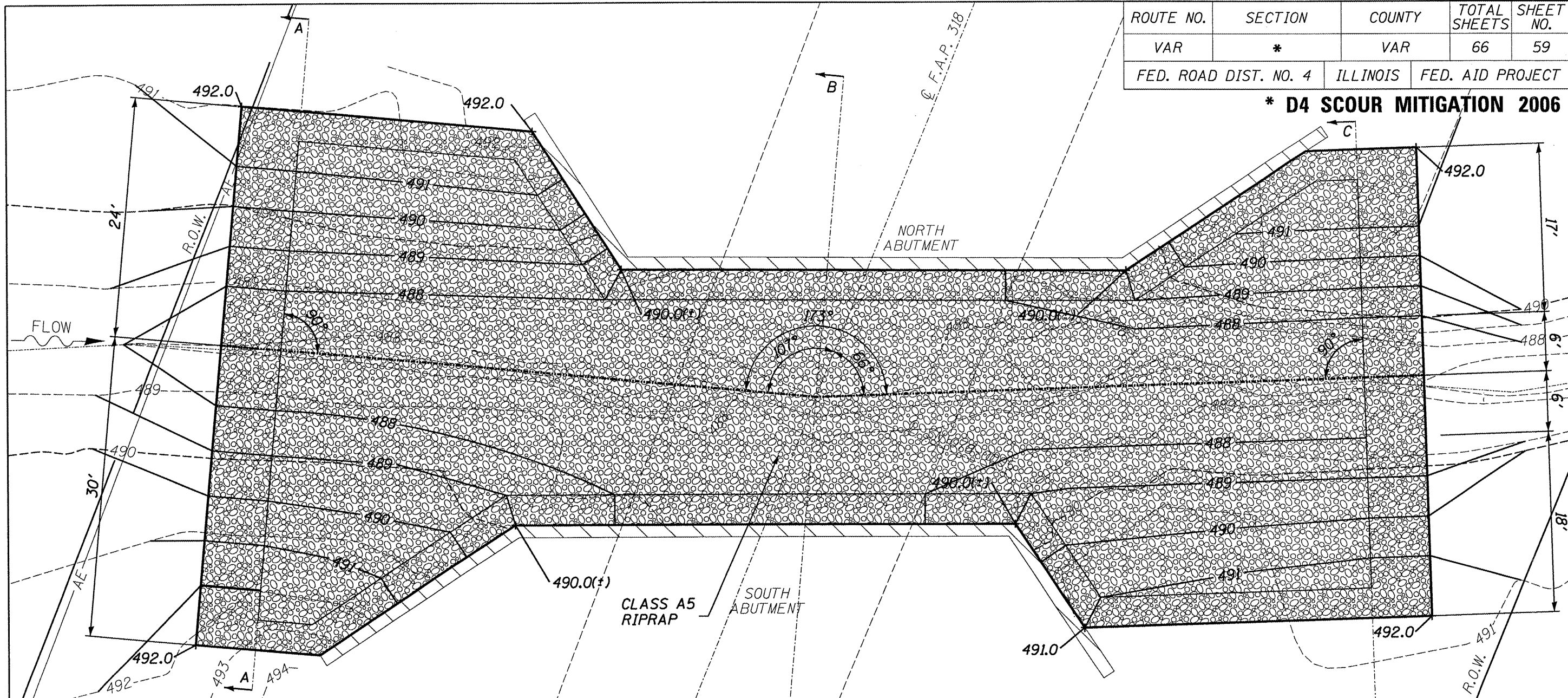


ROUTE NO.	SECTION	COUNTY	TOTAL SHEETS	SHEET NO.
VAR	*	VAR	66	59
FED. ROAD DIST. NO. 4		ILLINOIS	FED. AID PROJECT	

*** D4 SCOUR MITIGATION 2006**

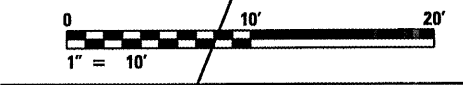


LEGEND

- R.O.W. ———
- EXISTING CONTOUR - - - - 475 - - - -
- PROPOSED CONTOUR ——— 475 ———
- CONCRETE ABUTMENT // // // //
- STREAM CENTERLINE - - - - -
- RIPRAP [Pattern]
- AERIAL ELECTRIC ——— AE ———

GENERAL NOTES:

1. STREAMBED IS TYPICALLY DRY.
IF WATER IS PRESENT DURING
CONSTRUCTION, METHOD OF DEWATERING
IS AT THE DISCRETION OF THE CONTRACTOR



ILLINOIS DEPARTMENT OF TRANSPORTATION
PROPOSED SITE PLAN
 S.N. 078-0005
 F.A.P. 318 (IL 29)
 OVER ILL. RIVER TRIBUTARY
 PUTNAM COUNTY
 SHEET 3 OF 7