

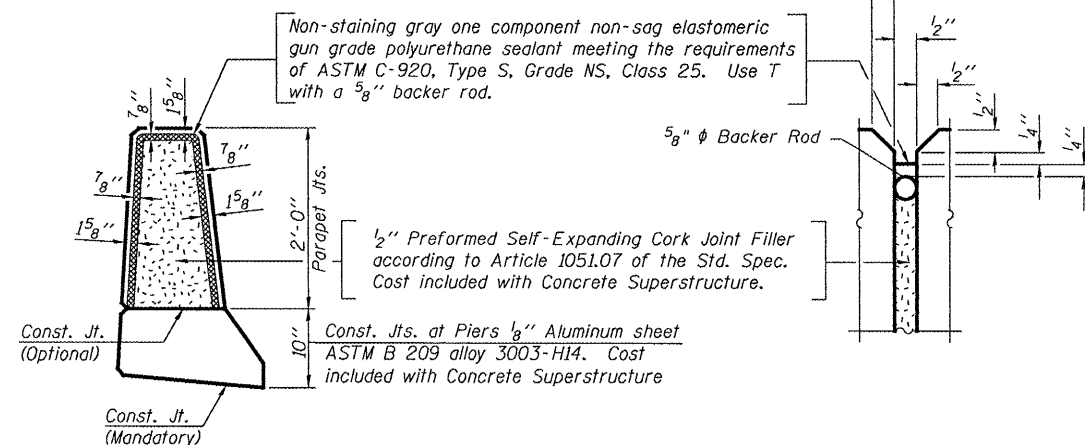
STATE OF ILLINOIS  
DEPARTMENT OF TRANSPORTATION

ROUTE NO.	SECTION	COUNTY	SHEET NO.	SHEET NO.
F.A.P. 313	(21-HB-11)	KNOX	55	36
FED. ROAD DIST. NO. 7	ILLINOIS	FED. AID PROJECT		

Contract #68216

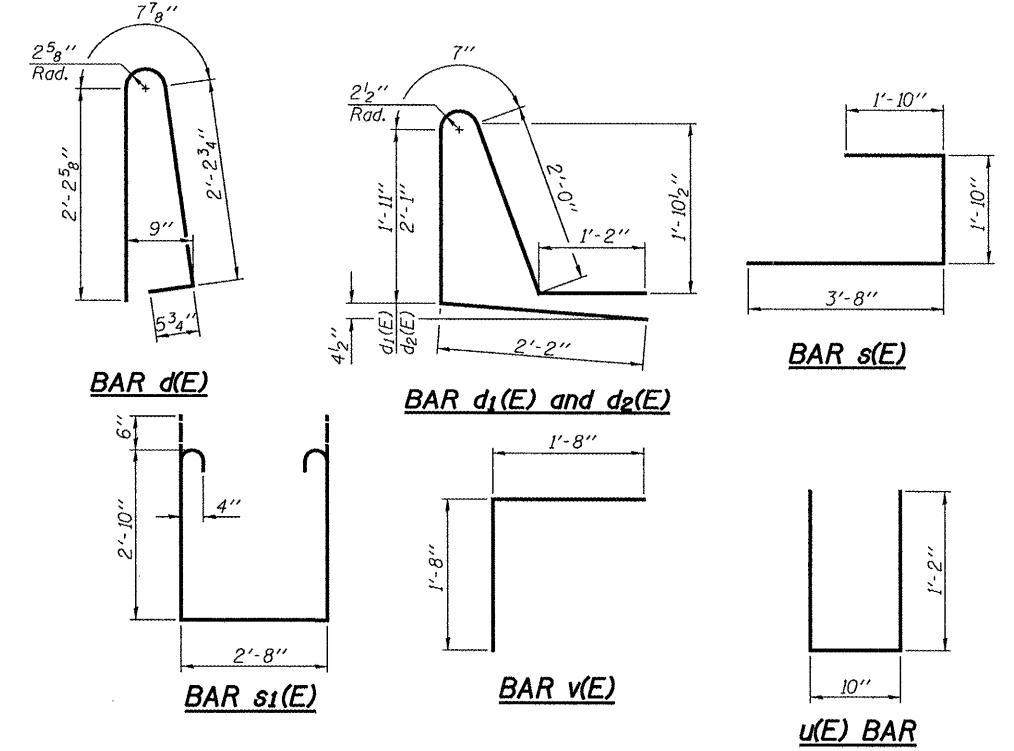
TWO SUPERSTRUCTURES  
BILL OF MATERIAL

Bar	No.	Size	Length	Shape
a(E)	1376	#5	18'-8"	
a <sub>1</sub> (E)	570	#5	18'-5"	
a <sub>2</sub> (E)	712	#6	6'-0"	
a <sub>3</sub> (E)	40	#5	30'-9"	
a <sub>4</sub> (E)	48	#5	31'-0"	
a <sub>5</sub> (E)	32	#5	2'-0"	
a <sub>6</sub> (E)	8	#5	21'-1"	
a <sub>7</sub> (E)	4	#5	35'-11"	
a <sub>8</sub> (E)	4	#5	39'-2"	
a <sub>9</sub> (E)	664	#5	18'-1"	
a <sub>10</sub> (E)	532	#5	21'-3"	
a <sub>11</sub> (E)	532	#5	16'-8"	
a <sub>12</sub> (E)	54	#5	33'-10"	
a <sub>13</sub> (E)	44	#5	33'-7"	
b(E)	1044	#5	28'-0"	
b <sub>1</sub> (E)	216	#6	33'-7"	
b <sub>2</sub> (E)	832	#5	31'-3"	
b <sub>3</sub> (E)	108	#6	39'-3"	
d(E)	1040	#5	5'-7"	
d <sub>1</sub> (E)	526	#5	7'-10"	
d <sub>2</sub> (E)	522	#5	8'-0"	
e(E)	84	#4	18'-10"	
e <sub>1</sub> (E)	84	#4	18'-1"	
e <sub>2</sub> (E)	84	#4	17'-6"	
e <sub>3</sub> (E)	64	#4	10'-1"	
e <sub>4</sub> (E)	128	#4	8'-0"	
e <sub>5</sub> (E)	28	#4	19'-1"	
e <sub>6</sub> (E)	16	#4	19'-9"	
e <sub>7</sub> (E)	8	#4	27'-5"	
e <sub>8</sub> (E)	8	#4	28'-4"	
e <sub>9</sub> (E)	16	#8	20'-10"	
e <sub>10</sub> (E)	16	#8	8'-0"	
e <sub>11</sub> (E)	8	#8	28'-6"	
e <sub>12</sub> (E)	8	#8	10'-1"	
e <sub>13</sub> (E)	8	#8	29'-4"	
m(E)	24	#6	10'-3"	
m <sub>1</sub> (E)	20	#6	21'-0"	
m <sub>2</sub> (E)	12	#6	7'-2"	
m <sub>3</sub> (E)	16	#6	3'-0"	
m <sub>4</sub> (E)	4	#6	4'-2"	
m <sub>5</sub> (E)	10	#6	35'-11"	
m <sub>6</sub> (E)	10	#6	39'-2"	
m <sub>7</sub> (E)	12	#6	9'-9"	
m <sub>8</sub> (E)	4	#6	6'-6"	
m <sub>9</sub> (E)	2	#6	3'-4"	
m <sub>10</sub> (E)	2	#6	6'-8"	
m <sub>11</sub> (E)	8	#6	11'-0"	
m <sub>12</sub> (E)	10	#6	35'-0"	
m <sub>13</sub> (E)	10	#6	38'-3"	
m <sub>14</sub> (E)	20	#6	20'-2"	
m <sub>15</sub> (E)	8	#6	13'-5"	
s(E)	226	#5	7'-4"	
s <sub>1</sub> (E)	198	#4	9'-4"	
u(E)	218	#5	3'-2"	
v(E)	206	#5	3'-4"	
Reinforcement Bars, Epoxy Coated	Pound	190850		
Concrete Superstructure	Cu. Yds.	907.5		

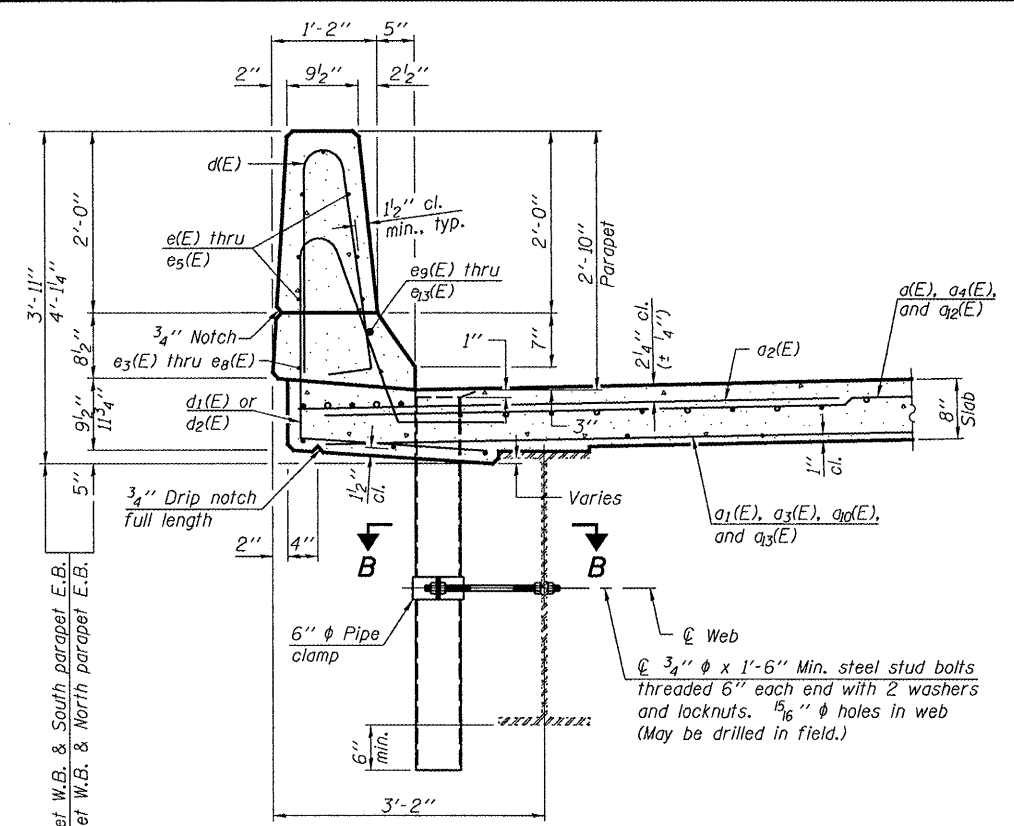


PARAPET JOINT DETAILS

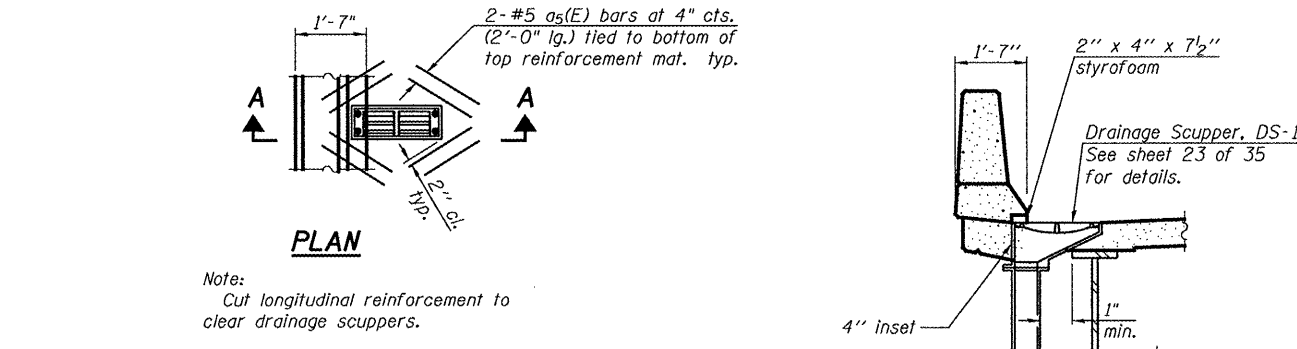
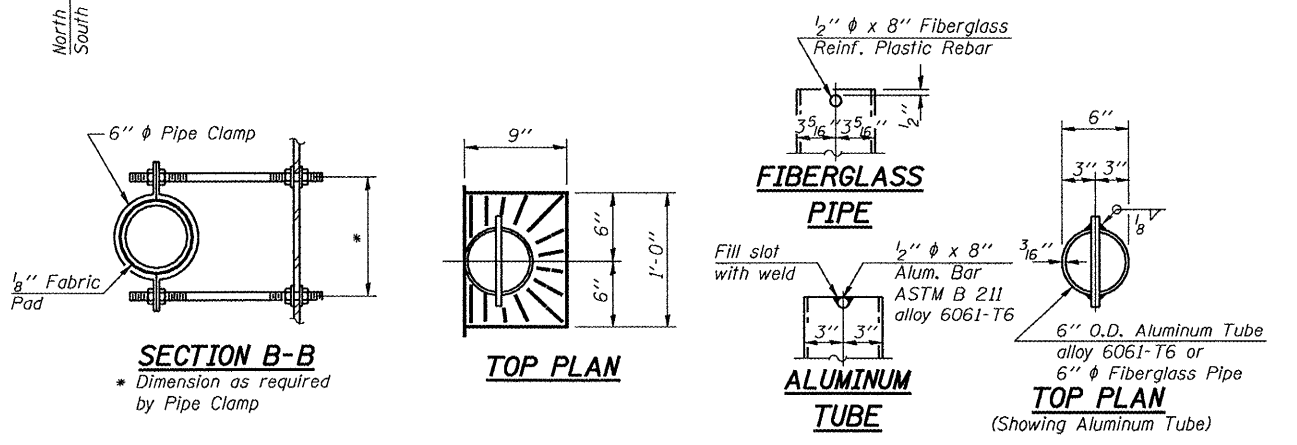
Notes:  
The exterior surfaces of the floor drains shall be painted with the finish coat as specified in the special provisions for Cleaning and Painting Existing Steel Structures. The exterior surfaces of the drains shall be cleaned according to Steel Structures Painting Council's Spec. SSPC-SP1 prior to painting.  
Fiberglass pipe shall conform to ASTM D 2996, with short-time rupture strength hoop tensile stress of 30,000 p.s.i. minimum.



**SUPERSTRUCTURE DETAILS**  
F.A.P. ROUTE 313 - SECTION (21-HB-11)  
KNOX COUNTY  
STA. 495+98.72  
STRUCTURE NO. 048-0021  
STRUCTURE NO. 048-0022



SECTION THRU PARAPET



DESIGNED FT	April 28 2008
CHECKED DPN	EXAMINED <i>Thomas J. Donaghy</i>
DRAWN Gregory D. Farmer	PASSED <i>Ralph E. Anderson</i>
CHECKED FT/DPN	