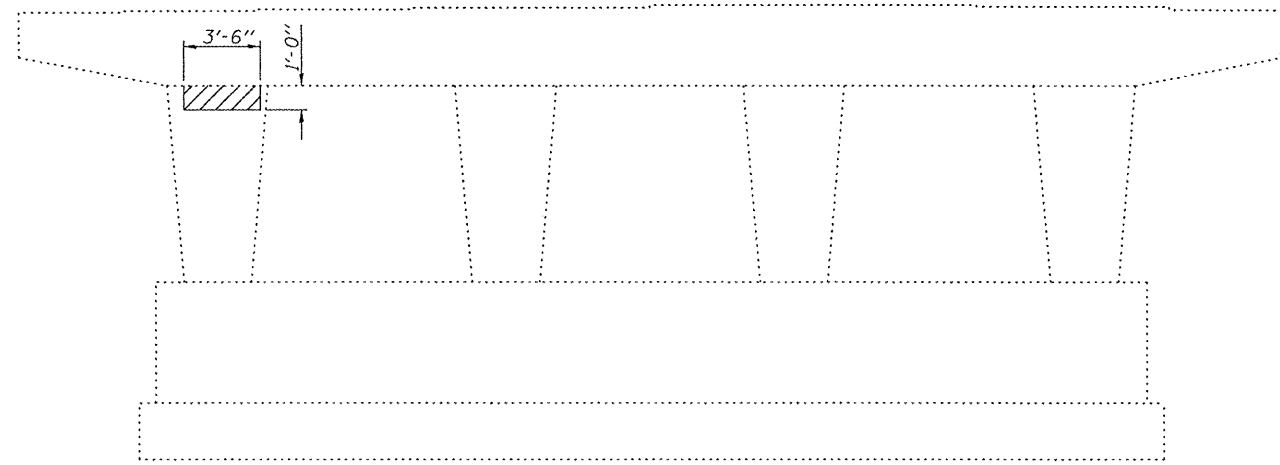


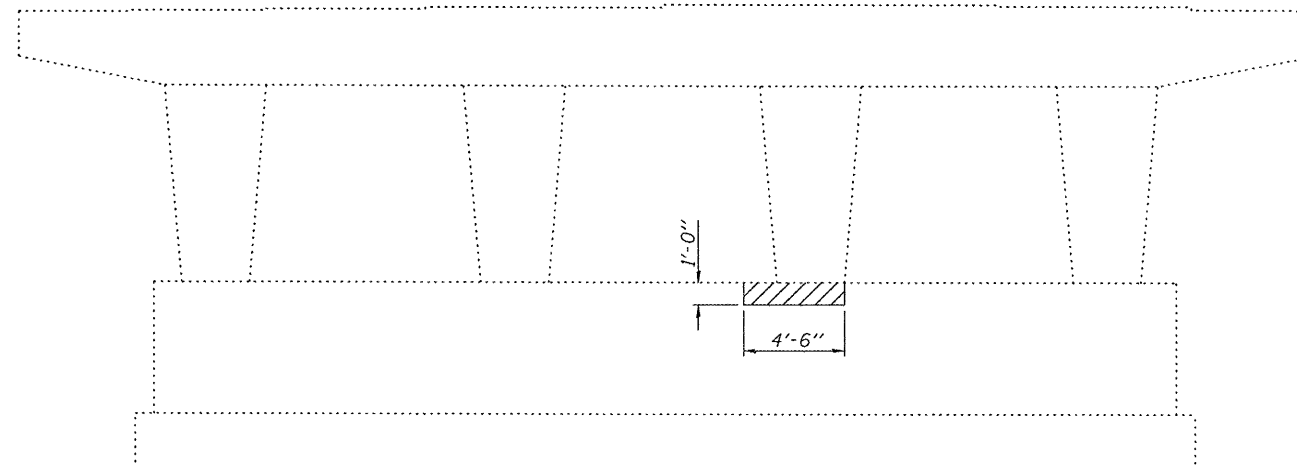
STATE OF ILLINOIS  
DEPARTMENT OF TRANSPORTATION

ROUTE NO.	SECTION	COUNTY	SHEET NO.	SHEET	SHEET NO.
F.A.P. 313	(21-HB-1)	KNOX	55	48	35 SHEETS
FED. ROAD DIST. NO. 7		ILLINOIS	FED. AID PROJECT		

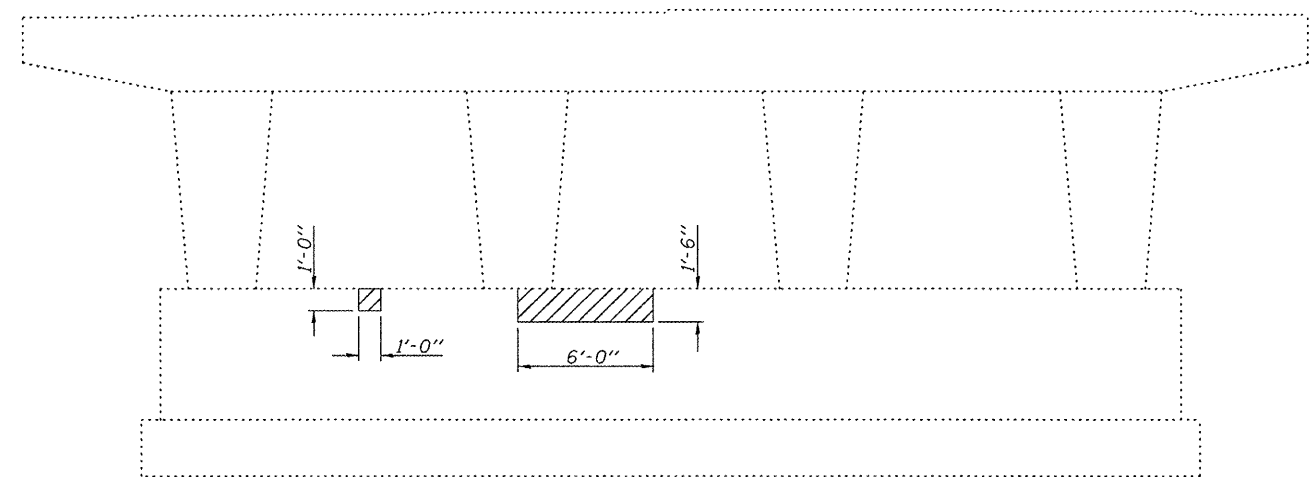
Contract #68216



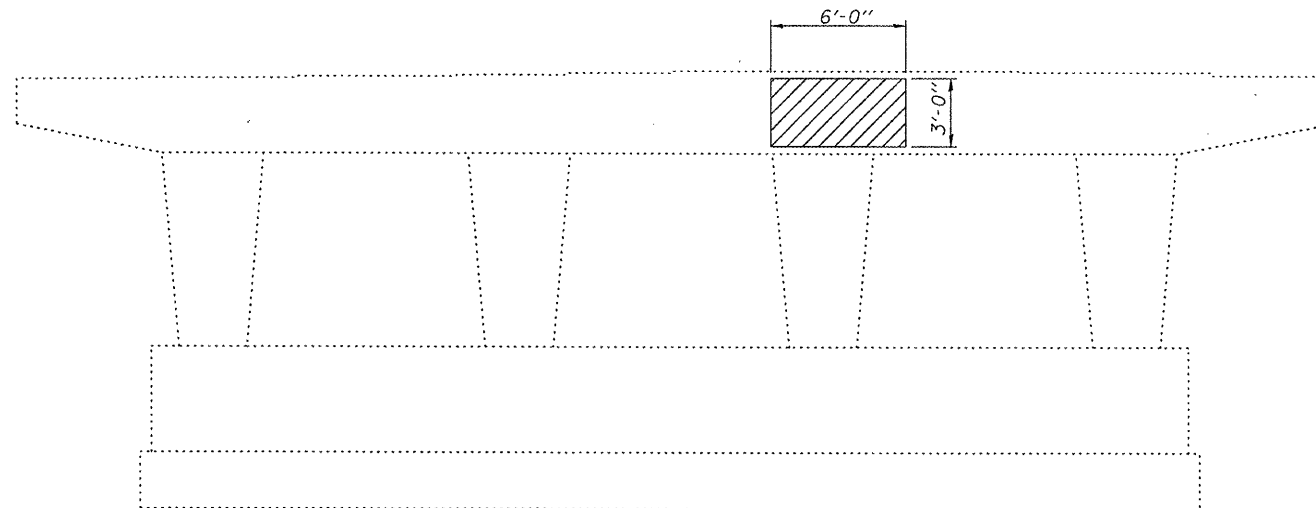
**ELEVATION PIER 1**  
(Looking East)



**ELEVATION PIER 2**  
(Looking West)

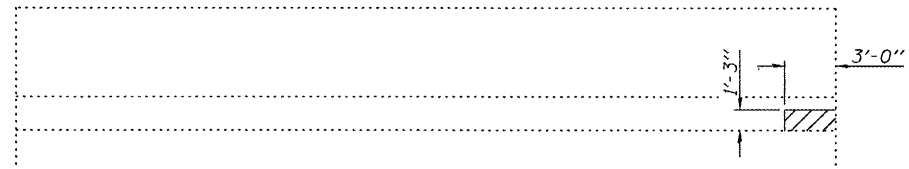


**ELEVATION PIER 2**  
(Looking East)



**ELEVATION PIER 3**  
(Looking East)

Note:  
Concrete Sealer shall be applied to the exposed area of existing concrete surface above existing ground line or slopewalls.  
Hatched area indicates Structural Repair of Concrete (Depth equal to or less than 5")



**ELEVATION WEST ABUT.**  
(Looking West)

**BILL OF MATERIAL**

Item	Unit	Total
Structural Repair of Concrete (Depth equal to or less than 5")	Sq. Ft.	40.0
Concrete Sealer	Sq. Ft.	4224

**CONCRETE REPAIR (W.B.)**  
**F.A.P. ROUTE 313 - SECTION (21-HB-1)**  
**KNOX COUNTY**  
**STA. 495+98.72**  
**STRUCTURE NO. 048-0021 (W.B.)**  
**STRUCTURE NO. 048-0022 (E.B.)**

DESIGNED	FT
CHECKED	DPN
DRAWN	Gregory D. Farmer
CHECKED	FT/DPN

April 28 2008  
EXAMINED *Thomas J. Demagali*  
ENGINEER OF BRIDGE DESIGN  
PASSED *Ralph E. Anderson*  
ENGINEER OF BRIDGES AND STRUCTURES