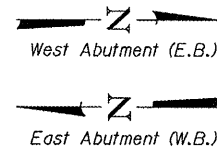
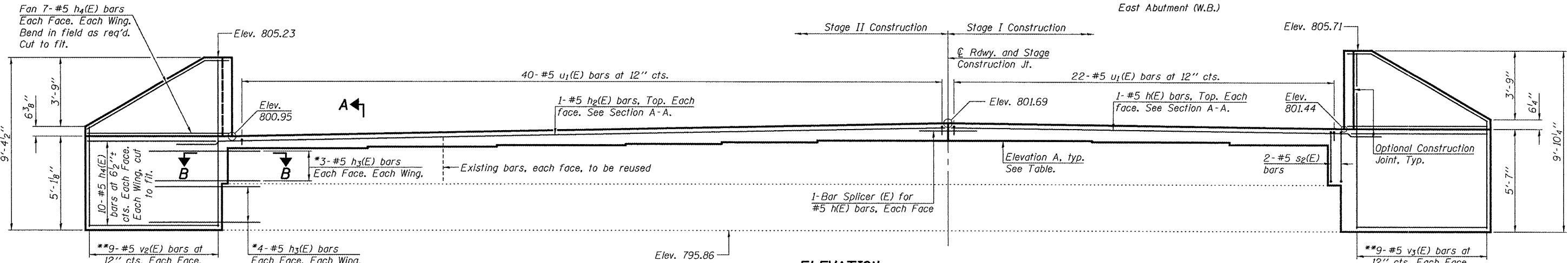


STATE OF ILLINOIS
DEPARTMENT OF TRANSPORTATION



ROUTE NO. F.A.P. 313	SECTION (21-HB-1)I	COUNTY KNOX	SHEET 55	SET 49	SHEET NO. 32 35 SHEETS
FED. ROAD DIST. NO. 7		ILLINOIS	FED. AID PROJECT		

Contract #68216



*Epoxy Grout h3(E) bars in 9" min. drilled holes according to Article 584 of the Standard Specifications. Cost included with Reinforcement Bars, Epoxy Coated.
**See Field Cutting Diagram

MIN. BAR LAP
#5 Bar = 1'-8"

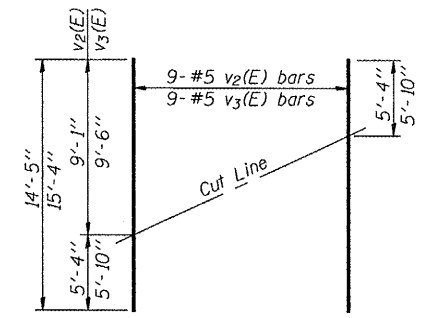
ELEVATION
Looking West at West Abutment (E.B.)
Looking East at East Abutment (W.B.)

ELEVATION A

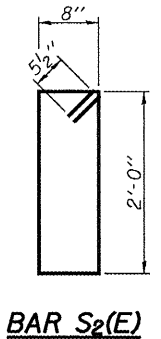
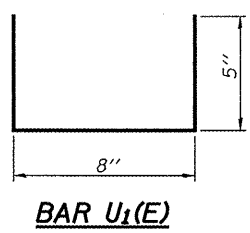
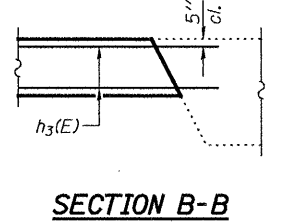
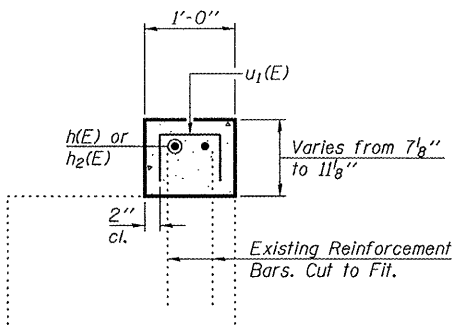
Location	Elevation
Beams 1 & 18	800.36
Beams 2 & 17	800.45
Beams 3 & 16	800.54
Beams 4 & 15	800.59
Beams 5 & 14	800.68
Beams 6 & 13	800.76
Beams 7 & 12	800.76
Beams 8 & 11	800.72
Beams 9 & 10	800.57

BILL OF MATERIAL

Bar	No.	Size	Length	Shape
h(E)	4	#5	23'-8"	
h2(E)	4	#5	41'-9"	
h3(E)	56	#5	2'-11"	
h4(E)	136	#5	9'-7"	
s2(E)	4	#5	6'-3"	
u1(E)	124	#5	1'-6"	
v2(E)	18	#5	14'-5"	
v3(E)	18	#5	15'-4"	
Concrete Sealer		Sq. Ft.	146	
Structure Excavation		Cu. Yd.	218.9	
Concrete Structures		Cu. Yd.	14.2	
Reinforcement Bars, Epoxy Coated		Pound	2580	



FIELD CUTTING DIAGRAM
Order v2(E) and v3(E) bars full length. Cut as shown and use remainder of bars in opposite face.



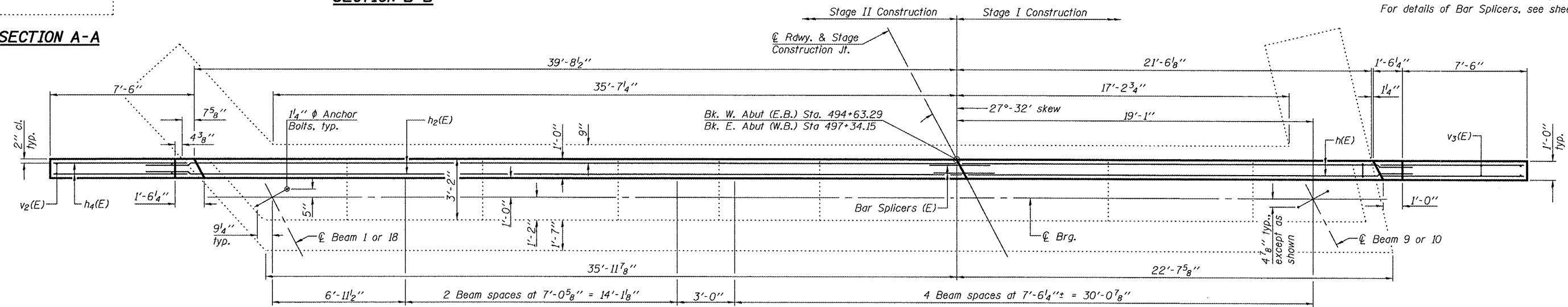
SECTION A-A

SECTION B-B

BAR U1(E)

BAR S2(E)

For details of Bar Splicers, see sheet 34 of 35.



PLAN

Note:
Concrete Sealer shall be applied to the exposed area of existing concrete surface above the top of sloped wall or existing ground line.
Existing anchor bolts at each bearing location shall be cut off, ground flush and sealed with epoxy. Cost included with Concrete Removal.
Beams 1 thru 9 are at W.B. structure. Beams 10 thru 18 are at E.B. structure

DESIGNED FT
CHECKED DPN
DRAWN Gregory D. Farmer
CHECKED FT/DPN

April 28 2008
EXAMINED *Thomas J. Demagali*
PASSED *Ralph C. Anderson*
ENGINEER OF BRIDGES AND STRUCTURES

WEST ABUTMENT (E.B.) AND EAST ABUTMENT (W.B.)
F.A.P. ROUTE 313 - SECTION (21-HB-1)I
KNOX COUNTY
STA. 495+98.72
STRUCTURE NO. 048-0021 (W.B.)
STRUCTURE NO. 048-0022 (E.B.)