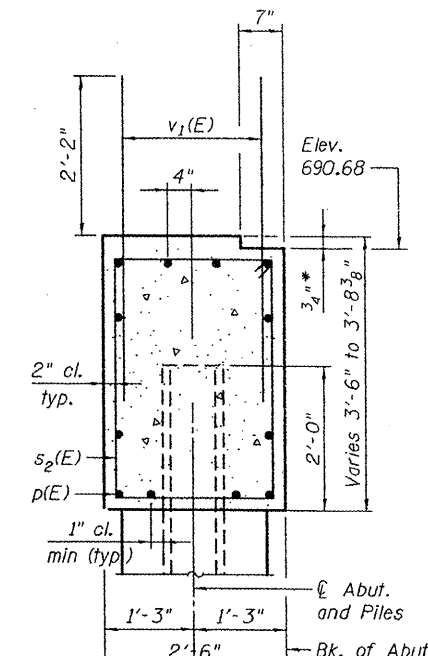
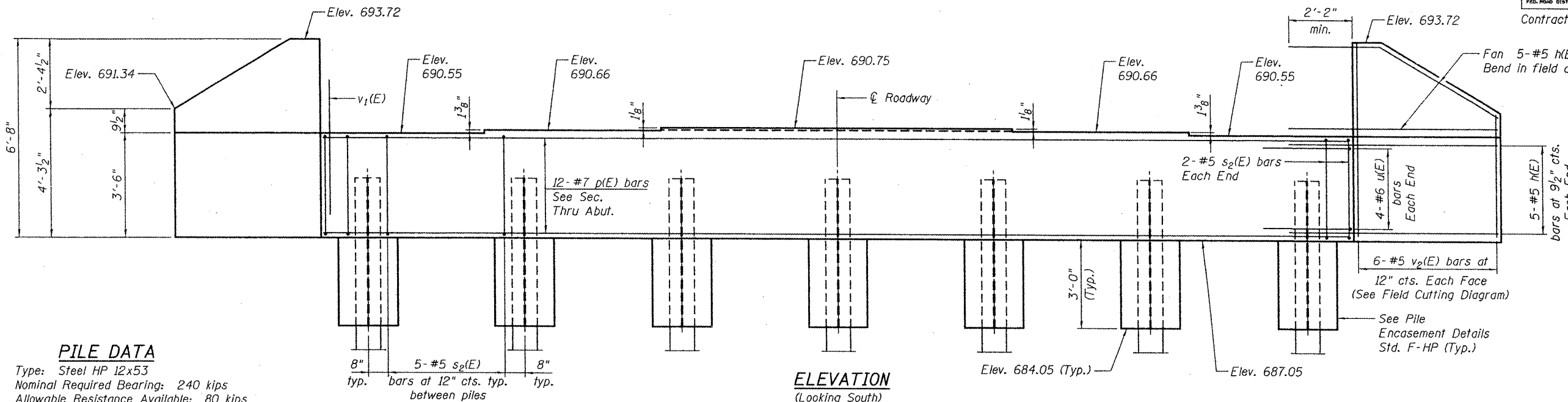


Notes: Four steps monolithically with cap.
 Space reinforcement in cap to miss anchor bolts.
 For anchor bolt installation details see sheet 10 of 19.

STATE OF ILLINOIS
 DEPARTMENT OF TRANSPORTATION

ROUTE NO.	SECTION	COUNTY	STATION	SHEET	SHEET NO. 11 19 SHEETS
FAS 1360	65-BR	WOODFORD	39	24	
FED. ROAD DIST. NO. 7		ILLINOIS	FED. AID PROJECT		Contract # 68530

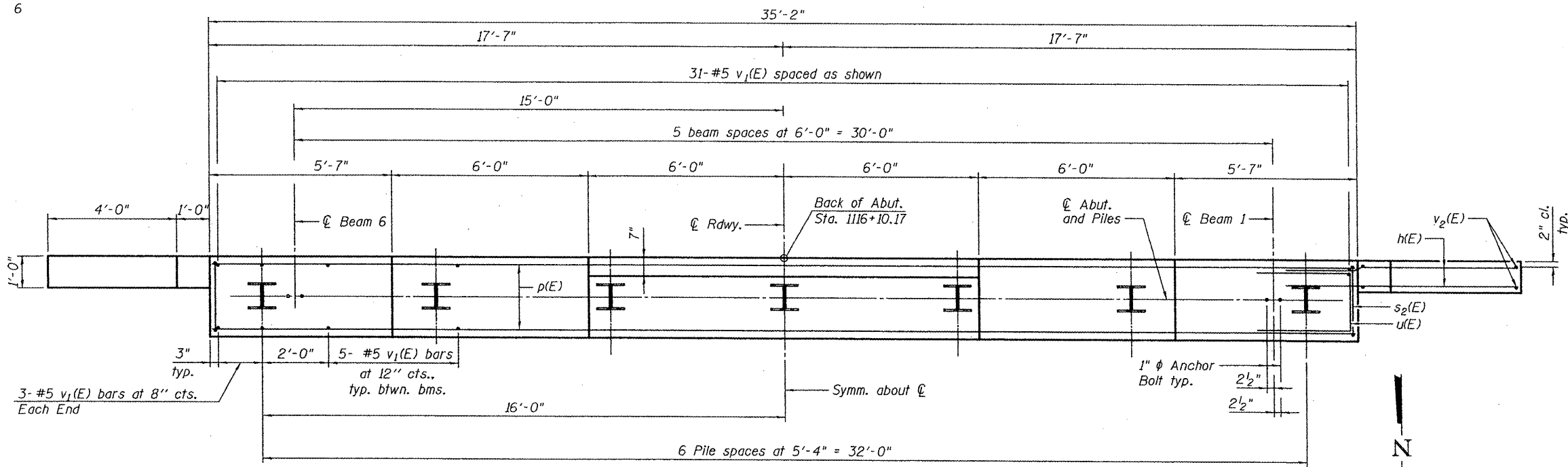


SEC. THRU ABUT.
 (*Beam Seats 3 and 4 only)

PILE DATA

Type: Steel HP 12x53
 Nominal Required Bearing: 240 kips
 Allowable Resistance Available: 80 kips
 Est. Length: 51 ft.
 No. Production Piles: 6
 No. Test Piles: 1

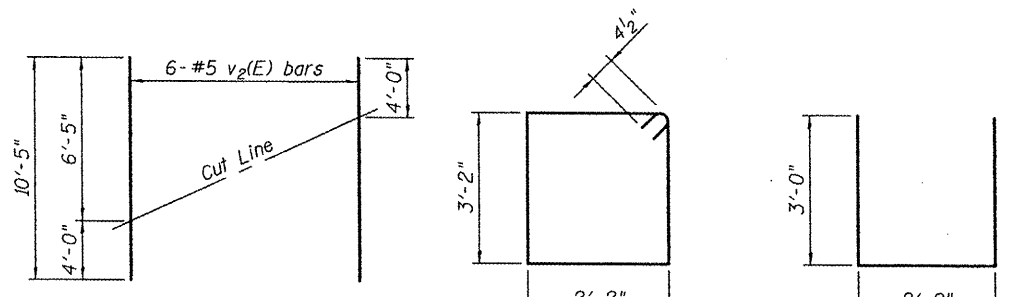
ELEVATION
 (Looking South)



PLAN

BILL OF MATERIAL

Bar	No.	Size	Length	Shape
h(E)	40	#5	7'-0"	—
p(E)	12	#7	34'-10"	—
s2(E)	34	#5	11'-5"	□
u(E)	8	#6	8'-0"	—
v1(E)	62	#5	4'-4"	—
v2(E)	12	#5	10'-5"	—
Concrete Structures	Cu. Yd.		13.8	
Reinforcement Bars, Epoxy Coated	Pound		2,060	
Structure Excavation	Cu. Yd.		84.9	
Furnishing Steel Piles HP 12x53	Foot		306	
Driving Piles	Foot		306	
Test Pile Steel HP 12x53	Each		1	
Concrete Encasement	Cu. Yd.		2.4	



FIELD CUTTING DIAGRAM
 Order v2(E) full length. Cut as shown and use remainder of bars in opposite face.

DESIGNED	CTW
CHECKED	CDL
DRAWN	DP
CHECKED	CTW

SOUTH ABUTMENT
 F.A.S. ROUTE 1360 SEC. 65-BR
 IL ROUTE 251 OVER PANTHER CREEK
 WOODFORD COUNTY
 STATION 1116+87.00
 STRUCTURE NO. 102-0081

EFK-Moen, LLC
 Civil Engineering Design